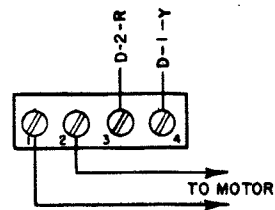
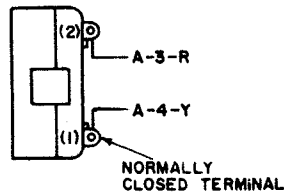


- NOTES**
- POWER CIRCUITS WIRED FOR 115 V AC OR DC OPERATION.
  - WIRE COLOR CODE:  
 BK - BLACK      P - PURPLE  
 BR - BROWN     G - GREEN  
 BL - BLUE       Y - YELLOW  
 W - WHITE       O - ORANGE  
 R - RED          S - SLATE
  - CONNECTORS VIEWED FROM SOLDER TERMINAL ENDS.
  - LK53 EMPLOYS NEGATIVE VOLTAGE FOR MARKING CONTACT. UPPER R.F. FILTER IS CONNECTED TO MARKING CONTACT. LOWER R.F. FILTER IS CONNECTED TO SPACING CONTACT.
  - POLARITY MUST BE MAINTAINED ONLY WHEN 174422 FILTER IS USED. POLARITY MAY BE DISREGARDED WHEN 174421 FILTER IS USED. COLOR CODING OF FILTER LEADS DOES NOT APPLY TO 174421 FILTER.
  - WIRING LEGEND:  
 ——— DISTANT TERMINATING AREA  
 ——— DISTANT TERMINATING DESIGNATION  
 ——— WIRE COLOR CODE  
 D-2-R

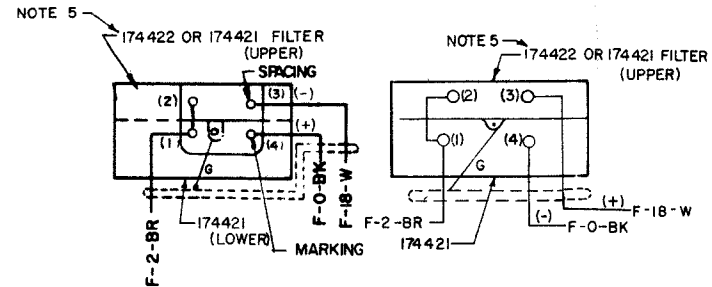
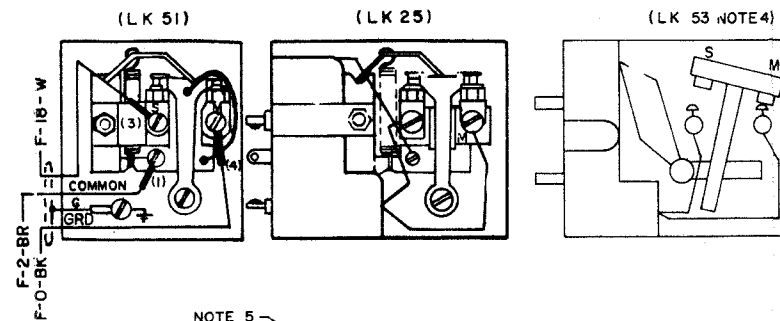
**A**  
MOTOR TERMINAL BLOCK



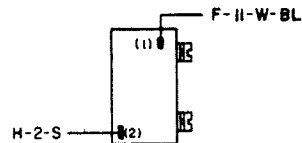
**D**  
MARGIN INDICATOR SWITCH



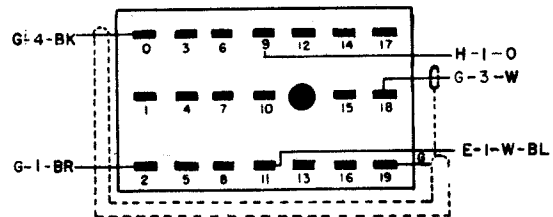
**G**  
CONTACT BOX ASSEMBLIES



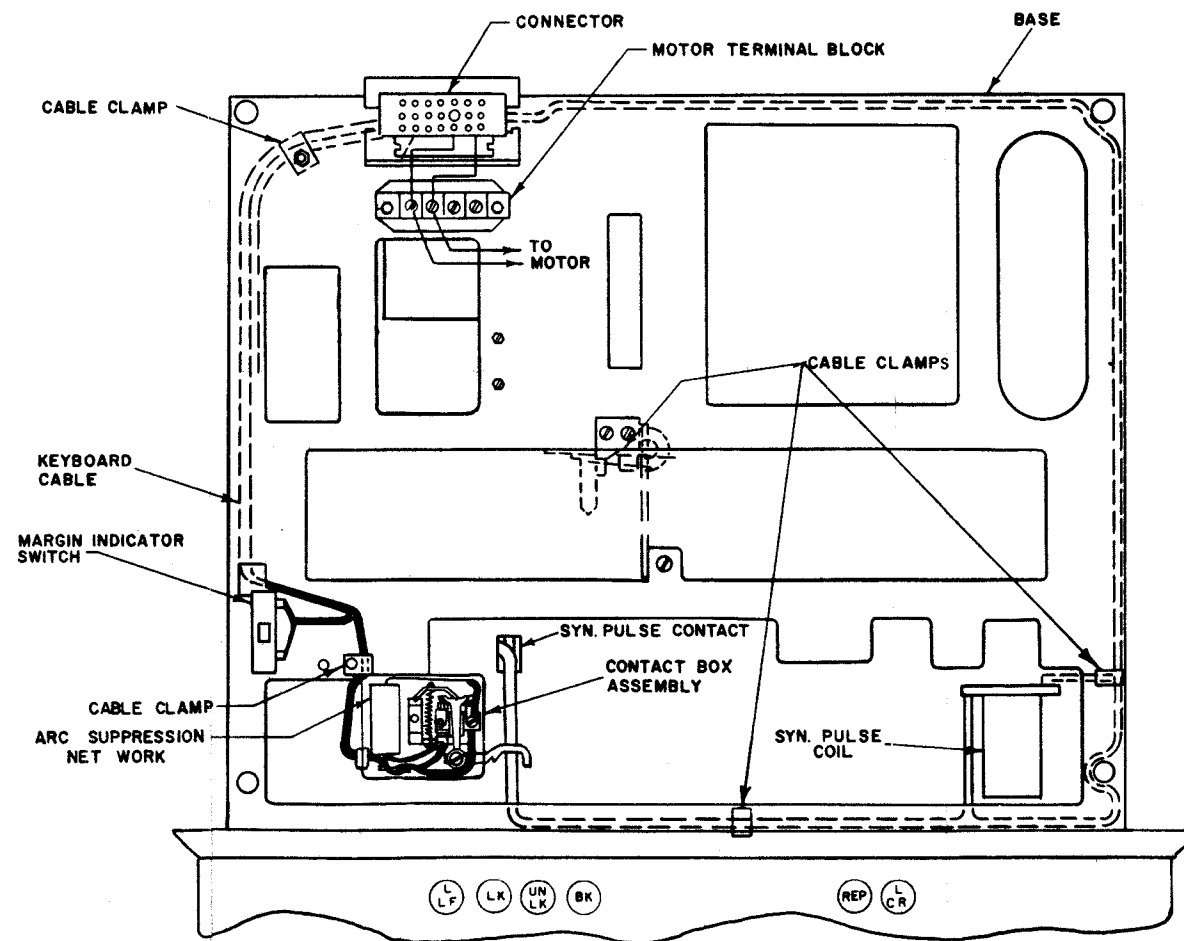
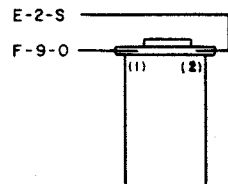
**E**  
SYN. PULSE TRANS. CONTACT



**F**  
KEYBOARD CONNECTOR



**H**  
SYN. PULSE TRANS. COIL



**CABLE ROUTING**  
TOP VIEW

4262 WD

REVISIONS

ISSUE	DATE	AUTH. NO.
2	9-24-60	CC-94
3	11-18-60	CE-182
4	11-23-62	75190
5	4-16-64	79225-7
6	9-8-64	79225-10
7	4-1-65	79225-13
8	9-15-66	91295-RC

ACTUAL  
WIRING DIAGRAM  
FOR  
MODEL 28  
KEYBOARD  
LK25  
LK51  
LK53

APPROVALS

D AND R	E OF M
---	---

E-NUMBER

PROD. NO. 4262WD

DATE 6-8-60

P.D. FILE NO. 18-A65/2.219A

DRAWN P.K.

CHKD.

ENGD. D.C.L.

APPD.

TELETYPE  
CORPORATION

4262 WD