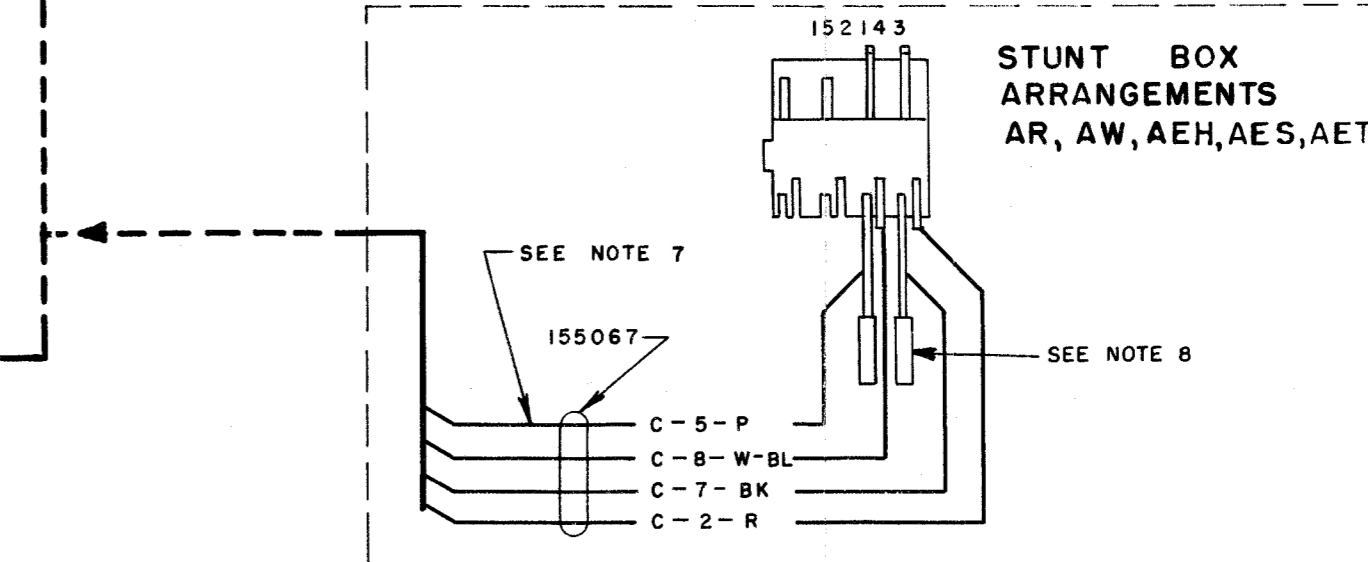
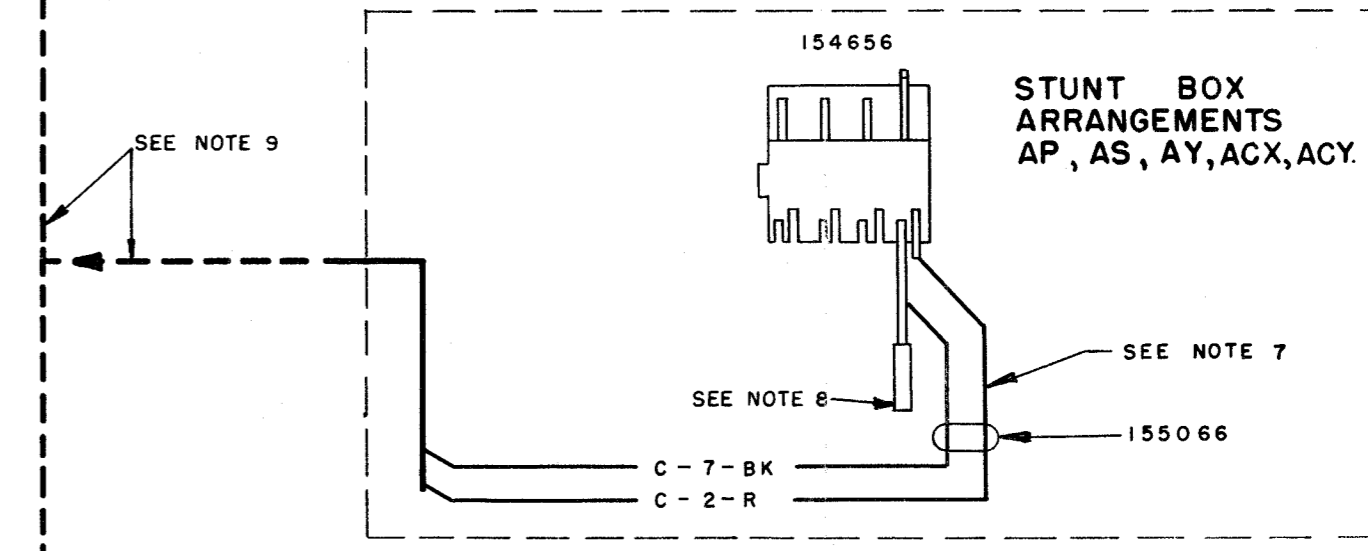
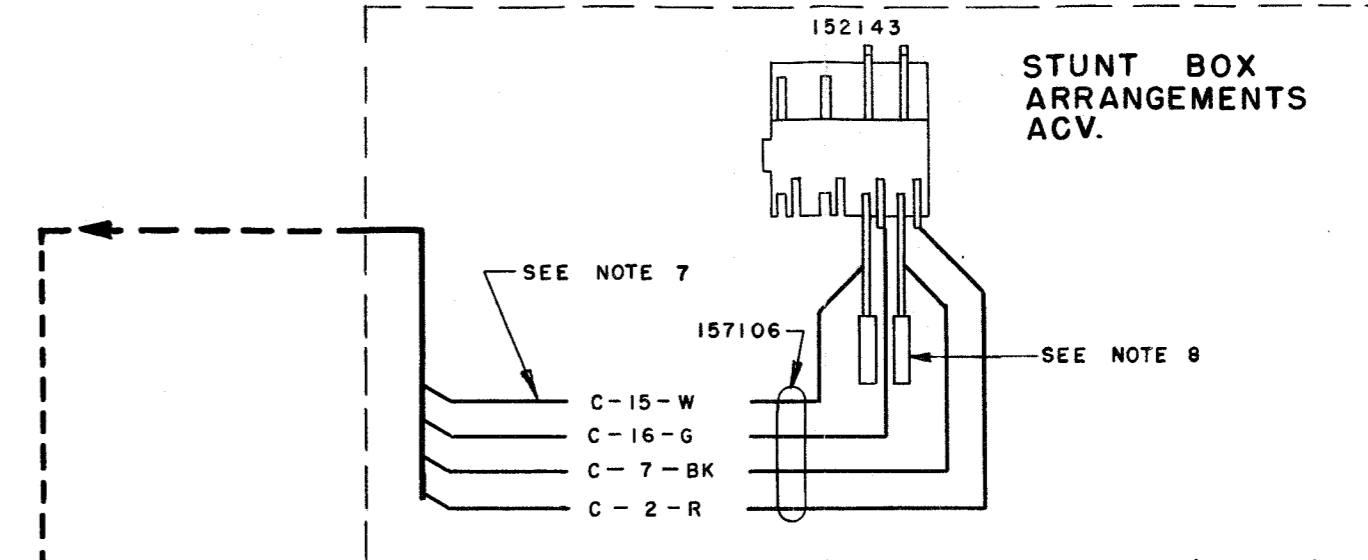
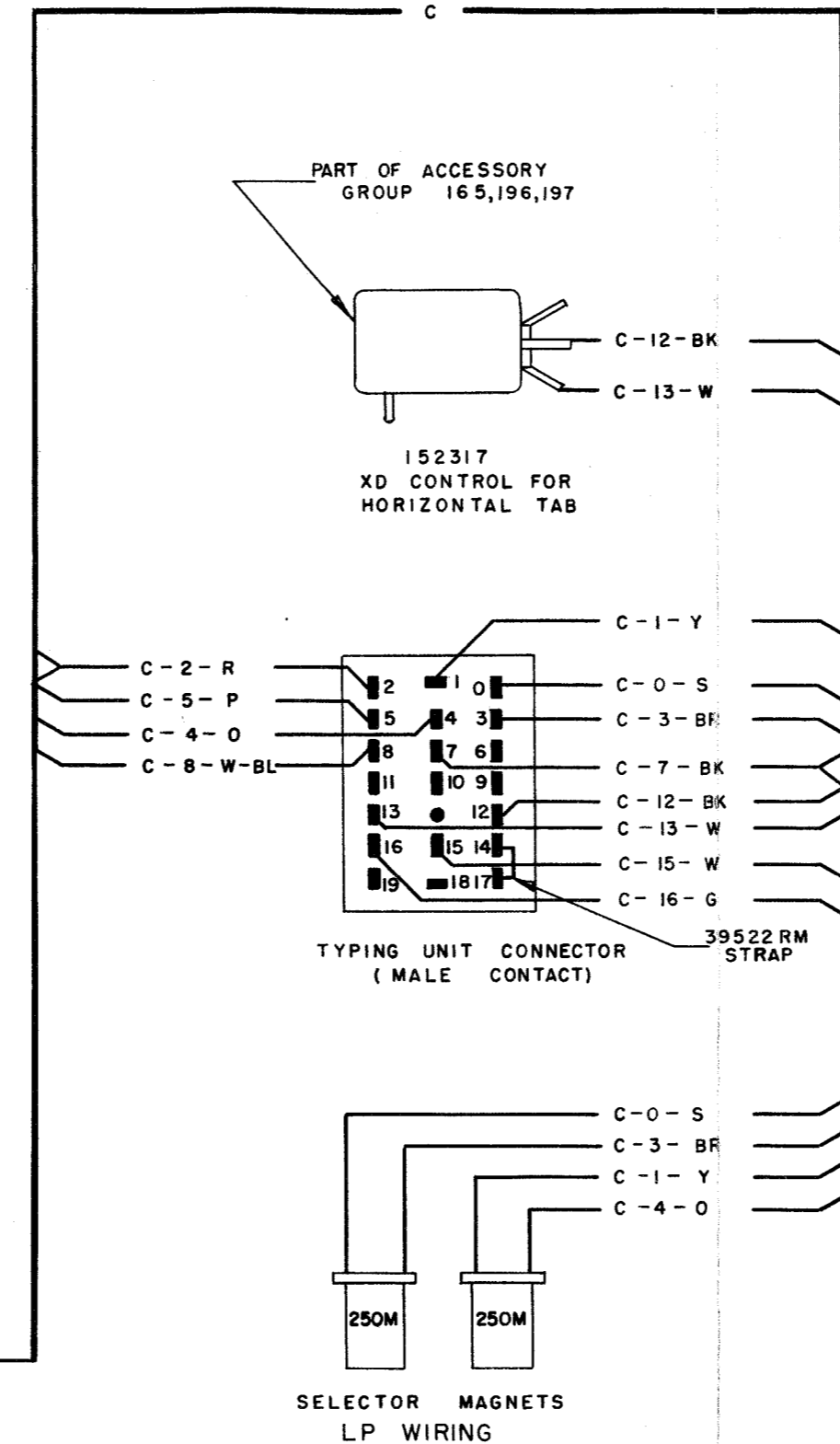
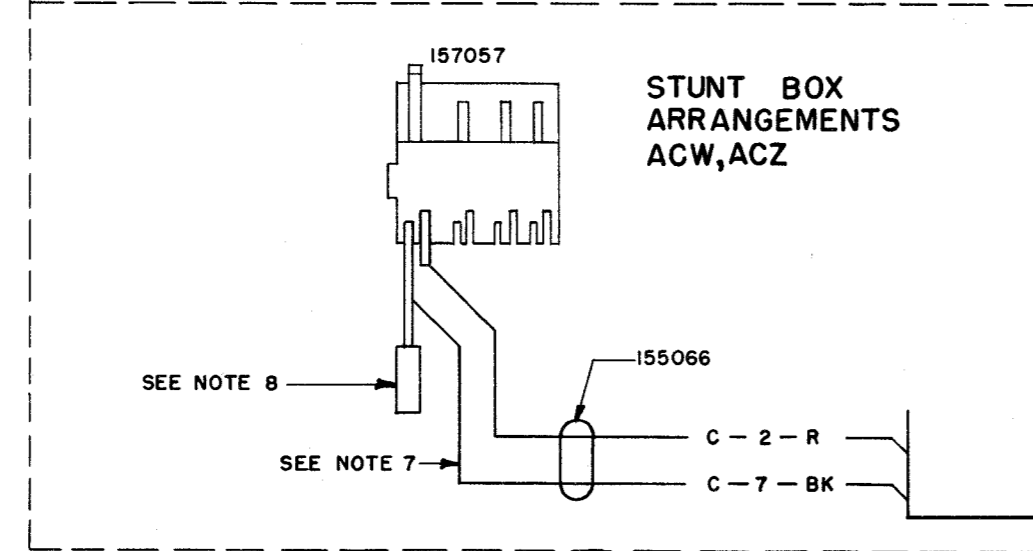
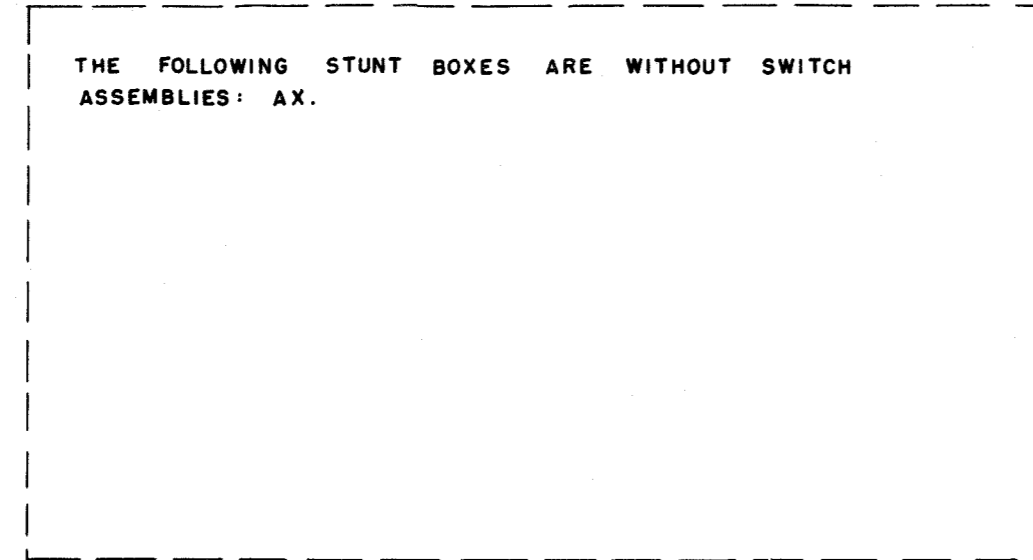


2901WD		
REVISIONS		
ISSUE	DATE	AUTH. NO.
A	5-20-55	28-5420
B	6-15-55	28-5486
C	8-24-55	28-5615
D	2-28-56	28-6309
E	9-20-56	28-6926
F	10-11-56	28-7020

- NO. NOTES**
1. WIRING CHANNEL DESIGNATED BY "C" DOES NOT REPRESENT CABLES, BUT ASSISTS IN TRACING CONNECTIONS.
 2. CHANNEL LEGEND
 3. COLOR CODE:
 BK - BLACK BL - BLUE
 W - WHITE R - RED
 Y - YELLOW BR - BROWN
 P - PURPLE O - ORANGE
 S - SLATE G - GREEN
 W-BL - WHITE BLUE W-BK - WHITE BLACK
 4. POWER CIRCUITS WIRED FOR 115V-60~A.C. OR 115V D.C. OPERATION, SEE NOTE 6.
 5. CONNECTOR VIEWED FROM SOLDERED TERMINAL ENDS.
 6. ASSOCIATED LESU MUST BE EQUIPPED WITH AC-DC CONVERSION ASSEMBLY FOR D.C. OPERATION OF SIGNAL BELL CONTACTS. USE 152021 FOR LESU 5 OR 152624 FOR LESU 7.
 7. THESE LEADS FURNISHED WITH FUNCTION BOX.
 - 8.
 9. A COMPLETE LP UNIT USES ONLY ONE STUNT BOX. MAKE APPROPRIATE (---) CONNECTIONS TO COMPLETE CIRCUIT.



STUNT BOX WIRING

ACTUAL WIRING DIAGRAM FOR MODEL 28

TYPING UNITS LP6 & LP9 AND STUNT BOXES AP, AR, AS, AW, AX, AY, ACV, ACW, ACX, ACY, ACZ, AEH, AES, AET

DATE: 4-12-55

P.D. FILE NO. 1:30:65-126A

DRAWN ADW CHKD. *[Signature]*

ENG'D. A.Z.P. APP'D. *[Signature]*

TELETYPE CORPORATION

2901WD