

**BELL SYSTEM PRACTICES**  
Teletypewriter and Data Stations

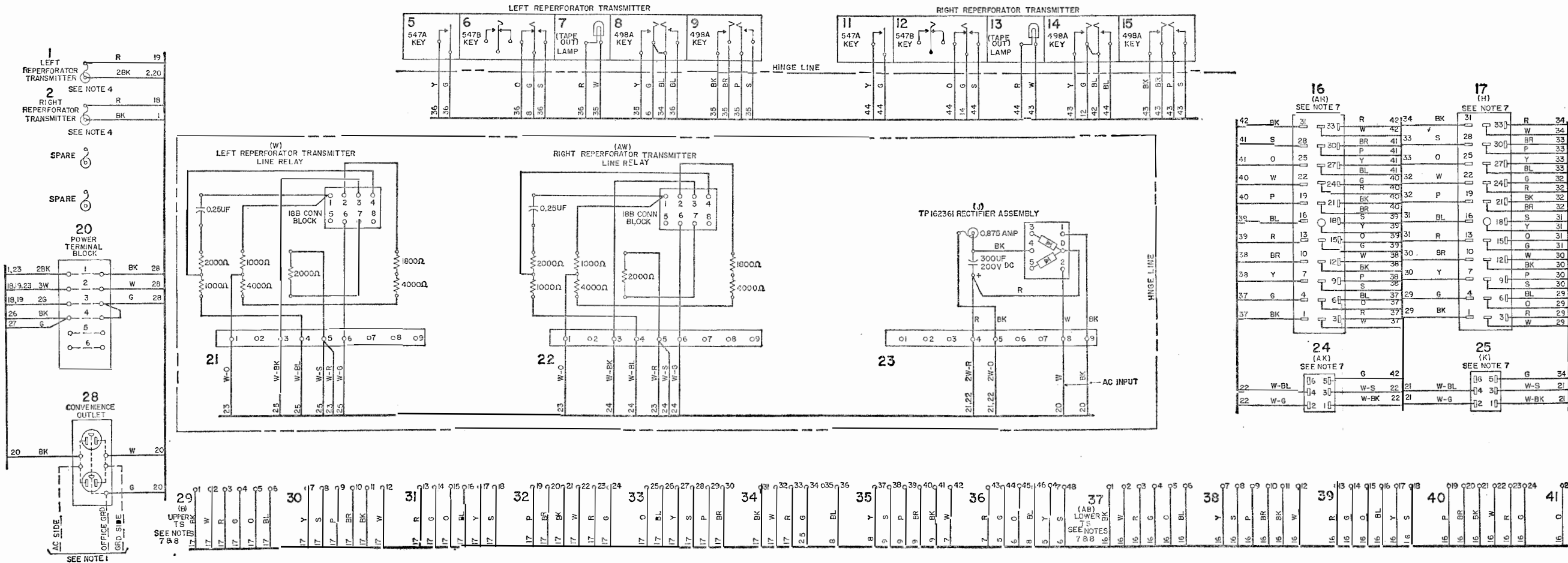
**SECTION P34.323**  
Issue 1, August, 1960  
AT&T Co Standard

## **28 TYPE APPARATUS CABINETS**

### **WIRING DIAGRAM**

#### **1. GENERAL**

- 1.01 This section shows the wiring of the 28B apparatus cabinet which is used in the 81D1 switching system.



28B Apparatus Cabinet

NOTES:

- UNIT WIRED FOR 115 VOLTS 50 TO 60 CYCLE AC POWER INPUT ONLY.
- CONNECTORS VIEWED FROM SOLDER TERMINAL ENDS.
- WIRES NOT MARKED ARE SURFACE WIRING.
- FUSE PROTECTION FOR REPERFORATOR TRANSMITTERS RATED AT 4 AMP.
- EXTERNAL SIGNAL LINE CONNECTIONS MADE TO RIGHT SIDE OF 120 POINT TERMINAL BLOCK AS FOLLOWS:  
LEFT REPERFORATOR TRANSMITTER B-1 AND B-2  
RIGHT REPERFORATOR TRANSMITTER AB-1 AND AB-2

- CIRCUIT SHOWN FOR .06 AMP SELECTOR MAGNET OPERATION AND .02 AMP SIGNAL LINE OPERATION.

- AS VIEWED FROM THE FRONT OF THE CABINET THE DESIGNATIONS ARE AS FOLLOWS:

RIGHT REPERFORATOR TRANSMITTER	LEFT REPERFORATOR TRANSMITTER
(A) (K) CONN	(K) CONN
(AH) CONN	(H) CONN
(AB) TS (LOWER)	(B) TS (UPPER)

- TERMINAL STRIPS (B) & (AB) HAVE 120 TERMINALS. USE EVERY OTHER ROW STARTING WITH NQ1 AT TOP ROW.

