

BELL SYSTEM PRACTICES
Teletypewriter and Data Stations

SECTION P34.321
Issue 2, July, 1960
AT&TCo Standard

28G AND 28H
TRANSMITTER-DISTRIBUTOR
MOUNTING AND COVER ASSEMBLIES
WIRING DIAGRAM

1. GENERAL

1.01 This section contains the wiring of the 28G and 28H transmitter-distributor mounting and cover assemblies. These are the bases for the self contained 28G multi-contact and 28H single-contact fixed head transmitter-distributor units respectively.

1.02 This section is being reissued to revise the wiring of the 28G transmitter-distributor mounting and cover assembly.

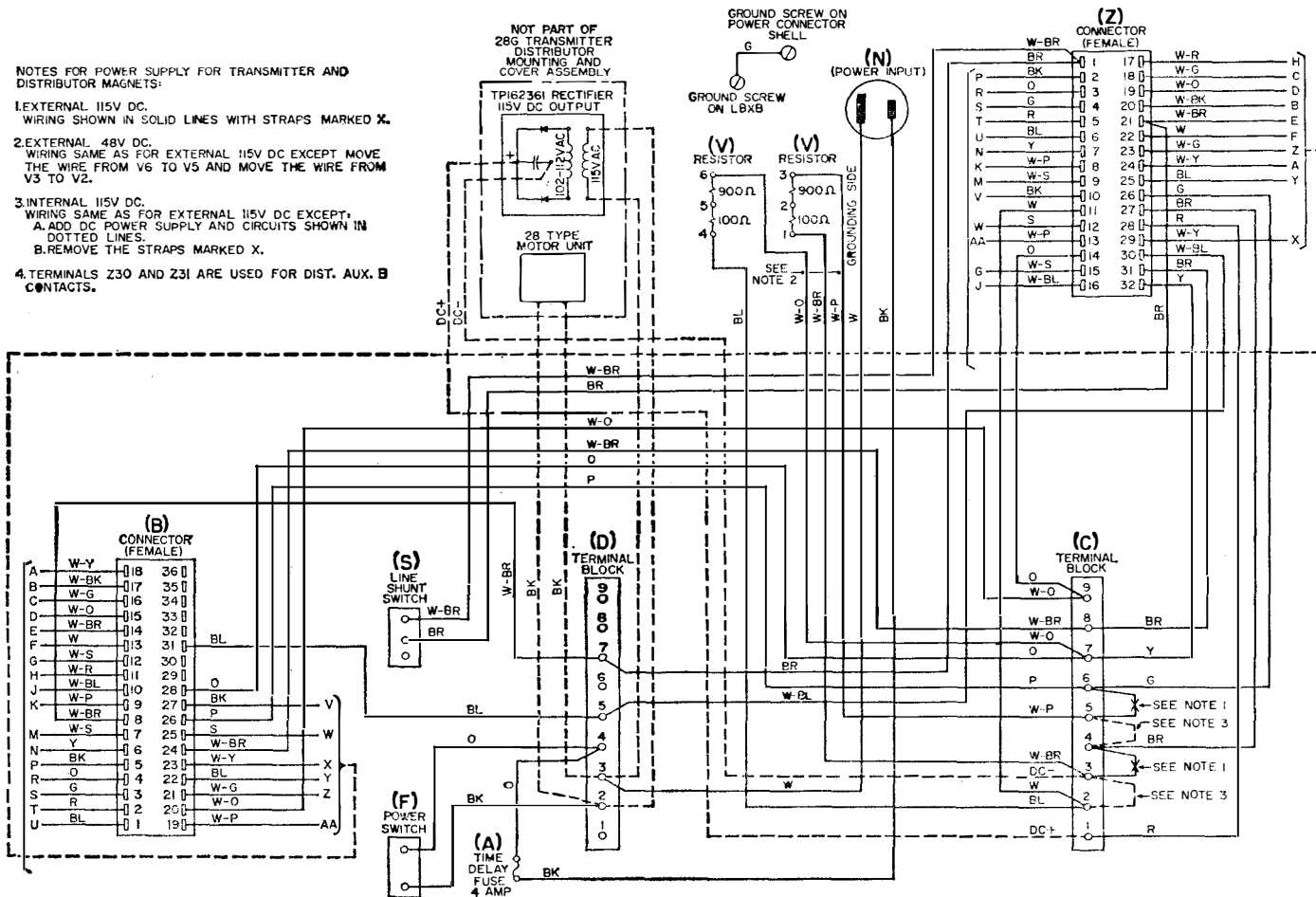
P34.321

Page 1

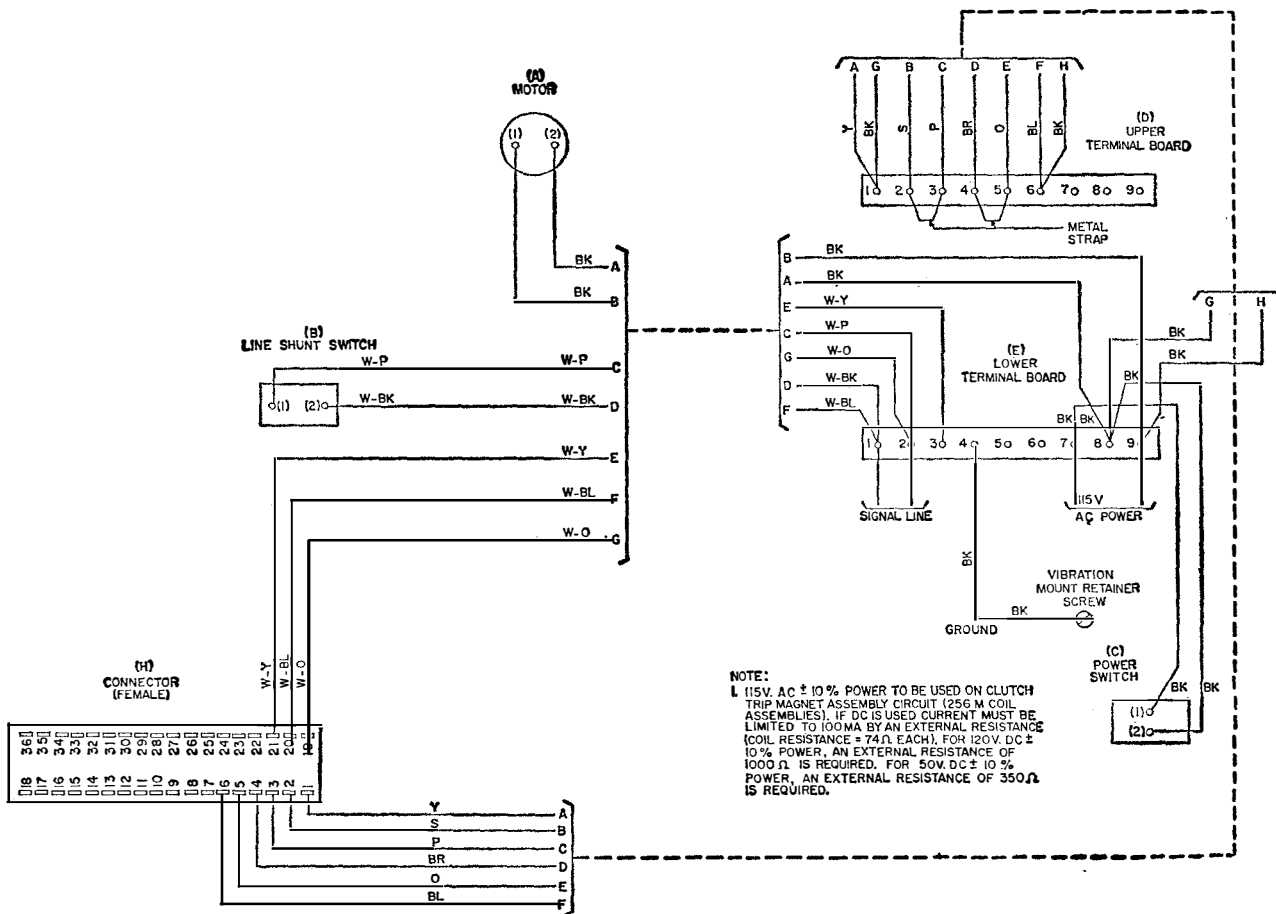
28G AND 28H
TRAN.-DIST.
MTG. &
COVER
ASSEMBLIES

NOTES FOR POWER SUPPLY FOR TRANSMITTER AND DISTRIBUTOR MAGNETS:

1. EXTERNAL 115V DC.
WIRING SHOWN IN SOLID LINES WITH STRAPS MARKED X.
2. EXTERNAL 48V DC.
WIRING SAME AS FOR EXTERNAL 115V DC EXCEPT MOVE THE WIRE FROM V6 TO V5 AND MOVE THE WIRE FROM V3 TO V2.
3. INTERNAL 115V DC.
WIRING SAME AS FOR EXTERNAL 115V DC EXCEPT:
A. ADD DC POWER SUPPLY AND CIRCUITS SHOWN IN DOTTED LINES.
B. REMOVE THE STRAPS MARKED X.
4. TERMINALS Z30 AND Z31 ARE USED FOR DIST. AUX. B CONTACTS.



**28G Transmitter-Distributor Mounting and
Cover Assembly**



28H Transmitter-Distributor Mounting and Cover Assembly

**28G AND 28H
 TRAN.-DIST.
 MTG. &
 COVER
 ASSEMBLIES**

P34.321

Page 3
 3 Pages

11

11