

BELL SYSTEM PRACTICES
Teletypewriter and Data Stations

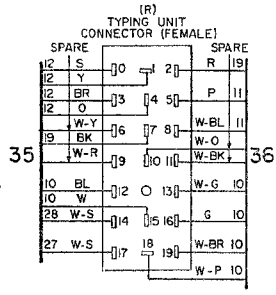
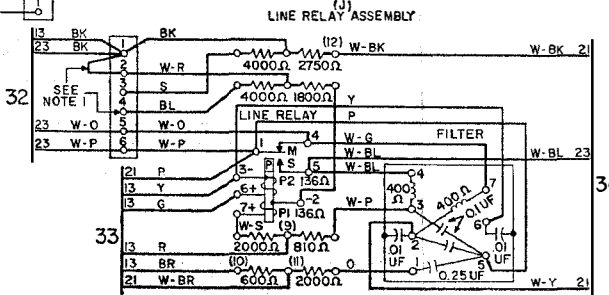
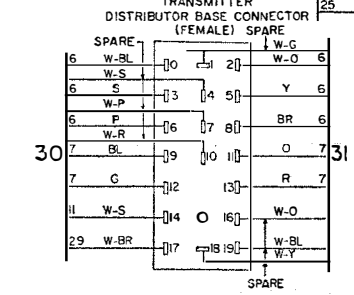
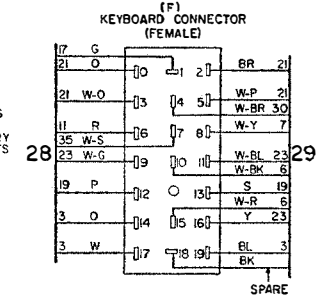
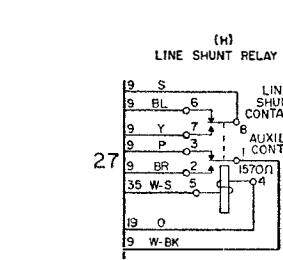
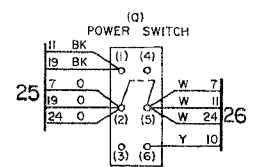
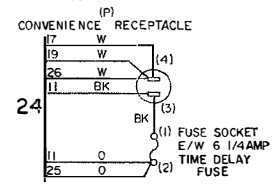
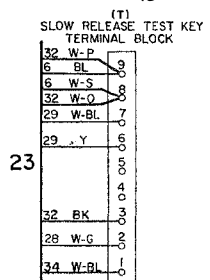
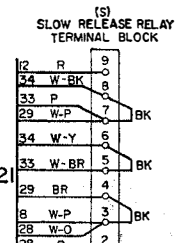
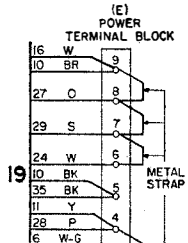
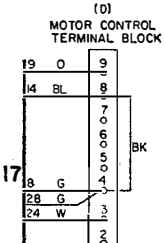
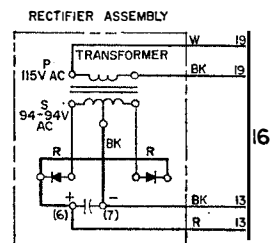
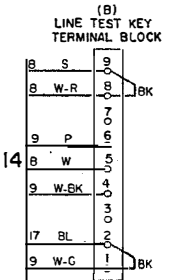
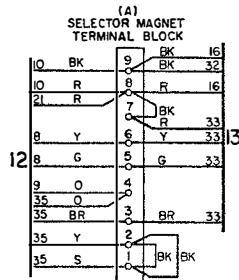
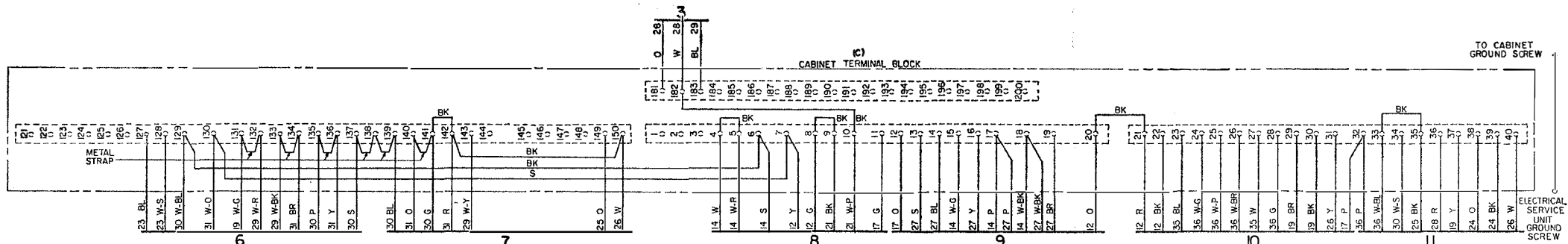
ADDENDUM P34.317
Issue 1, March, 1962
AT&T Co Standard

28F, F-1, H, AND J
ELECTRICAL SERVICE
UNITS
WIRING DIAGRAM

1. GENERAL

1.001 This addendum supplements Section P34.317, Issue 4.

1.002 This addendum is issued to show that a line relay assembly and a rectifier assembly have been added to the wiring of the 28J electrical service unit.



NOTES:
1. CIRCUITS SHOWN FOR 060 AMP NEUTRAL SIGNAL LINE OPERATION. CONNECTION REMOVED J1-J2 AND ADD CONNECTIONS AS TABULATED BELOW.

SIGNAL LINE CURRENT	030 AMP
CONNECTION REMOVED	J1-J2
CONNECTION ADDED	J1-J4

28J ELECTRICAL SERVICE UNIT

BELL SYSTEM PRACTICES
Teletypewriter and Data Stations

SECTION P34.317
Issue 4, April, 1961
AT&T Co Standard

28F, F-1, H, AND J ELECTRICAL SERVICE UNITS WIRING DIAGRAM

1. GENERAL

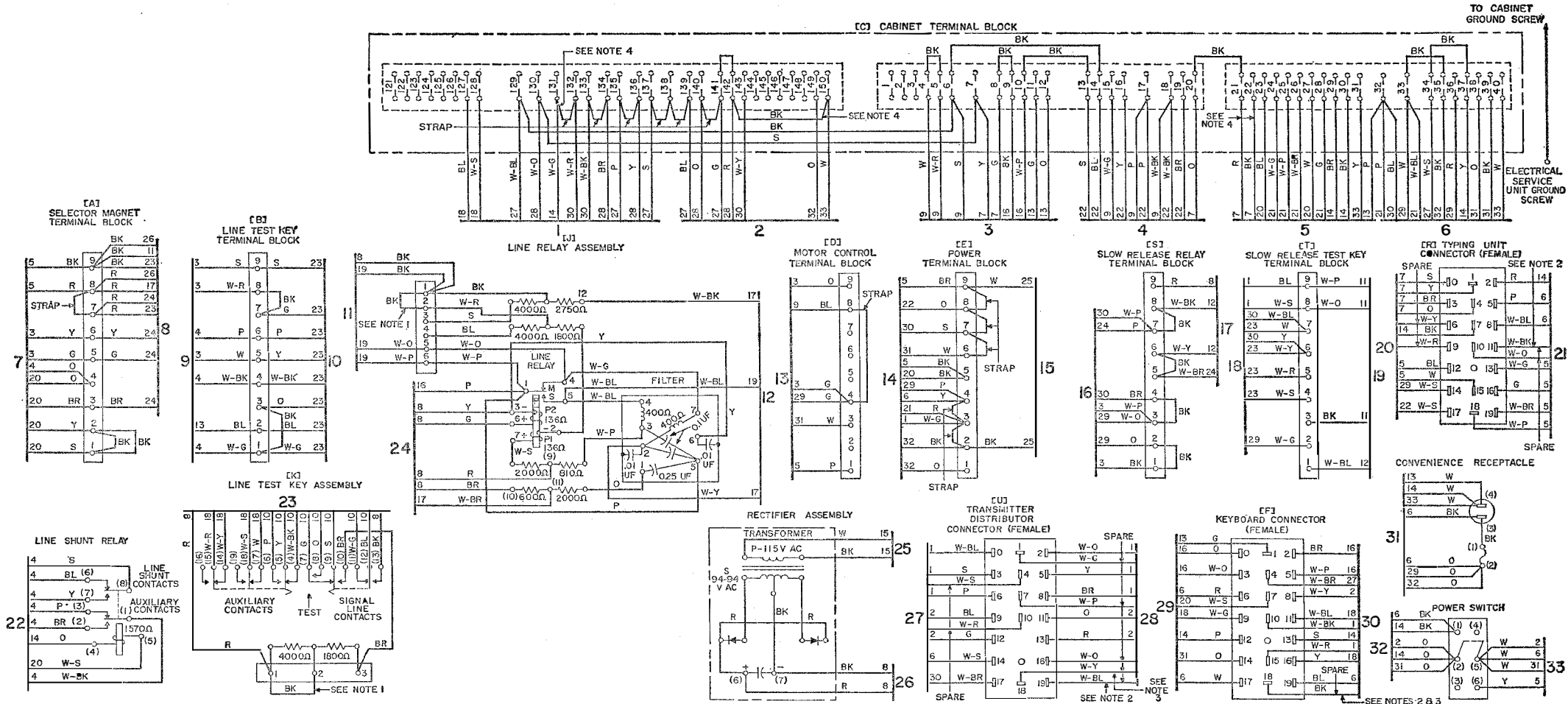
1.01 This section shows the wiring of the 28F, F-1, H, and J electrical service units for use with the 28G cabinet used with the 28 automatic send-receive set.

1.02 This section is reissued to incorporate the addendum and to add Note 5 to the wiring for the 28H electrical service unit.

28F, F-1, H, AND J
ELECTRICAL
SERVICE
UNITS
WIRING
DIAGRAM

P34.317

Page 1



28F Electrical Service Unit

28F ELECTRICAL SERVICE UNIT

NOTES:

1. CIRCUITS SHOWN FOR .060 AMP NEUTRAL SIGNAL LINE OPERATION. FOR .020 AMP OPERATION REMOVE AND ADD CONNECTIONS AS TABULATED BELOW:

SIGNAL LINE CURRENT	.020 AMP
CONNECTION REMOVED	K1-K2, J1-J2
CONNECTIONS ADDED	J3-J4

2. THE SPARE LEADS FROM THE KEYBOARD AND TRANSMITTER DISTRIBUTOR UNITS CONNECTOR PLUGS ARE TERMINATED IN THE RIGHT END OF THE ELECTRICAL SERVICE UNIT. THE SPARE LEADS FROM THE TYPING UNIT PLUG ARE TERMINATED IN THE LEFT END OF THE ELECTRICAL SERVICE UNIT.
3. SPARE LEADS FROM F-18 AND U18 ARE RESERVED FOR POLAR OPERATION OF KEYBOARD AND TRANSMITTER DISTRIBUTOR SIGNAL GENERATORS.
4. ELECTRICAL SERVICE UNIT AND CABINET ARE SHOWN WIRED FOR OPERATION OF START MAGNET OF 28E OR 28H TRANSMITTER DISTRIBUTOR ON AC. WHEN 120 VOLTS DC IS TO BE USED WIRE AS FOLLOWS:

OMIT C-131 TO C-132
C-142 TO C-150

ADD C-21 TO C-142
C-22 TO C-132

IF A 28F OR 28G TRANSMITTER DISTRIBUTOR UNIT IS INSTALLED ALSO ADD:

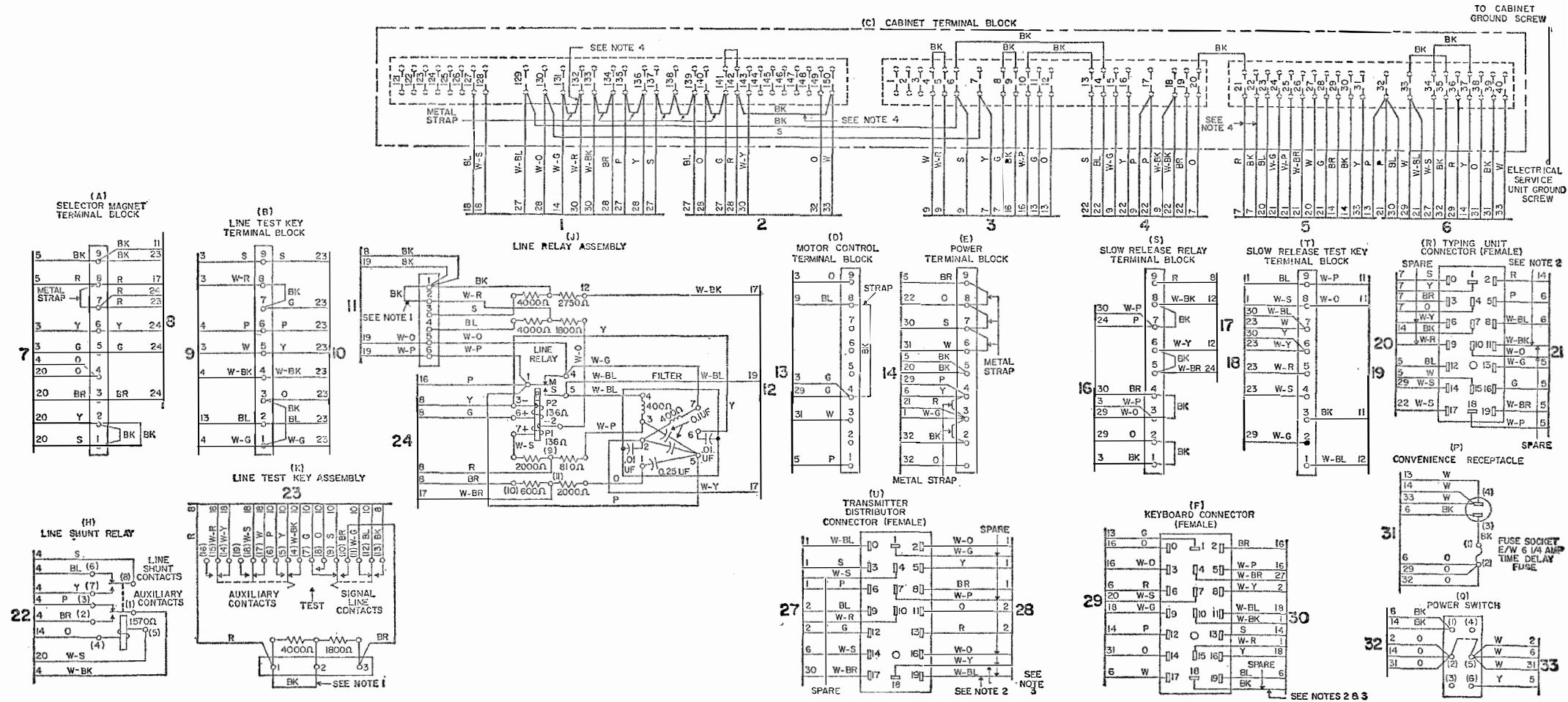
C-83* TO C-132
C-82* TO C-142

*C-82 AND C-83 ARE SHOWN ON 28F AND 28G TRANSMITTER DISTRIBUTOR HOUSING DRAWING.

28F, F-1, H, AND J
ELECTRICAL
SERVICE
UNITS
WIRING
DIAGRAM

P34.317

Page 3



28F-1 ELECTRICAL SERVICE UNIT

NOTES:

1. CIRCUITS SHOWN FOR .060 AMP NEUTRAL SIGNAL LINE OPERATION. FOR .020 AMP OPERATION REMOVE AND ADD CONNECTIONS AS TABULATED BELOW:

SIGNAL LINE CURRENT	.020 AMP
CONNECTION REMOVED	K1-K2, J1-J2
CONNECTIONS ADDED	J3-J4

2. THE SPARE LEADS FROM THE KEYBOARD AND TRANSMITTER DISTRIBUTOR UNITS CONNECTOR PLUGS ARE TERMINATED IN THE RIGHT END OF THE ELECTRICAL SERVICE UNIT. THE SPARE LEADS FROM THE TYPING UNIT PLUG ARE TERMINATED IN THE LEFT END OF THE ELECTRICAL SERVICE UNIT.
3. SPARE LEADS FROM F-18 AND U18 ARE RESERVED FOR POLAR OPERATION OF KEYBOARD AND TRANSMITTER DISTRIBUTOR SIGNAL GENERATORS.
4. ELECTRICAL SERVICE UNIT AND CABINET ARE SHOWN WIRED FOR OPERATION OF START MAGNET OF 28E OR 28H TRANSMITTER DISTRIBUTOR ON AC. WHEN 120 VOLTS DC IS TO BE USED WIRE AS FOLLOWS:

OMIT C-131 TO C-132
C-142 TO C-150

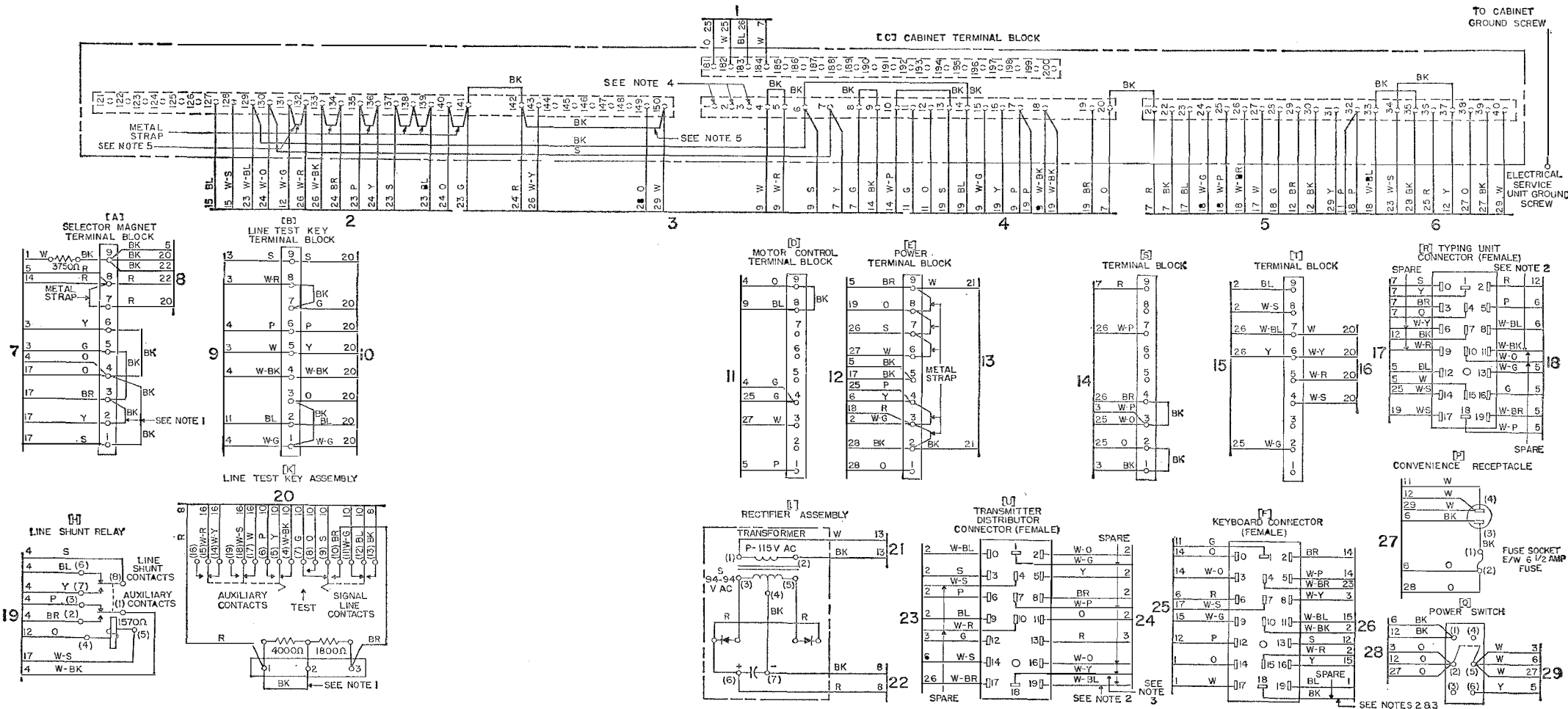
ADD C-21 TO C-142
C-22 TO C-132

IF A 28F OR 28G TRANSMITTER DISTRIBUTOR UNIT IS INSTALLED ALSO ADD:

C-83* TO C-132
C-82* TO C-142

*C-82 AND C-83 ARE SHOWN ON 28F AND 28G TRANSMITTER DISTRIBUTOR HOUSING DRAWING.

28F, F-1, H, AND J
ELECTRICAL
SERVICE
UNITS
WIRING
DIAGRAM



28H Electrical Service Unit

28H ELECTRICAL SERVICE UNIT

NOTES:

1. CIRCUITS SHOWN FOR 0.060 AMP NEUTRAL SIGNAL LINE OPERATION. FOR 0.020 AMP OPERATION, REMOVE AND ADD CONNECTIONS AS TABULATED BELOW:

SIGNAL LINE CURRENT	0.020 AMP
CONNECTION REMOVED	A1-A4, A2-A3, K1-K2
CONNECTIONS ADDED	A1-A2

2. THE SPARE LEADS FROM THE KEYBOARD AND TRANSMITTER DISTRIBUTOR UNITS CONNECTOR PLUGS ARE TERMINATED IN THE RIGHT END OF THE ELECTRICAL SERVICE UNIT. THE SPARE LEADS FROM THE TYPING UNIT PLUG ARE TERMINATED IN THE LEFT END OF THE ELECTRICAL SERVICE UNIT.
3. SPARE LEADS FROM F-18 AND U-18 ARE RESERVED FOR POLAR OPERATION OF KEYBOARD AND TRANSMITTER DISTRIBUTOR SIGNAL GENERATORS.
4. TERMINALS C1-C3 RESERVED FOR CUSTOMERS USE.
5. 28H WIRED FOR USE WITH THE 28E OR 28H TRANS-DIST UNIT. WHEN THE 28F OR 28G TRANS-DIST UNIT IS USED OMIT:
C-131 TO C-132
C-142 TO C-150

28F, F-1, H, AND J
ELECTRICAL
SERVICE
UNITS
WIRING
DIAGRAM

P34.317

Page 7

