

BELL SYSTEM PRACTICES
Teletypewriter and Data Stations

ADDENDUM P34.309
Issue 1, February, 1963
AT&TCo Standard

28D, D-1, D-2, K AND U ELECTRICAL SERVICE UNITS FOR 28-TYPE TYPING REPERFORATOR

WIRING DIAGRAM

1. GENERAL

- 1.001 This addendum supplements Section P34.309, Issue 3.
- 1.002 This addendum is issued to add the wiring of the 28U electrical service units, and to change the title accordingly.

ADDENDUM
P34.309

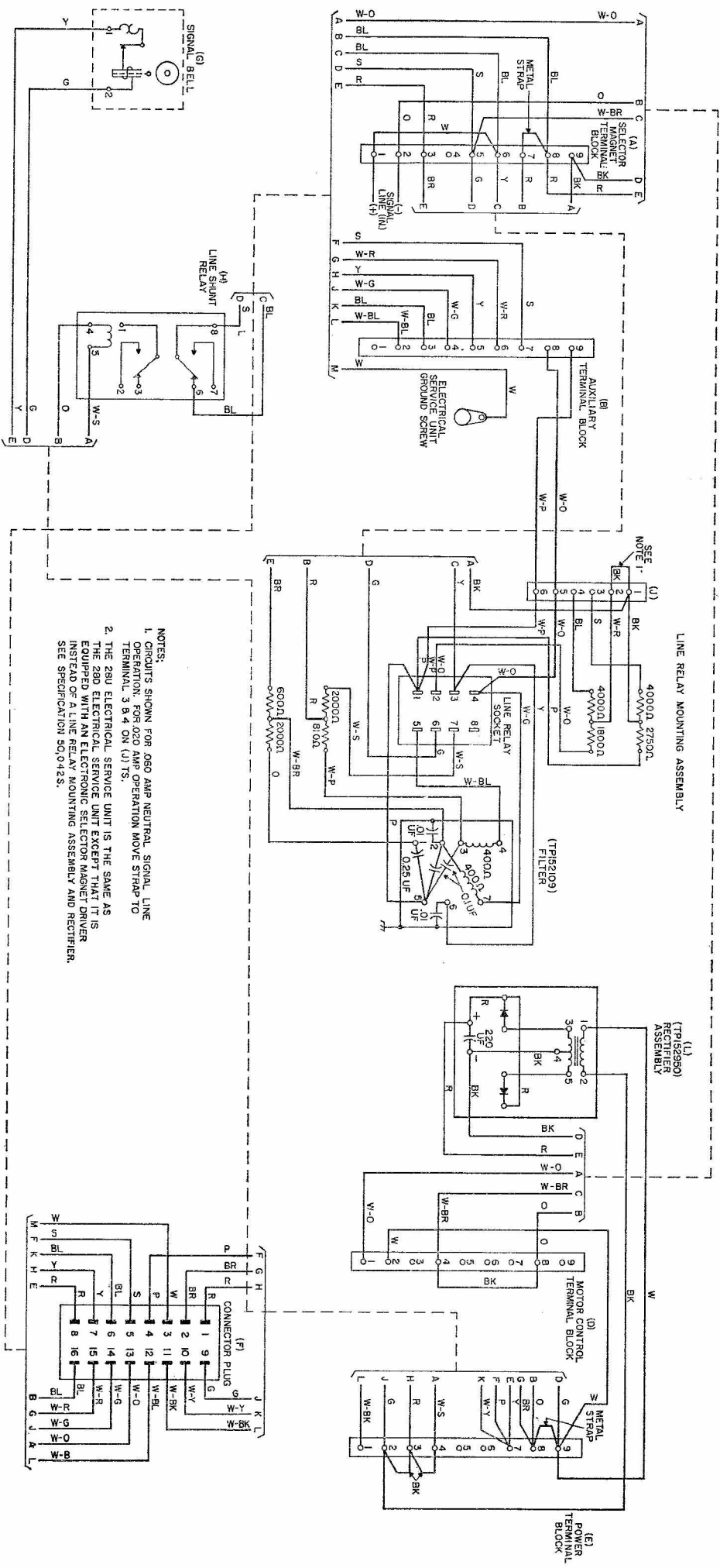
Page 1

**28D, D-1, D-2, K AND U
ELECTRICAL
SERVICE
UNITS
WIRING
DIAGRAM**

28D AND 28U ELECTRICAL SERVICE UNITS

SEE NOTE 2

LINE RELAY MOUNTING ASSEMBLY



- NOTES:
1. CIRCUITS SHOWN FOR 300 AMP NEUTRAL SIGNAL LINE OPERATION. FOR 100 AMP OPERATION MOVE STRAP TO TERMINAL 3 & 4 ON (J) TS.
 2. THE 28U ELECTRICAL SERVICE UNIT IS THE SAME AS THE 28D ELECTRICAL SERVICE UNIT EXCEPT THAT IT IS EQUIPPED WITH AN ELECTRONIC SELECTOR MAGNET DRIVER. SEE SPECIFICATION SO.0-425.

28D and 28U Electrical Service Units

BELL SYSTEM PRACTICES
Teletypewriter and Data Stations

SECTION P34.309
Issue 3, November, 1961
AT&T Co Standard

28D, D-1, D-2 AND K ELECTRICAL SERVICE UNITS FOR 28-TYPE TYPING REPERFORATOR WIRING DIAGRAM

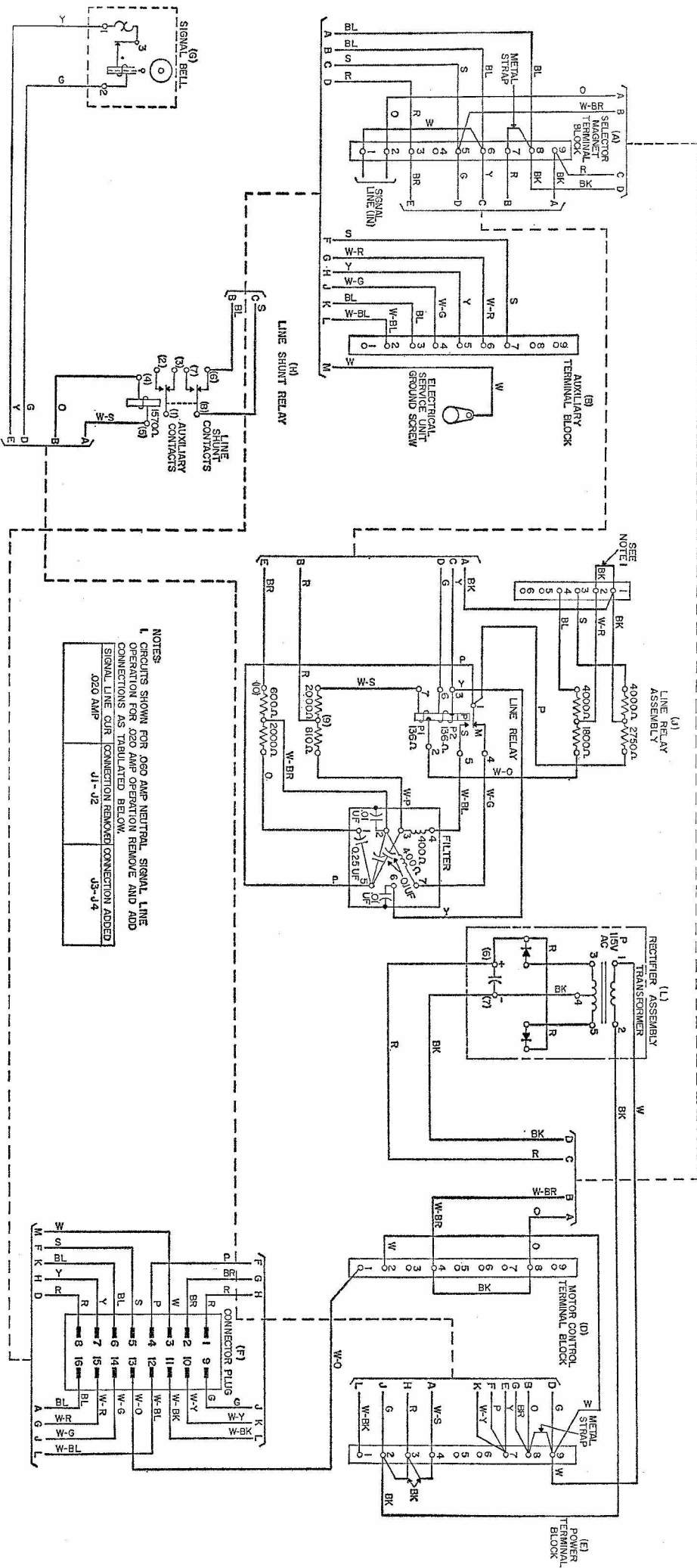
1. GENERAL

- 1.01 This section shows the wiring of the 28D, D-1, D-2 and K electrical service units.
- 1.02 This section is reissued to add the wiring of the 28D-2 electrical service unit. The wiring of the 28D electrical service unit has been changed to add a white-orange wire from terminal 8 and a white-purple wire from terminal 9 of the auxiliary terminal block (B) to terminals 5 and 6 respectively on the line relay mounting assembly terminal block (J) and to show the internal wiring of the TP152109 filter and TP152950 rectifier.

**28D, D-1, D-2
AND K ELECTRICAL
SERVICE
UNITS
WIRING
DIAGRAM**

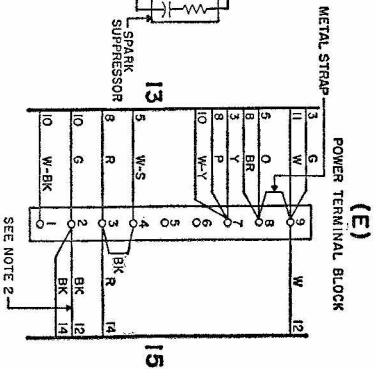
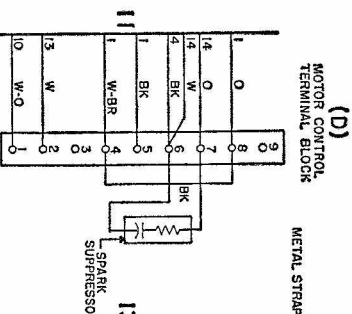
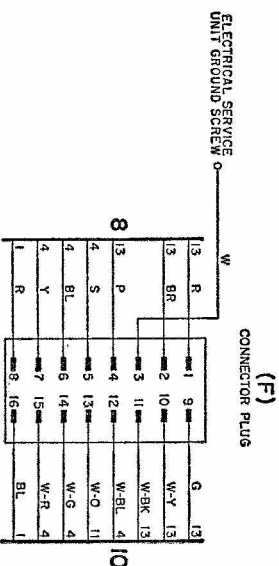
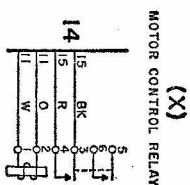
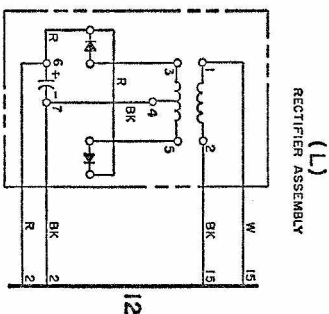
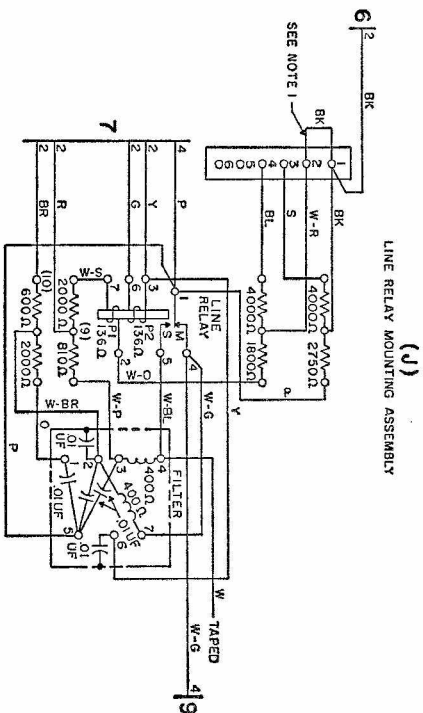
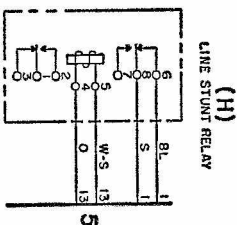
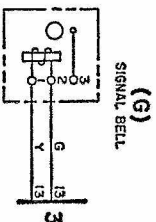
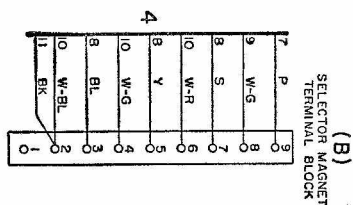
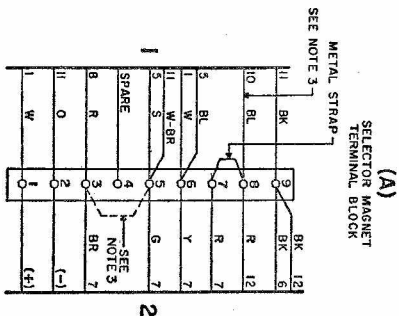
P34.309

Page 1



NOTES
 1. CIRCUITS SHOWN FOR 0.60 AMP NEUTRAL SIGNAL LINE
 OPERATION FOR 0.20 AMP OPERATION REMOVE AND ADD
 CONNECTIONS AS TABULATED BELOW.
 SIGNAL LINE CURT CONNECTION REMOVED CONNECTION ADDED
 0.20 AMP J1-J2 J3-J4

28D-1 Electrical Service Unit



NOTES:

1. CIRCUITS SHOWN FOR 0.060 AMP NEUTRAL SIGNAL LINE OPERATION FOR 0.020 AMP OPERATION REMOVE AND ADD CONNECTIONS AS TABULATED BELOW

SIGNAL LINE CURRENT	CONNECTION REMOVED	CONNECTION ADDED
0.020 AMP	J1-J2	J3-J4

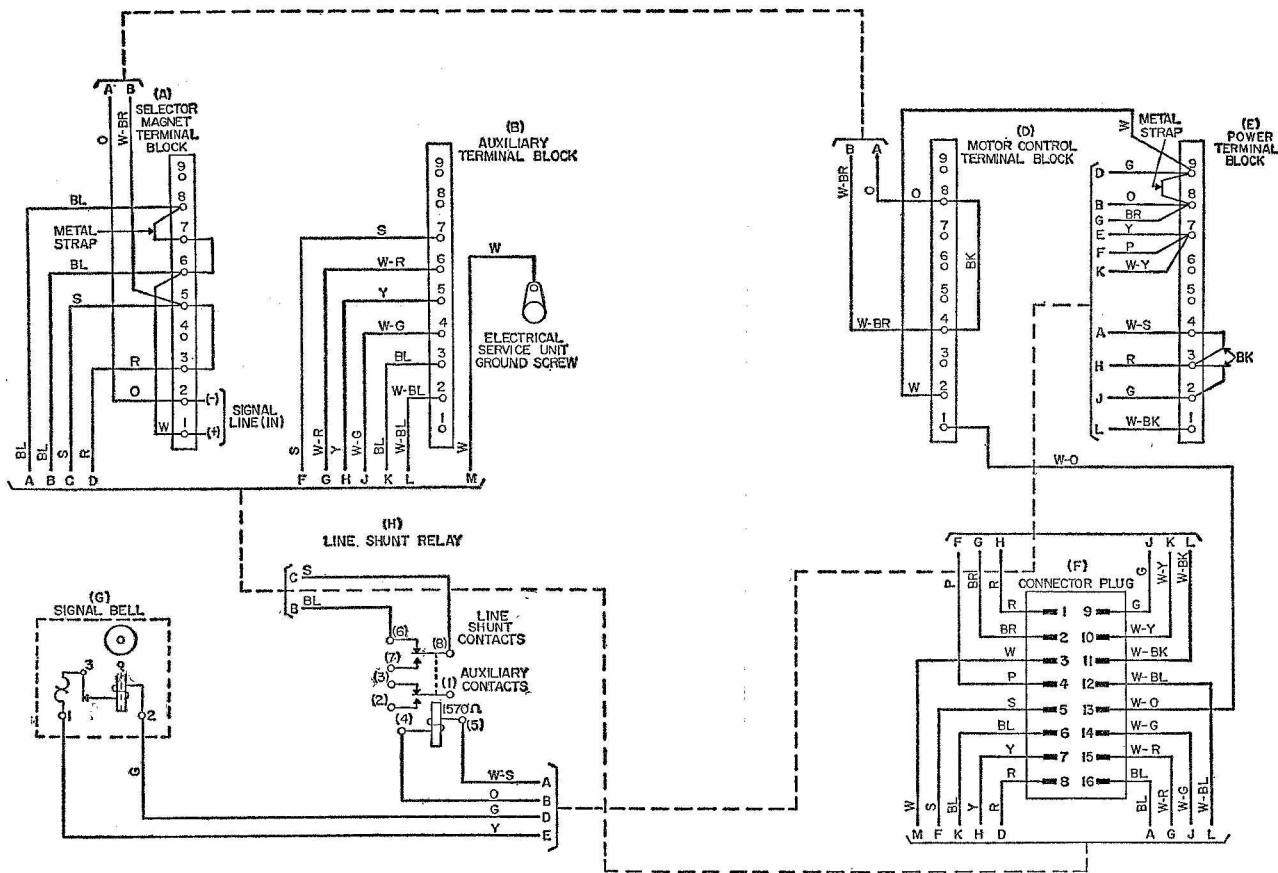
2. RECTIFIER SHOWN CONTROLLED BY POWER SWITCH FOR CONTINUOUS OPERATION REMOVE LEAD 12-BK FROM TERMINAL 2 AND CONNECT TO TERMINAL 1 OF E (POWER TERMINAL BLOCK).
3. SELECTOR MAGNETS CAN BE CONNECTED DIRECTLY IN THE SIGNAL LINE CIRCUIT FOR NEUTRAL OPERATION AS FOLLOWS:
 - A) REMOVE LINE RELAY
 - B) 20 MILLIAMPERE 60 & 75 WPM OPERATION (OR ANY INTERMEDIATE SPEED)
 - 1) STRAP A5 TO A3
 - 2) MOVE BLUE LEAD FROM TERMINAL A8 TO TERMINAL A6
 - C) 50 MILLIAMPERE, 60,75 & 100 WPM OPERATION (OR ANY INTERMEDIATE SPEED)
 - 1) STRAP A5 TO A3
 - 2) MOVE BLUE LEAD FROM TERMINAL A8 TO TERMINAL A6
 - 3) CHANGE WIRING ON SELECTOR MAGNETS FOR 60 MILLIAMPERE OPERATION

28D-2 Electrical Service Unit

28D, D-1, D-2
AND K ELECTRICAL
SERVICE
UNITS
WIRING
DIAGRAM

P34.309

Page 5



28K Electrical Service Unit