

NOTES:

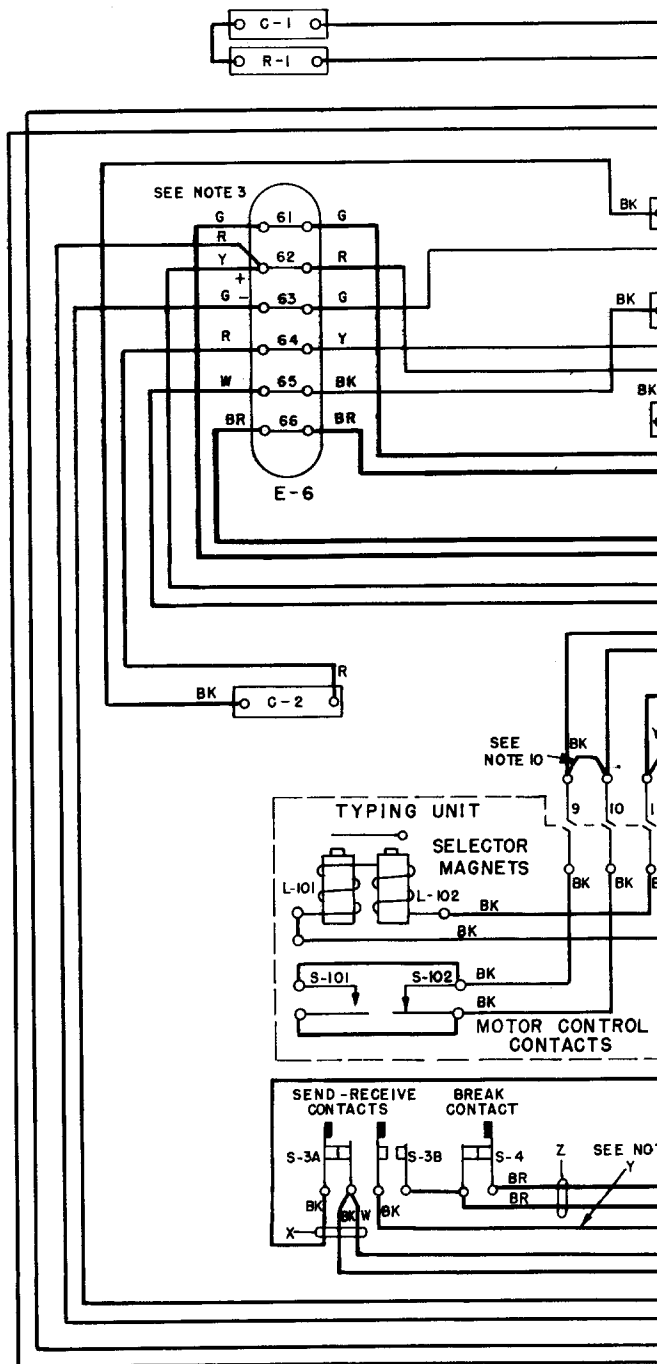
1. THE MOTOR CONTROL RELAY IS NOT WIRED AT FACTORY. TO USE RELAY, REMOVE, SPLICE TOGETHER AND TAPE WIRES SHOWN CONNECTED TO A AND B ON SWITCH S-1. CUT WIRE LOOP AT SWITCH AND CONTROL RELAY COIL K-1 AND CONNECT TO RESPECTIVE UNITS. FOR BREAK OPERATION CUT WIRE LOOP F-G, CONNECT G TO CONTROL RELAY CONTACT E AND F TO CONTACT D. FOR MAKE OPERATION CUT LOOP F-G, CONNECT G TO CONTACT C AND CONNECT F TO CENTER CONTACT D AS FOR BREAK OPERATION ABOVE. USE 0.065 AMPERES THROUGH COIL L-1 TO OPERATE CONTROL RELAY.
2. FOR BREAK OPERATION OF CONTROL RELAY K-1 INVERT POWER SWITCH S-1 SO THAT ON AND OFF DESIGNATIONS ON COVER AGREE WITH OPERATION OF SWITCH.
3. TO OPERATE PRINTER WITHOUT LINE RELAY K-201, MOVE YELLOW WIRE FROM TERMINAL 62 TO 61; MOVE WHITE WIRE FROM TERMINAL 65 TO 66; REMOVE AND TAPE GREEN WIRE GOING TO LINE RELAY K-201 FROM TERMINAL 61.
4. FOR 0.02-AMP. SIGNAL LINE OPERATION, CONNECT THE 8000-OHM RESISTOR R-2 IN SERIES WITH THE BIAS CIRCUIT BY MOVING ONE OF THE LEADS ON A TO B.
5. RECOMMENDED FUSETRON OR FUSTAT (AND ALTERNATE FUSE) PROTECTION.

| | | |
|----------------------------------|--------------------|------------------------------------|
| MOTOR | FUSETRON OR FUSTAT | FUSE |
| 110 VOLTS A.C. 60-CYCLE GOVERNED | 1.60-AMPS | 3-AMPS <small>SEE FUSE F-1</small> |
6. TO DISABLE SEND RECEIVE BREAK MECHANISM: (A) SPLICE AND TAPE WIRES FROM SWITCH S-3A MARKED X; (B) TAPE WIRE TO S-3B MARKED Y; (C) SPLICE AND TAPE WIRES TO S-4 MARKED Z.
7. ELEMENTS SHOWN DOTTED ARE UNDERNEATH BASE CASTING.
8. WHEN THE A-C SERIES MOTOR MUST BE DRIVEN FROM 25-CYCLE POWER SUPPLY, CONNECT A 25 OHM RESISTOR IN SERIES WITH THE POWER LEADS IF COMPENSATION HAS NOT BEEN MADE FOR 25 CYCLES BY ADJUSTMENT OF THE RECTIFIER (SUCH AS REC29) TAPS.
9. WHEN KEYBOARD IS NOT INSTALLED AND POLAR SIGNALS ARE RECEIVED, REMOVE JUMPER BETWEEN BACK CONTACT NUMBER 51 AND SLIP CONNECTION CONTACT NUMBER 56 ON BASE.
10. CONTACTS SHOWN BETWEEN TERMINALS 9 AND 10 ARE PRESENT ON TYPING UNIT ONLY WHEN MOTOR CONTROL ON FIGURE H IS USED. WHEN MOTOR CONTROL (MECHANICAL THROUGH S-101 AND S-102) IS USED, REMOVE STRAP BETWEEN 9 AND 10.
11. K-201 RELAY (RY 30; W. E. 255-A)-136 OHMS PER WINDING (FOR 0.060 OR 0.020 AMPERE SIGNALING—SEE NOTE 4 ABOVE)
12. WIRE COLOR CODE (SOLID COLOR OR TRACER IN WHITE WIRE)

| | | |
|----------|----------|---------|
| BK BLACK | O ORANGE | BL BLUE |
| BR BROWN | Y YELLOW | W WHITE |
| R RED | G GREEN | |

LEGEND:

- WIRING
- MAIN SIGNAL PATH WIRING
- INCLOSES UNITS
- INCLOSES FILTERS
- OUTLINES ELEMENTS UNDER CASTING
- *— INDICATES WIRES TAPED OR SPLICED AND TAPED



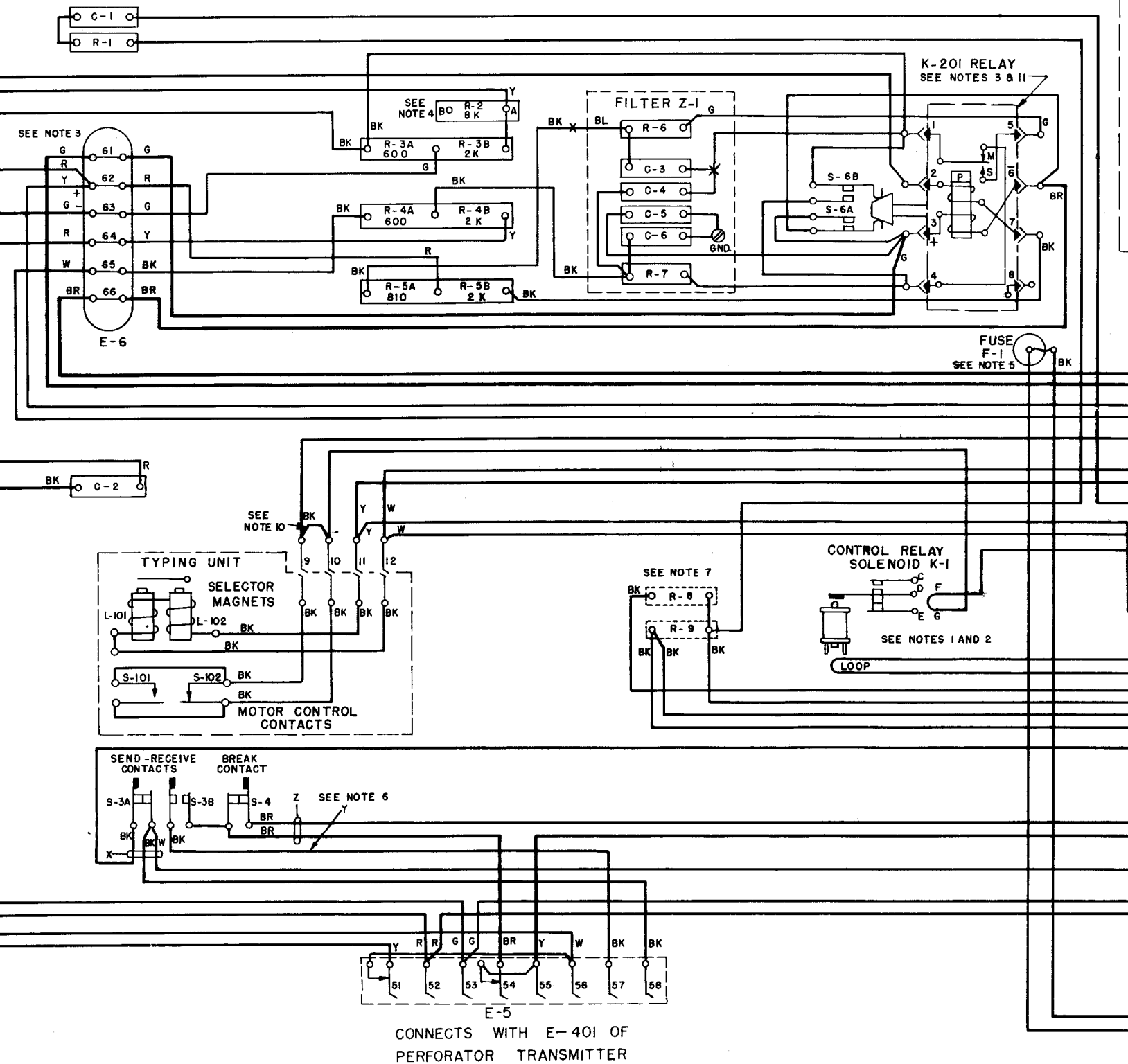


Figure 269. Typing unit, base and relay, actual wiring diagram.

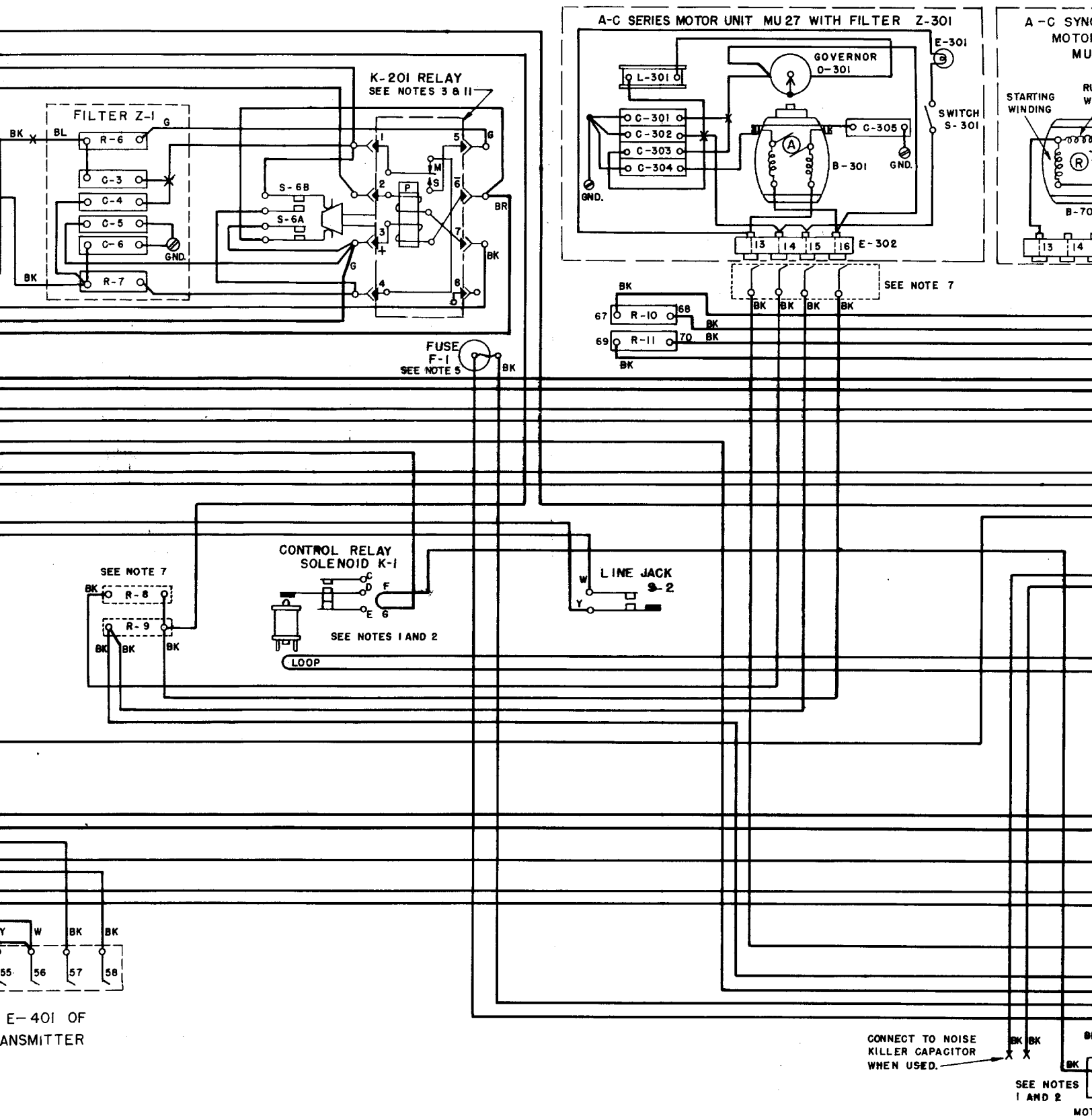
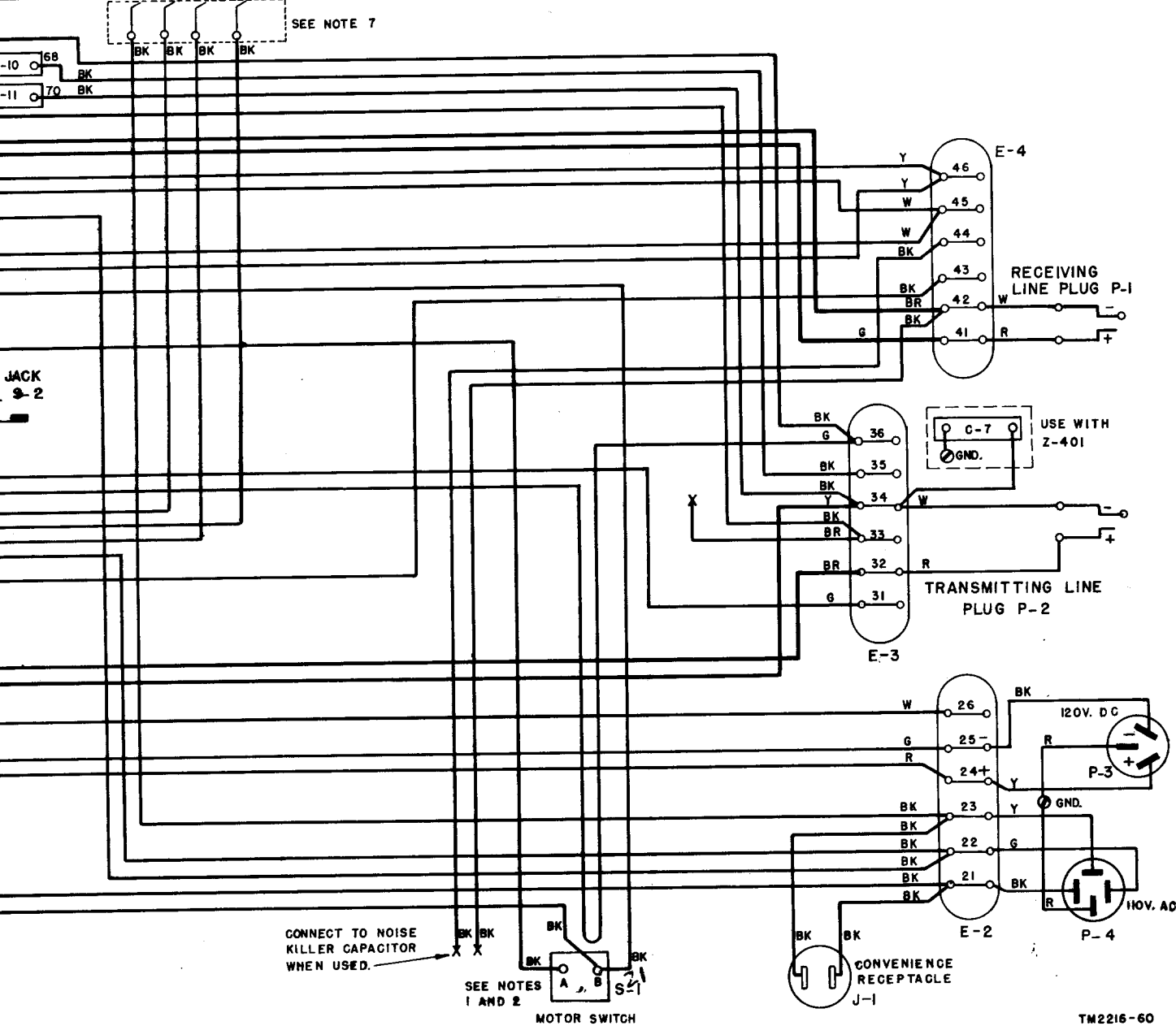
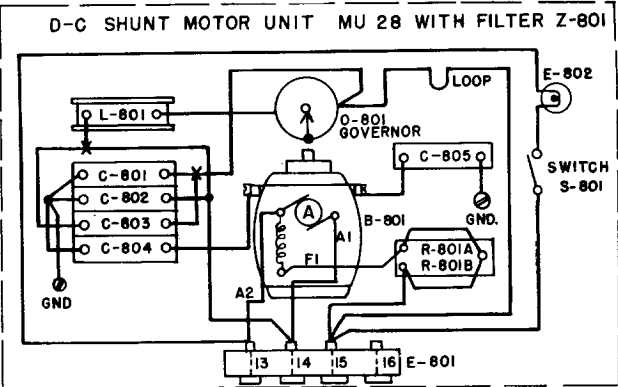
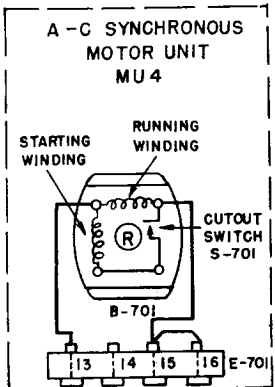
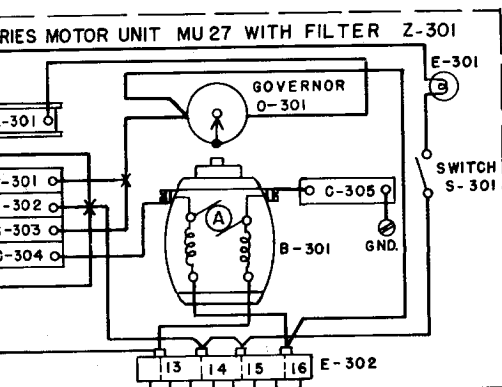


Figure 269. Typing unit, base and relay, actual wiring diagram.



TN2216-60