

# 4264 WD

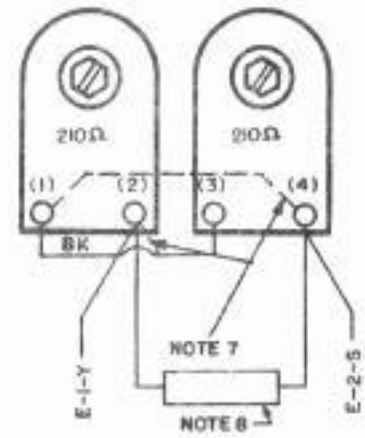
| ISSUE | DATE     | AUTH NO  |
|-------|----------|----------|
| 1     | 9-24-60  | CC 997   |
| 2     | 11-18-60 | CC-184   |
| 3     | 5-16-62  | 73431    |
| 4     | 2-20-64  | 79225-1  |
| 5     | 9-8-64   | 79225-9  |
| 7     | 3-16-65  | 79225-10 |
| 8     | -        | R-1706   |
| 9     | 9-28-66  | 91161    |

## NOTES:

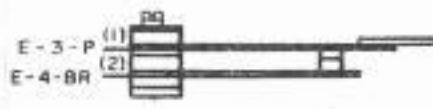
- WIRING LEGEND:**
- COLOR CODE:**  

|            |                    |
|------------|--------------------|
| BK - BLACK | W-BK - WHITE-BLACK |
| BR - BROWN | W-BR - WHITE-BROWN |
| R - RED    | W-R - WHITE-RED    |
| O - ORANGE | W-O - WHITE-ORANGE |
| Y - YELLOW | W-Y - WHITE-YELLOW |
| G - GREEN  | W-G - WHITE-GREEN  |
| BL - BLUE  | W-BL - WHITE-BLUE  |
| P - PURPLE | W-P - WHITE-PURPLE |
| S - SLATE  | W-S - WHITE-SLATE  |
| W - WHITE  |                    |
- CONNECTORS VIEWED FROM SOLDER TERMINAL ENDS
- ALL CONTACTS SHOWN IN UNOPERATED POSITION.
- ASSOCIATED CABLES:**  
 173440 CABLE ASSEMBLY (LXD 11)  
 307288 CABLE ASSEMBLY (LXD 29,35)
- THE NUMBERS ENCLOSED BY PARENTHESES ARE USED FOR REFERENCE AND ARE NOT MARKED ON THE PARTS.
- UNIT EQUIPPED WITH 262 COIL ASSEMBLY (RESISTANCE 210Ω EACH). THE OPERATING CURRENT MUST BE 50 MA. 120V-DC FOR EXTERNAL PULSING.  
  
 FOR 110V AC NON-PULSING OPERATION, RELOCATE STRAP ON TERMINAL (1) TO TERMINAL (2). ADD STRAP BETWEEN TERMINALS (1) AND (4) FOR PARALLEL OPERATION OF MAGNETS.
- 178535 SPARK SUPPRESSOR ASSEMBLY (153E31 NETWORK) USED ON LXD 29 ONLY.
- TERMINAL NO 21 ON CONNECTOR E IS RESERVED FOR POLAR SIGNAL.
- STRAP WITH 22 GAUGE WIRE AS INDICATED.
- FOR PROPER R.F. FILTERING POLARITY OF FILTERS MUST BE MAINTAINED WHEN 174422 FILTER IS USED. UNIT AS FURNISHED IS WIRED FOR "MARKING" CONTACT POSITIVE (+) "SPACING" CONTACT NEGATIVE (-). TO REVERSE POLARITY OF CONTACTS SO THAT THE "MARKING" CONTACT IS NEGATIVE (-) AND "SPACING" POSITIVE (+) MAKE THE FOLLOWING CONNECTIONS IN CONTACT BOX ASSEMBLY:  
 1. MOVE BLACK LEAD OF BOTTOM FILTER FROM "MARKING" CONTACT TO "SPACING" CONTACT.  
 2. MOVE GREEN LEAD OF TOP FILTER FROM "SPACING" CONTACT TO "MARKING" CONTACT.  
  
 POLARITY MAY BE DISREGARDED WHEN UNITS ARE FURNISHED WITH 174421 FILTER. COLOR CODING OF FILTER LEADS DOES NOT APPLY TO 174421 FILTER.

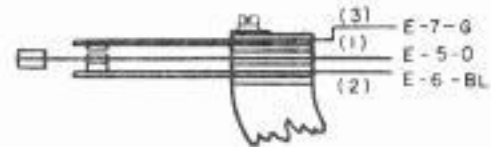
**A**  
TRANSMITTER DISTRIBUTOR CLUTCH MAGNETS



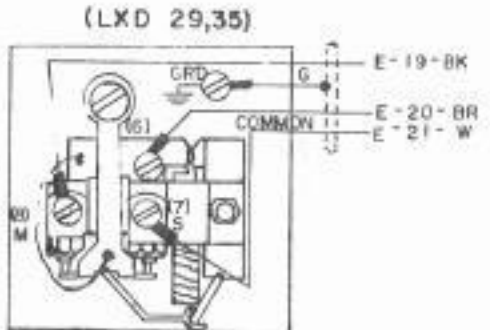
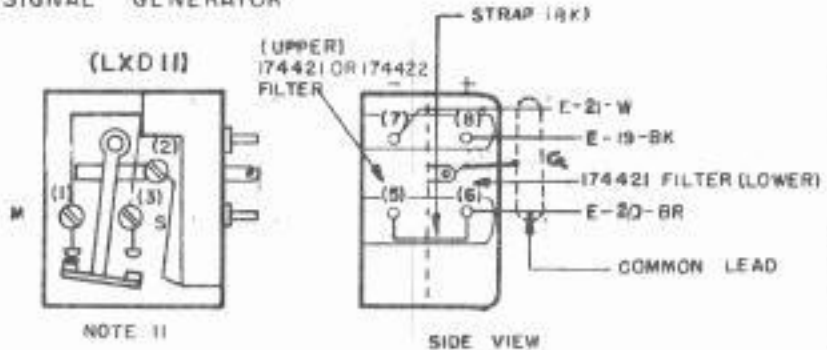
**B**  
CONTROL LEVER CONTACT ASSEMBLY



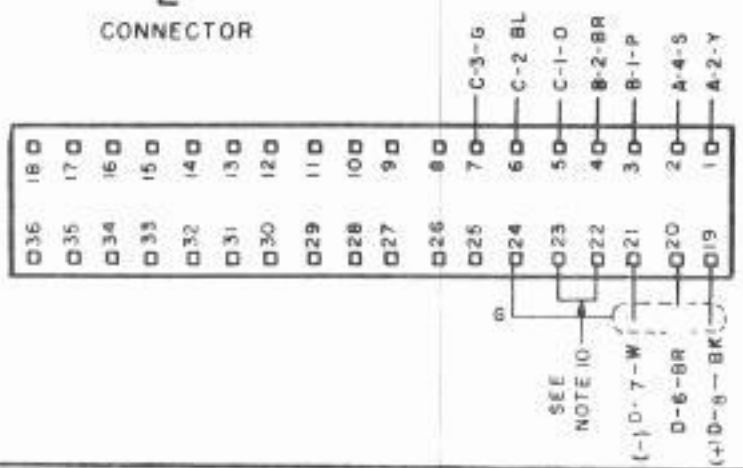
**C**  
TAPE - OUT CONTACT ASSEMBLY



**D**  
TRANSMITTER DISTRIBUTOR SIGNAL GENERATOR



**E**  
CONNECTOR



ACTG  
WIRING DIAGRAM  
MODEL 28  
TRANSMITTER  
DISTRIBUTOR  
LXD 11, 29, 35

### APPROVALS

D AND R: *[Signature]*  
E OF M: *[Signature]*

ENR/MSK

PRCD NO. 4264 WD

DATE 6-8-60

PD FILE 18-A 65-2 219 A

DRAWN WPH CHKD

ENGD. DCL APPD

TELETYPE CORPORATION

4264 WD