

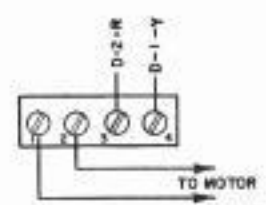
4262 WD

REVISIONS

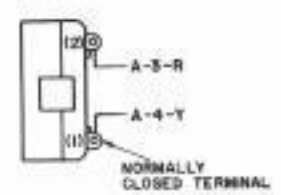
ISSUE	DATE	AUTH. NO.
2	8-24-60	CC-94
3	11-18-60	CC-182
4	11-22-60	75193
5	4-16-64	79225-7
6	9-8-64	79225-10
7	8-1-65	79225-13
8	9-15-66	91295-RC
9	1-30-68	94715

- NO. NOTES**
- POWER CIRCUITS WIRED FOR 115 V AC OR DC OPERATION.
 - WIRE COLOR CODE:
BK - BLACK P - PURPLE
BR - BROWN G - GREEN
BL - BLUE Y - YELLOW
W - WHITE O - ORANGE
R - RED S - SLATE
 - CONNECTORS VIEWED FROM SOLDER TERMINAL ENDS.
 - LX53,69,70 EMPLOYS NEGATIVE VOLTAGE FOR MARKING CONTACT. UPPER R.F. FILTER IS CONNECTED TO MARKING CONTACT. LOWER R.F. FILTER IS CONNECTED TO SPACING CONTACT.
 - POLARITY MUST BE MAINTAINED ONLY WHEN 174422 FILTER IS USED. POLARITY MAY BE DISREGARDED WHEN 174421 FILTER IS USED. COLOR CODING OF FILTER LEADS DOES NOT APPLY TO 174421 FILTER.
 - WIRING LEGEND:
— Distant Terminating Area
— Distant Terminating Designation
— Wire Color Code
D-Z-R
H-2-S

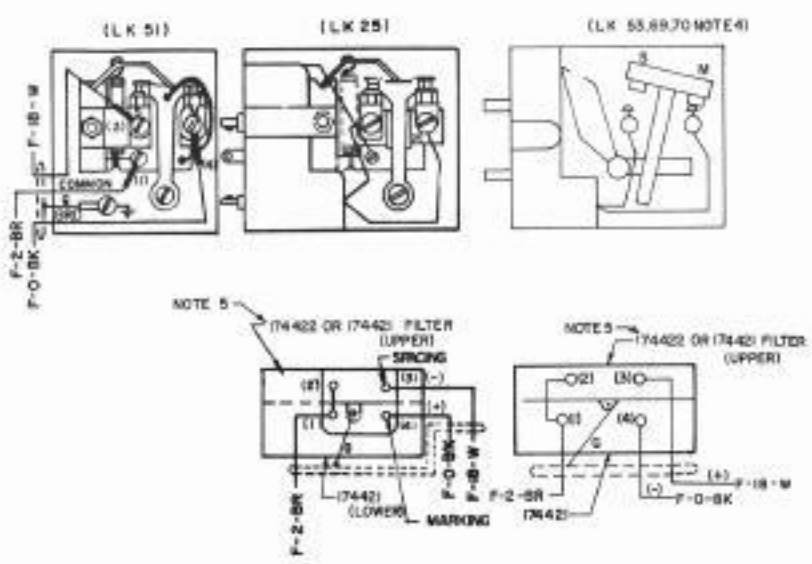
A
MOTOR TERMINAL BLOCK



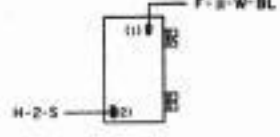
D
MARGIN INDICATOR SWITCH



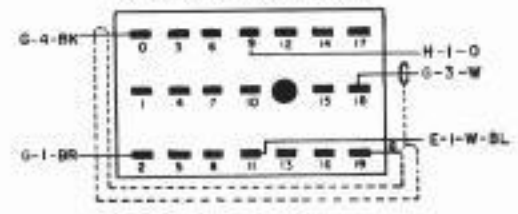
G
CONTACT BOX ASSEMBLIES



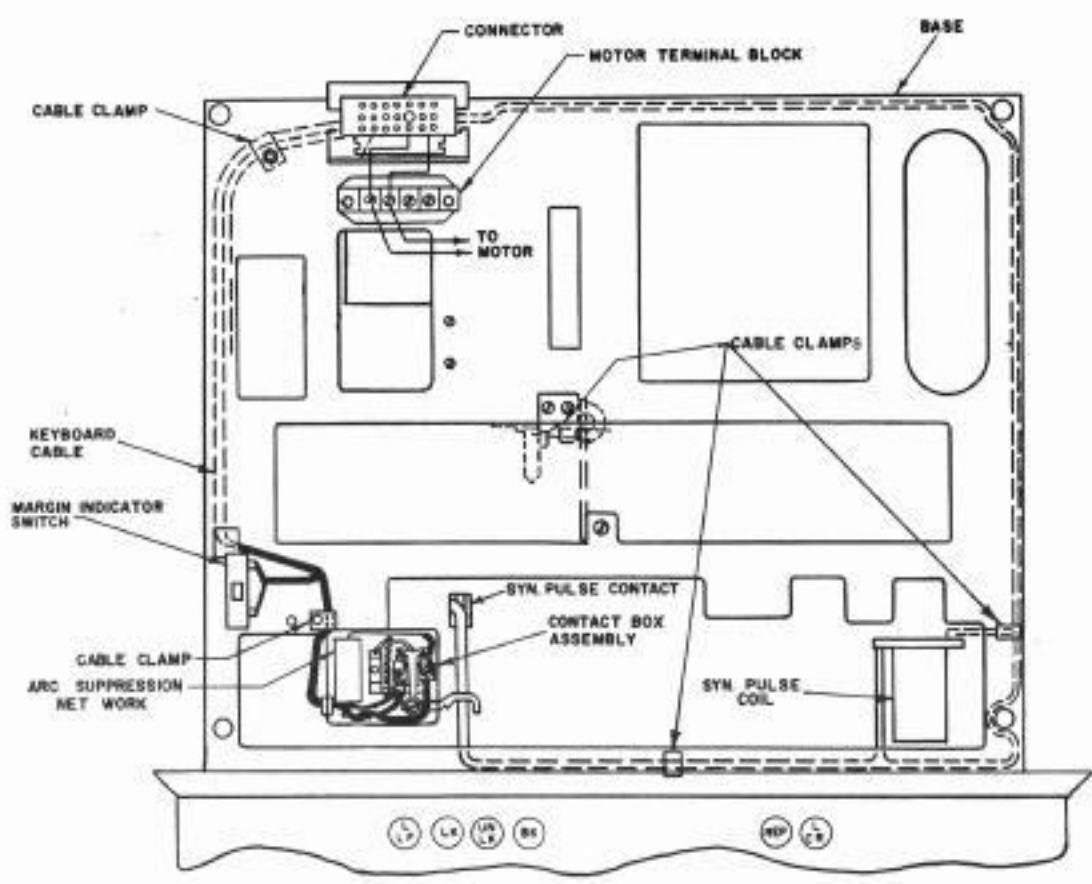
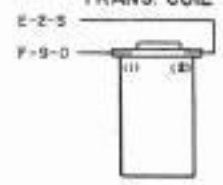
E
SYN. PULSE TRANS. CONTACT



F
KEYBOARD CONNECTOR



H
SYN. PULSE TRANS. COIL



CABLE ROUTING
TOP VIEW

ACTUAL WIRING DIAGRAM FOR MODEL 28 KEYBOARD LK25 LK51 LK53 LK69 LK70

APPROVALS
D AND R: E OF M:

E-NUMBER
PROD. NO. 4262WD
DATE 6-8-60
P.D. FILE NO. 18-465/2.2194
DRAWN P.K. CHKD.
ENGD. D.C.L. APPD.

TELETYPE CORPORATION

4262WD