

28 COMPACT KEYBOARD SEND-RECEIVE
AND RECEIVE-ONLY TELETYPEWRITER SETS
INSTALLATION

CONTENTS	PAGE
1. GENERAL	1
2. INSTALLATION	1
SPACE REQUIREMENTS	1
UNPACKING	1
MOUNTING	2
A. Special Shock Mounting	2
B. Normal Mounting	2
SPEED INDICATOR PLATE	2
ENABLING THE TIME DELAY MECHANISM	4
ELECTRICAL CONNECTIONS	4
PAPER AND RIBBON	4
3. OPERATING TESTS	5
1. GENERAL	
1.01 This section is issued to cover instal- lation and check out procedures for the 28 Compact Keyboard Send-Receive and Receive- Only Teletypewriter Sets.	
1.02 References made to left or right, top or bottom, and front or rear apply to the set in its normal position as viewed from the front.	
1.03 If necessary, refer to "Disassembly and Reassembly, 28 Keyboard, Base, Cover, and Motor for Compact KSR and RO Teletype- writer Sets" for removal of the cover and typing unit.	

2. INSTALLATION

SPACE REQUIREMENTS

2.01 The overall sizes of the 28 Compact Key-
board Send-Receive (KSR) and Receive-
Only (RO) Sets are approximately:

	Depth	Width	Height
KSR	16"	16-1/2"	10"
RO	12"	16-1/2"	10"

UNPACKING

2.02 Each set is shipped completely assem-
bled in a single container. Exercise
care when unpacking.

- (a) Cut tape sealing upper flaps of outer carton.
- (b) Remove styrofoam blocks from upper corners.
- (c) Remove inner lining from top of set.
- (d) Remove set by lifting wooden pallet out of carton.
- (e) Remove all packing tape from cover.

2.03 The base or keyboard is attached to a
wooden pallet with studs and nuts to dis-
able the vibration mounts during shipment.
These studs must be removed for normal instal-
lation and use. If special vibration isolation is
desired, the studs may be left in place and
special shock mounts fastened to the 1/4-20
threads. The shipping stud details are shown in
Figure 1. The locations of the studs for the RO

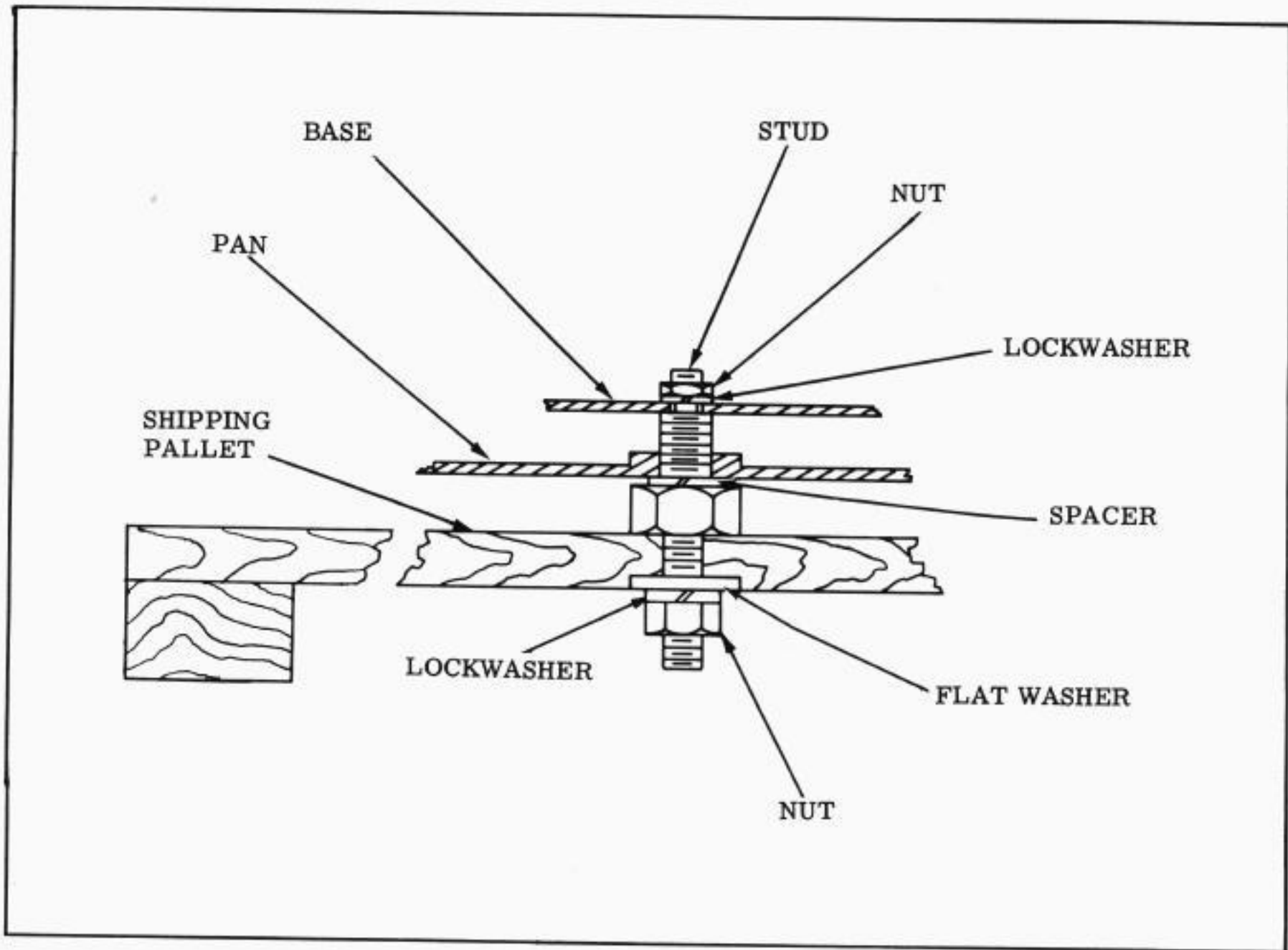


Figure 1 - Shipping Stud Details

and KSR are shown in Figures 2 and 3, respectively.

MOUNTING

A. Special Shock Mounting

2.04 With the pallet raised remove the nuts, lockwashers, and flat washers from the bottom ends of the shipping studs. With the pallet flat lift each end of the set, in turn, and fasten the special shock mounts to the exposed studs. The studs will accept a 1/4-20 thread.

Note: The wooden pallet can serve as a temporary fixture for supporting the set and protecting the studs until the special shock mounts are attached.

B. Normal Mounting

2.05 Remove the cover to gain access to the upper ends of the shipping studs. Remove the four nuts and lockwashers. With the

wooden pallet raised remove the nuts, lockwashers, and flat washers from the bottom ends of the shipping studs.

Note: There are four sets of nuts, lockwashers, and flat washers to remove from the RO Set, and five sets from the KSR Set.

With the pallet flat lift each end of the set, in turn, to unscrew the shipping studs from the base pan. The set, when placed on a table or any other flat surface will rest on the rubber bumpers inserted in the bottom pan.

SPEED INDICATOR PLATE

2.06 In certain cases, the speed indicator plate has not been installed on the cover. When applicable, the plate has been put in a bag

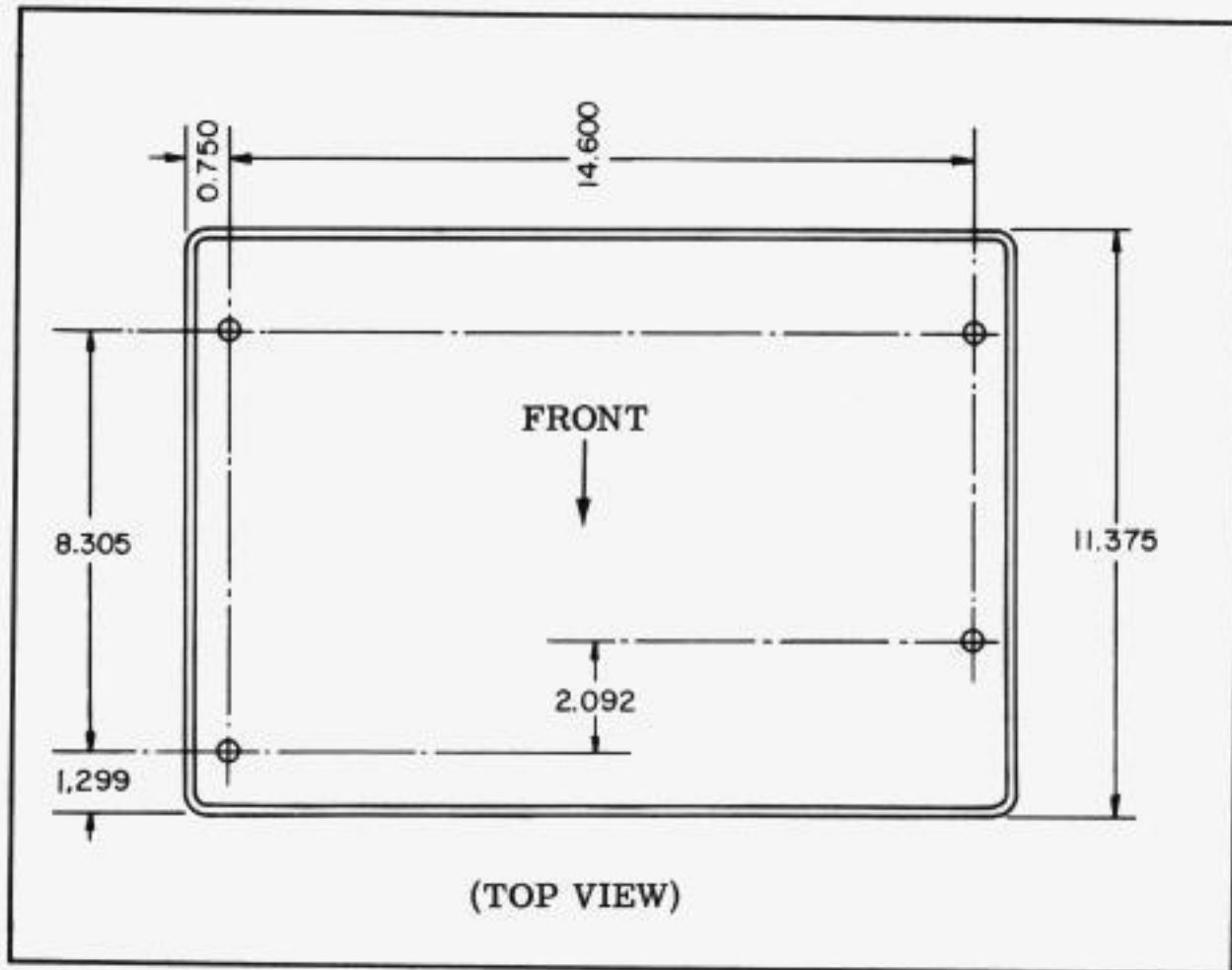


Figure 2 - Location of Shipping Studs for Deck Mounting the RO Set

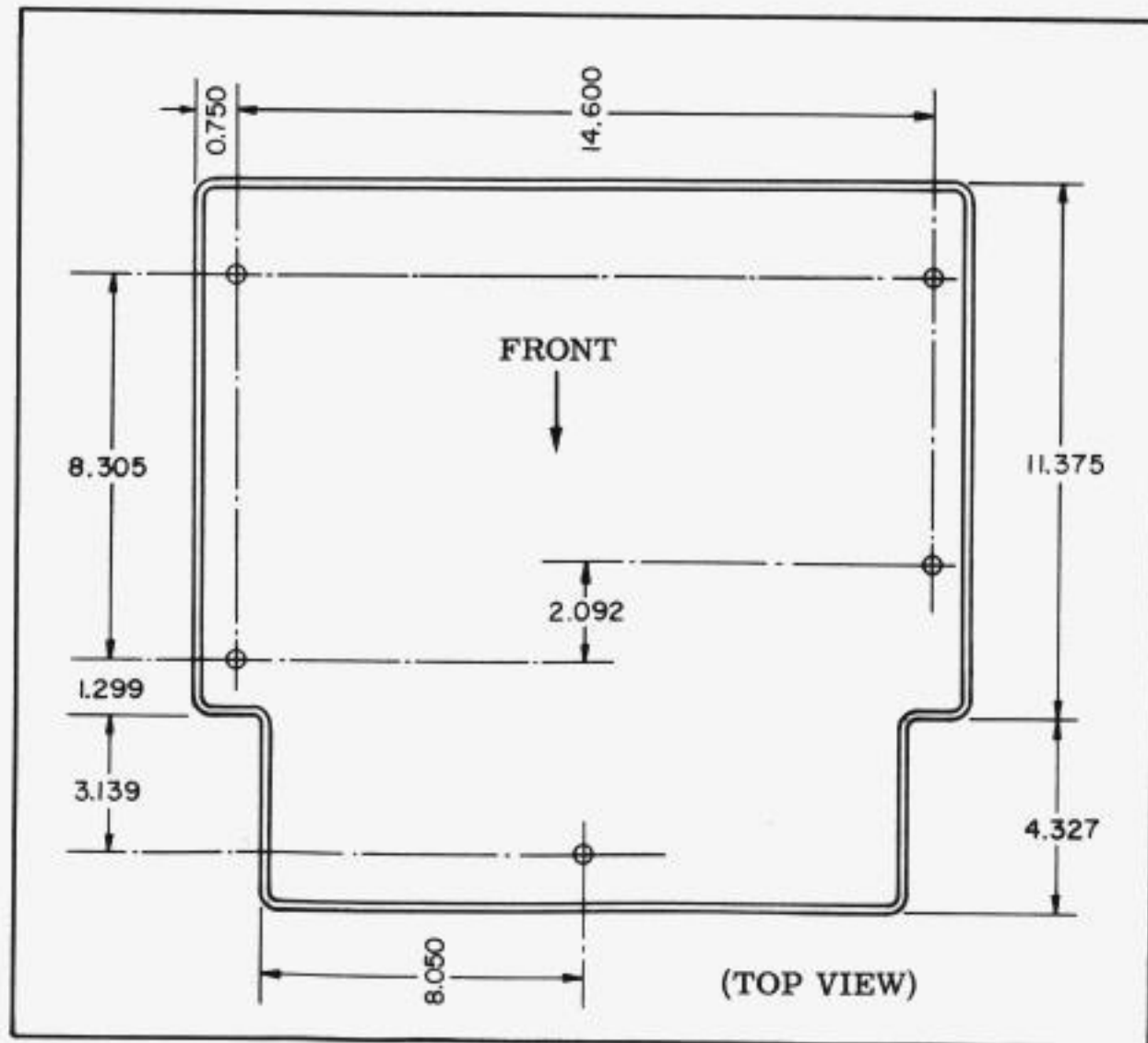


Figure 3 - Location of Shipping Studs for Deck Mounting the KSR Set

tied to the base or keyboard, and should be attached as indicated in Figure 4.

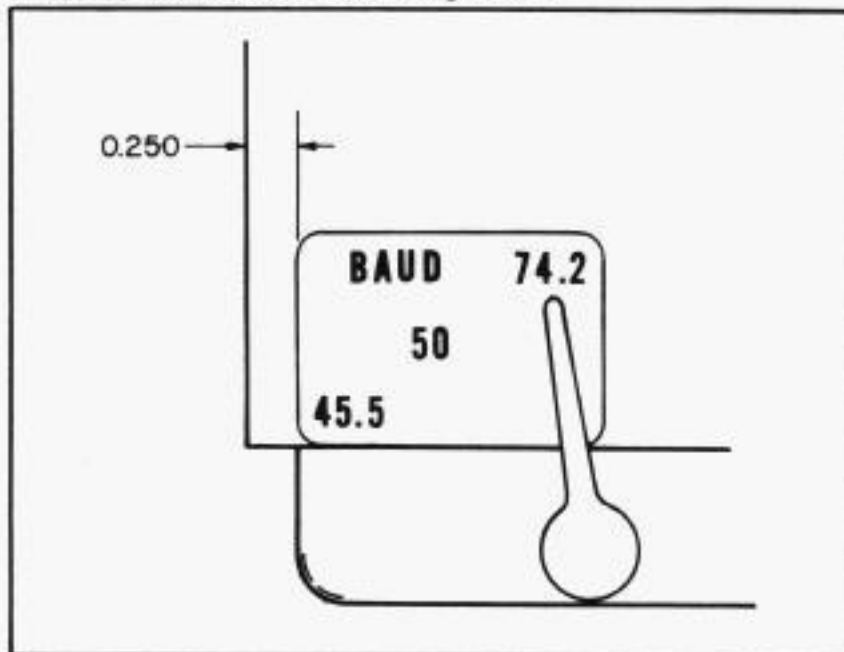


Figure 4 - Speed Indicator Plate

ENABLING THE TIME DELAY MECHANISM

2.07 If the KSR or RO Set is equipped with a time delay mechanism, the upstop bracket must be raised before the mechanism will function properly. The instructions for engaging the cam follower lever on the time delay mechanism with the cam on the typing unit are given in Figure 5.

ELECTRICAL CONNECTIONS

2.08 The internal power, signal line, and time delay (if so equipped) wires are terminated at terminal blocks in the rear of the set. When making external electrical connections, refer to the appropriate actual wiring diagram included with the set.

Note: The ground wire (green) for the power cord should be attached to the mounting bracket which supports the terminal blocks. A grounding screw has been provided for this purpose.

PAPER AND RIBBON

2.09 To Insert Paper: Insert the spindle (supplied with the typing unit) in a roll of paper, and mount it in the spindle retainers so that the paper unwinds from underneath. Route the paper over the straightener shaft, under the platen, between the paper fingers, and through the opening between the window door and dome.

2.10 To Thread Ribbon: Remove both spools from the ribbon spool shafts. Engage the hook on the end of the new ribbon, in the hub of the new spool. Wind a few turns of ribbon onto the empty spool in the same direction that it

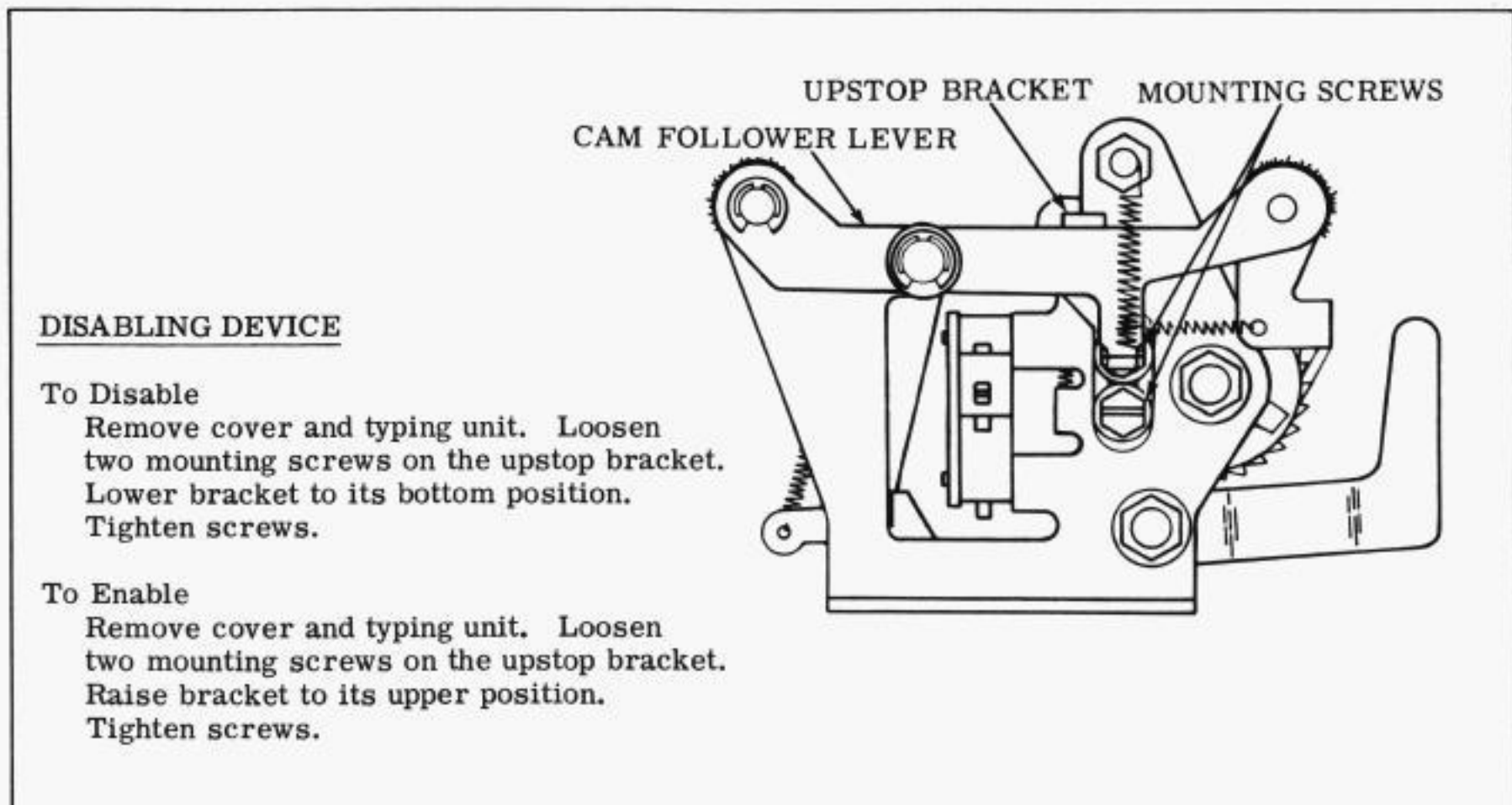


Figure 5 - Enabling the Time Delay Mechanism

DISABLING DEVICE

To Disable

Remove cover and typing unit. Loosen two mounting screws on the upstop bracket. Lower bracket to its bottom position. Tighten screws.

To Enable

Remove cover and typing unit. Loosen two mounting screws on the upstop bracket. Raise bracket to its upper position. Tighten screws.

comes off the full spool. Make sure that the reversing eyelet has been wound up on the empty spool. Place the spools on the spool shafts so that the ribbon on the right spool unwinds from the right side and the ribbon on the left spool unwinds from the left side without twisting. Thread the ribbon around and through the reverse lever slots. See Figure 6.

3. OPERATING TESTS

3.01 Several tests to check the operation of the KSR Set are listed below. The tests with asterisks (*) apply to both the KSR and RO Sets.

(a) Type several lines of a sentence such as "The quick brown fox, etc" and check for accuracy.

* (b) The local line feed key (LOC LF), when depressed, should cause the paper to advance.

Note: For the KSR Set, the local line feed key, when depressed, should cause the

paper to advance approximately three times faster than when the single line feed key is operated repeatedly.

(c) The repeat key (RPT) when depressed together with any other key (except local function keys) should cause repeated transmission of the character or function.

* (d) The local carriage return key (LOC CR), when depressed, should cause the typebox carriage to return to the left margin.

(e) The FIGS key, when operated, should condition the machine for typing upper case characters; and the LTRS key, when operated, should condition the machine for typing lower case characters.

(f) With the typebox in figures position, the bell should ring clearly on single or repeated operations of the BELL key.

* (g) The typing unit should run "open" when the BREAK key is depressed.

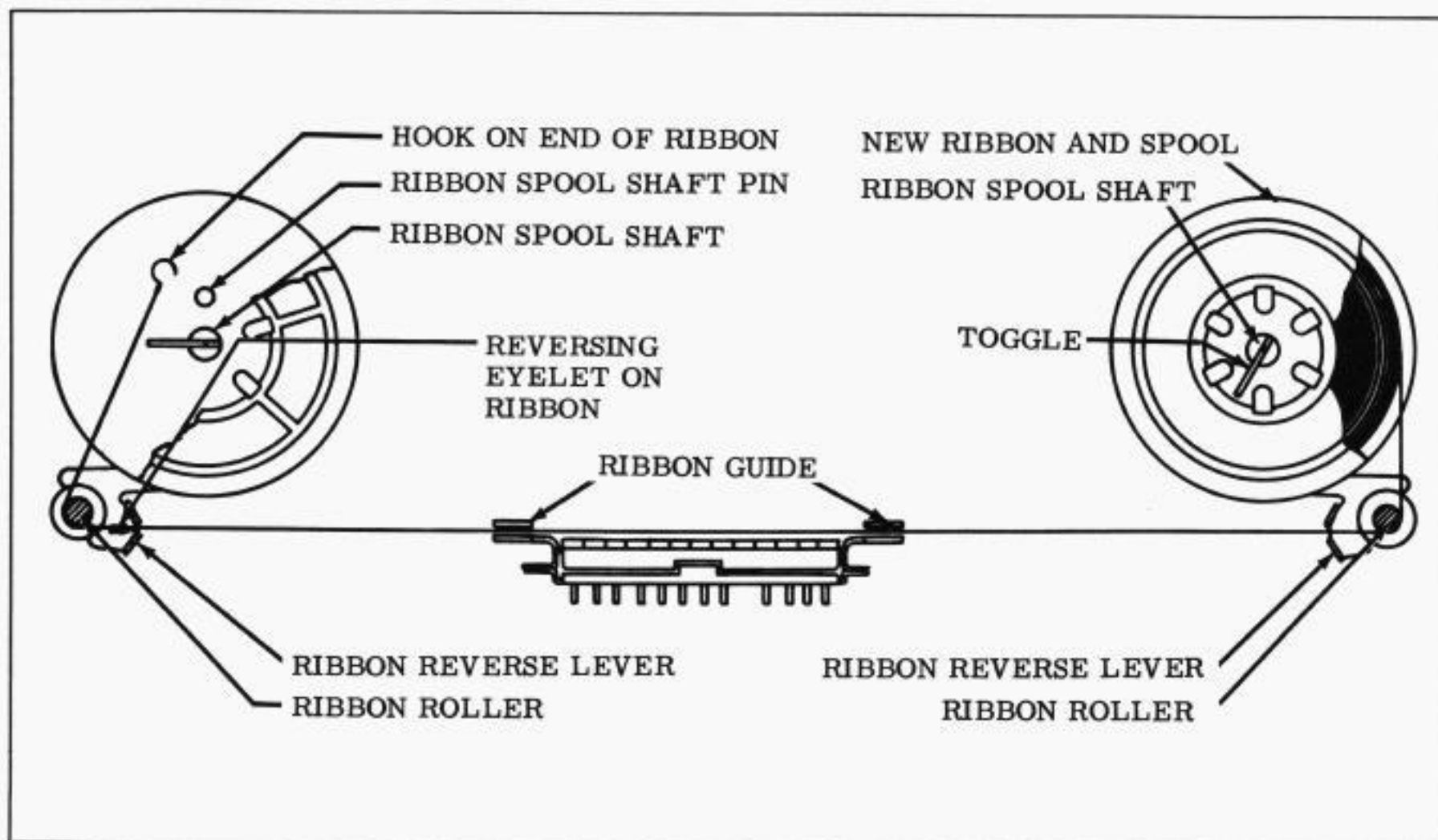


Figure 6 - Path of Ribbon