

CSB. 6/29/39

Bulletin No. 1032

Issue 3

June, 1939

TELETYPE

PRINTING TELEGRAPH SYSTEMS

PARTS

TABLES & MOTOR GENERATORS

(MODEL 12)

TELETYPE

CORPORATION

SUBSIDIARY OF

Western Electric Company

CHICAGO, U.S.A.

Bulletin No. 1032

Issue 3

June, 1939

TELETYPE

PRINTING TELEGRAPH SYSTEMS

PARTS

TABLES & MOTOR GENERATORS

(MODEL 12)

BELL SYSTEM NOTE:

When ordering parts from this Bulletin, each number should be followed by the letter B without parentheses, in order to indicate that they are to be secured from the Bell Telephone Corporation.

TELETYPE

CORPORATION

SUBSIDIARY OF

Western Electric Company

CHICAGO, U.S.A.

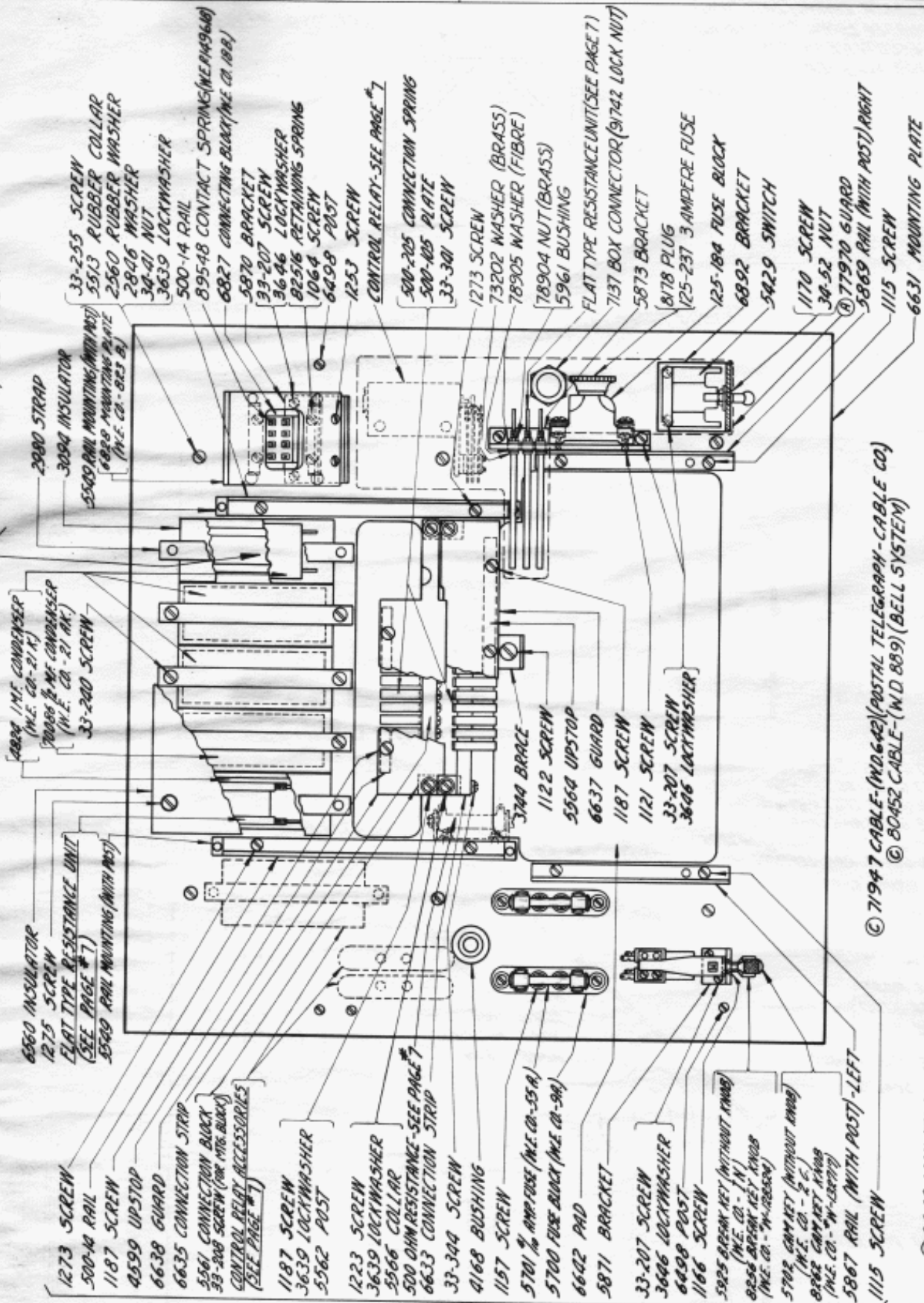
Printed in U.S.A.

ALPHABETICAL INDEX

	<u>Page</u>
Accessories for Motor-Generator Sets	6
Bases	4,5,6
Blocks (Connecting & Fuse)	1,7
Cables	1
Cam Key	1
Cam Key Stop	3
Condensers	1,7
Connecting Blocks	1
Control Relay (Assem.)	1,7
Copyholder	2,3
Cords	4,5
Covers	2,3
Cover Pads	2
Crank Handle	2
Felt Pads	2
Frames - Table	2,3
Fuses	1,6,7
Generators	4,5,6
Guards	1,4,5
Keys - Cam and Break	1
Message Line Guide (Assem.)	3
Motors	4,5,6
Motor - Generator Accessories	6
Motor - Generator Sets	4,5,6
Mounting Plate	1
Notes of Explanation	8
Numerical Index	8
Pads	1,2
Plugs	4,5,6
Receptacles	4,5,6
Relay - Control	1,7
Relay Connecting Block	1
Resistance Units (Flat and Round Types)	1,7
Set of Accessories	6
Switch	1
Table Frame (Assem.)	2,3

This document is the property of the U.S. Government and is loaned to you in order to be secured.

FOR MOUNTING OF 500 OHM ROUND TYPE
RESISTANCE UNIT, SEE PAGE 7.



4284 1 MF CONDENSER
(I.N.E. CO.-21K)
70066 1/2 MF CONDENSER
(I.N.E. CO.-21 AK)
33-200 SCREW

6860 INSULATOR
1275 SCREW
FLAT TYPE RESISTANCE UNIT
(SEE PAGE #7)
5549 RAIL MOUNTING (WITH POST)

1273 SCREW
500-14 RAIL
1187 SCREW
4599 UPSTOP
6638 GUARD
6635 CONNECTION STRIP
5561 CONNECTION BLOCK
33-208 SCREW (FOR MTR. BLOCK)
CONTROL RELAY ACCESSORIES
(SEE PAGE #7)
1187 SCREW
3639 LOCKWASHER
5262 POST
1223 SCREW
3639 LOCKWASHER
5266 COLLAR
500 OHM RESISTANCE-SEE PAGE 7
6633 CONNECTION STRIP
33-344 SCREW
4168 BUSHING
1187 SCREW
5701 1/2 AMP FUSE (I.N.E. CO.-55A)
5700 FUSE BLOCK (I.N.E. CO.-9A)
6642 PAD
5871 BRACKET
33-207 SCREW
3606 LOCKWASHER
6498 POST
1166 SCREW
5825 GREEN KEY (WITHOUT KNOB)
(I.N.E. CO.-1N)
8256 RED KEY (WITH KNOB)
(I.N.E. CO.-1N-2825A)
5702 GRAY KEY (WITHOUT KNOB)
(I.N.E. CO.-2C)
8262 GRAY KEY (WITH KNOB)
(I.N.E. CO.-1N-2827D)
5867 RAIL (WITH POST)-LEFT
1115 SCREW

2980 STRAP
3094 INSULATOR
5509 RAIL MOUNTING (WITH POST)
6828 MOUNTING PLATE
(I.N.E. CO.-823 B)
33-255 SCREW
5513 RUBBER COLLAR
2560 RUBBER WASHER
2806 WASHER
34-21 NUT
3639 LOCKWASHER
500-14 RAIL
89548 CONTACT SPRINGS (I.N.E. CO. 948)
6827 CONNECTING BLOCK (I.N.E. CO. 188)
5870 BRACKET
33-207 SCREW
3646 LOCKWASHER
82576 RETAINING SPRING
1064 SCREW
6498 POST
1253 SCREW
CONTROL RELAY-SEE PAGE 7

500-205 CONNECTION SPRING
500-105 PLATE
33-301 SCREW
1273 SCREW
73202 WASHER (BRASS)
78905 WASHER (FIBRE)
78904 NUT (BRASS)
5961 BUSHING
FLAT TYPE RESISTANCE UNIT (SEE PAGE 7)
7137 BOX CONNECTOR (91742 LOCK NUT)
5873 BRACKET
8178 PLUG
125-237 3 AMPERE FUSE
125-184 FUSE BLOCK
6892 BRACKET
5429 SWITCH
1170 SCREW
34-52 NUT
77970 GUARD
5869 RAIL (WITH POST) RIGHT
1115 SCREW
6631 MOUNTING PLATE

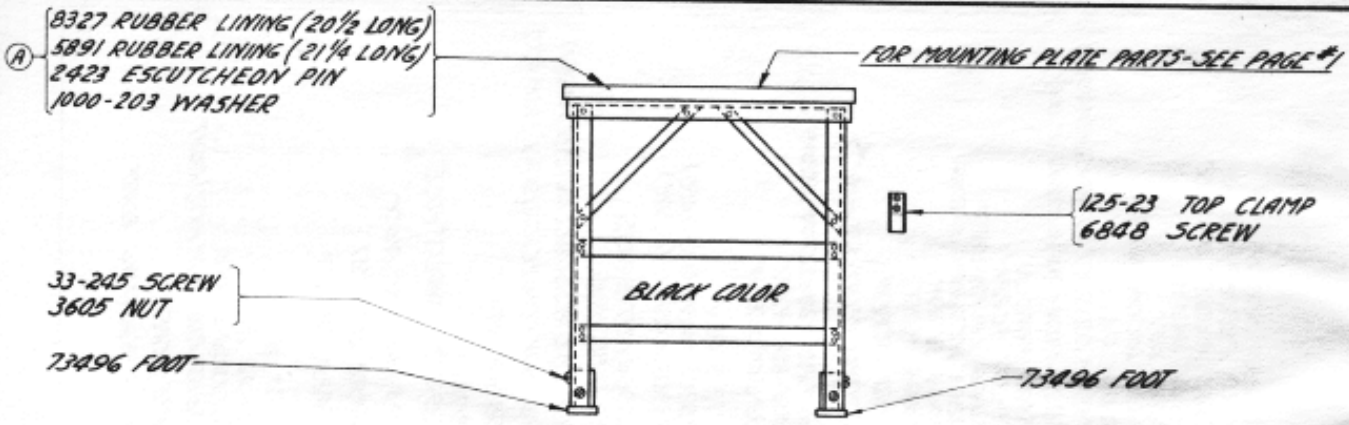
3744 BRACE
1122 SCREW
5264 UPSTOP
6637 GUARD
1187 SCREW
1121 SCREW
33-207 SCREW
3606 LOCKWASHER

© 71947 CABLE (NO. 642) (POSTAL TELEGRAPH-CABLE CO.)
© 80452 CABLE-(W.D. 889) (BELL SYSTEM)

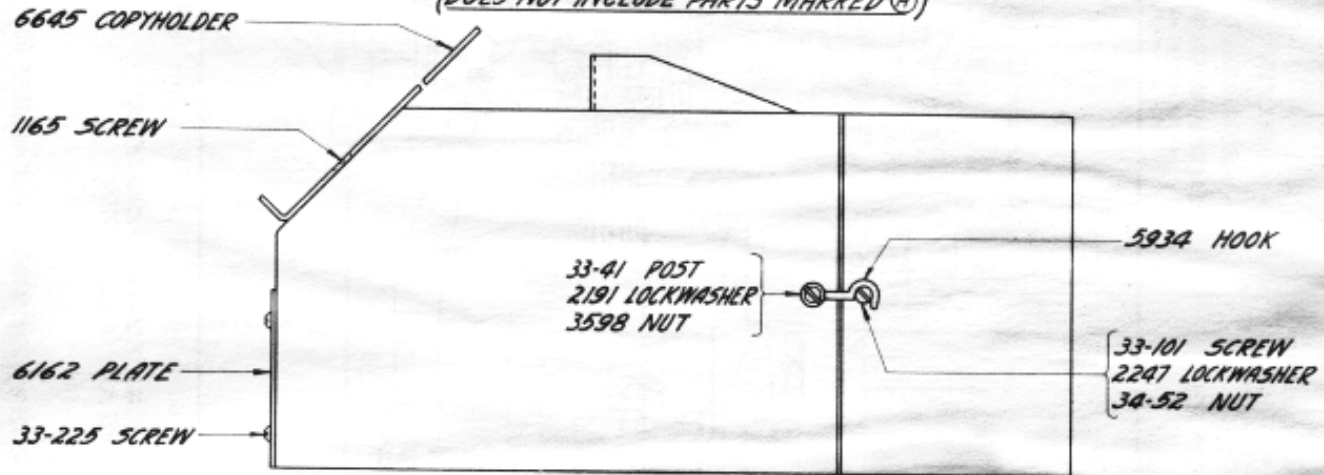
© 6642 MOUNTING PLATE PAD

© 6630 MOUNTING PLATE (ASSEM) (EXCLUDES PARTS MARKED ©)

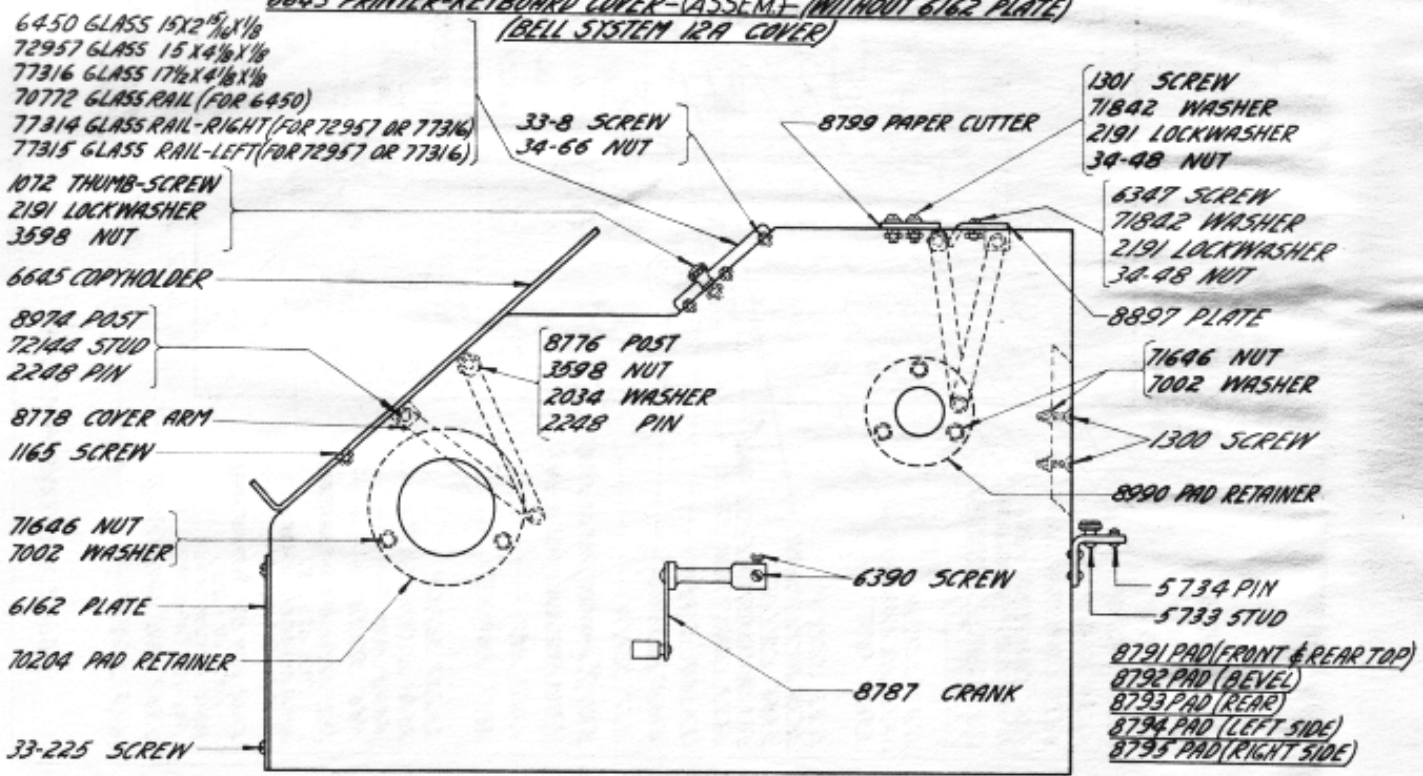
(A) (B) SEE PAGE 8 FOR EXPLANATION



73494 TABLE FRAME (ASSEM.) - (WITH FEET AND CLAMPS)
(BELL SYSTEM 12A PRINTER STAND)
(DOES NOT INCLUDE PARTS MARKED ①)

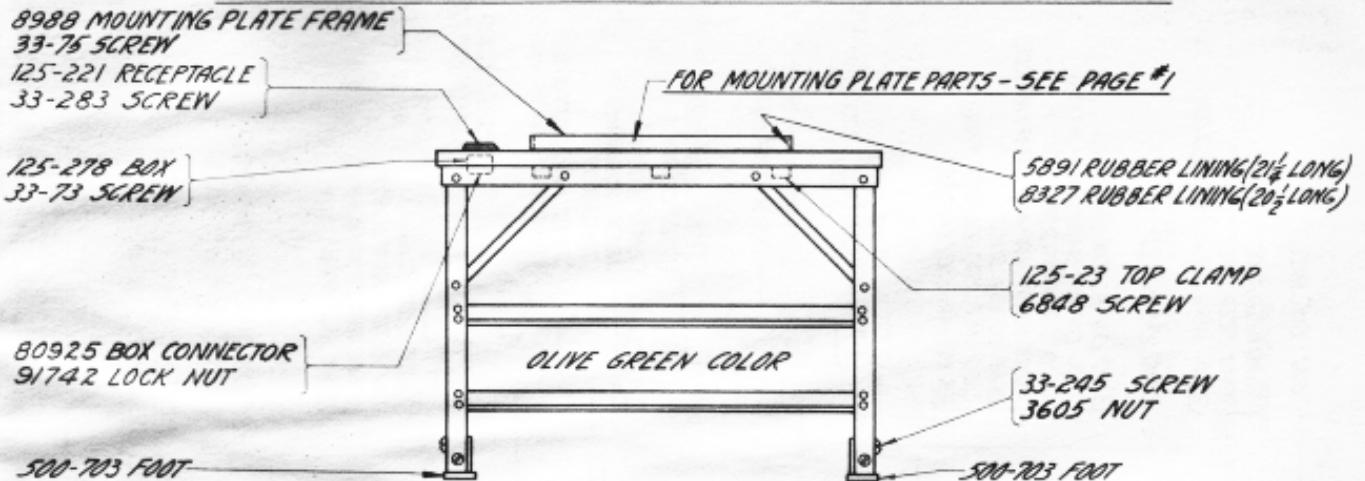


6643 PRINTER-KEYBOARD COVER - (ASSEM.) - (WITHOUT 6162 PLATE)
(BELL SYSTEM 12A COVER)

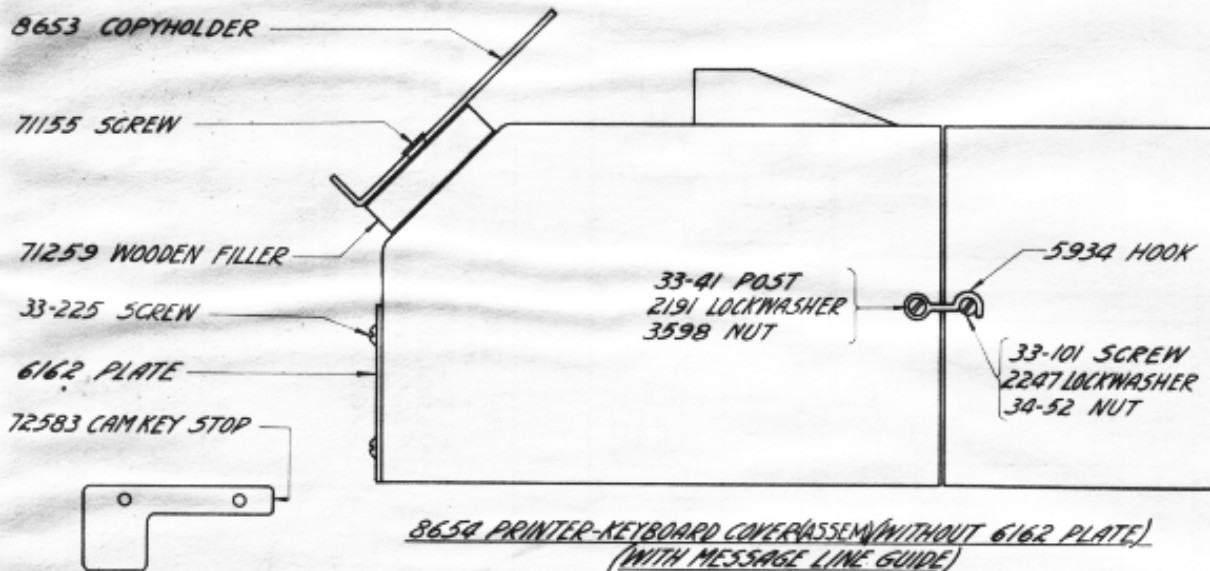


8894 PRINTER-KEYBOARD COVER - (ASSEM.) - (WITH CRANK) (WITHOUT 6162 PLATE)
BELL SYSTEM 12S COVER (ALSO USED BY POSTAL TELEGRAPH-CABLE CO.)

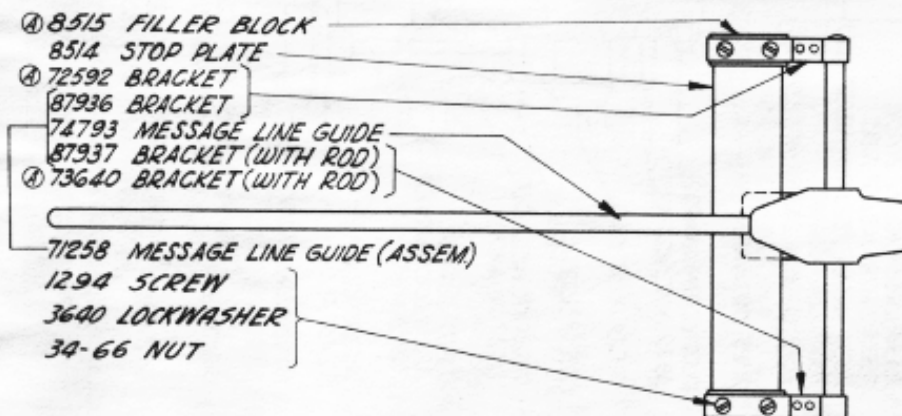
ALL PARTS SHOWN ON THIS PAGE ARE FOR POSTAL TELEGRAPH-CABLE CO., ONLY.



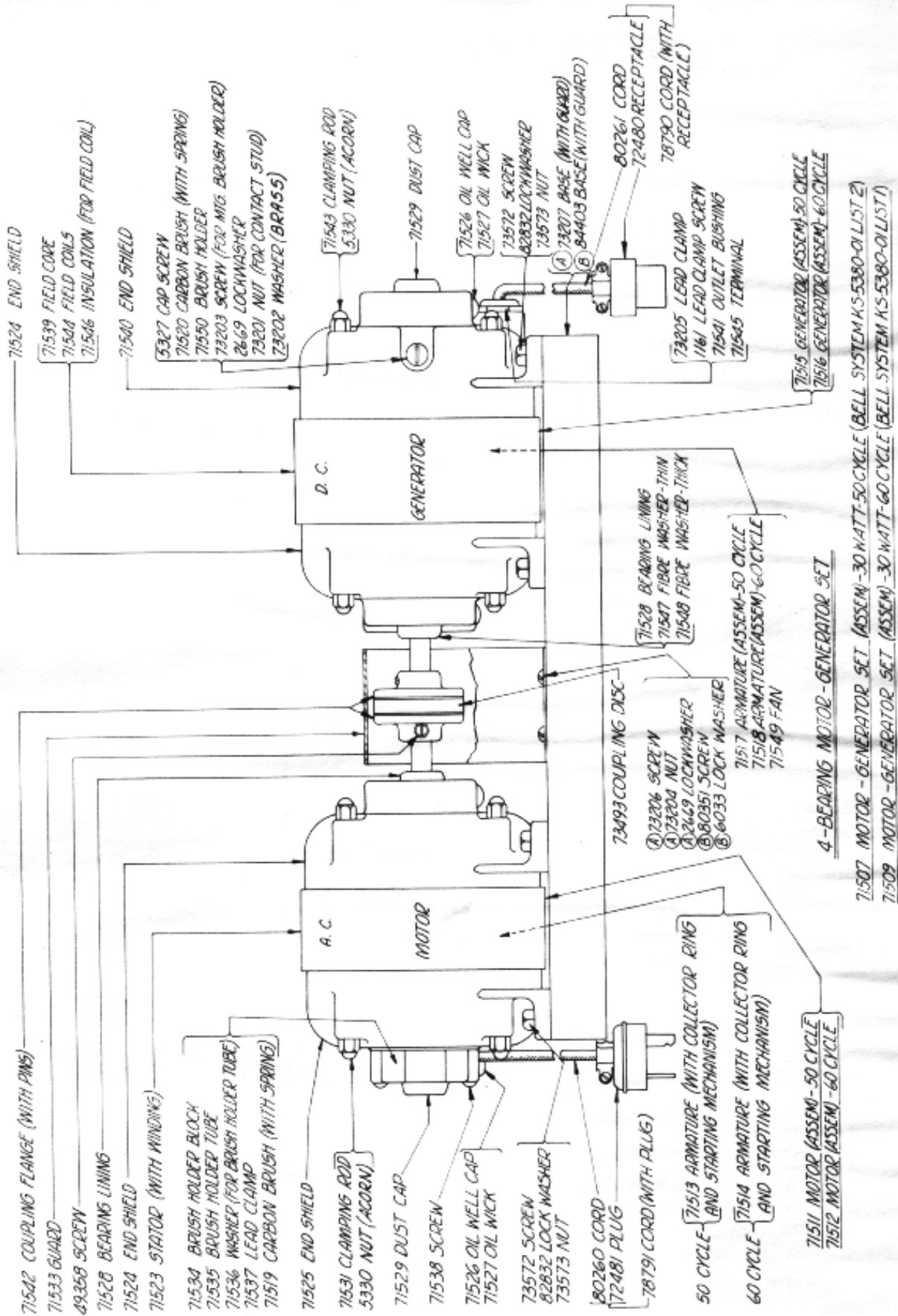
XRT-28 TABLE (ASSEM)



8654 PRINTER-KEYBOARD COVER (ASSEM) (WITHOUT 6162 PLATE)
(WITH MESSAGE LINE GUIDE)



Ⓐ PARTS MARKED Ⓐ ARE OLD STYLE PARTS, FURNISHED FOR MAINTENANCE ONLY. WHEN MESSAGE LINE GUIDE (ASSEM) 71258 IS ORDERED, ONLY NEW STYLE PARTS WILL BE FURNISHED.



- 71524 END SHIELD
- 71539 FIELD CORE
- 71544 FIELD COILS
- 71546 INSULATION (FOR FIELD COIL)
- 71540 END SHIELD
- 5327 CAP SCREW
- 71520 CARBON BRUSH (WITH SPRING)
- 71550 BRUSH HOLDER
- 73203 SCREW (FOR MFG. BRUSH HOLDER)
- 2869 LOCKWASHER
- 73201 NUT (FOR CONTACT STUD)
- 73202 WASHER (BRASS)

- 71543 CLAMPING ROD
- 5330 NUT (ACORN)
- 71529 DUST CAP
- 71526 OIL WELL CAP
- 71527 OIL WICK
- 73572 SCREW
- 82832 LOCKWASHER
- 73573 NUT
- 73207 BASE (WITH GUARD)
- 84403 BASE (WITH GUARD)

- 80260 CORD
- 72481 PLUG
- 78791 CORD (WITH PLUG)
- 71513 ARMATURE (WITH COLLECTOR RING AND STARTING MECHANISM)
- 71514 ARMATURE (WITH COLLECTOR RING AND STARTING MECHANISM)
- 71511 MOTOR (ASSEM) - 50 CYCLE
- 71512 MOTOR (ASSEM) - 60 CYCLE

- 71525 END SHIELD
- 71531 CLAMPING ROD
- 5330 NUT (ACORN)
- 71529 DUST CAP
- 71538 SCREW
- 71526 OIL WELL CAP
- 71527 OIL WICK
- 73572 SCREW
- 82832 LOCK WASHER
- 73573 NUT
- 73493 COUPLING DISC
- 71528 BEARING LINING
- 71547 FIBRE WASHER - THIN
- 71548 FIBRE WASHER - THICK
- 71517 ARMATURE (ASSEM) - 50 CYCLE
- 71518 ARMATURE (ASSEM) - 60 CYCLE
- 71549 FAN

- 71542 COUPLING FLANGE (WITH PINS)
- 71533 GUARD
- 49358 SCREW
- 71528 BEARING LINING
- 71524 END SHIELD
- 71523 STATOR (WITH WINDING)
- 71534 BRUSH HOLDER BLOCK
- 71535 BRUSH HOLDER TUBE
- 71536 WASHER (FOR BRUSH HOLDER TUBE)
- 71537 LEAD CLAMP
- 71519 CARBON BRUSH (WITH SPRING)

- 73205 LEAD CLAMP
- 1161 LEAD CLAMP SCREW
- 71541 OUTLET BUSHING
- 71545 TERMINAL
- 71515 GENERATOR (ASSEM) - 50 CYCLE
- 71516 GENERATOR (ASSEM) - 60 CYCLE

- 71528 BEARING LINING
- 71547 FIBRE WASHER - THIN
- 71548 FIBRE WASHER - THICK
- 73493 COUPLING DISC
- 71517 ARMATURE (ASSEM) - 50 CYCLE
- 71518 ARMATURE (ASSEM) - 60 CYCLE
- 71549 FAN

- 73493 COUPLING DISC
- 71528 BEARING LINING
- 71547 FIBRE WASHER - THIN
- 71548 FIBRE WASHER - THICK
- 71517 ARMATURE (ASSEM) - 50 CYCLE
- 71518 ARMATURE (ASSEM) - 60 CYCLE
- 71549 FAN

- 71517 ARMATURE (ASSEM) - 50 CYCLE
- 71518 ARMATURE (ASSEM) - 60 CYCLE
- 71549 FAN
- 71511 MOTOR (ASSEM) - 50 CYCLE
- 71512 MOTOR (ASSEM) - 60 CYCLE

- 71511 MOTOR (ASSEM) - 50 CYCLE
- 71512 MOTOR (ASSEM) - 60 CYCLE
- 71507 MOTOR - GENERATOR SET (ASSEM) - 30 WATT - 50 CYCLE (BELL SYSTEM KS-5380-OILIST 2)
- 71509 MOTOR - GENERATOR SET (ASSEM) - 30 WATT - 60 CYCLE (BELL SYSTEM KS-5380-OILIST 1)

- 71515 GENERATOR (ASSEM) - 50 CYCLE
- 71516 GENERATOR (ASSEM) - 60 CYCLE
- 71507 MOTOR - GENERATOR SET (ASSEM) - 30 WATT - 50 CYCLE (BELL SYSTEM KS-5380-OILIST 2)
- 71509 MOTOR - GENERATOR SET (ASSEM) - 30 WATT - 60 CYCLE (BELL SYSTEM KS-5380-OILIST 1)

- 71507 MOTOR - GENERATOR SET (ASSEM) - 30 WATT - 50 CYCLE (BELL SYSTEM KS-5380-OILIST 2)
- 71509 MOTOR - GENERATOR SET (ASSEM) - 30 WATT - 60 CYCLE (BELL SYSTEM KS-5380-OILIST 1)
- 71508 MOTOR - GENERATOR SET (ASSEM) (WITH ACCESSORIES) - 50 CYCLE
- 71510 MOTOR - GENERATOR SET (ASSEM) (WITH ACCESSORIES) - 60 CYCLE

- 71508 MOTOR - GENERATOR SET (ASSEM) (WITH ACCESSORIES) - 50 CYCLE
- 71510 MOTOR - GENERATOR SET (ASSEM) (WITH ACCESSORIES) - 60 CYCLE
- 71511 MOTOR (ASSEM) - 50 CYCLE
- 71512 MOTOR (ASSEM) - 60 CYCLE

- 71511 MOTOR (ASSEM) - 50 CYCLE
- 71512 MOTOR (ASSEM) - 60 CYCLE
- 71511 MOTOR (ASSEM) - 50 CYCLE
- 71512 MOTOR (ASSEM) - 60 CYCLE

- 71511 MOTOR (ASSEM) - 50 CYCLE
- 71512 MOTOR (ASSEM) - 60 CYCLE
- 71511 MOTOR (ASSEM) - 50 CYCLE
- 71512 MOTOR (ASSEM) - 60 CYCLE

71511 MOTOR (ASSEM) - 50 CYCLE
71512 MOTOR (ASSEM) - 60 CYCLE

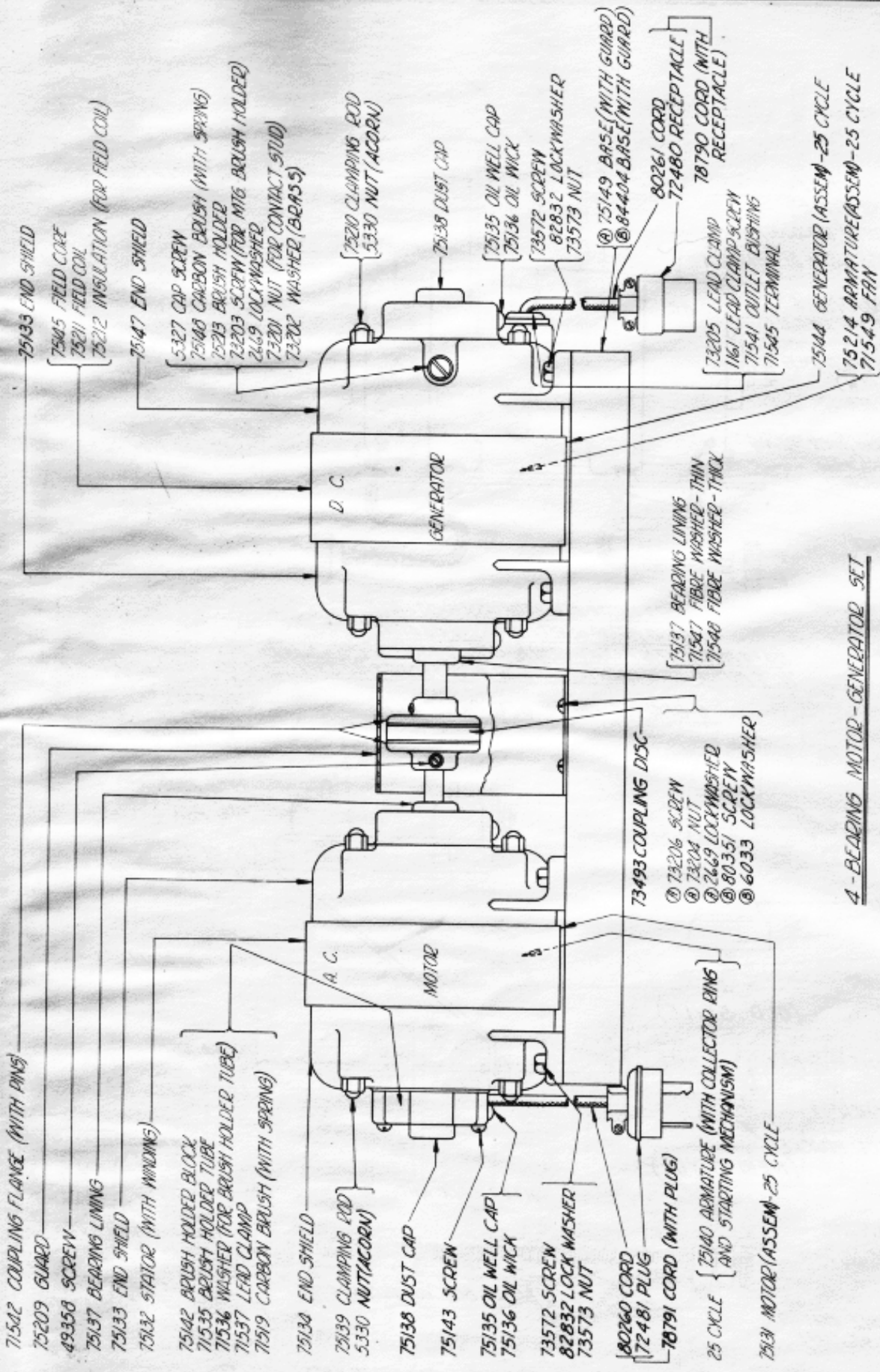
71511 MOTOR (ASSEM) - 50 CYCLE
71512 MOTOR (ASSEM) - 60 CYCLE

71511 MOTOR (ASSEM) - 50 CYCLE
71512 MOTOR (ASSEM) - 60 CYCLE

71511 MOTOR (ASSEM) - 50 CYCLE
71512 MOTOR (ASSEM) - 60 CYCLE

71511 MOTOR (ASSEM) - 50 CYCLE
71512 MOTOR (ASSEM) - 60 CYCLE

PARTS MARKED (A) ARE USED WITH 73207 BASE - WITH BODY HOLES FOR MOUNTING THE GUARD.
PARTS MARKED (B) ARE USED WITH 84403 BASE - WITH TAPPED HOLES FOR MOUNTING THE GUARD.



- 71542 COUPLING FLANGE (WITH PINS)
- 75209 GUARD
- 49358 SCREW
- 75137 BEARING LINING
- 75133 END SHIELD
- 75132 STATOR (WITH WINDING)
- 75142 BRUSH HOLDER BLOCK
- 71535 BRUSH HOLDER TUBE
- 71536 WASHER (FOR BRUSH HOLDER TUBE)
- 71537 LEAD CLAMP
- 71519 CARBON BRUSH (WITH SPRING)
- 75134 END SHIELD
- 75139 CLAMPING ROD
- 5330 NUT (ACORN)
- 75138 DUST CAP
- 75143 SCREW
- 75135 OIL WELL CAP
- 75136 OIL WICK
- 73572 SCREW
- 82832 LOCK WASHER
- 73573 NUT
- 80260 CORD
- 72481 PLUG
- 78791 CORD (WITH PLUG)
- 25 CYCLE { 75140 ARMATURE (WITH COLLECTOR RING AND STARTING MECHANISM)
- 75131 MOTOR (ASSEM-25 CYCLE
- 75135 OIL WELL CAP
- 75136 OIL WICK
- 73572 SCREW
- 82832 LOCK WASHER
- 73573 NUT
- 75149 BASE (WITH GUARD)
- 84404 BASE (WITH GUARD)
- 80261 CORD
- 72480 RECEPTACLE
- 78790 CORD (WITH RECEPTACLE)
- 73205 LEAD CLAMP
- 71541 LEAD CLAMP SCREW
- 71541 OUTLET BUSHING
- 71545 TERMINAL
- 75144 GENERATOR (ASSEM-25 CYCLE
- 75214 ARMATURE (ASSEM)-25 CYCLE
- 71549 FRN

4-BEARING MOTOR-GENERATOR SET

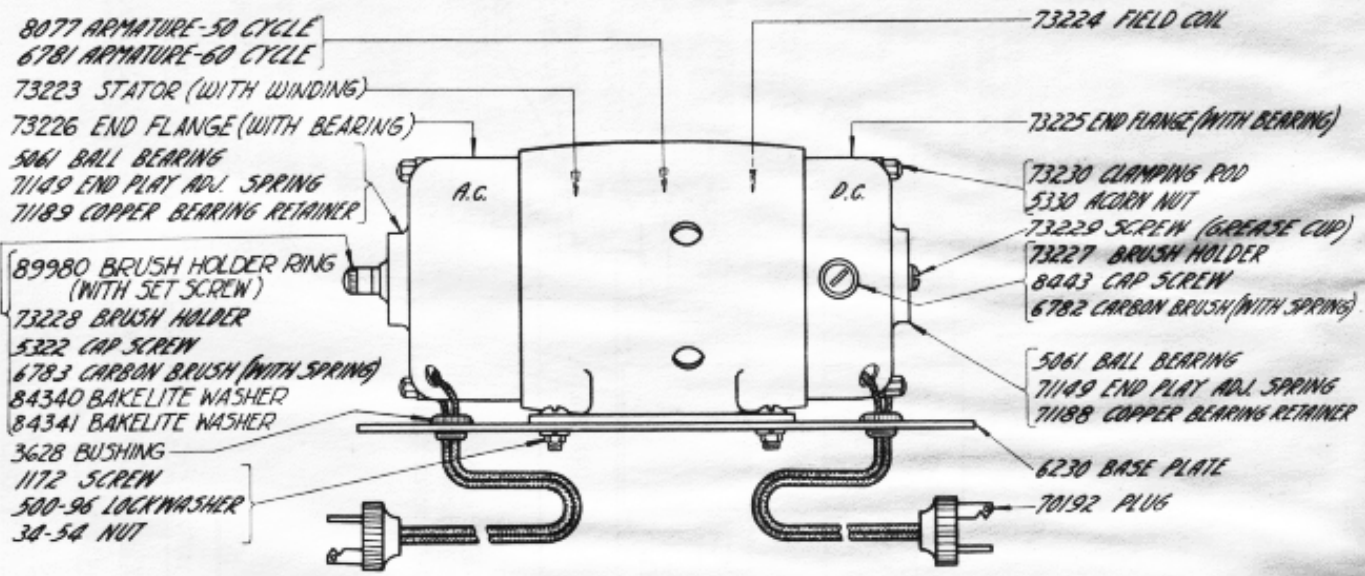
71521 MOTOR-GENERATOR SET (ASSEM-30 WATT-25 CYCLE (BELL SYSTEM KS-5380-OIL LIST 3)

(71298 SET OF ACCESSORIES FOR MOTOR-GENERATOR SETS)

71522 MOTOR-GENERATOR SET (ASSEM)(WITH ACCESSORIES)-25 CYCLE

*72198 SET OF ACCESSORIES
SEE PAGE 6

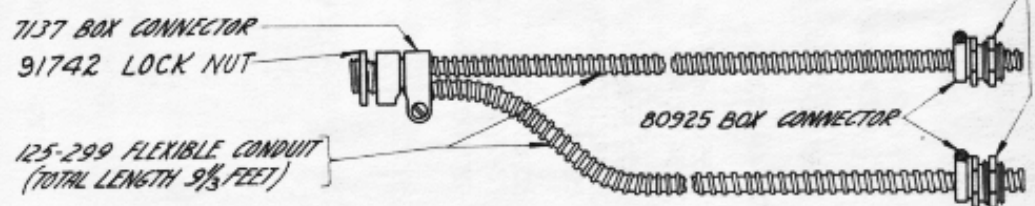
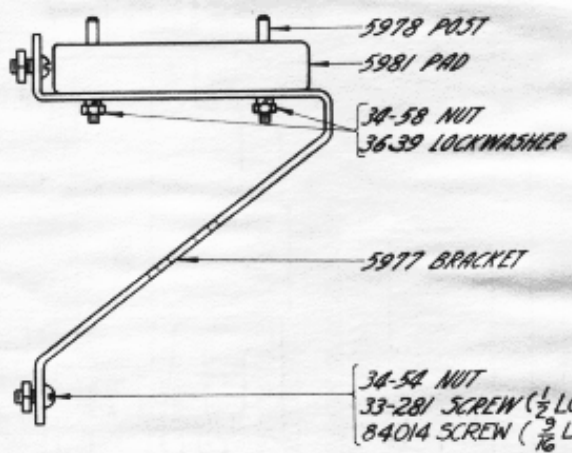
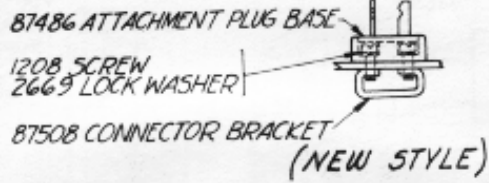
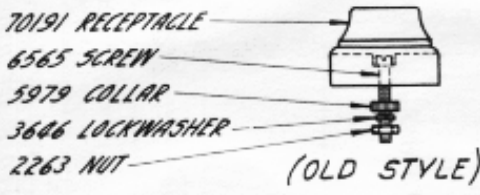
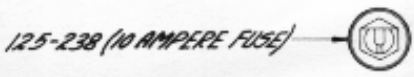
PARTS MARKED (A) ARE USED WITH 75149 BASE - WITH BODY HOLES FOR MOUNTING THE GUARD.
PARTS MARKED (B) ARE USED WITH 84404 BASE - WITH TAPPED HOLES FOR MOUNTING THE GUARD.



8433 MOTOR-GENERATOR (ASSEM)-50 CYCLE
6780 MOTOR-GENERATOR (ASSEM)-60 CYCLE
8434 MOTOR-GENERATOR (ASSEM) WITH ACCESSORIES (50 CYCLE)
7114 MOTOR-GENERATOR (ASSEM) WITH ACCESSORIES (60 CYCLE)

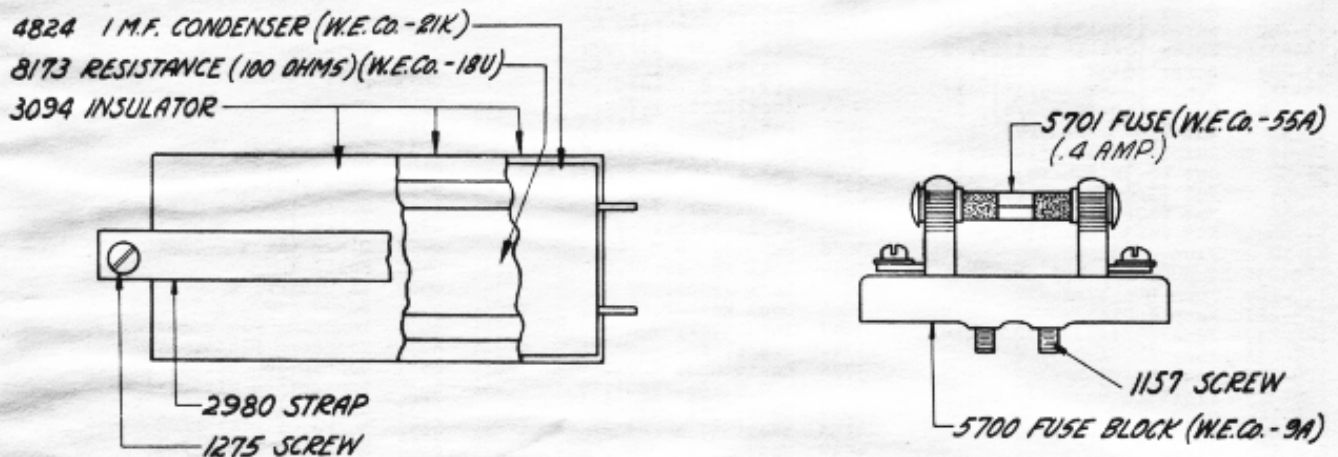
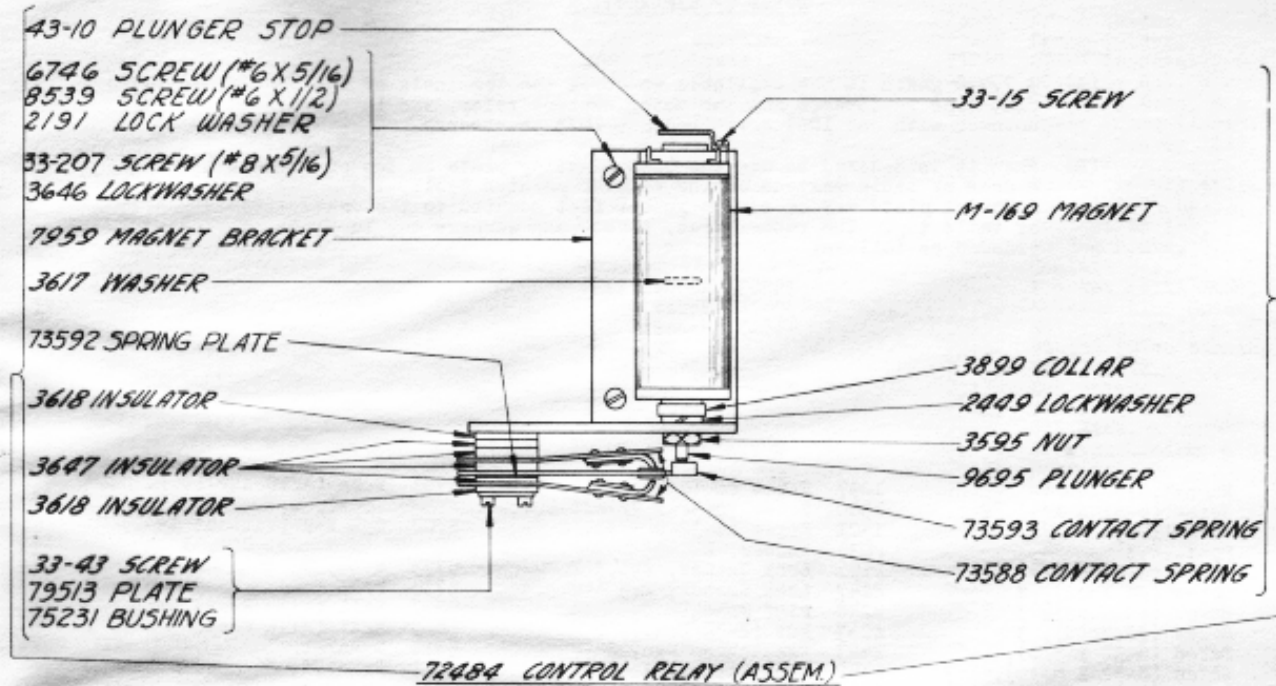
2-BEARING MOTOR GENERATOR SET

HAS BEEN SUPERSEDED BY 4-BEARING SET SHOWN ON PAGE "A & 5"
COMPLETE 2-BEARING SETS NO LONGER FURNISHED.



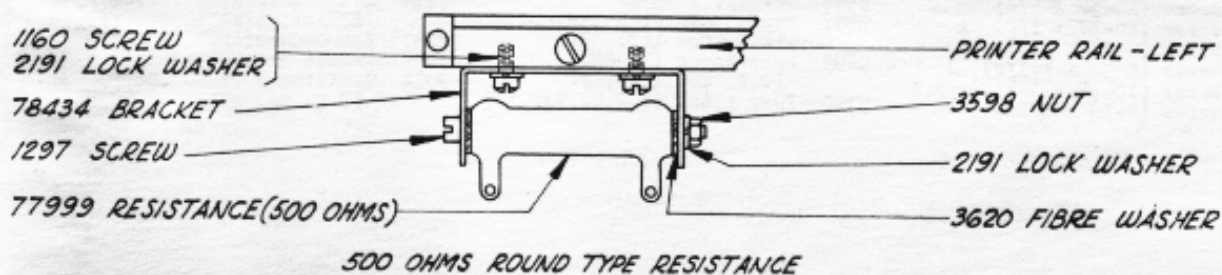
CATALOG No.	QTY.	CATALOG No.	QTY.
33-281	6	3646	2
34-58	8	5977	2
34-58	4	5978	4
125-238	2	5979	2
125-299	1	5981	2
80925	2	6565	2
91742	3	7137	1
2263	2	70191	1
3639	4	1208	2
87486	1	2669	2
87508	1	84014	2

72198 SET OF ACCESSORIES FOR MOTOR-GENERATOR SETS (CONSISTS OF)



FLAT TYPE RES. UNITS			FLAT TYPE RES. UNITS			FLAT TYPE RES. UNITS		
OHMS	CATALOG NO.	W.E.CO. NO.	OHMS	CATALOG NO.	W.E.CO. NO.	OHMS	CATALOG NO.	W.E.CO. NO.
20	3778	185	200	70416	186	1510	70415	180A
30	5699	18J	250	3043	18AM	2000	8015	18BA
80	48513	18K	300	71853	18AP	4000	70411	18FC
100	8173	18U	500	5428	18AG			
120	5697	18D	600	5426	18AE			
150	3042	18F	1000	5427	18BM			

CATALOG NO.	AMTS.
1157	4
1275	2
2980	1
3094	3
4824	1
5700	2
5701	2
8173	1
72484	1



NOTES OF EXPLANATION

Page 1

- (A) A 77970 guard is now available to cover the terminals of the flat type resistance and the motor control relay, and is mounted with one 1069 screw and one 1073 thumbscrew.
- (B) When it is desired to use the 6630 mounting plate on top of a desk or table instead of the regular printer table, the mounting plate may be set on rubber feet mounted to the desk or table top. The rubber feet, screws and washers may be ordered as follows:

35503 Rubber Foot
33-72 Screw
41663 Washer

NUMERICAL INDEX

M-169	Magnet	7	1297	Screw (6-40 Special), 7	5701	Fuse (4/10 AMP)(W.E. Co. 55A), 1,7
33-8	Screw (4-36 x 1/4), 2	1300	Screw (6-32 x 7/16), 2	5702	Cam Key (Without Knob) (W.E. Co. 2C), 1	
33-15	Screw (2-56 x 1/8), 7	1301	Screw (6-32 x 3/8), 2	5733	Stud, 2	
33-41	Post, 2,3	2034	Washer, 2	5734	Pin, 2	
33-43	Screw (2-56 x 3/4), 7	2191	Lock Washer, 2,3,7	5867	Rail (With Post) Left, 1	
33-72	Screw (#8 Wood), 8	2247	Lock Washer, 2,3	5869	Rail (With Post) Right, 1	
33-73	Screw (#6 Wood), 3	2248	Pin, 2	5870	Bracket, 1	
33-75	Screw (#8 Wood), 3	2263	Nut (8-32 Hex.), 6	5871	Bracket, 1	
33-101	Screw (6-32 x 3/8), 2,3	2423	Escutcheon Pin, 2	5873	Bracket, 1	
33-207	Screw (8-32 x 5/16), 1,7	2449	Lock Washer, 7	5891	Rubber Lining (21-1/4 Long), 2,3	
33-208	Screw (10-32 x 1/2), 1	2560	Rubber Washer, 1	5925	Break Key (Without Knob) (W.E. Co. 1N), 1	
33-225	Screw (6-32 x 3/16), 2,3	2669	Lock Washer, 4,5,6	5934	Hook, 2,3	
33-240	Screw (10-32 x 1-1/4), 1	2846	Washer, 1	5961	Bushing, 1	
33-245	Screw (5/16-18 x 1), 2,3	2980	Strap, 1,7	5977	Bracket, 6	
33-255	Screw (10-32 x 2), 1	3042	Resistance (150 OHM) (W.E. Co. 18F), 7	5978	Post, 6	
33-281	Screw (1/4-18 x 1/2), 6	3043	Resistance (250 OHM) (W.E. Co. 18AM), 7	5979	Collar, 6	
33-283	Screw (6-32 x 5/16), 3	3094	Insulator, 1,7	5981	Pad, 6	
33-341	Screw (6-32 x 9/16), 1	3595	Nut (1/4-32 Hex.), 7	6033	Lock Washer, 4,5	
33-344	Screw (10-32 x 3/4), 1	3598	Nut (6-40 Hex.), 2,3,7	6162	Plate, 2,3	
34-41	Nut (10-32 Square), 1	3605	Nut (5/16-18 Hex.), 2,3	6230	Base Plate, 6	
34-48	Nut (6-32 Hex.), 2	3617	Washer, 7	6347	Screw (6-32 x 3/8), 2	
34-52	Nut (6-32 Square), 1,2,3	3618	Insulator, 7	6390	Screw (6-40 x 3/16), 2	
34-54	Nut (1/4-18 Square), 6	3620	Fibre Washer, 7	6450	Glass (15 x 2-15/16 x 1/8), 2	
34-58	Nut (10-32 Hex.), 6	3628	Bushing, 6	6498	Post, 1	
34-66	Nut (4-36 Hex.), 2,3	3639	Lock Washer, 1,6	6560	Insulator, 1	
43-10	Plunger Stop, 7	3640	Lock Washer, 3	6565	Screw (8-32 x 1-1/4), 6	
125-23	Top Clamp, 2,3	3646	Lock Washer, 1,6,7	6630	Mounting Plate (Assem.), 1	
125-184	Fuse Block, 1	3647	Insulator, 7	6631	Mounting Plate, 1,8	
125-221	Receptacle, 3	3744	Brace, 1	6633	Connection Strip, 1	
125-237	Fuse (3 Amp.), 1	3778	Resistance (20 OHM) (W.E. Co. 18S), 7	6635	Connection Strip, 1	
125-238	Fuse (10 Amp.), 6	3899	Collar, 7	6637	Guard, 1	
125-278	Box, 3	4168	Bushing, 1	6638	Guard, 1	
125-299	Flexible Conduit, 6	4599	Upstop, 1	6642	Mounting Plate Pad, 1	
500-14	Rail, 1	4824	1 M.F. Condenser (W.E. Co. 21K), 1,7	6643	Printer Keyboard Cover (Assem.) (Bell System 12A Cover), 2	
500-96	Lock Washer, 6	5061	Ball Bearing, 6	6645	Copyholder, 2	
500-105	Plate, 1	5322	Cap Screw, 6	6746	Screw (6-40 x 5/16), 7	
500-205	Connection Spring, 1	5327	Screw (1/8-32 Special), 4,5	6780	Motor Generator (Assem.) - 60 Cycle, 6	
500-703	Foot, 3	5330	Nut (10-30 Acorn), 4,5,6	6781	Armature - 60 Cycle, 6	
1000-203	Washer, 2	5426	Resistance (600 OHM) (W.E. Co. 18AE), 7	6782	Carbon Brush (With Spring), 6	
1064	Screw (6-32 x 1/4), 1	5427	Resistance (1000 OHM) (W.E. Co. 18BM), 7	6783	Carbon Brush (With Spring), 6	
1069	Screw (10-32 Shoulder), 8	5428	Resistance (500 OHM) (W.E. Co. 18AC), 7	6827	Connecting Block (W.E. Co. 18B), 1	
1072	Thumbcrew (6-40), 2	5429	Switch, 1	6828	Mounting Plate (W.E. Co. S23B), 1	
1073	Thumbcrew (6-40), 8	5513	Rubber Collar, 1	6848	Screw (#10 Wood), 2,3	
1115	Screw (8-32 x 1/4), 1	5549	Rail Mounting (With Post), 1	6892	Bracket, 1	
1121	Screw (10-32 x 3/8), 1	5561	Connection Block, 1	7002	Washer, 2	
1122	Screw (8-32 x 9/32), 1	5562	Post, 1	7113	Control Relay (Assembly) (With Accessories), 7	
1157	Screw (8-32 x 1/2), 1,7	5564	Upstop, 1	7114	Motor Generator (Assem.) (With Accessories) (60 Cycle), 6	
1160	Screw (6-40 x 3/16), 7	5566	Collar, 1	7137	Box Connector, 1,6	
1161	Screw (6-40 x 1/4), 4,5	5697	Resistance (120 OHM) (W.E. Co. 18D), 7	7959	Magnet Bracket, 7	
1165	Screw (6-32 x 1/4), 2	5700	Resistance (30 OHM) (W.E. Co. 18J), 7	8015	Resistance (2000 OHM) (W.E. Co. 18BA), 7	
1166	Screw (4-36 x 1/4), 1					
1170	Screw (6-32 x 5/16), 1					
1172	Screw (2-56 x 5/16), 6					
1187	Screw (10-32 x 1/4), 1					
1208	Screw (10-32 x 5/8), 6					
1223	Screw (10-32 x 1/2), 1					
1253	Screw (8-32 x 3/8), 1					
1273	Screw (8-32 x 1-1/2), 1					
1275	Screw (10-32 x 1-1/2), 1,7					
1294	Screw (4-36 x 1/2), 3					

8077	Armature - 50 Cycle, 6	71513	Armature (With Collector Ring and Starting Mechanism) (50 Cycle), 4	73227	Brush Holder, 6
8173	Resistance (100 OHM) (W.E. Co. 18U), 7	71514	Armature (With Collector Ring and Starting Mechanism) (60 Cycle), 4	73228	Brush Holder, 6
8178	Plug, 1	71515	Generator (Assem.) - 50 Cycle, 4	73229	Screw (Special), 6
8256	Break Key Knob (W.E. Co. W-128524), 1	71516	Generator (Assem.) - 60 Cycle, 4	73230	Clamping Rod, 6
8262	Cam Key Knob (W.E. Co. W-132717), 1	71517	Armature (Assem.) - 50 Cycle, 4	73493	Coupling Disc, 4,5
8327	Rubber Lining (20-1/2 Long), 2,3	71518	Armature (Assem.) - 60 Cycle, 4	73494	Table Frame (Assem.) (Bell System 12A), 2
8433	Motor Generator (Assem.) 50 Cycle, 6	71519	Carbon Brush (With Spring), 4,5	73496	Foot, 2
8434	Motor Generator (Assem.) (With Accessories (50 Cycle), 6	71520	Carbon Brush (With Spring), 4	73572	Screw (1/4-24 x 1), 4,5
8443	Screw (Cap), 6	71521	Motor-Generator Set (Assem.) 30 Watt - 25 Cycle (Bell System) K85380-01 List 3), 5	73573	Nut (1/4-24 Hex.), 4,5
8514	Stop Plate, 3	71522	Motor Generator Set (Assem.) (With Accessories) (25 Cycle), 5	73588	Contact Spring, 7
8515	Filler Block, 3	71523	Stator (With Winding), 4	73592	Spring Plate, 7
8539	Screw (6-32 x 1/2), 7	71524	End Shield, 4	73593	Contact Spring, 7
8653	Copyholder, 3	71525	End Shield, 4	73640	Bracket (With Rod), 3
8654	Printer-Keyboard Cover (Assem.) (Without 6162 Plate) (With Message Line Guide), 3	71526	Oil Well Cap, 4	74793	Message Line Guide, 3
8776	Post, 2	71527	Oil Wick, 4	75131	Motor (Assem.) - 25 Cycle, 5
8778	Cover Arm, 2	71528	Bearing Lining, 4	75132	Stator (With Winding), 5
8787	Crank, 2	71529	Dust Cap, 4	75133	End Shield, 5
8791	Pad (Front & Rear Top), 2	71531	Clamping Rod, 4	75134	End Shield, 5
8792	Pad (Bevel), 2	71533	Guard, 4	75135	Oil Well Cap, 5
8793	Pad (Rear), 2	71534	Brush Holder Block, 4	75136	Oil Wick, 5
8794	Pad (Left Side), 2	71535	Brush Holder Tube, 4,5	75137	Bearing Lining, 5
8795	Pad (Right Side), 2	71536	Washer (For Brush Holder Tube), 4,5	75138	Dust Cap, 5
8799	Paper Cutter, 2	71537	Lead Clamp, 4,5	75139	Clamping Rod, 5
8894	Printer-Keyboard Cover (Assem.) (With Crank) (Without 6162 Plate) (Bell System 12S Cover), 2	71538	Screw (10-30 x 1), 4	75140	Armature (With Collector Ring and Starting Mechanism), 5
8897	Plate, 2	71539	Field Core, 4	75142	Brush Holder Block, 5
8974	Post, 2	71540	End Shield, 4	75143	Screw (10-32 x 1), 5
8988	Mounting Plate Frame, 3	71541	Outlet Bushing, 4,5	75144	Generator (Assem.) - 25 Cycle, 5
8990	Pad Retainer, 2	71542	Coupling Flange (With Pins), 4,5	75145	Field Core, 5
9695	Plunger, 7	71543	Clamping Rod, 4	75147	End Shield, 5
35503	Rubber Foot, 8	71544	Field Coils, 4	75148	Carbon Brush (With Spring), 5
41663	Washer, 8	71545	Terminal, 4,5	75149	Base (With Guard), 5
49358	Screw (10-32 x 5/8), 4,5	71546	Insulation (For Field Coil), 4	75209	Guard, 5
49513	Resistance (80 Ohm) W.E. Co. 18K), 7	71547	Fibre Washer (Thin), 4,5	75210	Clamping Rod, 5
70086	1/2 M.F. Condenser (W.E. Co. 21AK), 1	71548	Fibre Washer (Thick), 4,5	75211	Field Coil, 5
70191	Receptacle, 6	71549	Fan, 4,5	75212	Insulation (For Field Coil), 5
70192	Plug, 6	71550	Brush Holder, 4	75213	Brush Holder, 5
70204	Pad Retainer, 2	71546	Nut (6-32 Hex.), 2	75214	Armature (Assem.) - 25 Cycle, 5
70411	Resistance (4000 OHM) (W.E. Co. 18FC), 7	71842	Washer, 2	75231	Bushing, 7
70415	Resistance (1510 OHM) (W.E. Co. 18DA), 7	71853	Resistance, (300 OHM) (W.E. Co. 18AF), 7	77314	Glass Rail-Right (For 72957 or 77316), 2
70416	Resistance (200 OHM) (W.E. Co. 18G), 7	71947	Cable (W.D. 642), 1	77315	Glass Rail-Left (For 72957 or 77316), 2
70772	Glass Rail (For 6450), 2	72144	Stud, 2	77316	Glass (17-1/2 x 4-1/8 x 1/8), 2
71149	End Play Adj. Spring, 6	72198	Set of Accessories for Motor Generator Sets, 4,5,6	77970	Guard, 1,8
71155	Screw (6-32 x 1-1/4), 3	72480	Receptacle, 4,5	77999	Resistance (500 OHM), 1,7
71188	Copper Bearing Retainer, 6	72481	Plug, 4,5	78434	Bracket, 7
71189	Copper Bearing Retainer, 6	72484	Control Relay (Assem.), 7	78790	Cord (With Receptacle), 4,5
71258	Message Line Guide, 3	72583	Cam Key Stop, 3	78791	Cord (With Plug), 4,5
71259	Wooden Filler, 3	72592	Bracket, 3	78904	Nut (8-32 Hex. Brass), 1
71507	Motor-Generator Set (Assem.) 30 Watt, 50 Cycle (Bell System K85380-01 List 2), 4	72957	Glass (15 x 4-1/8 x 1/8), 2	78905	Washer (Fibre), 1
71508	Motor-Generator Set (Assem.) (With Accessories) (50 Cycle), 4	73201	Nut (8-36 Hex.), 4,5	79513	Plate, 7
71509	Motor-Generator Set (Assem.) 30 Watt - 60 Cycle (Bell System K8-5380-01 List 1), 4	73202	Washer (Brass), 1,4,5	80260	Cord, 4,5
71510	Motor-Generator Set (Assem.) (With Accessories) (60 Cycle), 4	73203	Screw (8-36 x 1/2), 4,5	80261	Cord, 4,5
71511	Motor (Assem.) - 50 Cycle, 4	73204	Nut (10-30 Hex.), 4,5	80351	Screw (8-36 x 5/16), 4,5
71512	Motor (Assem.) - 60 Cycle, 4	73205	Lead Clamp, 4,5	80452	Cable (W.D. 889) (Bell System), 1
		73206	Screw (10-30 x 1/2), 4,5	80925	Box Connector, 3,6
		73207	Base (With Guard), 4	82516	Retaining Spring, 1
		73223	Stator (With Winding), 6	82832	Lock Washer, 4,5
		73224	Field Coil, 6	84014	Screw (1/4-18 x 9/16), 6
		73225	End Flange (With Bearing), 6	84340	Washer (Bakelite), 6
		73226	End Flange (With Bearing), 6	84341	Washer (Bakelite), 6
				84403	Base (With Guard), 4
				84404	Base (With Guard), 5
				87486	Attachment Plug Base, 6
				87508	Connector Bracket, 6
				87936	Bracket, 3
				87937	Bracket, 3
				89548	Contact Spring (W.E. Co. F-149618), 1
				89980	Brush Holder Ring (With Set Screw), 6
				91742	Lock Nut (Special), 1,3,6