

ADDITION TO ADJUSTMENT BULLETINS

- 148, Issue 2 - Perforator Transmitter (Model 15), Page 15
166, Issue 2 - Perforator Transmitter (Model 15), Page 17

Insert the following after the CAM PULSING CONTACT ADJUSTMENTS:

The following adjustments apply only to units equipped with the new style cam pulsing contacts. Old style cam pulsing contact assemblies have riveted operating springs; new style have springs of one-piece construction.

CAM PULSING CONTACT ADJUSTMENTS, NEW STYLE (Figures 33.1 and 33.2)

Note: The cam operated pulsing contact assembly consists of two similar pairs of contact springs which require like adjustments. Apply the adjustments given in Figures 33.1 and 33.2 to each pair independently.

* * *

CAM PULSING CONTACT ASSEMBLY ADJUSTMENTS

(A) Contact Alignment

Requirement

Cam follower ride centrally on cam.

Contact points in alignment.

To adjust

Loosen screws and shift contact assembly.

(B) Contact Clearance

Requirement

Min. .010"

Max. .020"

To adjust

Bend lower spring.

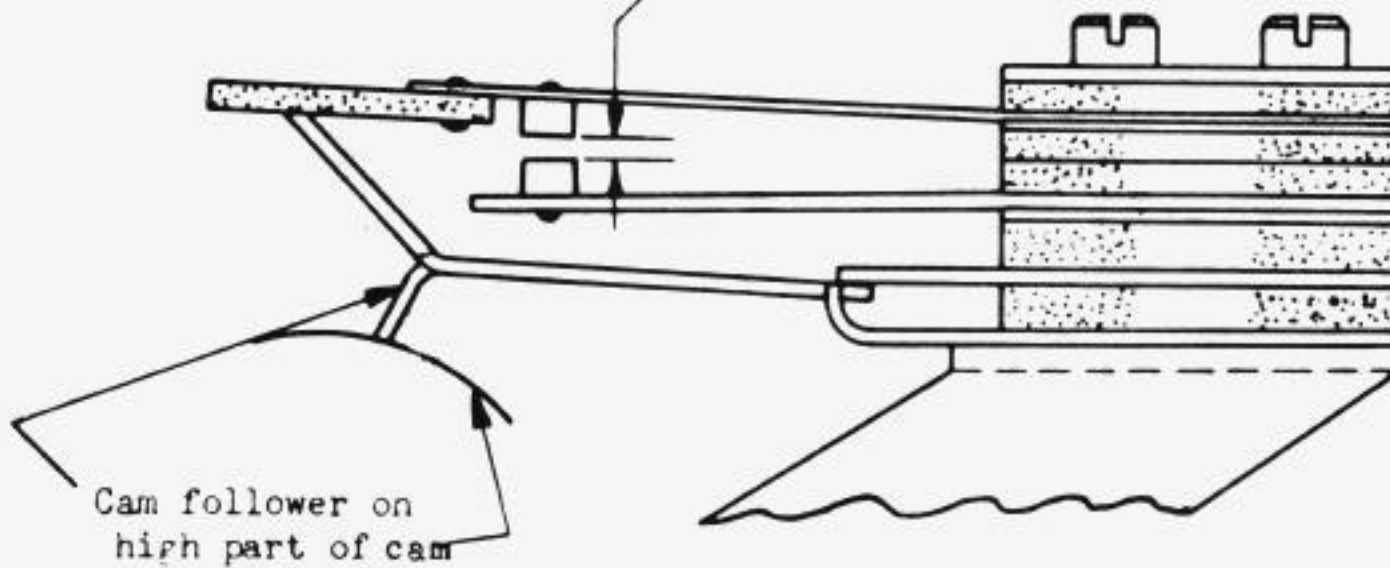


FIGURE 33.1

Remove filters if so equipped.

(A) Contact Tension

Requirement to separate contacts
Min. 3-1/2 ozs.
Max. 4-1/2 ozs.
Contact surfaces must meet
squarely.

To adjust
Bend springs.

Recheck Contact Clearance,
Figure 33.1.

(B) Cam Follower Clearance

Requirement
Some clearance
To adjust
Refine contact adjustments.

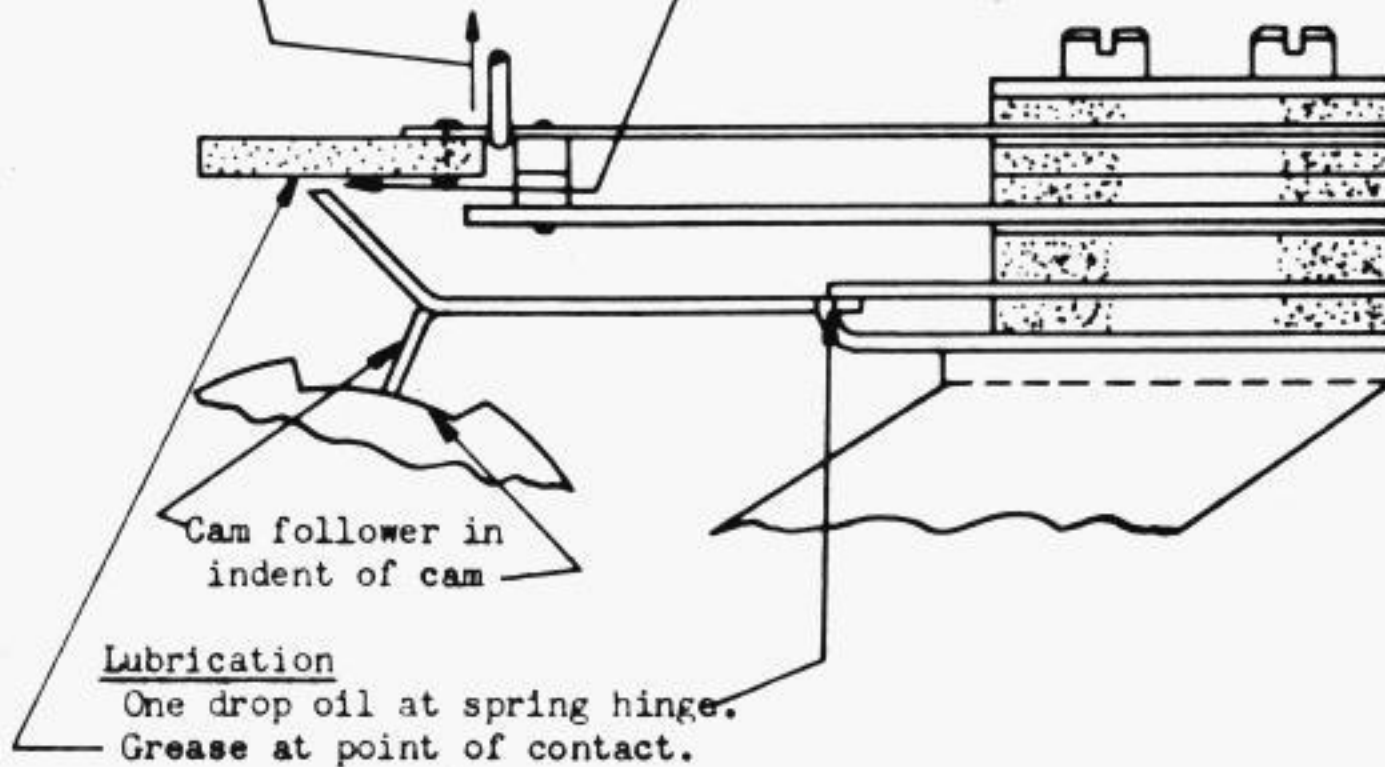


FIGURE 33.2