

32 COVERS
ADJUSTMENTS

CONTENTS	PAGE	
1. GENERAL	1	Receive (KSR) and Automatic Send-Receive (ASR) Sets (Figures 1 and 2).
2. BASIC UNIT	3	1.02 After completing an adjustment, replace cover and/or any parts that were removed. Check any adjustments affected by the removal of the cover and/or parts.
Call Control Area		
Dial to cover	3	
Knob to bezel	3	CAUTION: ELECTRICAL POWER MUST BE REMOVED FROM UNIT BEFORE ANY ADJUSTMENTS ARE MADE.
Paper Area		
Low paper contact operating arm . . .	4	1.03 In the adjustments covered in this section, location of clearances and position of parts are illustrated by line drawings. Requirements and procedures are set forth in the texts that accompany the line drawings.
Tape Punch Area		
Control pushbuttons	7	1.04 Reference to left, right, front, or rear, etc, consider the cover to be viewed from a position where the lid is up and the nameplate position is facing the viewer.
Tape Reader Area		
Reader mounting bracket (early design)	5	1.05 Unless specifically stated otherwise, position screws or nuts friction tight to make an adjustment, and tighten them securely once the adjustment has been made.
Reader mounting bracket (late design)	6	1.06 Tools needed to perform adjustments are included in TP185830 maintenance tool kit and are listed in Section 570-005-800.
1. GENERAL		1.07 Check appropriate disassembly and re-assembly section for approved procedure of cover and parts removal.
1.01 This section is issued to provide adjustment information for the 32 typing unit, tape punch, and reader covers. The requirements apply to covers for both Keyboard Send-		

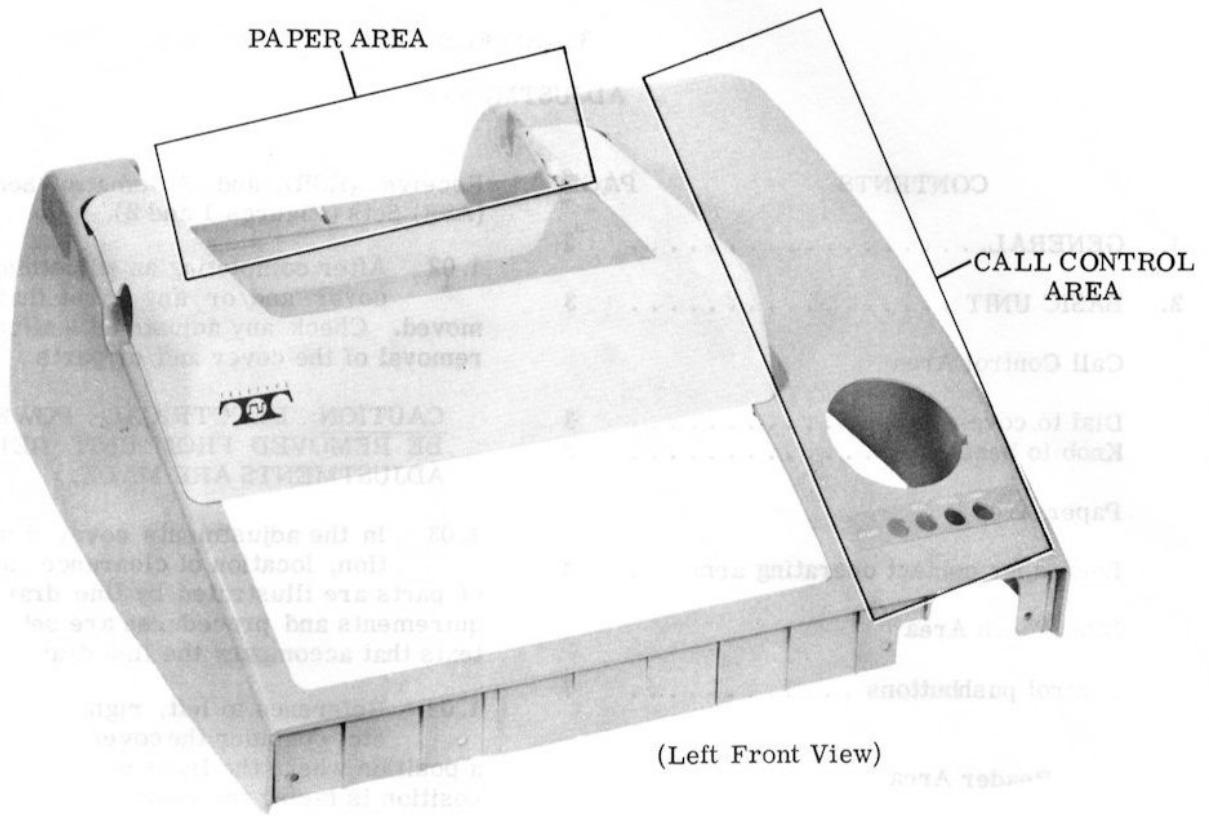


Figure 1 - Cover (Keyboard Send-Receive Set)

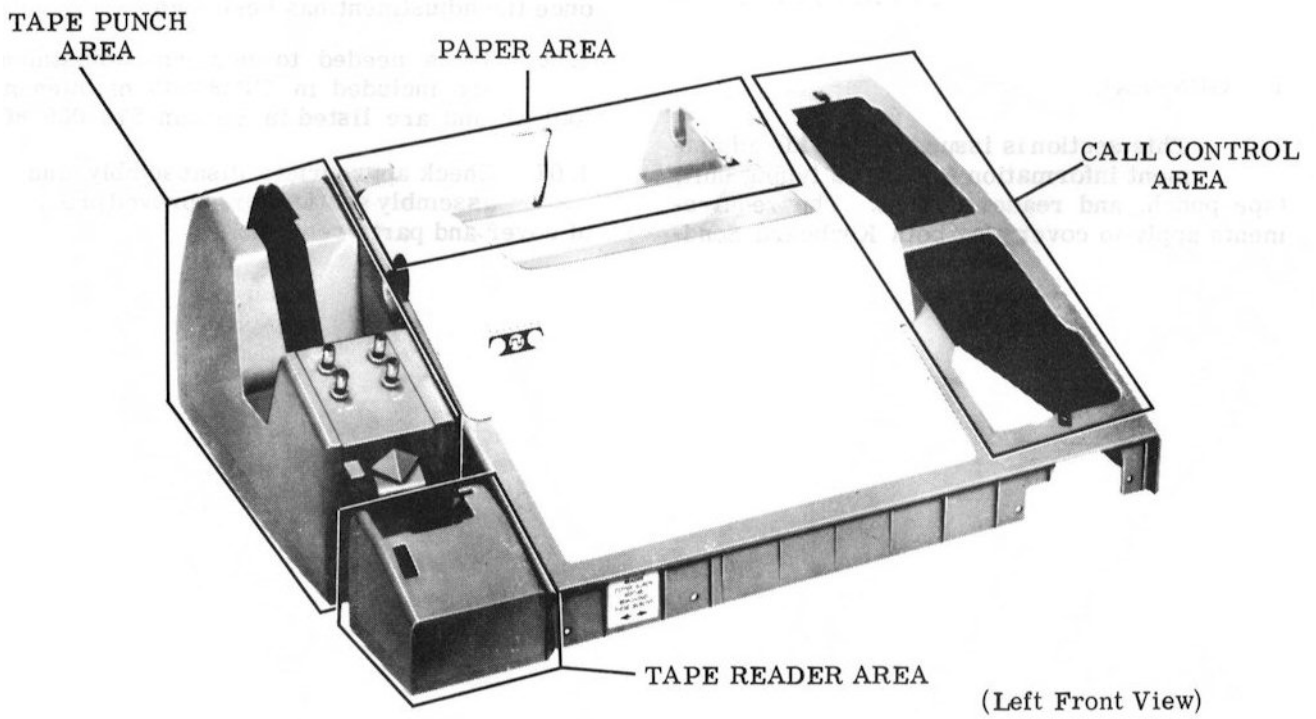
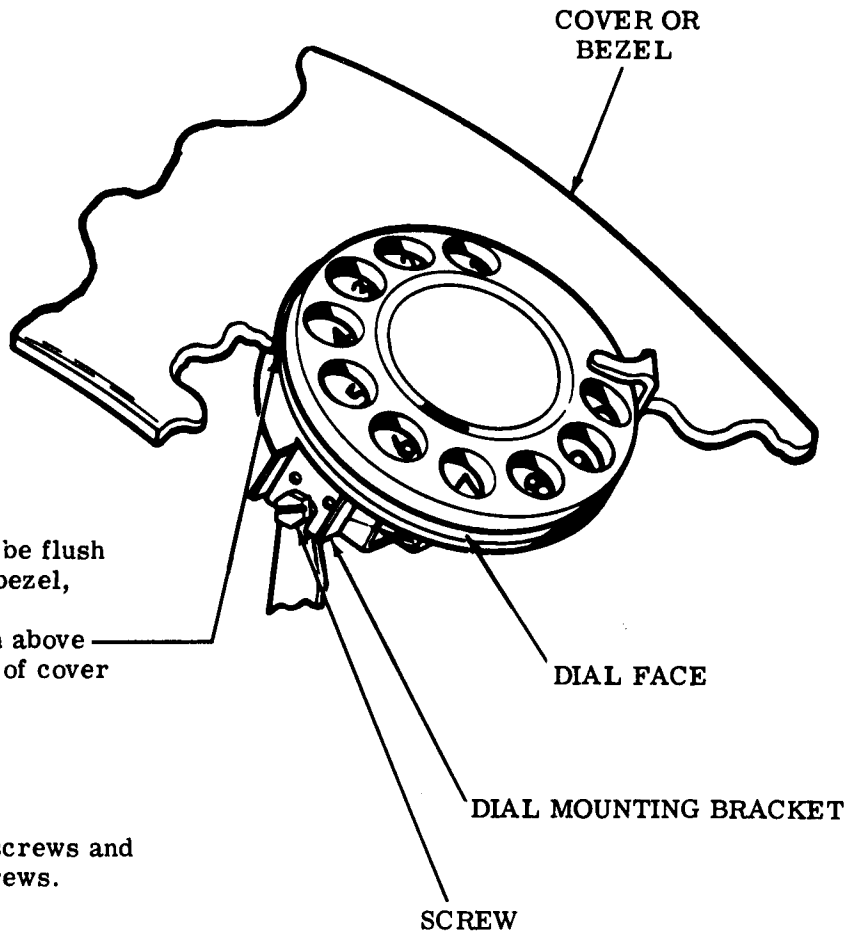


Figure 2 - Cover (Automatic Keyboard Send-Receive Set)

2. BASIC UNIT

2.01 Call Control Area

(Left Front View)



DIAL TO COVER

Requirement

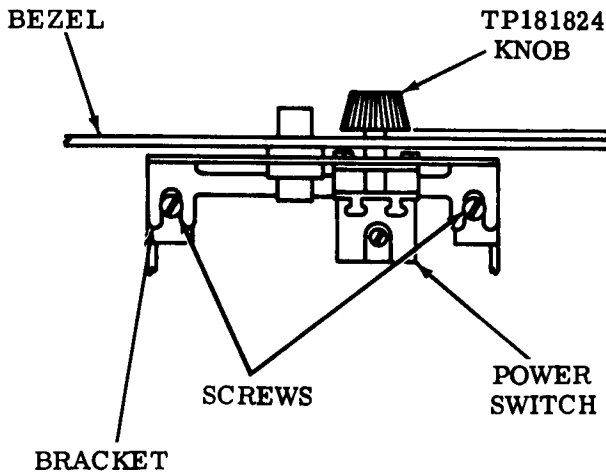
The numbered dial face should be flush to outside surface of cover or bezel, within

1/16 inch below---3/32 inch above and parallel to outside surface of cover or bezel, within

1/16 inch as gauged by eye.

To Adjust

Loosen dial mounting bracket screws and position dial face. Tighten screws.



(Rear View)

KNOB TO BEZEL

To Check

Fully seat the TP181824 knob on the power switch.

Requirement

Min some---Max 1/8 inch between the bottom of the knob and the face of the bezel.

To Adjust

Remove the TP181824 knob and the cover (refer to appropriate disassembly and reassembly section). Loosen screws and position bracket. Tighten screws and replace cover and knob. Recheck Requirement.

2.02 Paper Area

Note 1: The following adjustment applies only to typing units with TP181441 switch mounted on the base casting next to the left function shaft clamp.

LOW-PAPER CONTACT OPERATING ARM

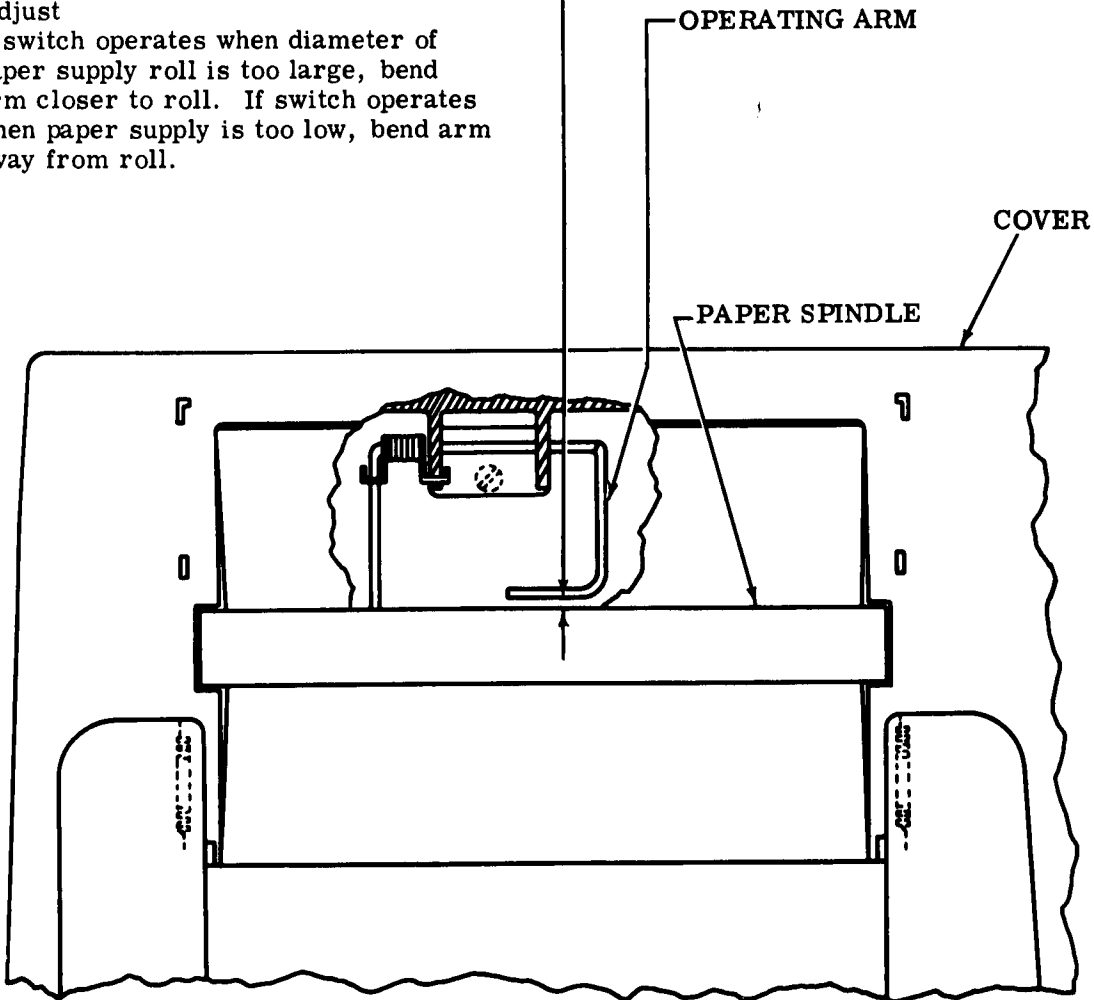
- (1) Requirement (Preliminary)
With paper spindle in place
Min 1/16 inch---Max 3/16 inch
between operating arm and spindle.

To Adjust
Bend the wire operating arm.

Note 2: The operating arm should pass through the cover slot, free from any contact with the cover.

- (2) Requirement (Final)
Switch will operate when predetermined low paper supply is reached.

To Adjust
If switch operates when diameter of paper supply roll is too large, bend arm closer to roll. If switch operates when paper supply is too low, bend arm away from roll.



(Top View)

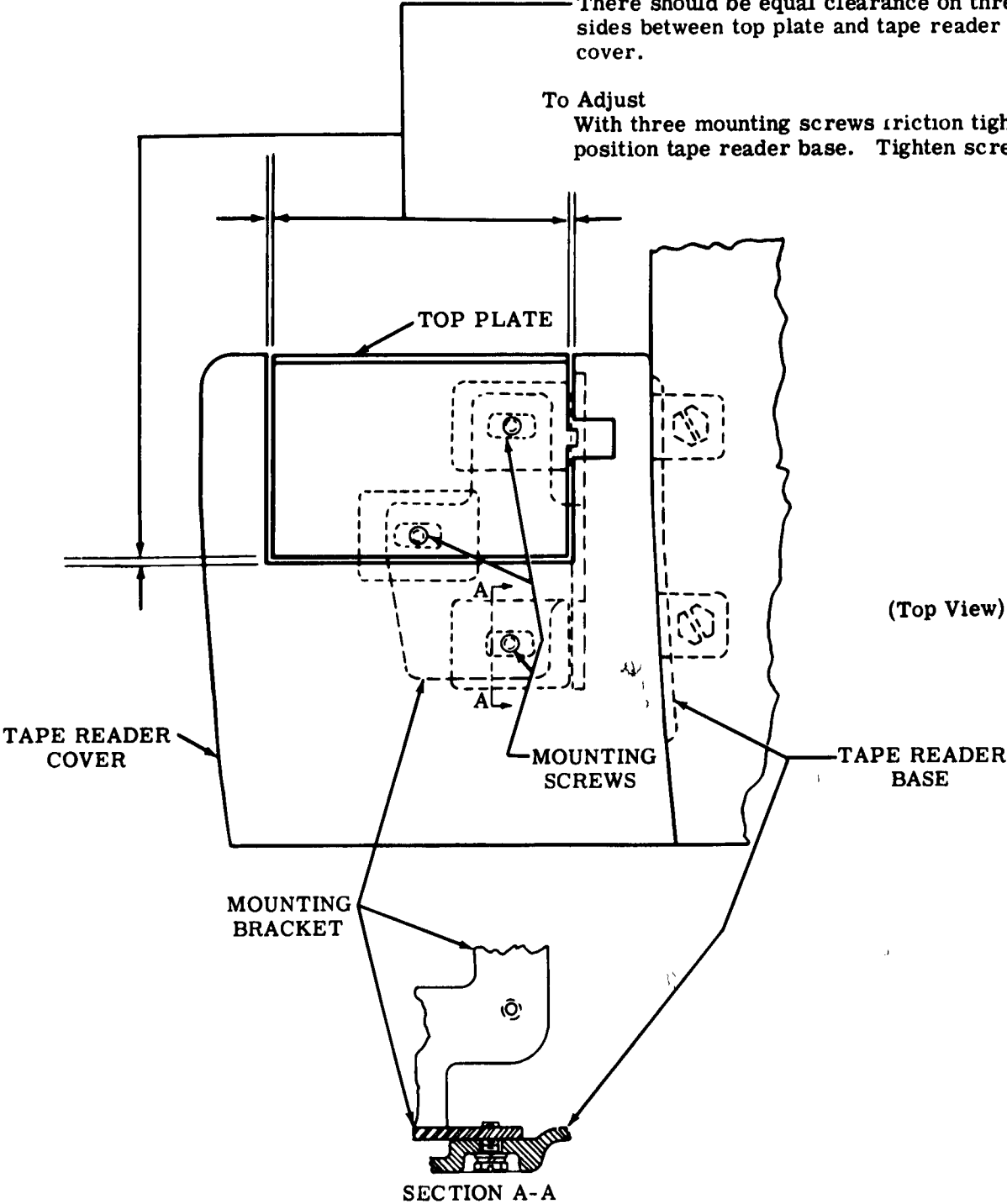
2.03 Tape Reader Area

Note: The following adjustment applies to tape readers with early design bases.

READER MOUNTING BRACKET (Early Design)

Requirement
There should be equal clearance on three sides between top plate and tape reader cover.

To Adjust
With three mounting screws friction tight, position tape reader base. Tighten screws.



2.04 Tape Reader Area (continued)

Note: The following adjustment applies to tape readers with late design bases.

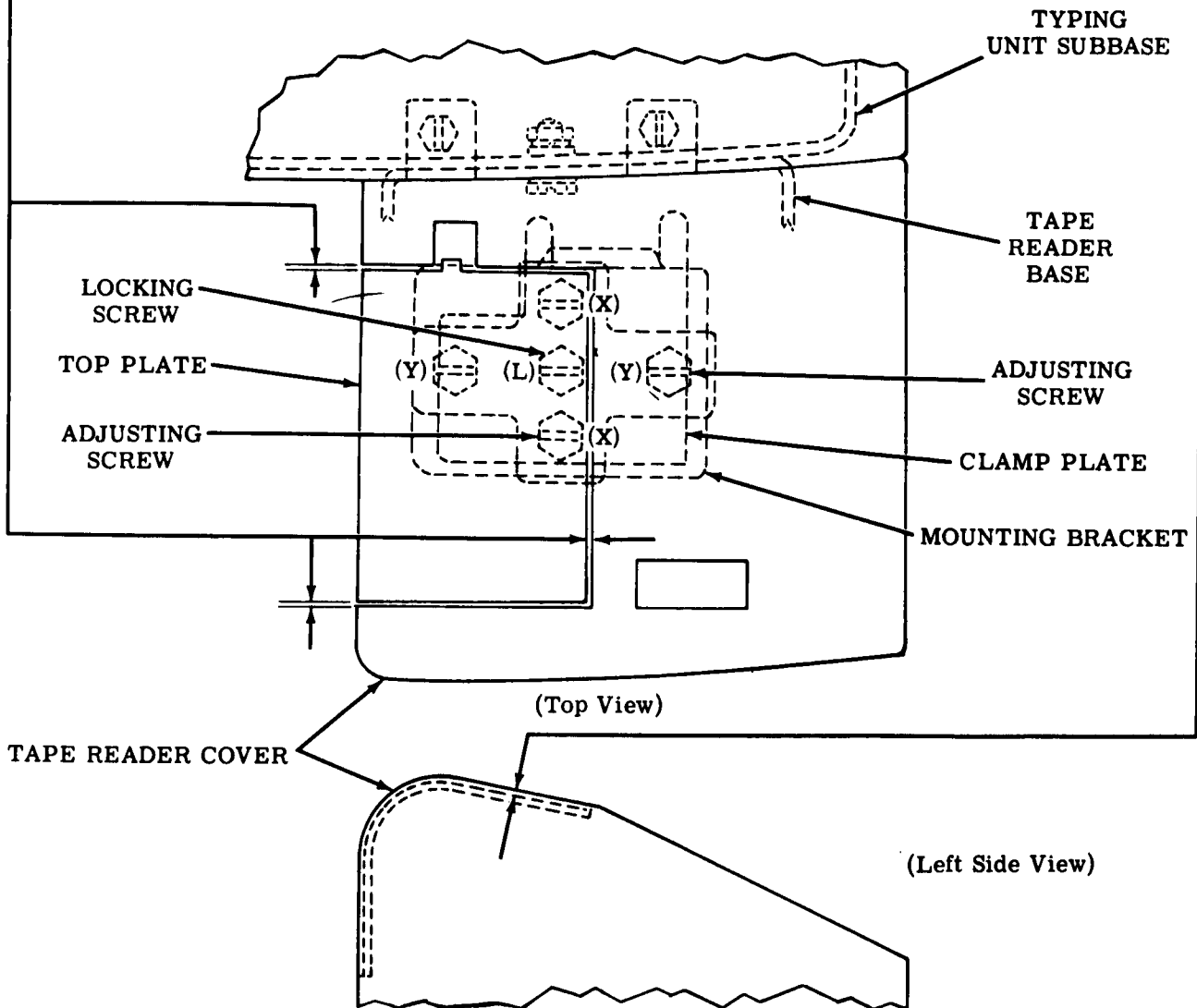
READER MOUNTING BRACKET (Late Design)

- (1) Requirement
 Top plate to be
 Min flush---Max 0.030 inch
 below cover.

- (2) Requirement
 Equal clearance between top plate and tape reader cover on three sides.

To Adjust

With four adjusting screws and locking screw (L) loosened and mounting bracket lying flat on tape reader base, position tape reader. Run two adjusting screws (X) up until requirement is approximately met. Tighten locking screw friction tight. Run two adjusting screws (Y) up until requirement is approximately met. Refine all four adjusting screws, loosen locking screw if necessary. Tighten locking screw.



2.05 Tape Punch Area

CONTROL PUSHBUTTONS

Requirement

Min 1/2 oz---Max 1-1/2 oz
 to push each control pushbutton
 down 1/8 inch
 as gauged by eye, while
 remaining control pushbuttons
 remain in their normal upward
 positions.

