

INSTRUCTIONS FOR INSTALLING THE 185971 MODIFICATION
KIT ON MODEL 32/33 TYPING UNIT TO PROVIDE AN END-OF-
LINE BELL TO RING ON APPROXIMATELY THE 62nd CHARACTER

1. GENERAL

a. The 185971 modification kit provides the Model 32/33 Typing Unit with an end-of-line signal on the 61st character.

b. When the unit being modified has the automatic line feed carriage return, the 183498 automatic code bar must be replaced with one of the following (not furnished with the kit):

183495 Code Bar for a 69 character line.

183496 Code Bar for a 72 character line.

183497 Code Bar for a 74 character line.

c. The 185971 kit consists of:

1	90790	Flat Washer	1	183498	Codebar
1	119649	Retainer Ring	1	185968	Latch
1	119652	Retainer Ring	1	185969	Hub
1	121923	Spring	1	185970	Lever W/Post
1	124177	Lockwasher	1	185986	Eccentric Post
1	151630	Screw	1	185987	Roller

d. For parts information, on other than parts in the kit, see Teletype Parts Bulletin 1184B.

2. INSTALLATION (Figures 1 and 2)

a. Place the carriage to the extreme left of the printer so that the dash pot piston is located in the dash pot cylinder.

b. Remove the 84575, 180956 and 180922 springs from the right end of the code bar basket mechanism. Remove the 180921 spring bracket. Remove the 180948 code bar and replace it with the 183498 code bar, reverse the procedure for assembly being careful to re-assemble the springs in their proper place.

c. Assemble the 185970 lever W/Post, 121923 spring, 185968 latch, 185969 hub, 90790 washer, 151630 screw and 124177 lock washer. (See figure 1)

NOTE

On sprocket feed machines some difficulty may be experienced during the assembly of these parts. In these cases, remove the 180788 carriage rear rail which can be done without removing the carriage. Refer to the standardized information for the carriage rear rail adjustments. Set up the condition of the adjustments as given; measure and record the gaps for later use. (Section 3). Assemble the parts listed in Paragraph 2. c. above to the rail after disassembly.

d. Remove the 180472 eccentric post, 180470 roller and 119649 retaining ring from the print carriage, discard these parts but retain the 3606 nut and 124177 lock washer.

e. Place the 185987 roller on the 185986 eccentric post and assemble first the 119649 and then the 119652 retaining rings. Assemble this roller assembly to the carriage lower plate assembly using the 3606 nut and 124177 lock washer previously saved. (See Figure 2).

f. Re-assemble the 180788 carriage rear rail if removed.

3. ADJUSTMENTS AND LUBRICATION — Make the following adjustments and lubrication referring to Teletype Bulletin 273B (Bell System refer to the standardized information).

a. Make the Carriage Rear Roller adjustment.

b. Make the Carriage Rear Rail adjustments to the gaps recorded in Paragraph 2. c. note.

c. Make the Margin Bell Crank adjustment.

d. Oil the 183498 code bar, 180788 carriage rear rail, 180470 roller, 181304 latch, and 181305 spring.

*

*

*

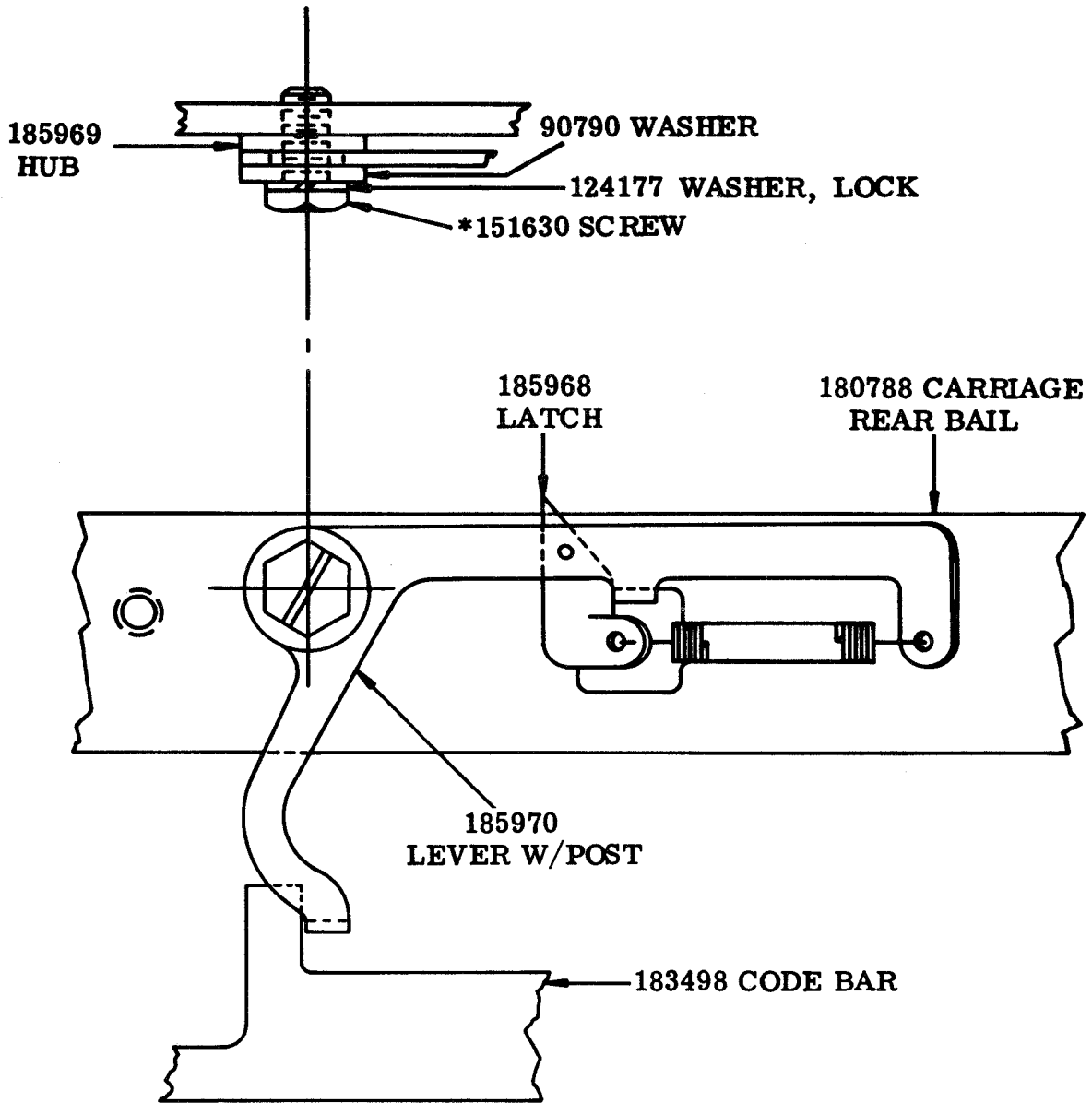


FIGURE 1

50342S

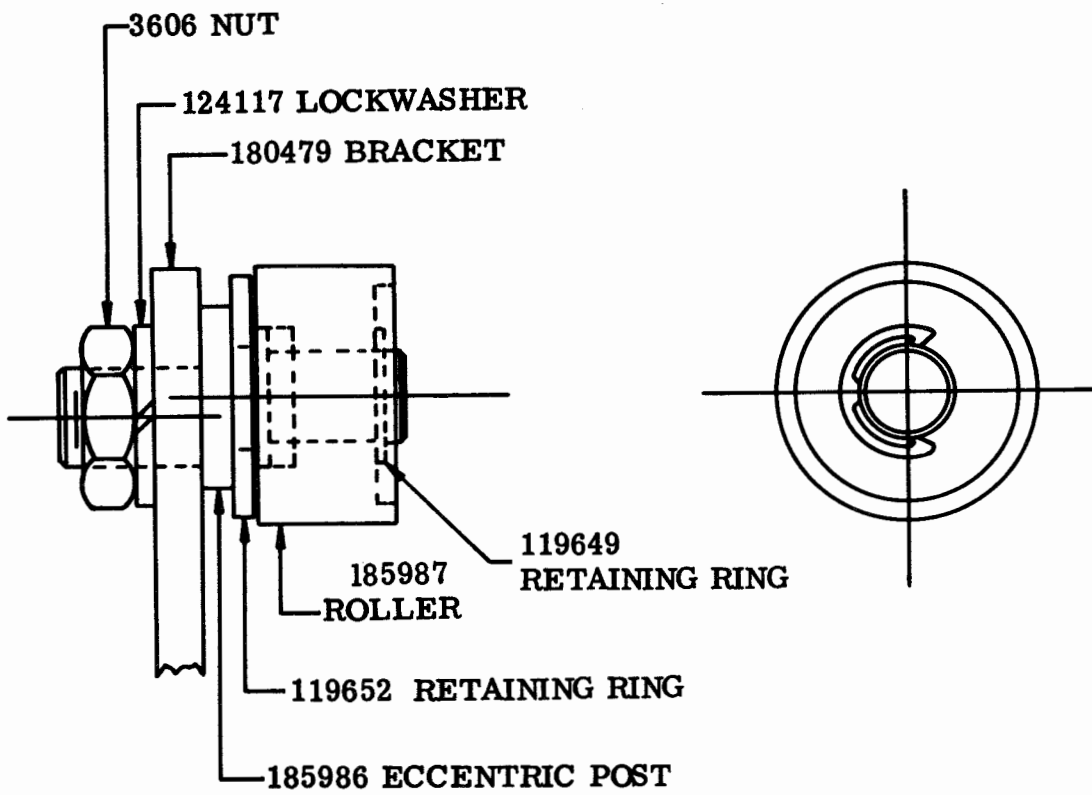


FIGURE 2