

35 CONSOLE AND TABLE MODEL CABINET (LAC) - KSR/RO

PARTS

Figure	Contents	Page
1	Upper and Lower Cover	2
2	Faceplates	3
3	Pedestal	4
4	Lower Cover, Pan, Pedestal, and Mounting Rack	5
5	Control Panels	6
6	Control Panel Components	7
7	Lamp Brackets and Line Guides	8
8	307228** Modification Kit to Add Offset Copyholder	9
9	Speaker, Signal Bell and Hand Held Receiver	10
10	Paper Handling and Directory Holder Modification Kits	11
	Numerical Index	12

BELL SYSTEM and TELETYPE CODE CROSS-REFERENCE	
Bell System Code	Teletype Code
35A**	LAC300**
35C**	LAC301**
35D**	LAC302**

NOTE:
When ordering parts from this section,
prefix each number with the letters TP.

PAINT FINISH COLOR CODE CHART (for parts and assemblies requiring a paint finish)									
Color	Finish Suffixes				Color	Finish Suffixes			
	Wrinkle Finish	Smooth Finish	Textured Vinyl	Smooth Vinyl		Wrinkle Finish	Smooth Finish	Textured Vinyl	Smooth Vinyl
Beige		ET			Gray, Federal		BV	GG	
Beige, Light		EL		HC	Gray, Green	AB (40)	BK	GA (45)	
Beige, Rose		ER			Gray, Light		EJ		HB (68)
Black	AA (37)				Gray, Covert				HE
Black, High Gloss		BA (34)			Gray, Olive		EW	GE	HF (46)
Black, Semi Gloss		BB			Gray, Maritime				
Blue, Aqua		EK			Deck	AJ	BJ		
Blue, Brussels Light		EC			Gray, Oxford		EP		
Blue, Medium		ES			Green, Gray	AB (40)	BK	GA (45)	
Brown, Dark	AD (38)				Green, Moss		EN		HD
Brown, Light	AC (39)				Ivory		EM		
Fawn				HG	Pink, Rose		EU		
Gray, Beige			GC		Turquoise		EV		
Gray, Charcoal	AL	BZ	GF	HA	White		EH		
Gray, Dark			GB		Yellow, Pastel		EG		

The double asterisk (**) denotes a painted part. Suffix to be applied following the part number.
Number in parenthesis indicates Bell System code.

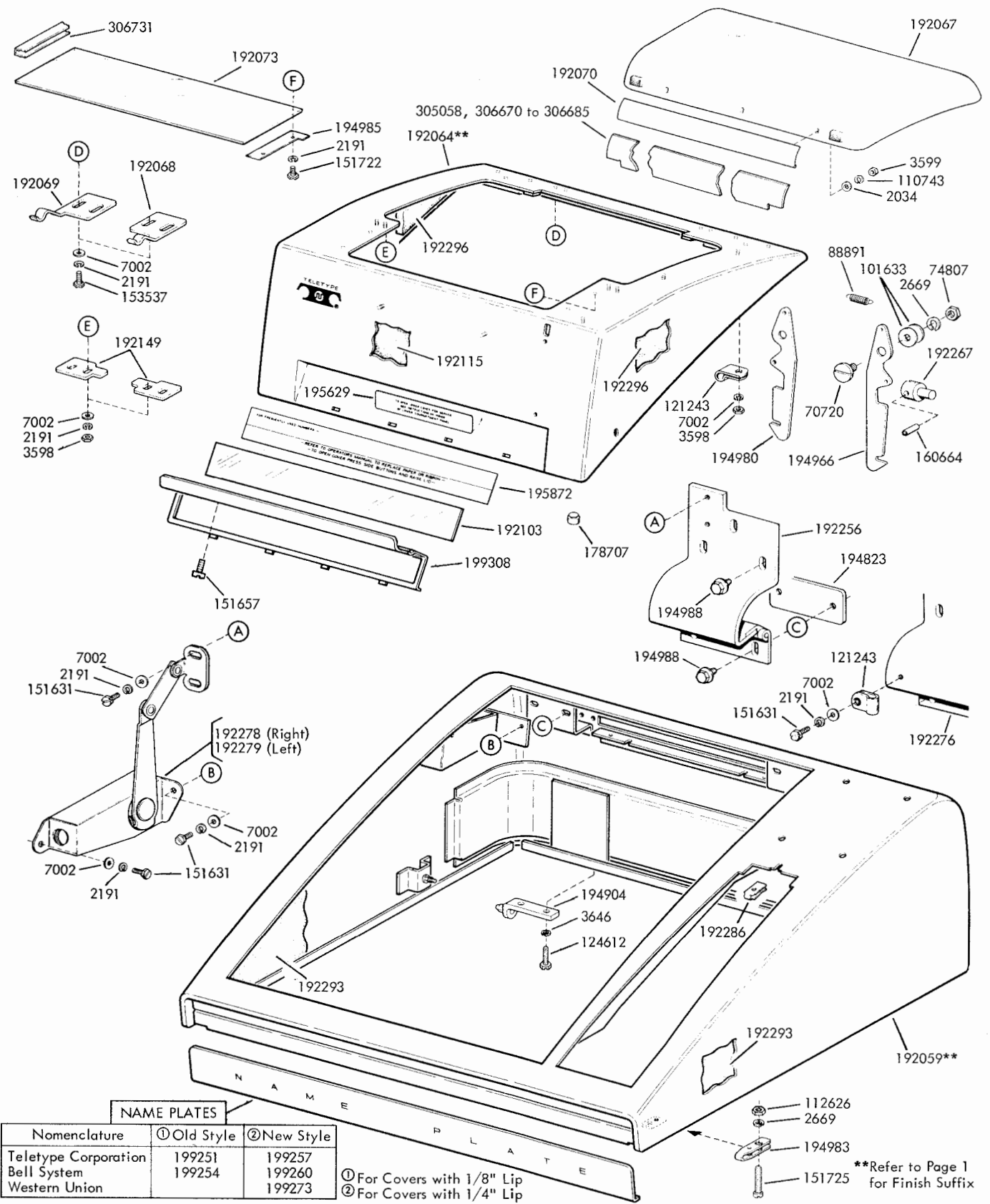


FIGURE 1. UPPER AND LOWER COVER

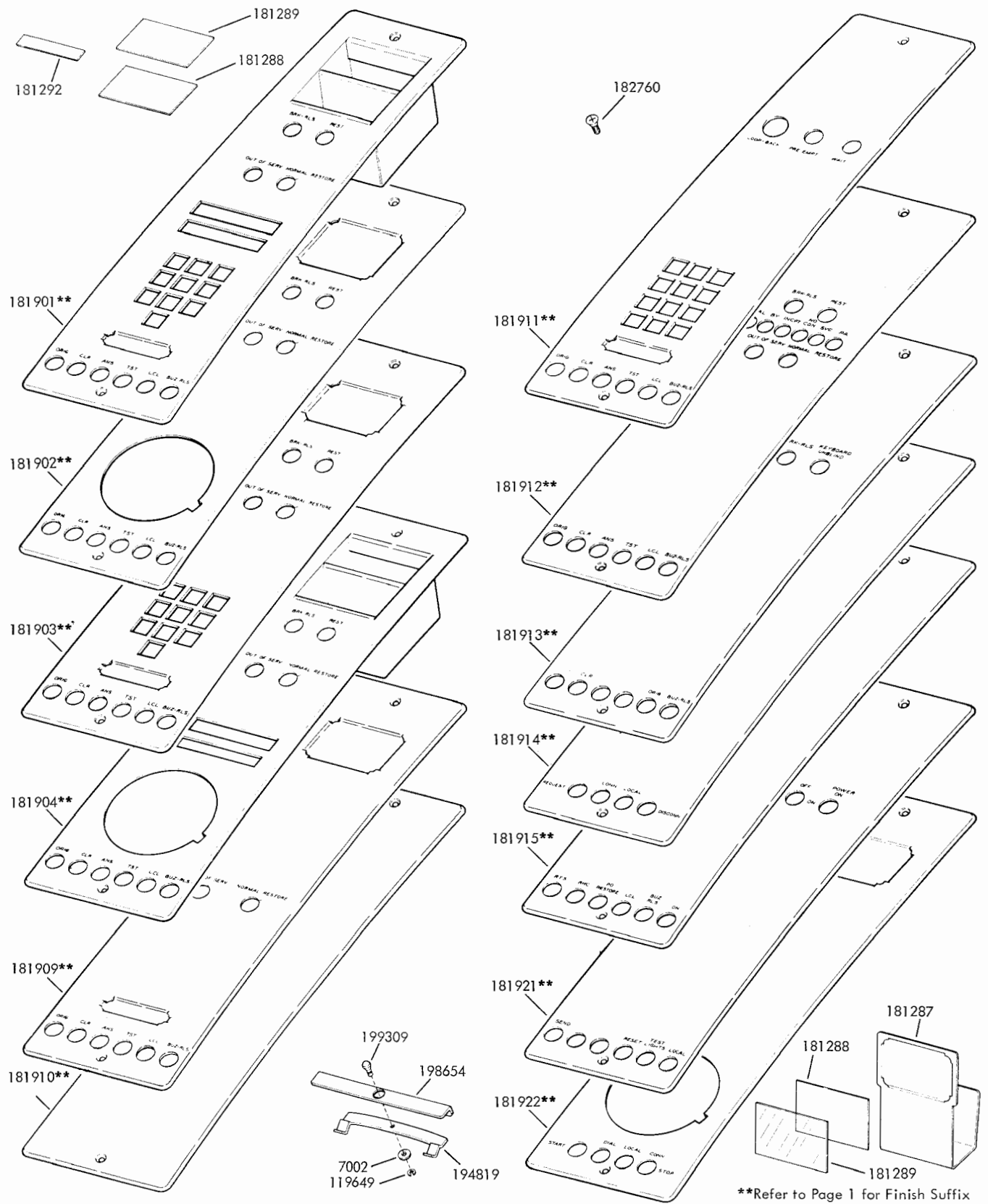
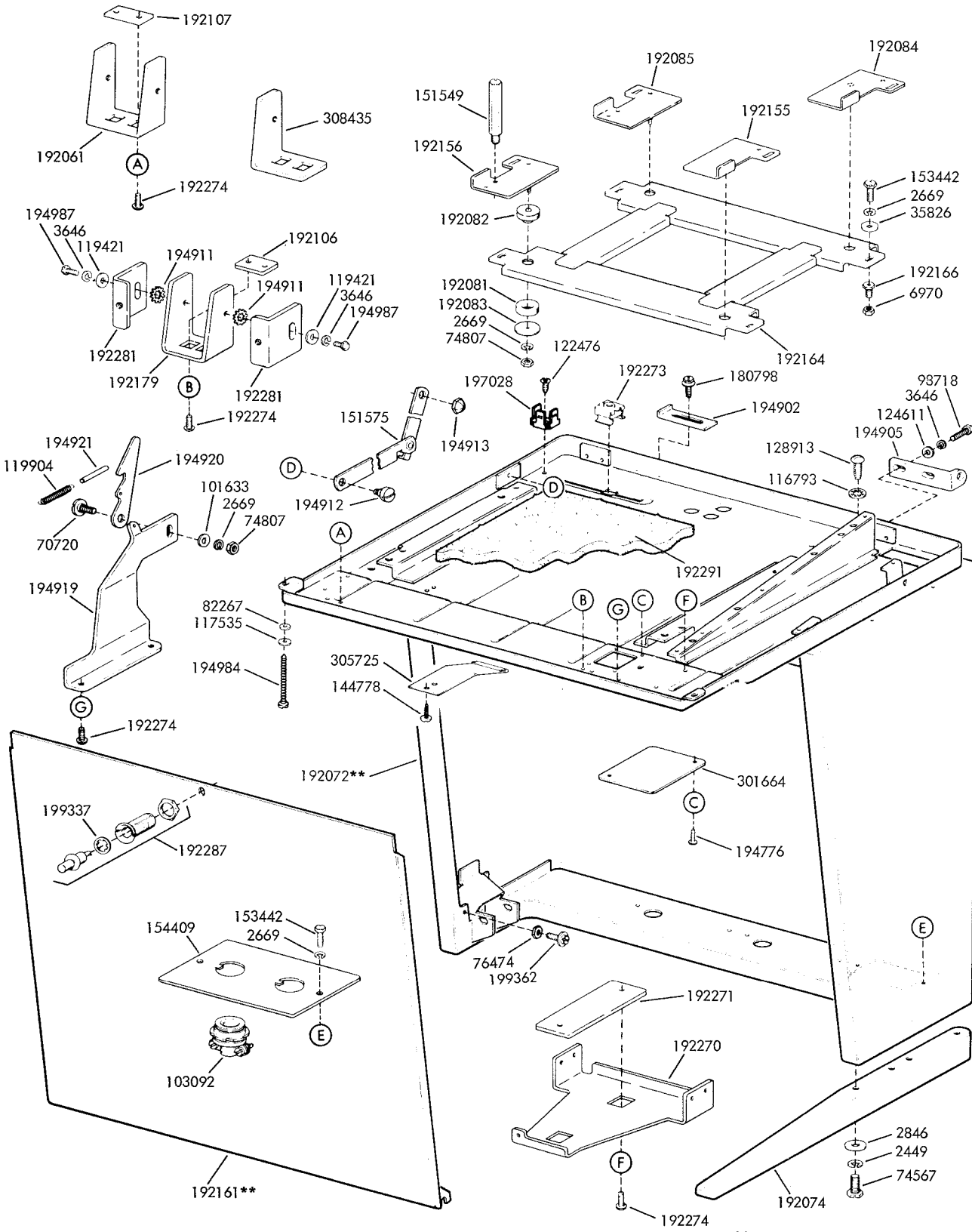


FIGURE 2. FACEPLATES



**Refer to Page 1 for Finish Suffix

FIGURE 3. PEDESTAL

NAME PLATES		
Nomenclature	① Old Style	② New Style
Teletype Corporation	199252	199258
Bell System	199255	199261
Western Union		199274

- ① For Covers with 1/8" Lip
- ② For Covers with 1/4" Lip

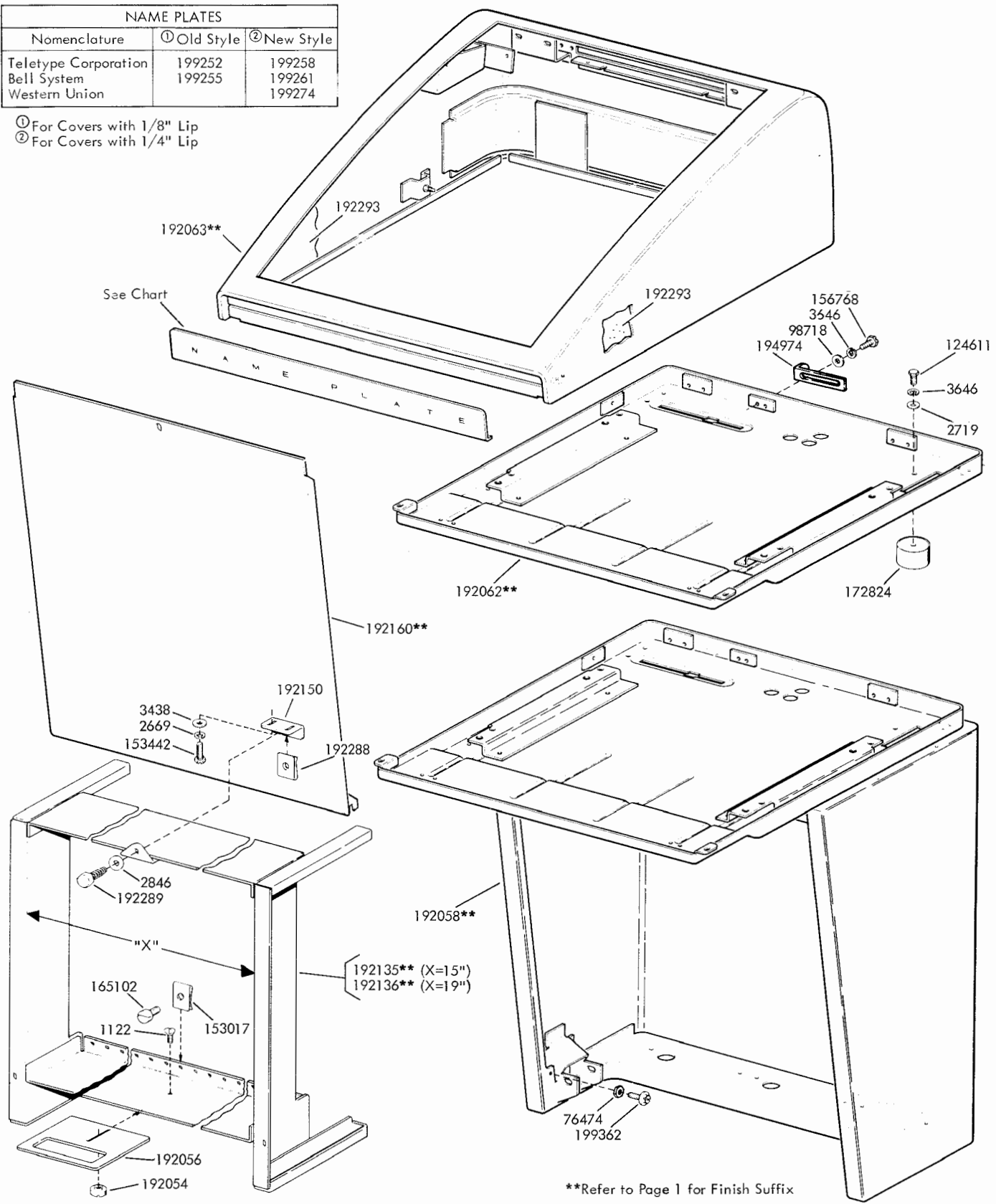
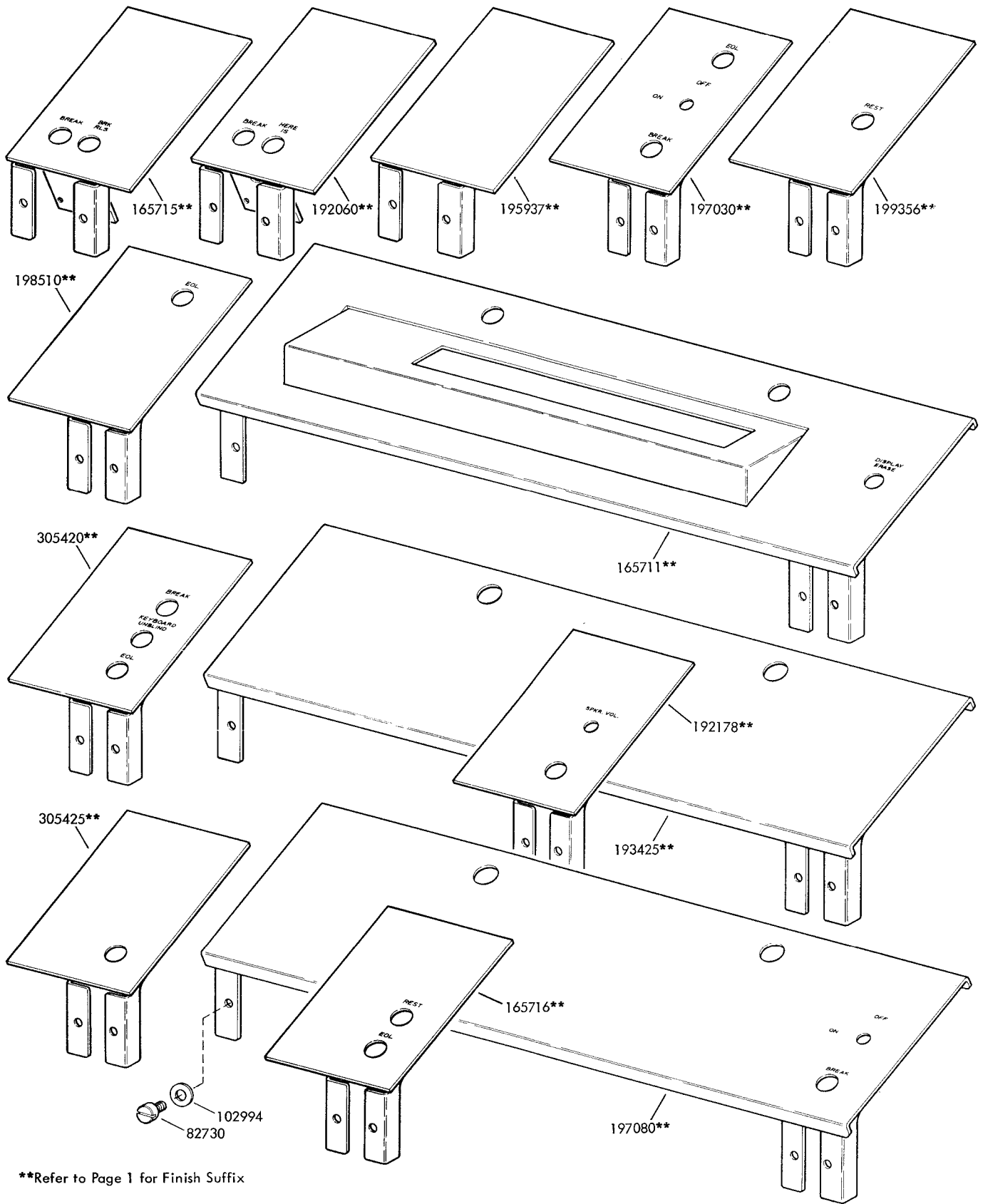


FIGURE 4. LOWER COVER, PAN, PEDESTAL, AND MOUNTING RACK



**Refer to Page 1 for Finish Suffix

FIGURE 5. CONTROL PANELS

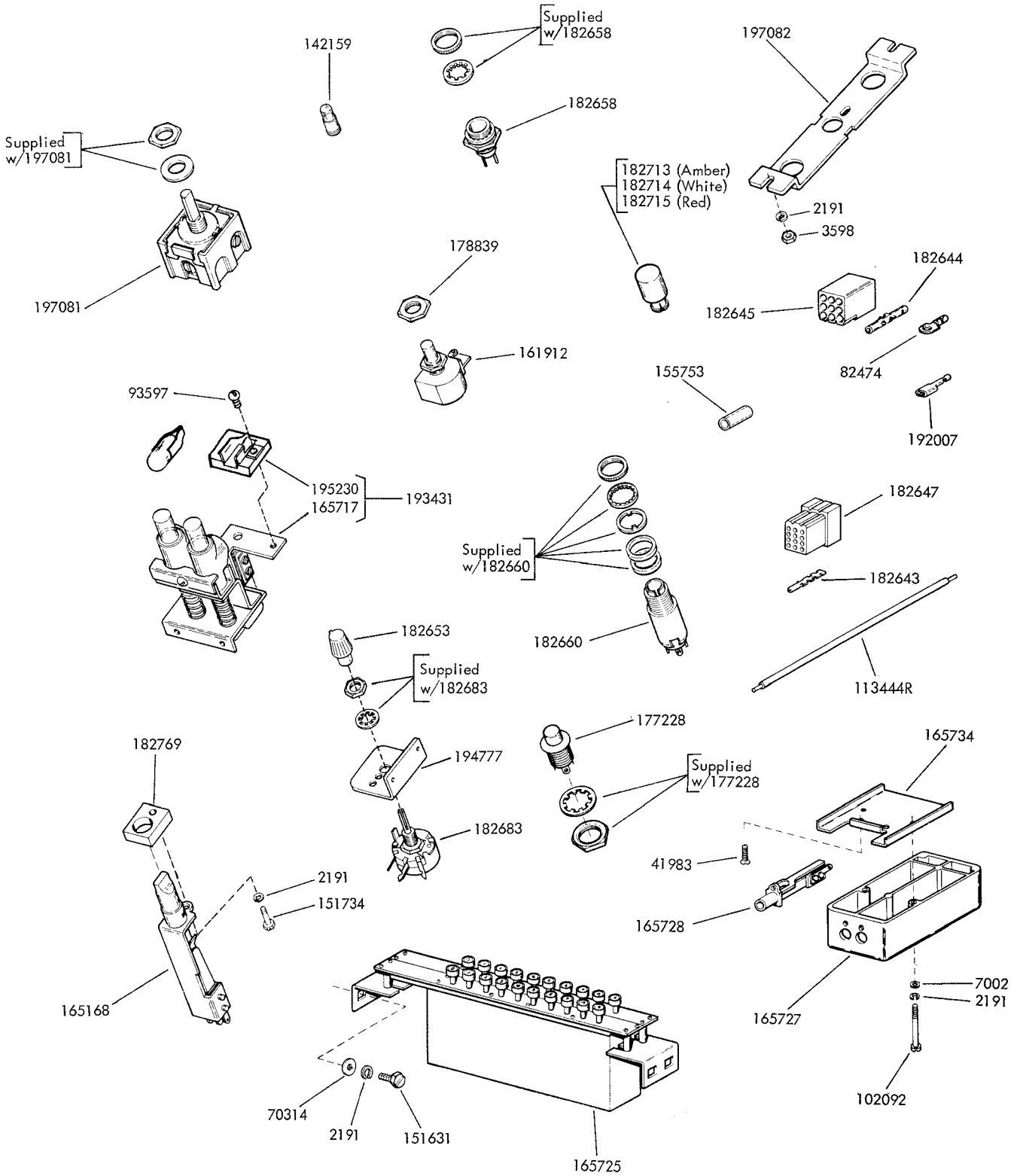


FIGURE 6. CONTROL PANEL COMPONENTS

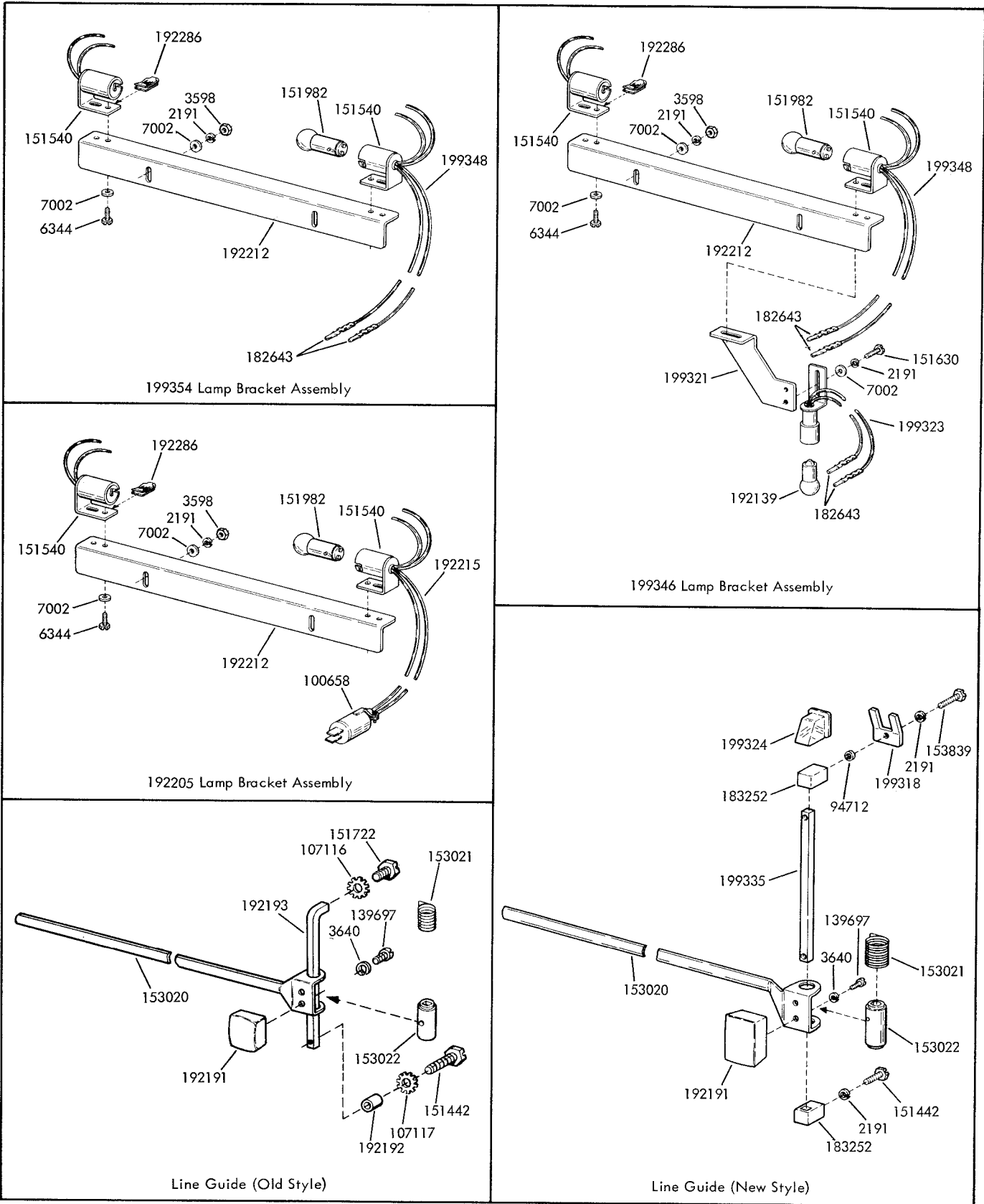
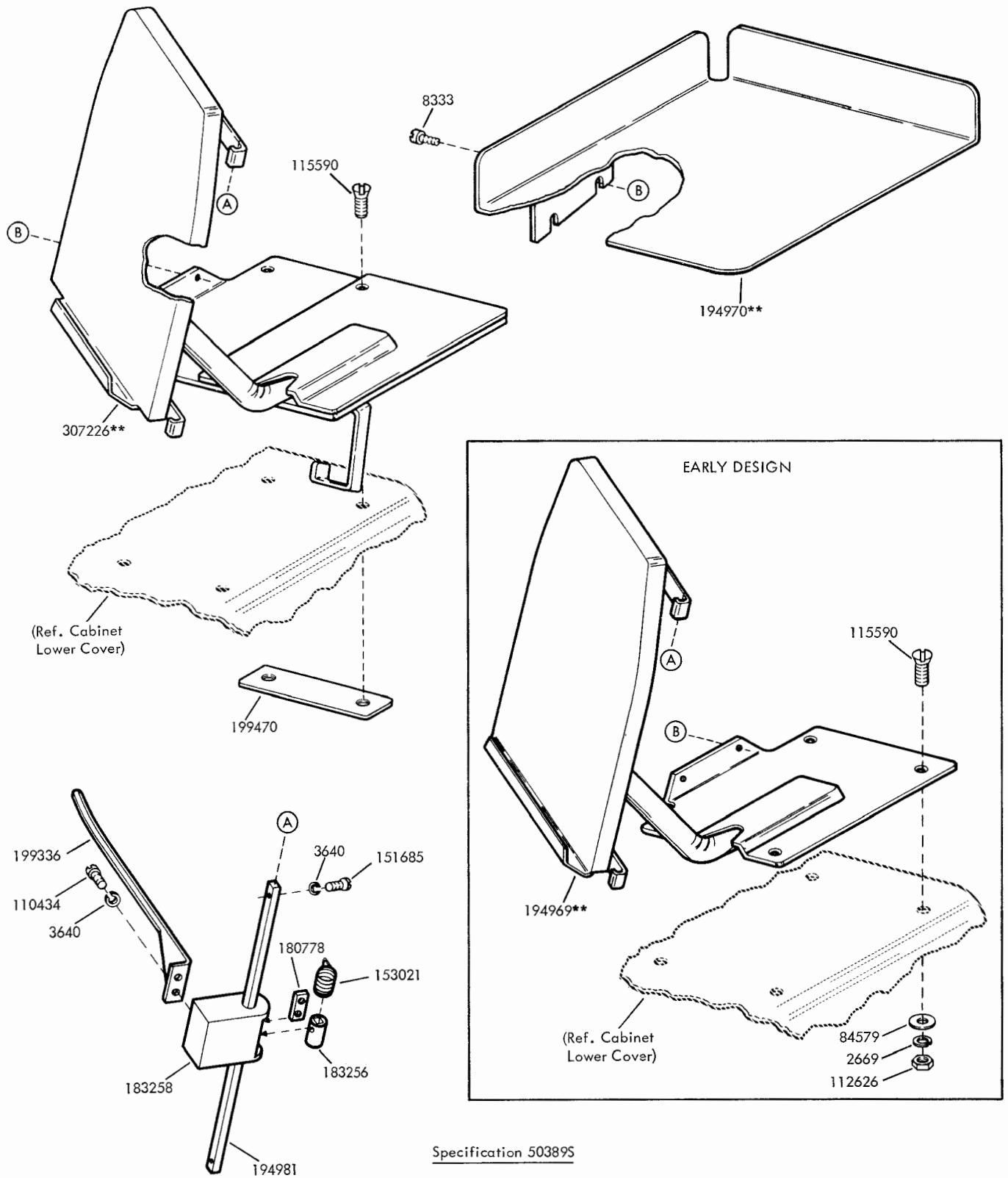
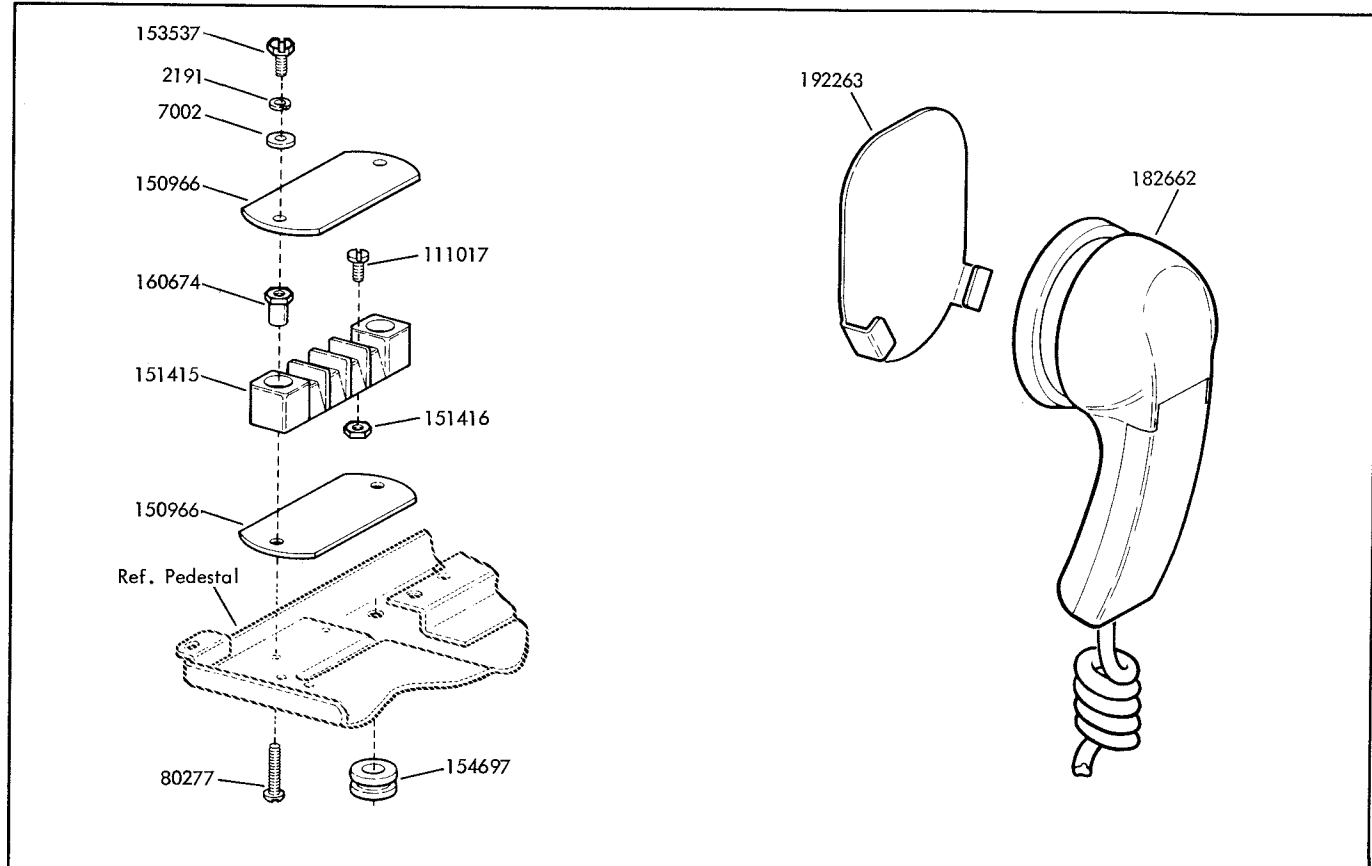


FIGURE 7. LAMP BRACKETS AND LINE GUIDES



**Refer to Page 1 for Finish Suffix

FIGURE 8. 307228** MODIFICATION KIT TO ADD OFFSET COPYHOLDER



195209 Modification Kit to Provide Hand Held Receiver

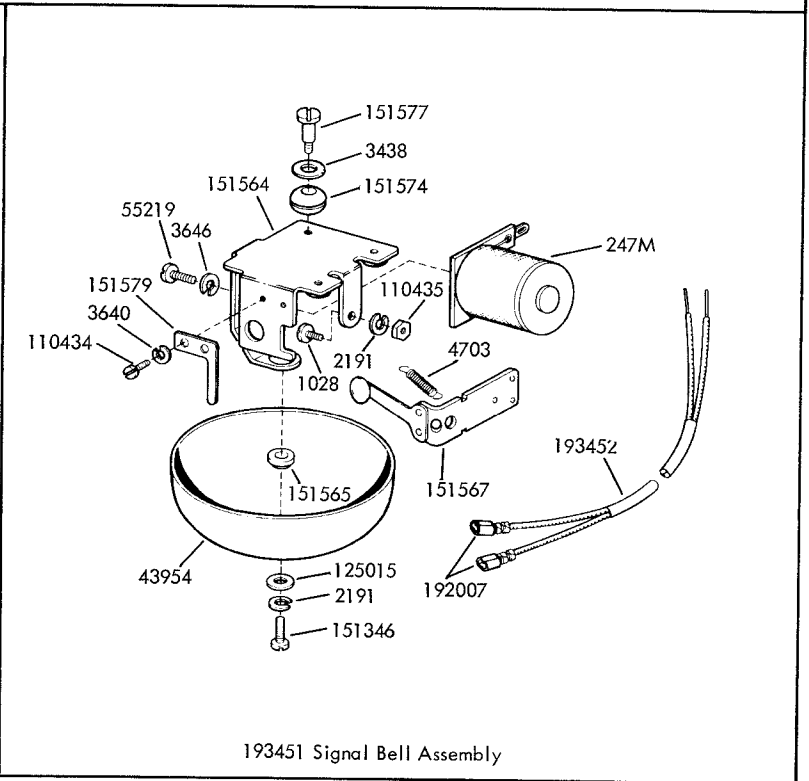
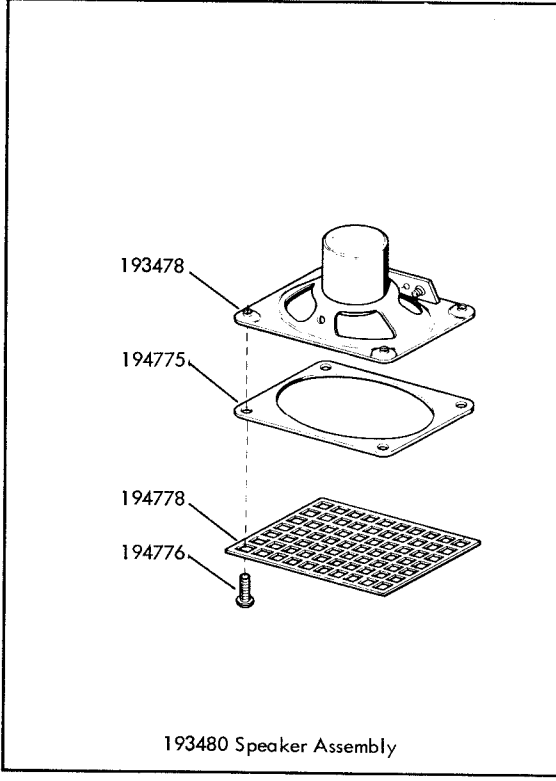


FIGURE 9. SPEAKER, SIGNAL BELL AND HAND HELD RECEIVER

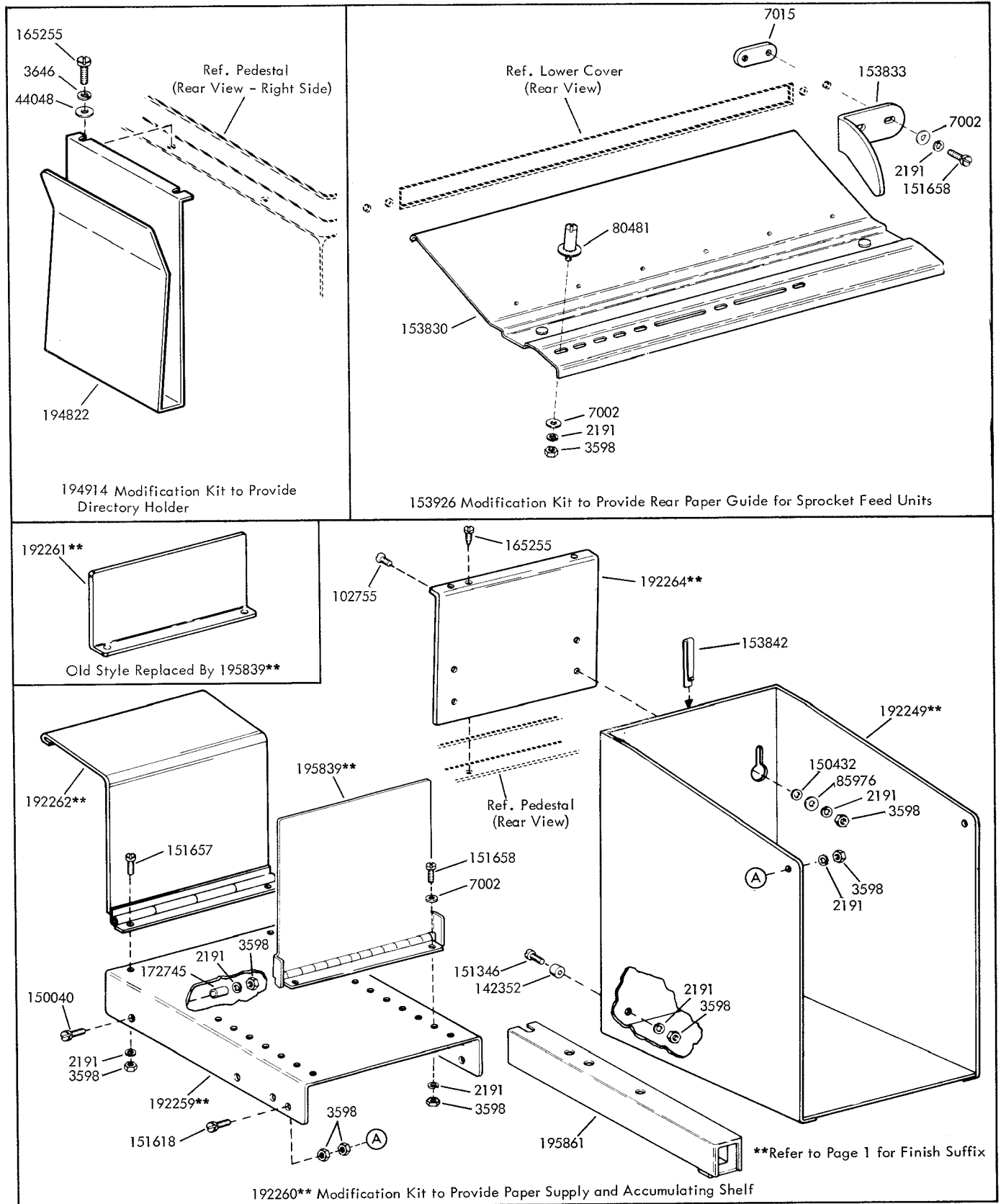


FIGURE 10. PAPER HANDLING AND DIRECTORY HOLDER MODIFICATION KITS

NUMERICAL INDEX

Part Number	Description and Page Number	Part Number	Description and Page Number	Part Number	Description and Page Number
247M	Coil, Magnet 10	139697	Screw (4-40 x 9/32 Fil) 8	181288	Label, White 3
1028	Screw (4-40 x 1/4 Fil) 10	142159	Bulb, Lamp (6V) 7	181289	Window, Plastic 3
1122	Screw (8-32 x 9/32 Flat) 5	142352	Foot, Mounting 11	181292	Window, Plastic 3
2034	Washer, Flat 2	144778	Screw, Self-Tapping (#6) 4	181901**	Faceplate 3
2191	Washer, Lock 2, 7, 8, 10, 11	150040	Screw (6-40 x 5/8 Fil) 11	181902**	Faceplate 3
2449	Washer, Lock 4	150432	Washer, Flat 11	181903**	Faceplate 3
2719	Washer, Flat 5	150966	Insulator (1-4) 10	181904**	Faceplate 3
2669	Washer, Lock 2, 4, 5, 9	151346	Screw (6-40 x 3/8 Fil) 10, 11	181909**	Faceplate 3
2846	Washer, Flat 4, 5	151415	Block, Terminal 10	181910**	Faceplate 3
3438	Washer, Flat 5, 10	151416	Nut (6-40 Hex) 10	181911**	Faceplate 3
3598	Nut (6-40 Hex) 2, 7, 8, 11	151442	Screw (6-40 x 1/2 Hex) 8	181912**	Faceplate 3
3599	Nut (4-40 Hex) 2	151540	Lampholder 8	181913**	Faceplate 3
3640	Washer, Lock 8, 9, 10	151549	Post 4	181914**	Faceplate 3
3646	Washer, Lock 2, 4, 5, 10, 11	151564	Bracket 10	181915**	Faceplate 3
4703	Spring 10	151565	Bushing, Shoulder 10	181921**	Faceplate 3
6344	Screw (6-32 x 11/32 Hex) 8	151567	Armature w/Clapper 10	181922**	Faceplate 3
6970	Nut (3/8-32 Hex) 4	151574	Grommet, Rubber 10	182643	Terminal, Plug Type 7, 8
7002	Washer, Flat 2, 3, 7, 8, 10, 11	151575	Arm, Stop 4	182644	Terminal, Receptacle Type 7
7015	Strip 11	151577	Screw, Shoulder (6-40) 10	182645	Connector, Receptacle Type 7
8333	Screw (10-32 x 3/8 Rd) 9	151579	Plate, Retaining 10	182647	Connector, Plug Type (12 Pt) 7
35826	Washer, Flat 4	151618	Screw (6-40 x 7/16 Fil) 11	182653	Knob 7
41983	Screw (8-32 x 5/8 Flat) 7	151630	Screw (6-40 x 1/4 Hex) 8	182658	Socket, Lamp 7
43954	Bell 10	151631	Screw (6-40 x 5/16 Hex) 2, 7	182660	Switch, Pushbutton 7
44048	Washer, Flat 11	151657	Screw (6-40 x 1/4 Fil) 2, 11	182662	Receiver 10
55219	Screw (8-32 x 3/8 Fil) 10	151658	Screw (6-40 x 5/16 Fil) 11	182683	Resistor (50 Ohm) 7
70314	Washer, Flat 7	151685	Screw (4-40 x 5/16 Fil) 9	182713	Cap, Lens (Amber) 7
70720	Screw, Shoulder (10-32) 2, 4	151722	Screw (6-40 x 3/16 Hex) 2, 8	182714	Cap, Lens (White) 7
74567	Screw (1/4-20 x 33/64 Hex) 4	151725	Screw (10-32 x 3/4 Fil) 2	182715	Cap, Lens (Red) 7
74807	Nut (10-32 Hex) 2, 4	151734	Screw (4-40 x 3/8 Hex) 7	182760	Screw (6-32 Spl) 3
76474	Nut (10-32 Hex) 4, 5	151982	Lamp, Incandescent (6V) 8	182769	Block 7
80277	Screw (6-40 x 9/16 Rd) 10	153017	Nut, Speed 5	183252	Post 8
80481	Screw (6-40 Spl) 11	153020	Guide, Line 8	183256	Bushing 9
82267	Washer, Insulating 4	153021	Spring, Torsion 8, 9	183258	Handle, Copyholder 9
82474	Terminal 7	153022	Bushing 8	192007	Terminal, Tab Type 7, 10
82730	Screw, Shoulder (10-32) 6	153442	Screw (10-32 x 1/2 Hex) 4, 5	192054	Nut, Shoulder (8-32) 5
84579	Washer, Flat 9	153537	Screw (6-40 x 9/32 Hex) 2, 10	192056	Handle 5
85976	Washer, Flat 11	153830	Guide, Rear 11	192058**	Pedestal w/Pan 5
88891	Spring 2	153833	Bracket, Guide 11	192059**	Cover, Lower 2
93597	Screw (4-40 x 3/16 Rd) 7	153839	Screw (6-40 x 5/8 Hex) 8	192060**	Plate, Key 6
94712	Washer, Flat 8	153842	Clip, Paper Holder 11	192061	Bracket, Mounting 4
98718	Washer, Flat 4, 5	153926	Modification Kit 11	192062**	Pan w/Nut 5
100658	Connector, Plug (2 Pt) 8	154409	Plate 4	192063**	Cover, Lower 5
101633	Washer, Flat 2, 4	154697	Grommet, Rubber 10	192064**	Cover, Upper 2
102092	Screw (6-40 x 1-17/32 Rd) 7	155753	Sleeve, Insulating (1/8 ID x 1/2" Lg) 7	192067	Bubble 2
102755	Screw (6-40 x 7/16 Flat) 11	156768	Screw (8-32 x 9/32 Hex) 5	192068	Bracket, Right Pivot
102994	Washer, Flat 6	160664	Pin, Roll 2	192069	Bracket, Left Pivot 2
103092	Connector, Cord 4	160674	Nut, Shoulder (6-40) 10	192070	Guide, Form 2
107116	Washer, Lock 8	161912	Switch (SP-ST) 7	192072**	Pedestal w/Pan 4
107117	Cable 8	165102	Screw (12-24 x 3/8 Rd) 5	192073	Window, Glass 2
110434	Screw (4-40 x 3/16 Fil) 9, 10	165168	Key 7	192074	Foot w/Nut 4
110435	Nut (4-40 Hex) 10	165255	Screw (#8 Spl) 11	192081	Ring 4
110743	Washer, Lock 2	165711**	Plate, Mounting 6	192082	Bushing 4
111017	Screw (6-40 x 5/16 Fil) 10	165715**	Plate, Key 6	192083	Washer, Flat 4
112626	Nut (10-32 Hex) 2, 9	165716**	Plate, Lamp 6	192084	Bracket, Right Rear 4
113444	Jumper (5-1/2" Red) 7	165717	Key Assembly 7	192085	Bracket, Left Rear 4
115590	Screw (10-32 x 1/2 Oval) 9	165725	Key, Locking 7	192103	Window, Plastic 2
116793	Washer, Lock 4	165727	Mounting, Jack 7	192106	Plate, Nut 4
117535	Washer, Flat 4	165728	Jack 7	192107	Plate, Nut 4
119421	Washer, Flat 4	165734	Bracket, Jack Mounting 7	192115	Pad, Upper Cover Front 2
119649	Ring, Retaining 3	172745	Bushing (.406") 11	192135**	Rack, Mounting 5
119904	Spring 4	172824	Foot, Rubber 5	192136**	Rack, Mounting 5
121243	Clamp, Cable (3/16" ID) 2	177228	Switch, Push (Black) 7	192139	Lamp (6V) 8
122476	Screw, Self-Tapping (#6) 4	178707	Bumper, Rubber 2	192149	Plate, Latch 2
124611	Screw (8-32 x 3/8 Hex) 4, 5	178839	Nut (11/32-32 Hex) 7	192150	Bracket 5
124612	Screw (8-32 x 1/2 Hex) 2	180778	Plate 9	192155	Bracket, Right Front 4
125015	Washer, Flat 10	180798	Screw, Self-Tapping (8-32) 4	192156	Bracket, Left Front 4
128913	Screw, Self-Tapping (8-32) 4	181287	Holder, Card 3	192160**	Panel 5
				192161**	Panel 4

** Refer to Page 1 for Finish Suffix

NUMERICAL INDEX (Continued)

Part Number	Description and Page Number	Part Number	Description and Page Number	Part Number	Description and Page Number
192164	Frame 4	194778	Grille, Speaker 10	199261	Plate, Name 5
192166	Bushing 4	194819	Clip, Spring 3	199273	Plate, Name 2
192178**	Plate 6	194822	Holder, Directory 11	199274	Plate, Name 5
192179	Bracket, Mounting 4	194823	Plate, Nut 2	199308	Guide 2
192190	Guide Assembly, Line 8	194902	Bracket, Stop 4	199309	Stud 3
192191	Knob 8	194904	Hinge w/Pin 2	199318	Clamp 8
192192	Bushing 8	194905	Bracket, Hinge 4	199321	Bracket 8
192193	Shaft 8	194911	Washer, Lock 4	199323	Cable Assembly 8
192205	Bracket Assembly, Lamp 8	194912	Screw, Shoulder (10-32) 4	199324	Cover, Lamp 8
192212	Bracket, Lamp 8	194913	Nut, Acorn (10-32) 4	199335	Shaft 8
192215	Cable Assembly 8	194919	Bracket, Latch 4, 11	199336	Guide, Line 9
192249**	Shelf, Paper Box 11	194920	Latch, Lower Cover 4	199337	Retainer 4
192256	Hinge, Left 2	194921	Pin, Stop 4	199346	Bracket Assembly, Lamp 8
192259**	Shelf, Paper 11	194966	Latch, Dome (Right) 2	199348	Cable Assembly 8
192260**	Modification Kit 11	194969**	Copyholder 9	199354	Bracket Assembly, Lamp 8
192261**	Bracket, Backstop 11	194970**	Tray 9	199356**	Plate, Lamp 6
192262**	Plate, Deflector 11	194974	Bracket, Stop 5	199362	Post, Pivot 4, 5
192263	Holder, Handset 10	194980	Latch, Dome (Left) 2	199470	Plate, Nut 9
192264**	Plate, Mounting 11	194981	Shaft, Line Guide 9	301664	Plate, Cover 4
192267	Button 2	194983	Retainer 2	305058	Guide, 9-1/2" Form 2
192270	Bracket 4	194984	Screw (#6 x 1-1/2 Spl) 4	305420**	Plate, Lamp 6
192271	Plate, Nut 4	194985	Clamp 2	305425**	Plate, Lamp 6
192273	Nut, Speed 4	194987	Screw (8-32 x 3/8 Hex) 4	305725	Spring, Stop 4
192274	Screw (8-32 Spl) 4	194988	Screw (10-32 Spl) 2	306670	Guide, 3-5/8" Form 2
192276	Hinge, Right 2	195209	Modification Kit 10	306671	Guide, 4" Form 2
192278	Arm, Right Counterbalance 2	195230	Strip, Lamp 7	306672	Guide, 4-1/4" or 4-5/16" Form 2
192279	Arm, Left Counterbalance 2	195629	Plate 2	306673	Guide, 4-1/2" Form 2
192281	Bracket 4	195839**	Bracket, Backstop 11	306674	Guide, 5" Form 2
192286	Nut, Speed 2, 8	195861	Extension, Foot 11	306675	Guide, 5-1/2" Form 2
192287	Fastener, Pushbutton 4	195872	Label 2	306676	Guide, 5-3/4" Form 2
192288	Nut, Speed (#14) 5	195937**	Plate 6	306677	Guide, 6" Form 2
192289	Screw (1/4-14 Spl) 5	197028	Terminal 4	306678	Guide, 6-1/4" Form 2
192291	Pad, Base 4	197030**	Plate w/Studs 6	306679	Guide, 6-3/8" Form 2
192293	Pad, Lower Cover Side 2, 5	197080**	Plate 6	306680	Guide, 6-1/2" Form 2
192296	Pad, Upper Cover Side 2	197081	Switch (3 Positions) 7	306681	Guide, 7" Form 2
193425**	Plate 6	197082	Bracket, Switch 7	306682	Guide, 7-1/2" Form 2
193431	Key Assembly 7	198510**	Plate w/Studs 6	306683	Guide, 8" Form 2
193451	Bell Assembly, Signal 10	198654	Bracket, Locating 3	306684	Guide, 8-1/2" Form 2
193452	Cable w/Terminals 10	199251	Plate, Name 2	306685	Guide, 9" Form 2
193478	Speaker 10	199252	Plate, Name 5	306731	Gasket 2
193480	Speaker 10	199254	Plate, Name 2	307226**	Copyholder 9
194775	Spacer (.050") 10	199255	Plate, Name 5	307228**	Modification Kit 9
194776	Screw (6-32 Spl) 4, 10	199257	Plate, Name 2	308435	Bracket, Mounting 4
194777	Bracket, Switch 7	199258	Plate, Name 5		
		199260	Plate, Name 2		

** Refer to Page 1 for
Finish Suffix

