

1169B

28 PERFORATOR, NON-TYPING (LPE) AND TYPING (LTPE)

PARTS

| FIGURE | CONTENTS | PAGE | FIGURE | CONTENTS | PAGE |
|--------|--|------|--------|--|------|
| 1 | Frame Mechanism (Typing Perforator) | 2 | 21 | Typing Mechanism | 21 |
| 2 | Frame Mechanism (Typing Perforator) | 3 | 22 | Tape Depressor Mechanism | 22 |
| 3 | Frame Mechanism (Non-Typing Perforator) | 4 | 23 | 159364 Modification Kit to Add Power Drive to Backspace | 23 |
| 4 | Frame Mechanism (Non-Typing Perforator) | 5 | 24 | 159379 Modification Kit to Add "Make Only" Code Reading Contacts | 24 |
| 5 | Frame and Motor Mounting Parts (Non-Typing Perforator) | 6 | 25 | 160881 Modification Kit to Add Guard to Cover Backspace Mechanism | 24 |
| 6 | Main Shaft Mechanism (Typing Perforator) | 7 | 26 | 178917 Modification Kit to Provide Backspace Mechanism for Fully Perforated Tape and Printing Between Feed Holes | 25 |
| 7 | Main Shaft Mechanism (Non-Typing Perforator) | 8 | 27 | 178918 Modification Kit to Provide Guard for Backspace Mechanism | 25 |
| 8 | Punch Rear Plate Mechanism | 9 | 28 | 159381 and 159382 Modification Kits to Add Auxiliary Timing Contacts | 26 |
| 9 | 159363 and 172640 Modification Kit to Add Manual Backspace | 9 | 29 | 161340 Modification Kit to Add Manual Interfering Letters Tape Feed-Out | 27 |
| 10 | Punch Block Assemblies | 10 | 30 | 161341 Modification Kit to Add Solenoid Operation to Letters Feed-Out | 27 |
| 11 | Punch Front Plate Mechanism | 11 | 31 | 159360 Modification Kit to Add Signal Bell Contact (On Upper Case "S") | 28 |
| 12 | Punch Bail Mechanism | 12 | 32 | 162375 Modification Kit to Add "Unshift on Space" | 28 |
| 13 | Rotary Positioning Mechanism | 13 | 33 | Typewheel | 29 |
| 14 | Rotary Positioning Mechanism | 14 | | Numerical Index | 30 |
| 15 | Axial Positioning Mechanism | 15 | | | |
| 16 | Axial Positioning Mechanism | 16 | | | |
| 17 | Function Box Mechanism | 17 | | | |
| 18 | Transfer Mechanism | 18 | | | |
| 19 | Ribbon Feed Mechanism (Early Design) | 19 | | | |
| 20 | Ribbon Feed Mechanism (Later Design) | 20 | | | |

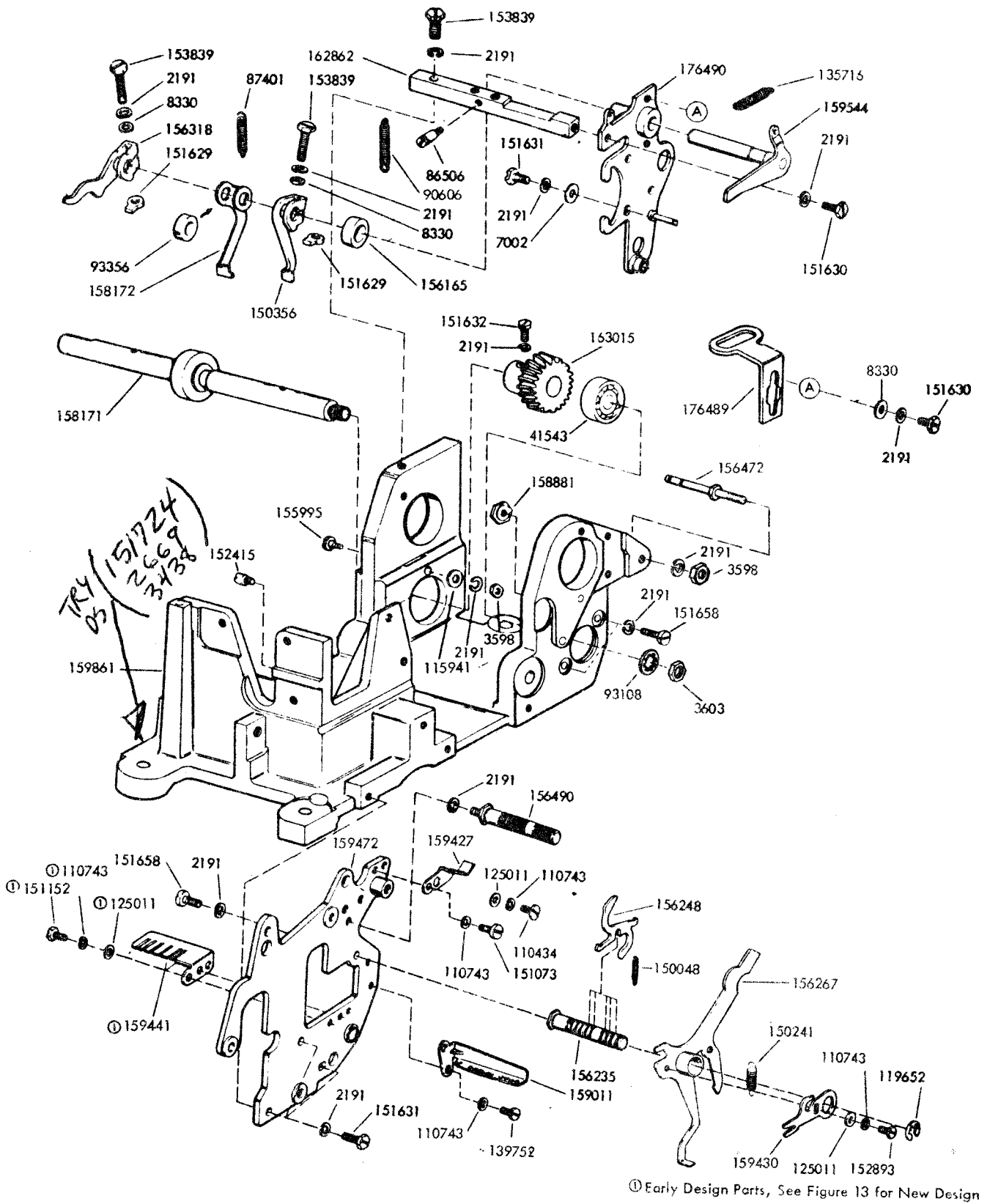
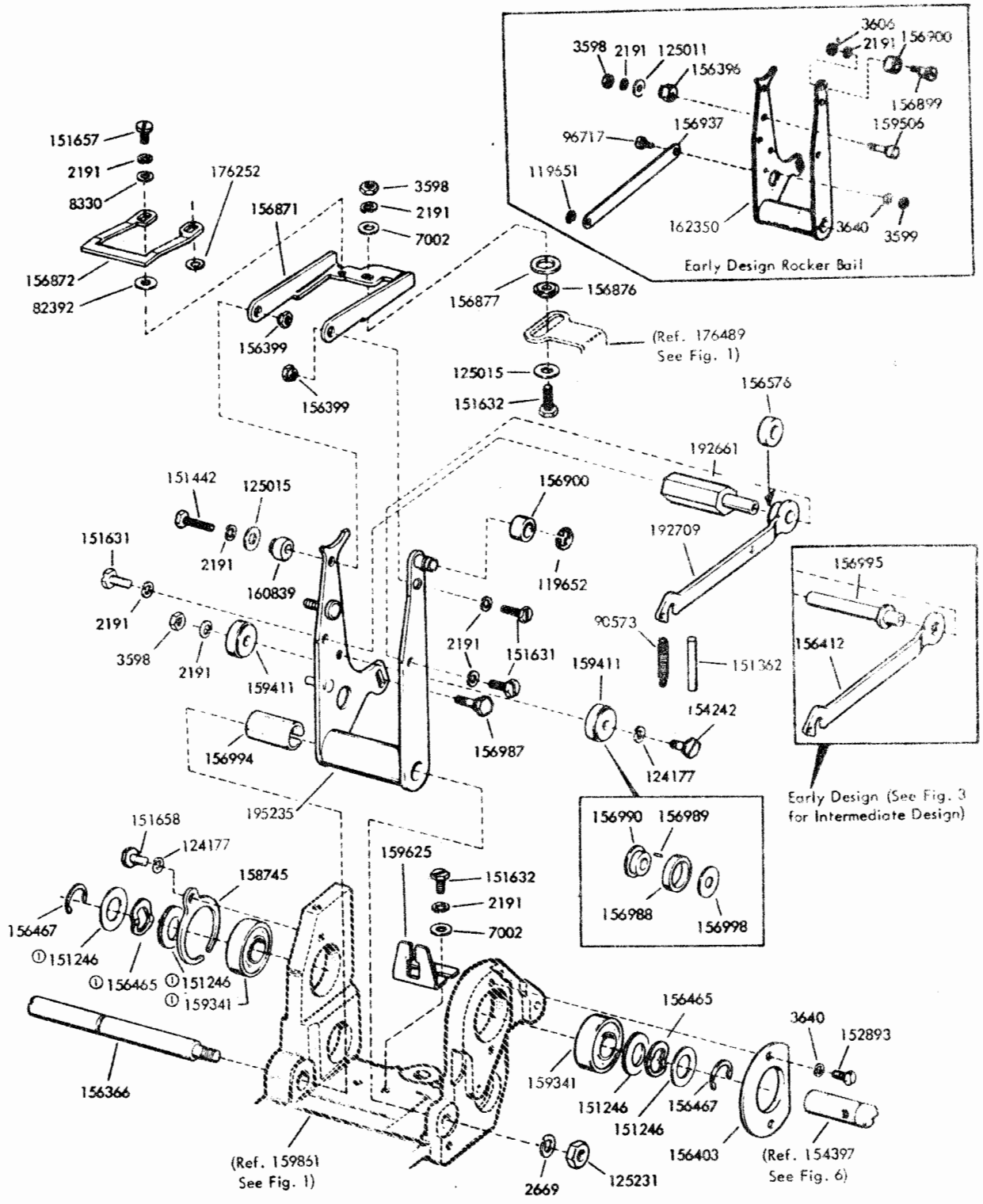


FIGURE 1. FRAME MECHANISM (TYPING PERFORATOR)



Ⓢ These parts are not required with the later design shaft (154397). See Figure 6.

FIGURE 2. FRAME MECHANISM (TYPING PERFORATOR)

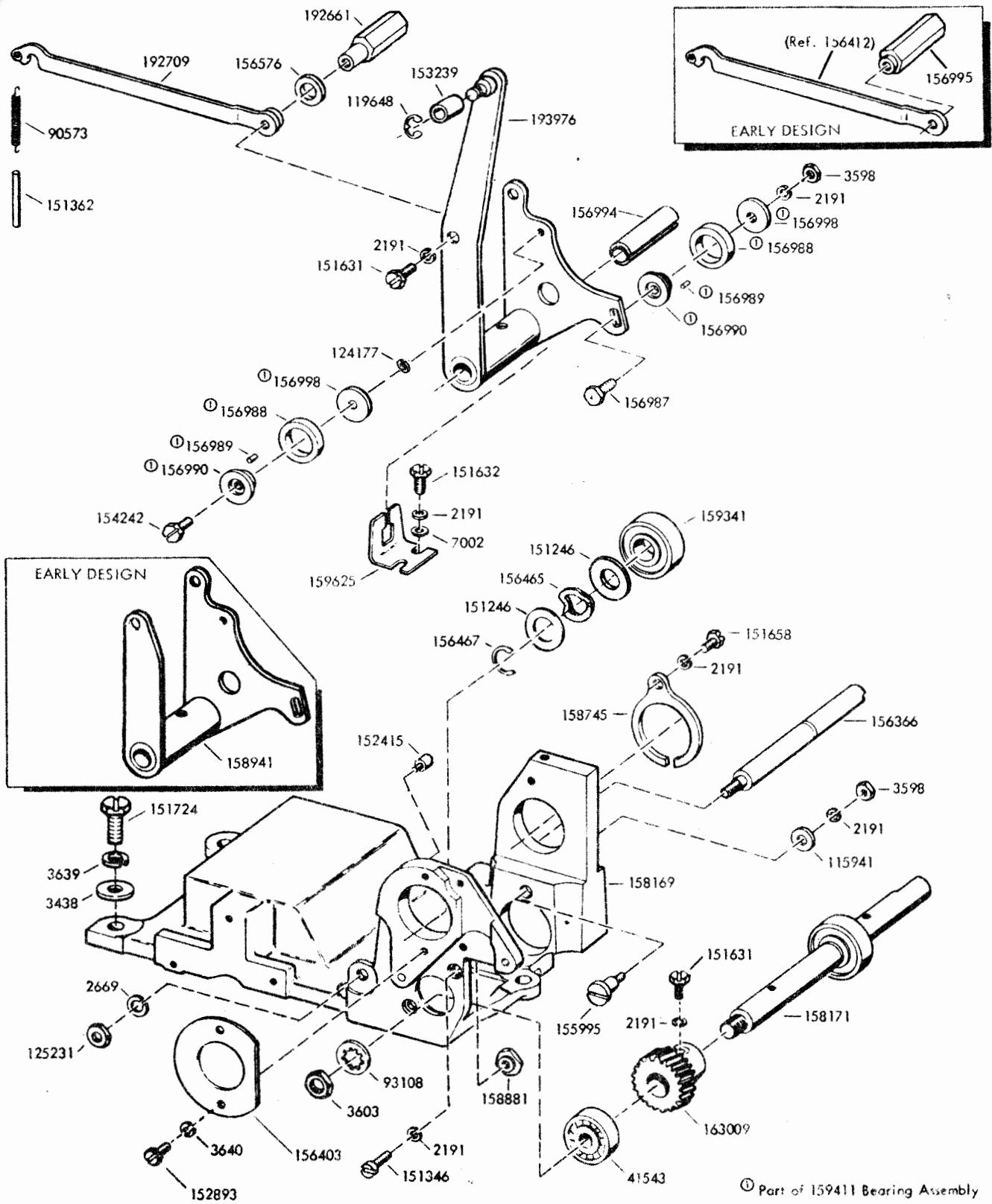


FIGURE 3. FRAME MECHANISM (NON-TYPING PERFORATOR)

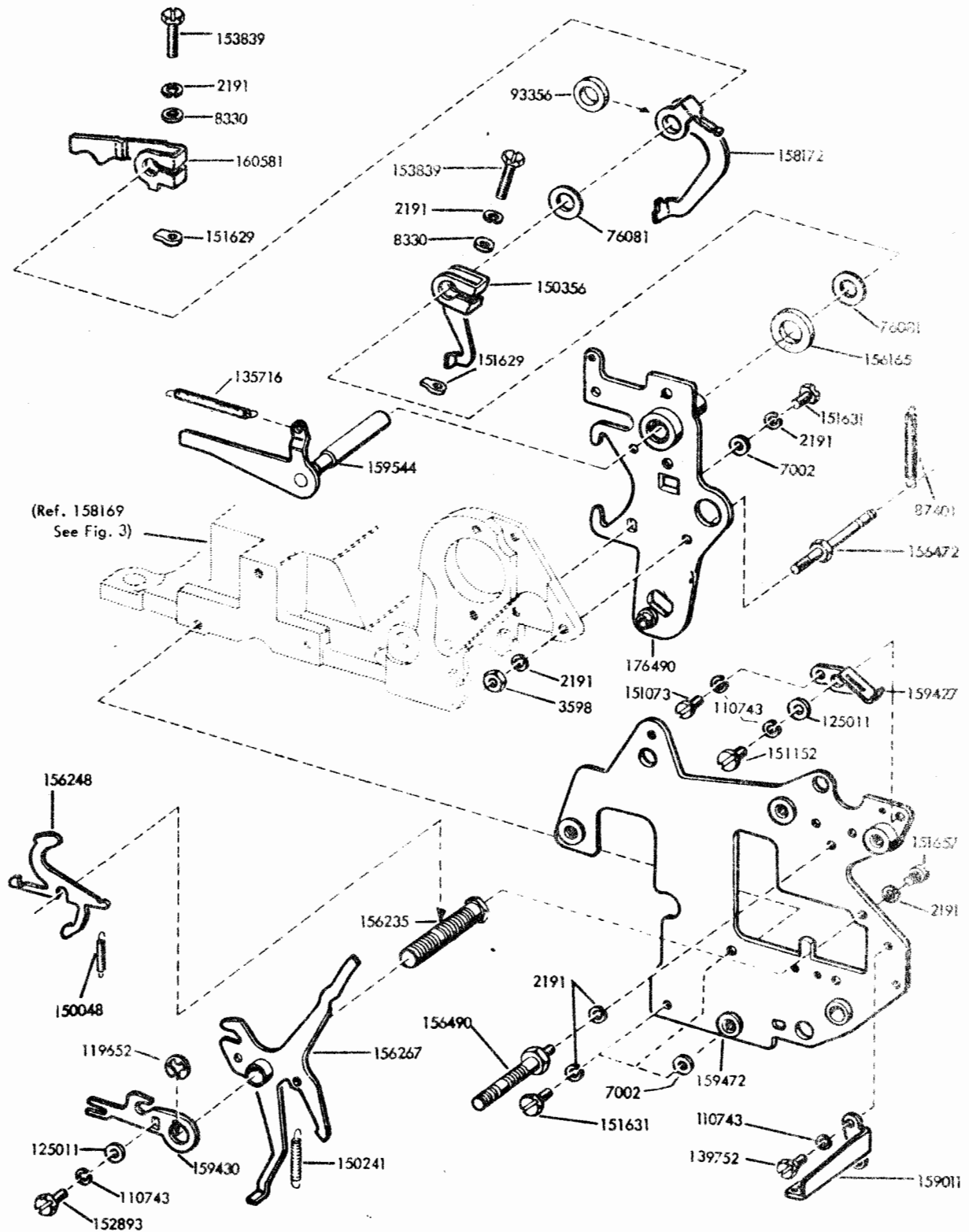
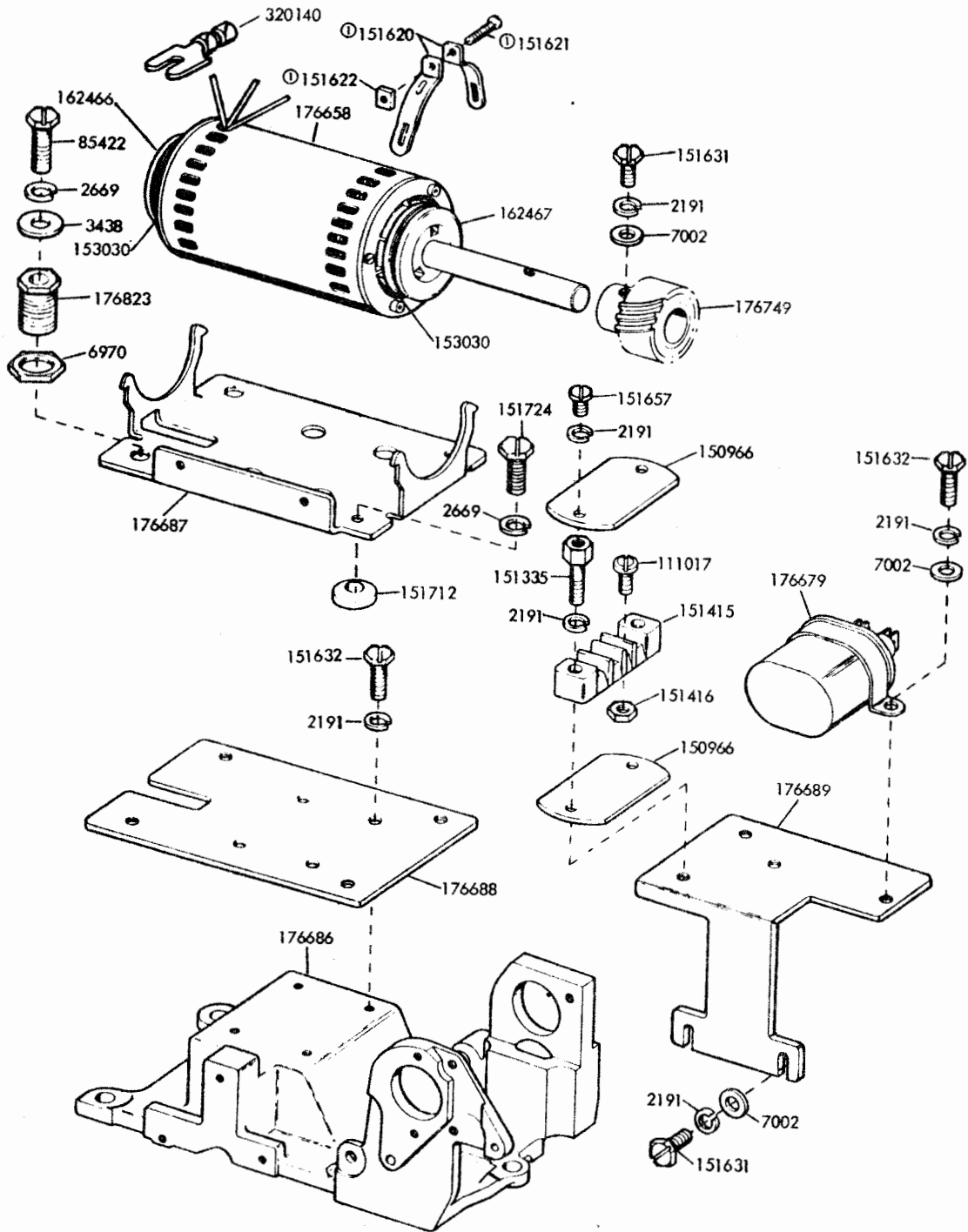


FIGURE 4. FRAME MECHANISM (NON-TYPING PERFORATOR)



①22207 Strap Assembly

FIGURE 5. FRAME AND MOTOR MOUNTING PARTS (NON-TYPING PERFORATOR)

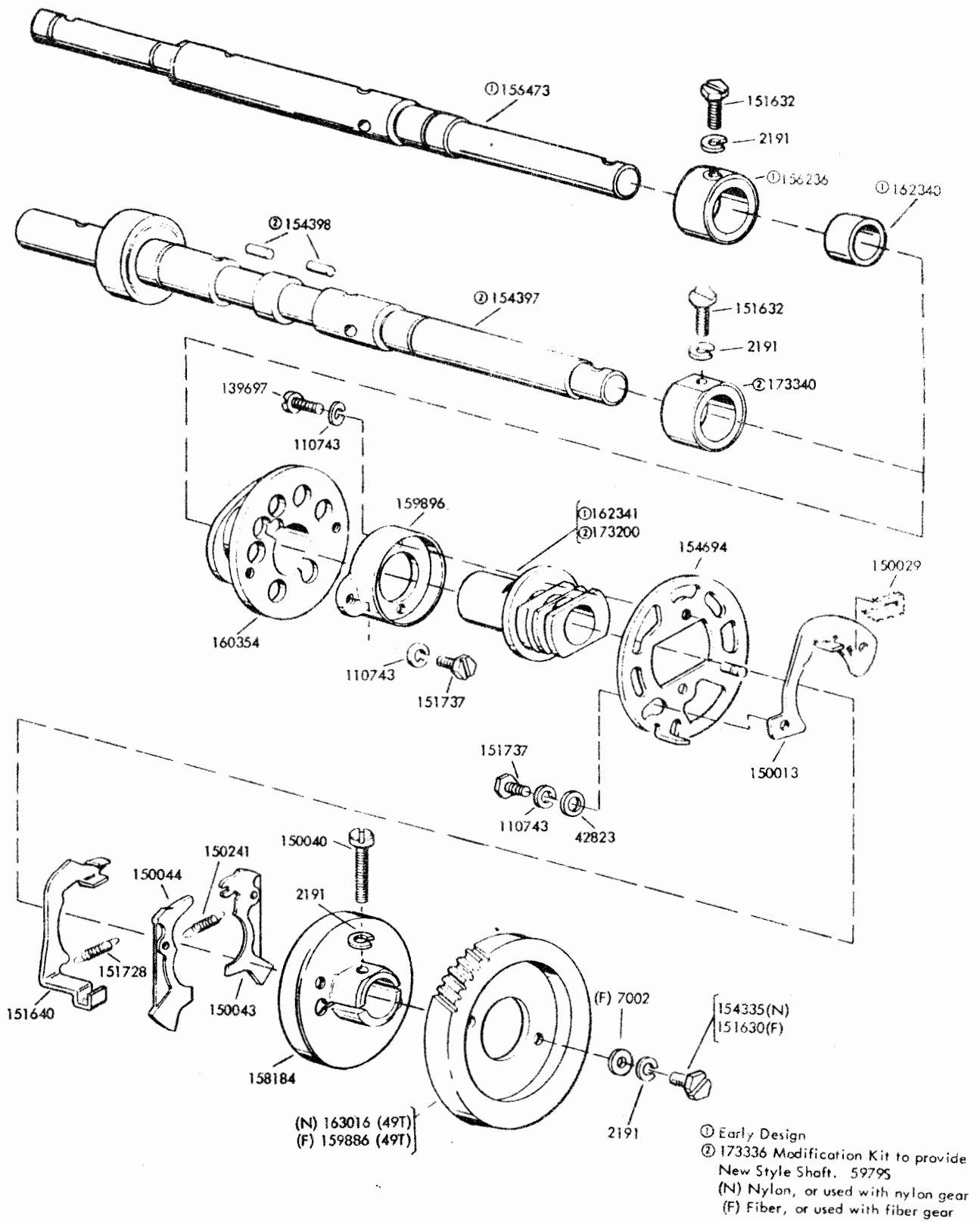


FIGURE 6. MAIN SHAFT MECHANISM (TYPING PERFORATOR)

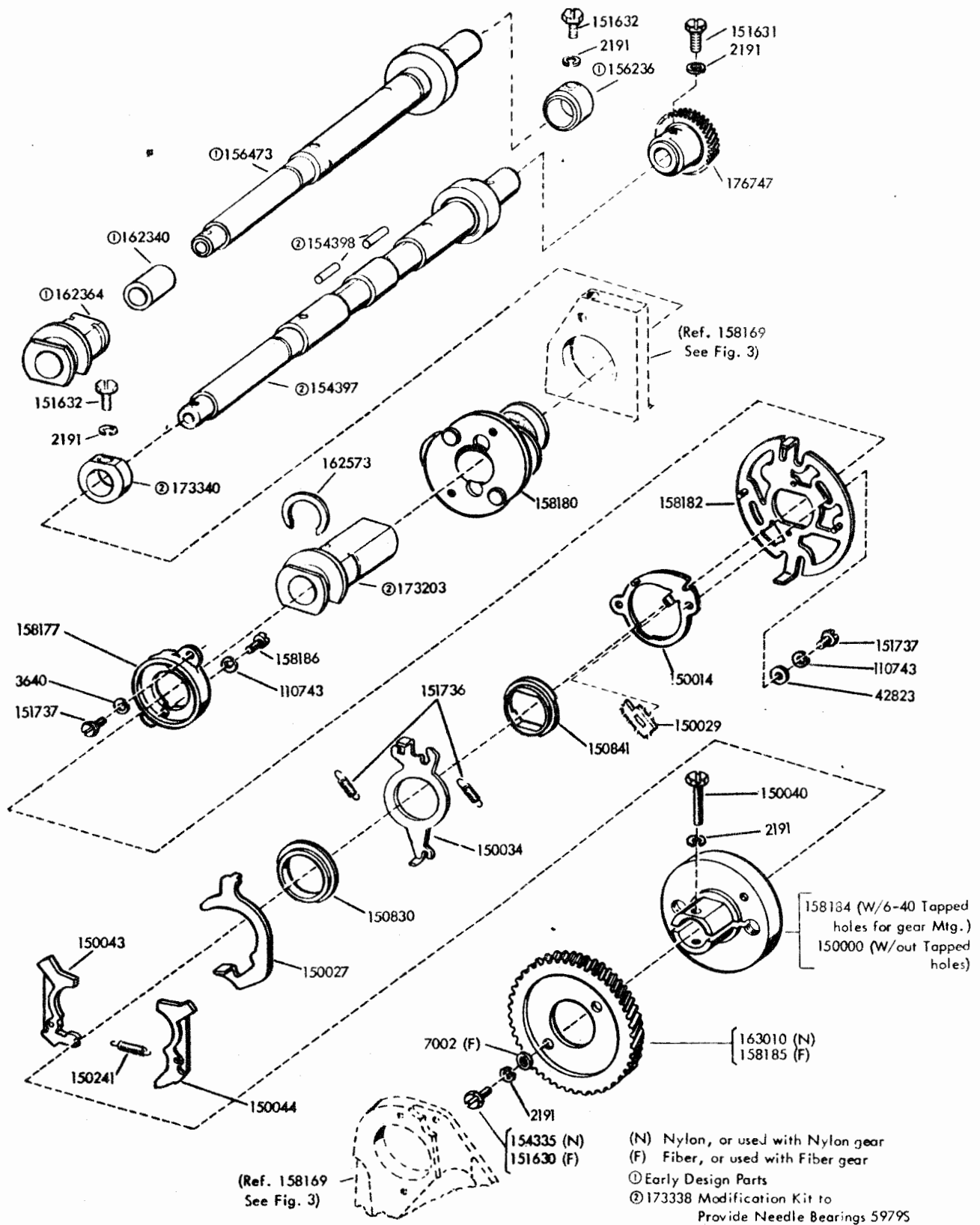


FIGURE 7. MAIN SHAFT MECHANISM (NON-TYPING PERFORATOR)

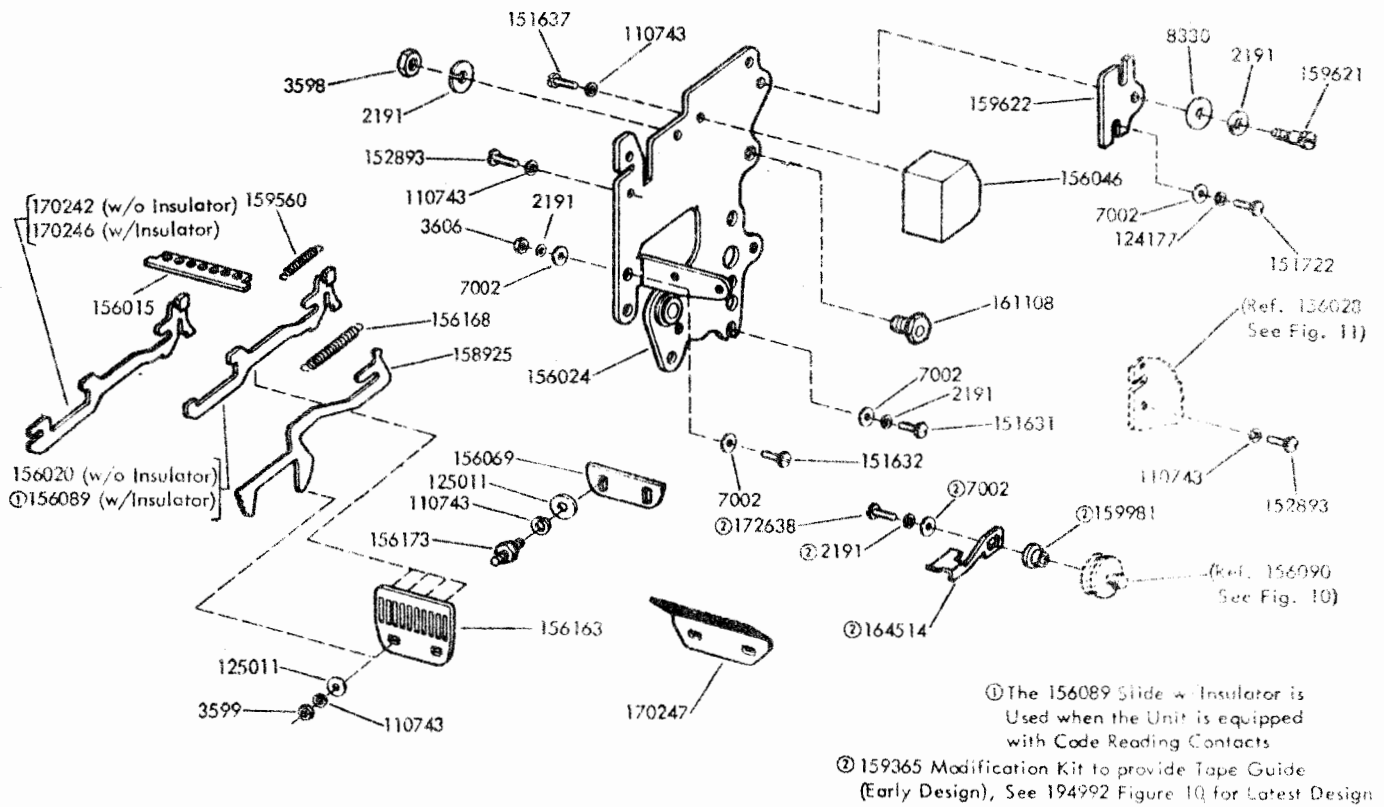


FIGURE 8. PUNCH REAR PLATE MECHANISM

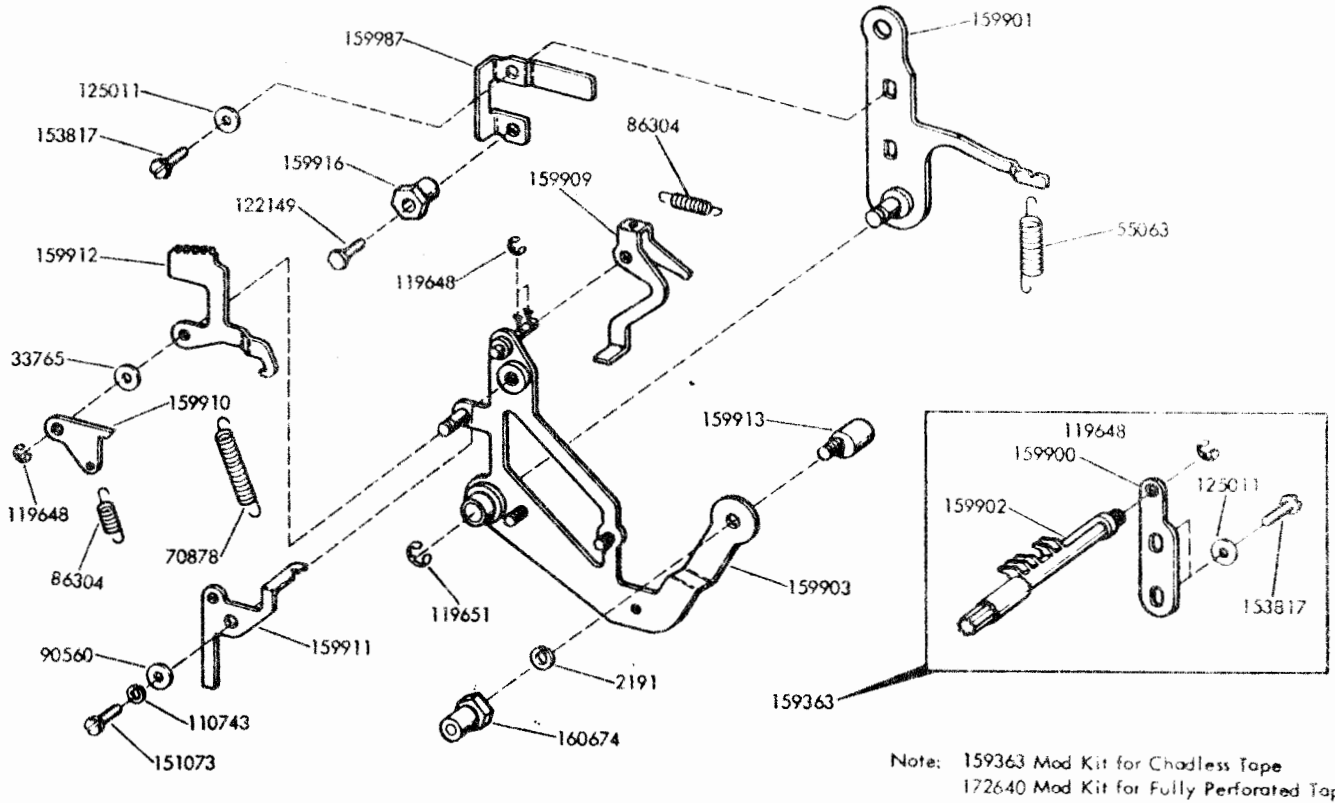


FIGURE 9. 159363 AND 172640 MODIFICATION KIT TO ADD MANUAL BACKSPACE

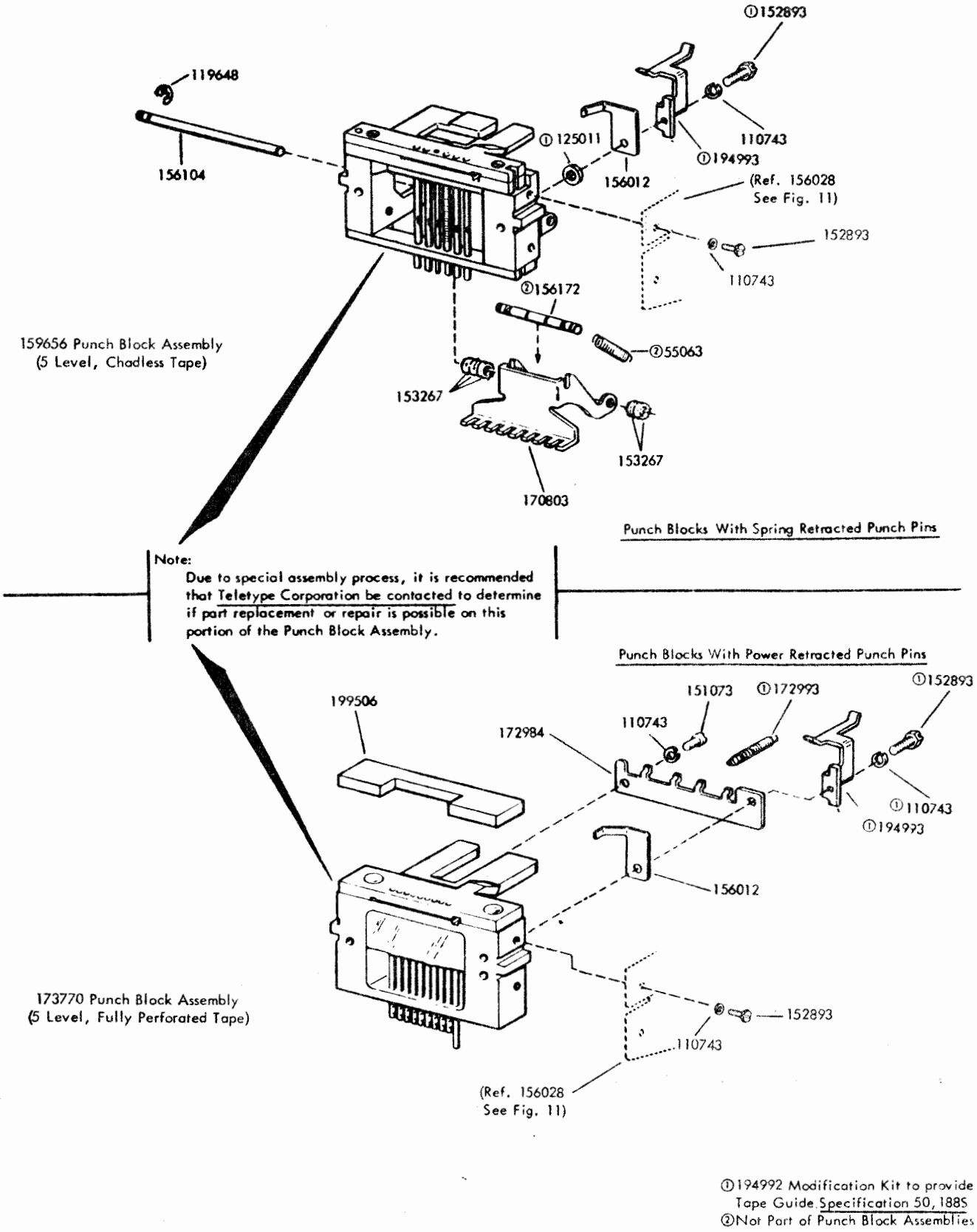
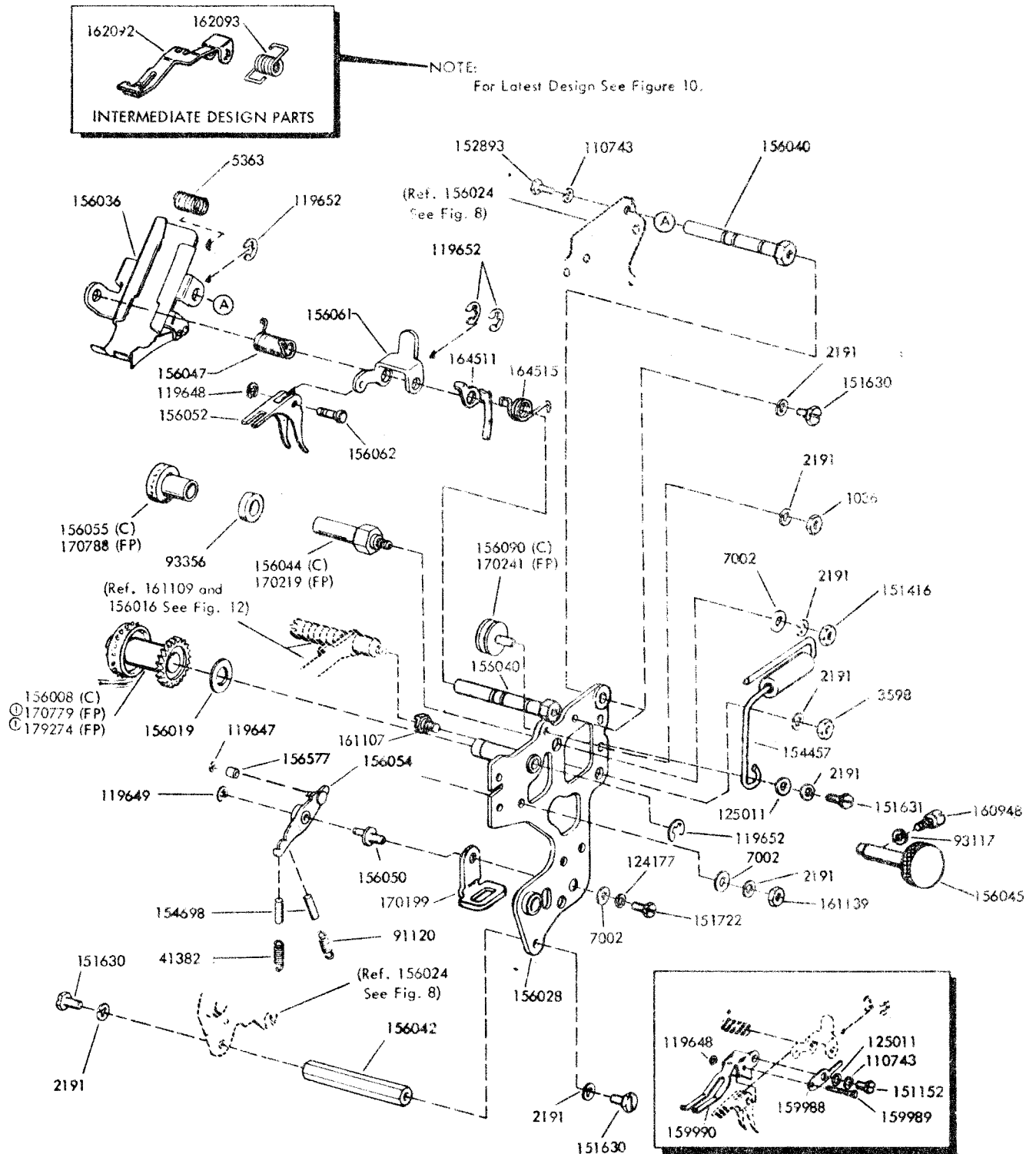


FIGURE 10. PUNCH BLOCK ASSEMBLIES



① When used with the 170778 punch block assembly the 170779 feed wheel produces tape with the feed hole indent punched out. The 179274 feed wheel places the indent between the feed holes and is identified by a black dot on the shank.

(C) Chadless Tape
(FP) Fully Perforated Tape

FIGURE 11. PUNCH FRONT PLATE MECHANISM

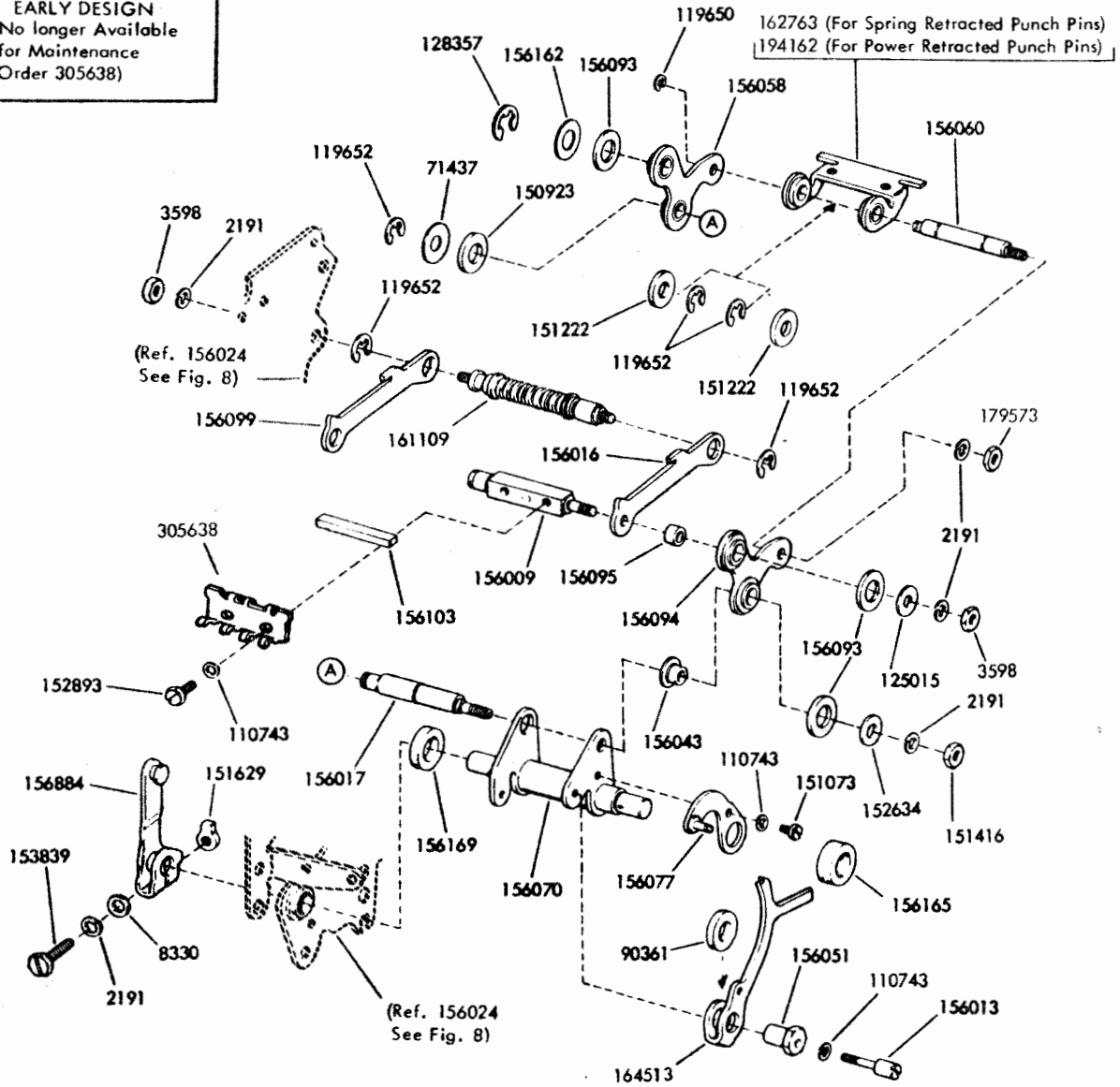
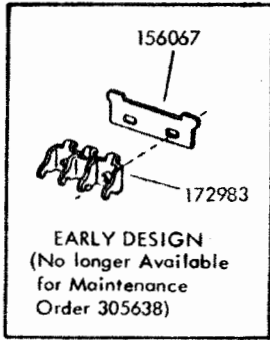
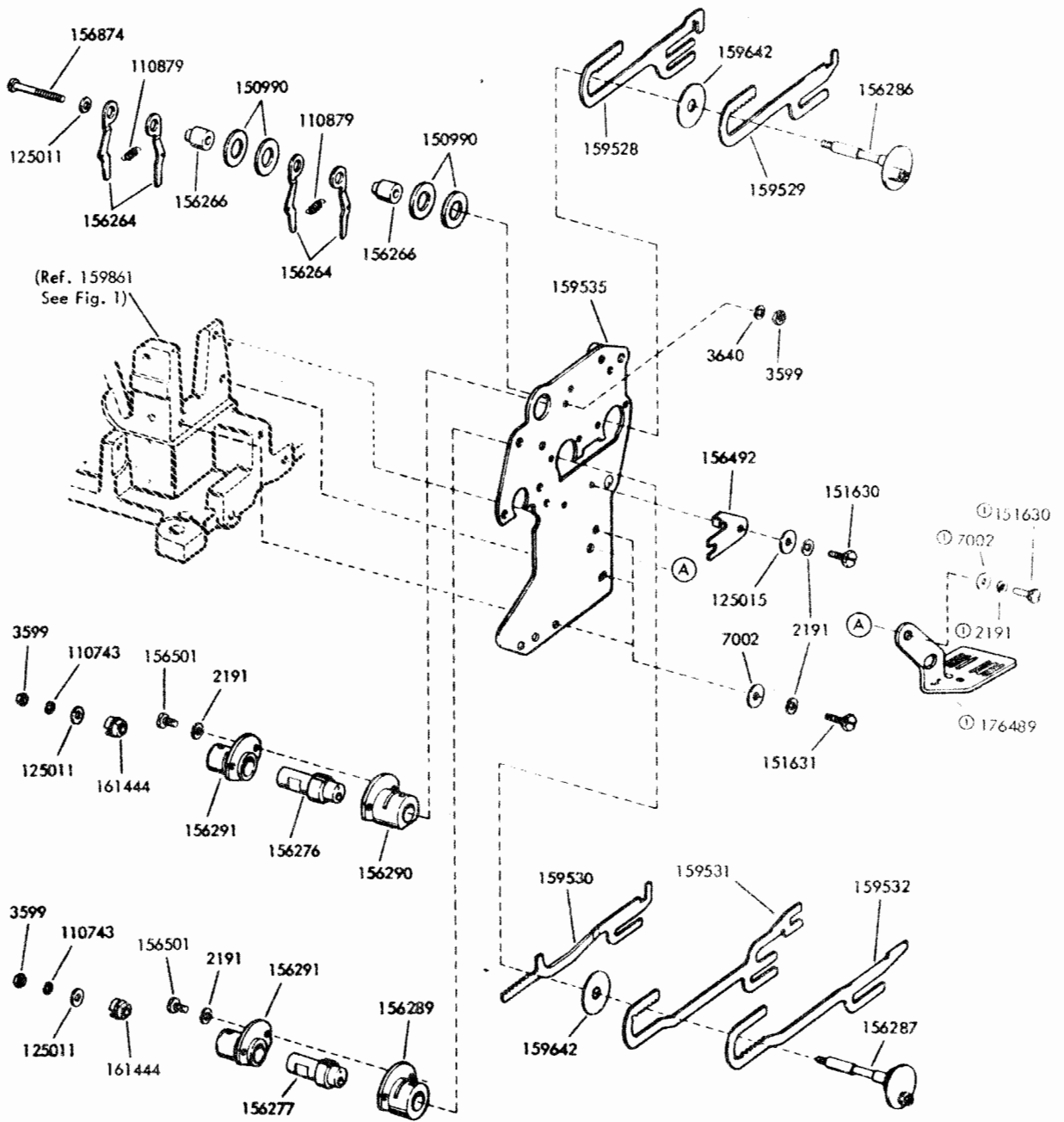


FIGURE 12. PUNCH BAIL MECHANISM



ⓐNew Design Parts, See Figure 1 for Early Design

FIGURE 13. ROTARY POSITIONING MECHANISM

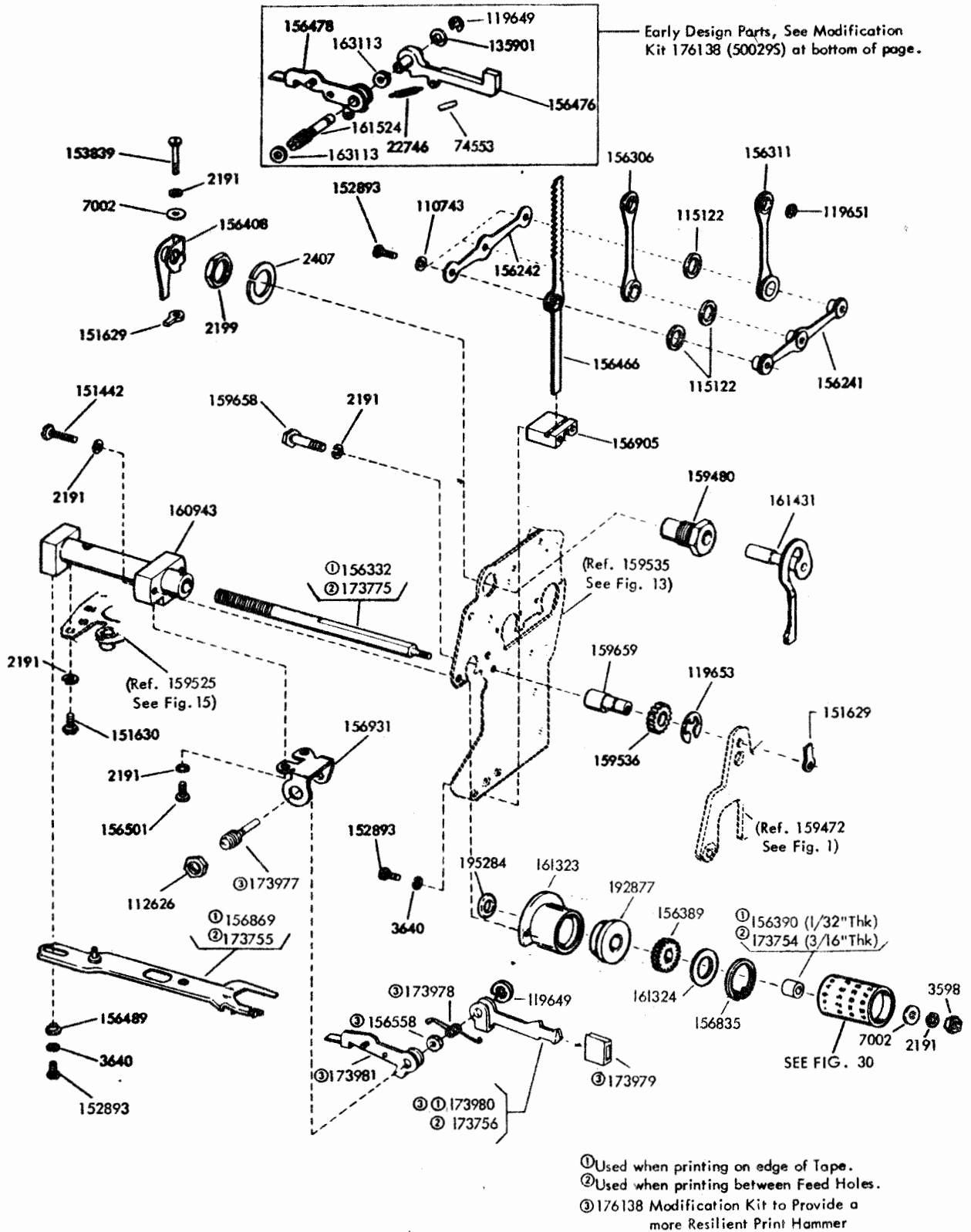


FIGURE 14. ROTARY POSITIONING MECHANISM

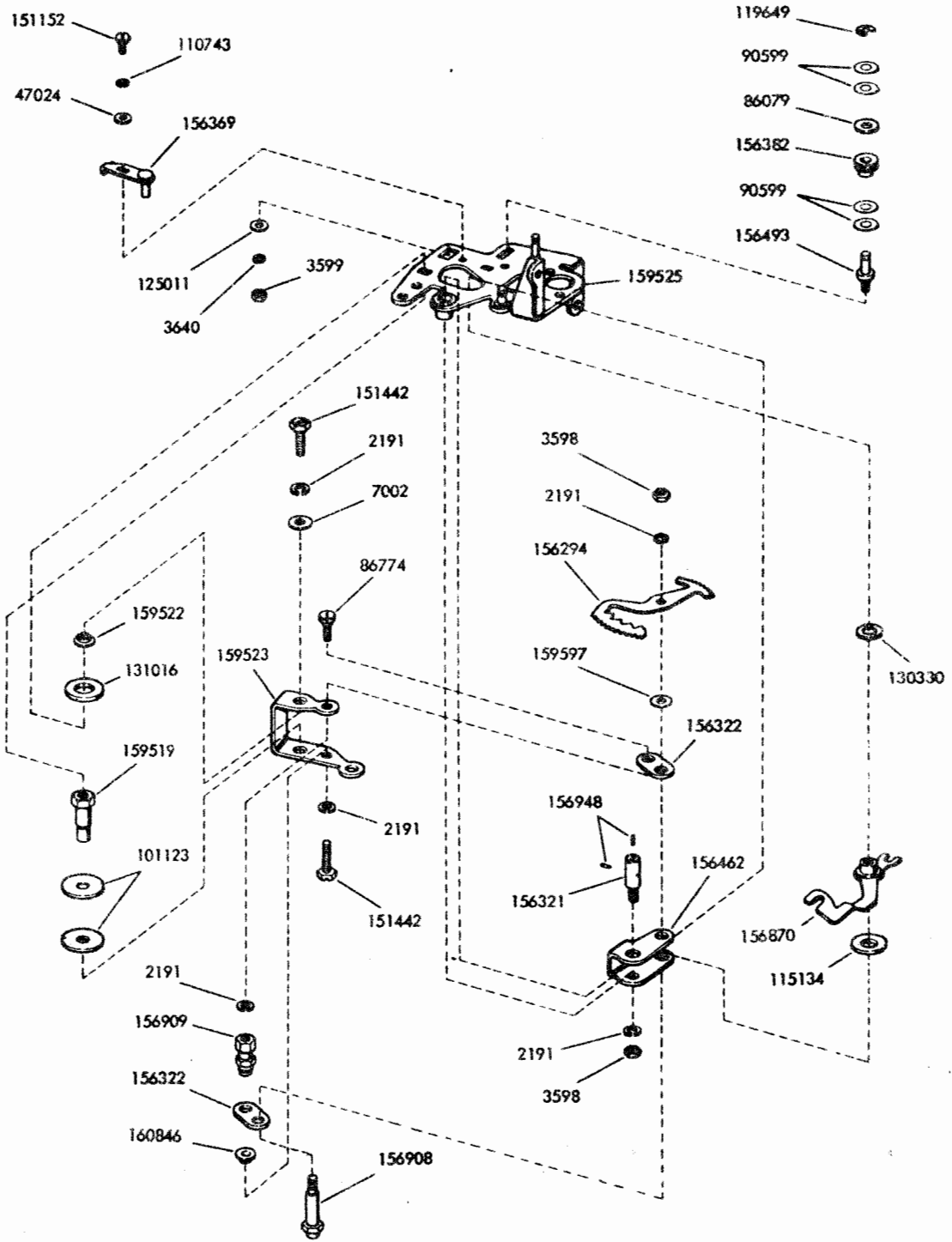
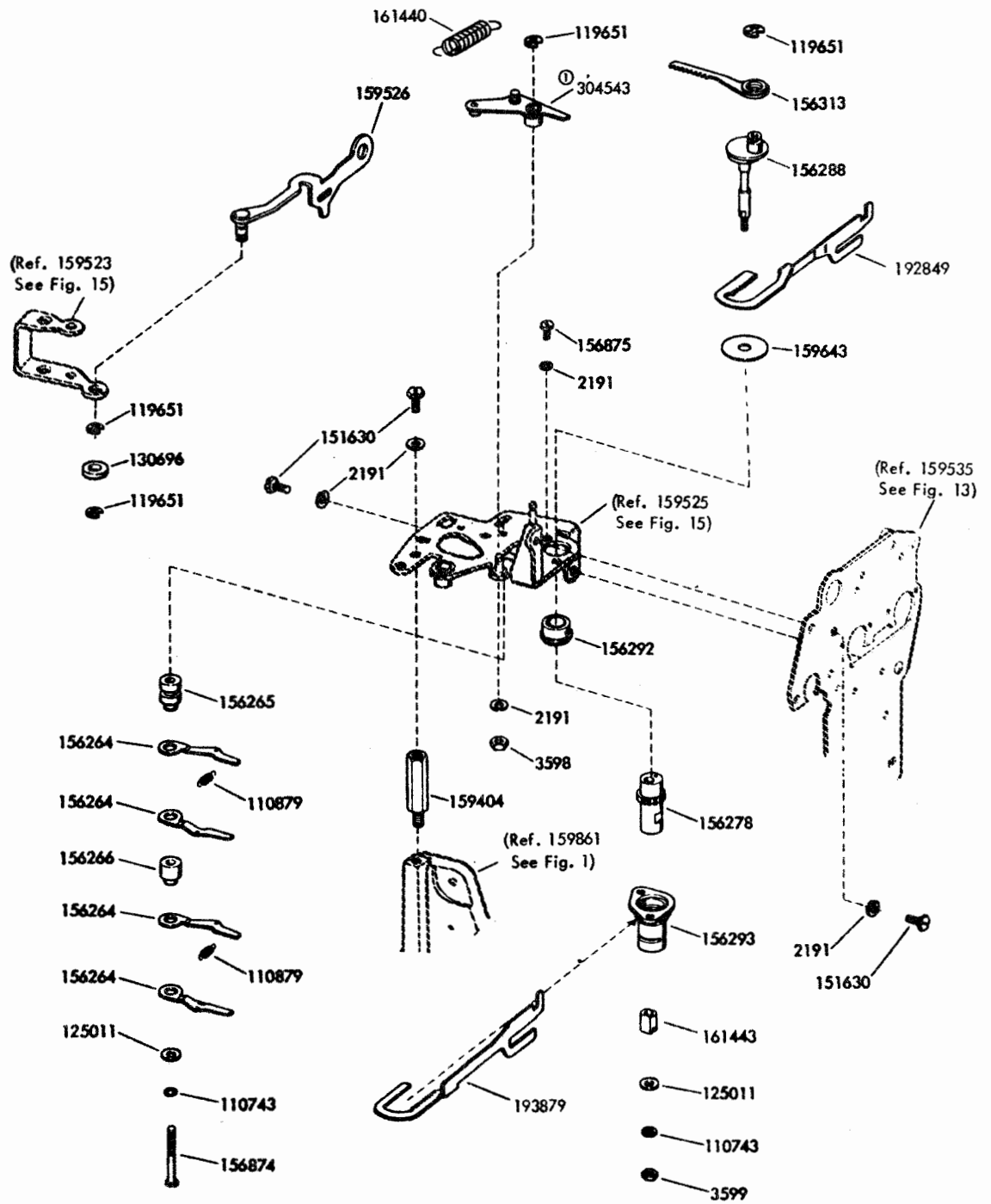


FIGURE 15. AXIAL POSITIONING MECHANISM



⓪ Early Design Parts

FIGURE 16. AXIAL POSITIONING MECHANISM

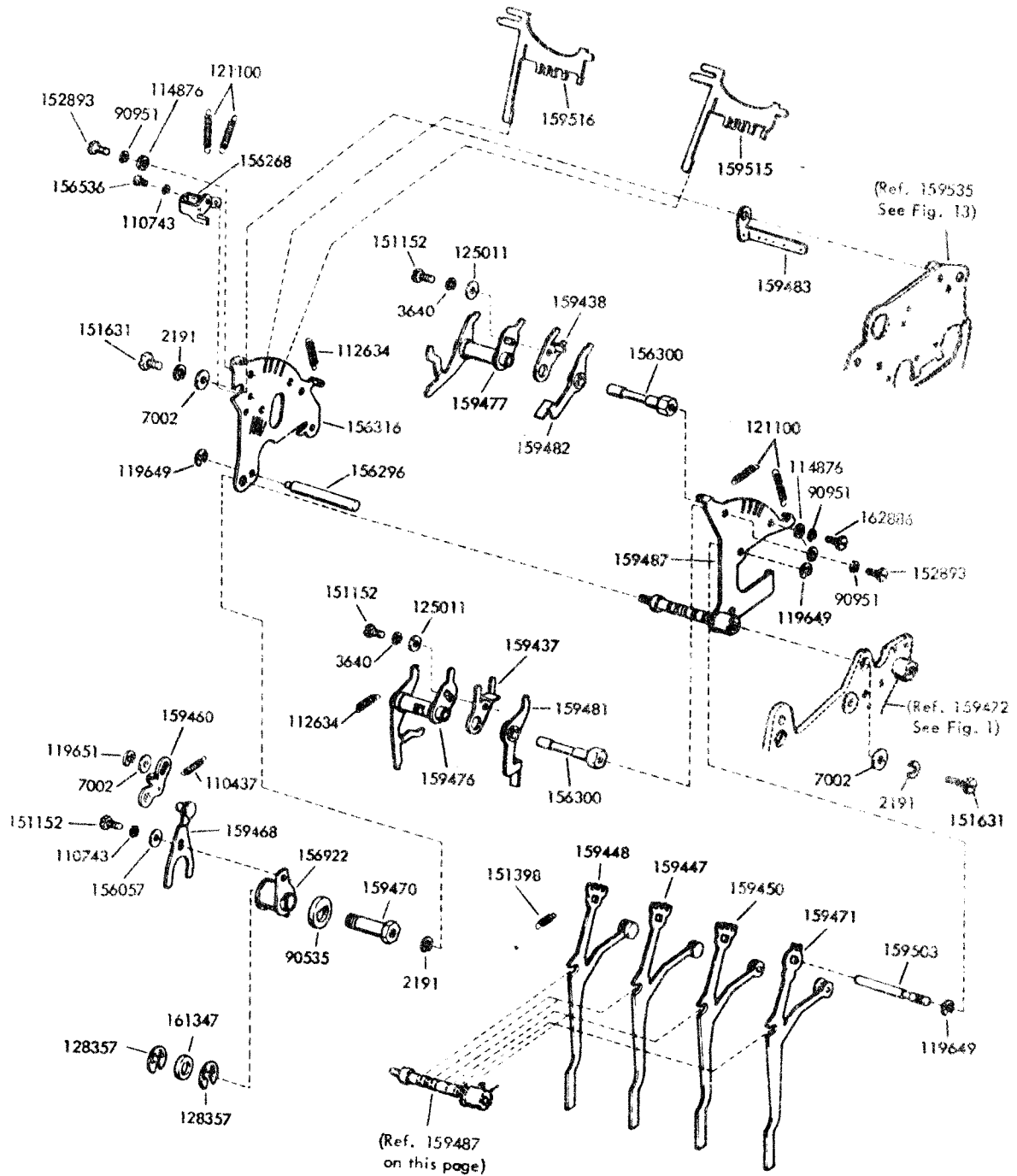


FIGURE 17. FUNCTION BOX MECHANISM

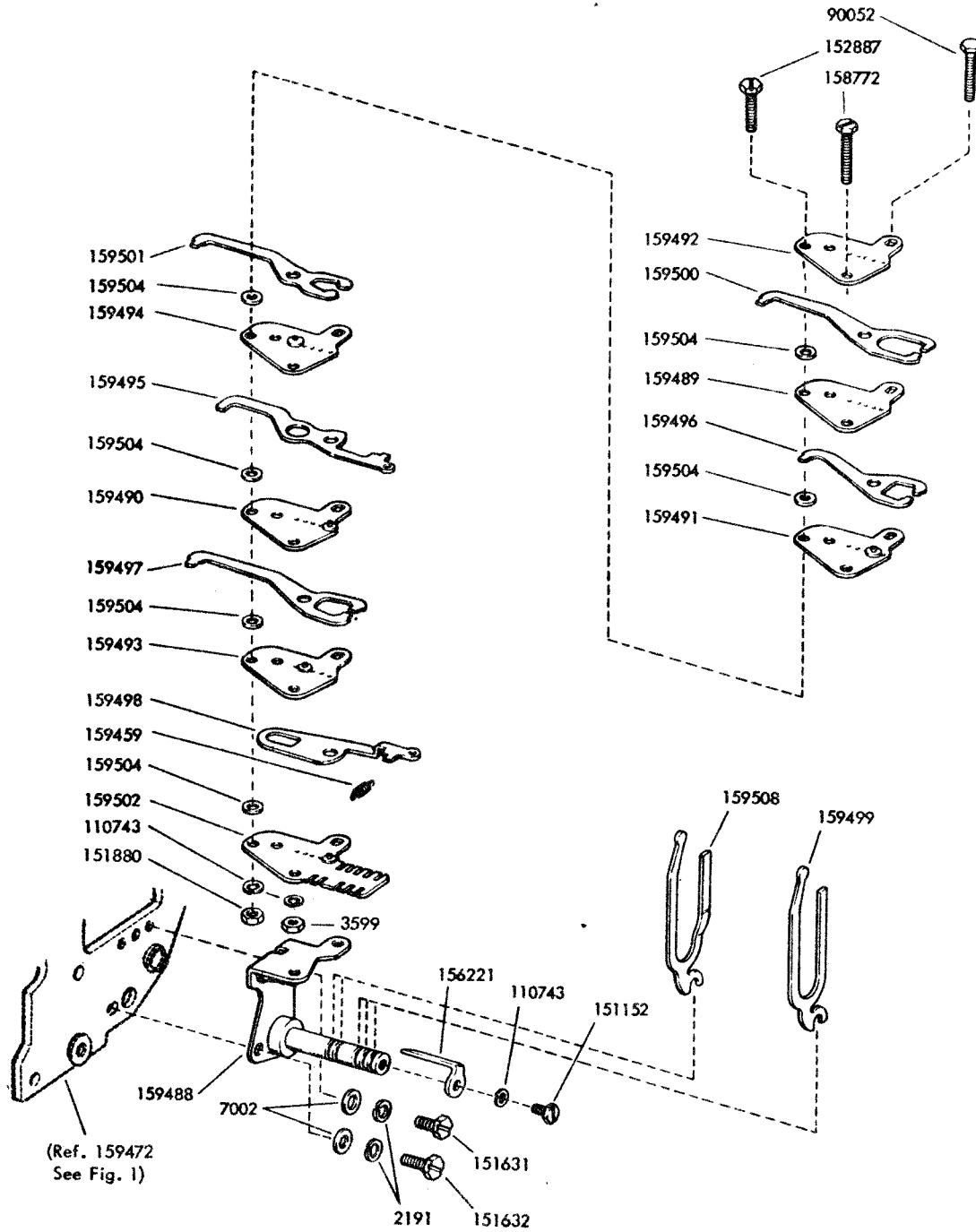
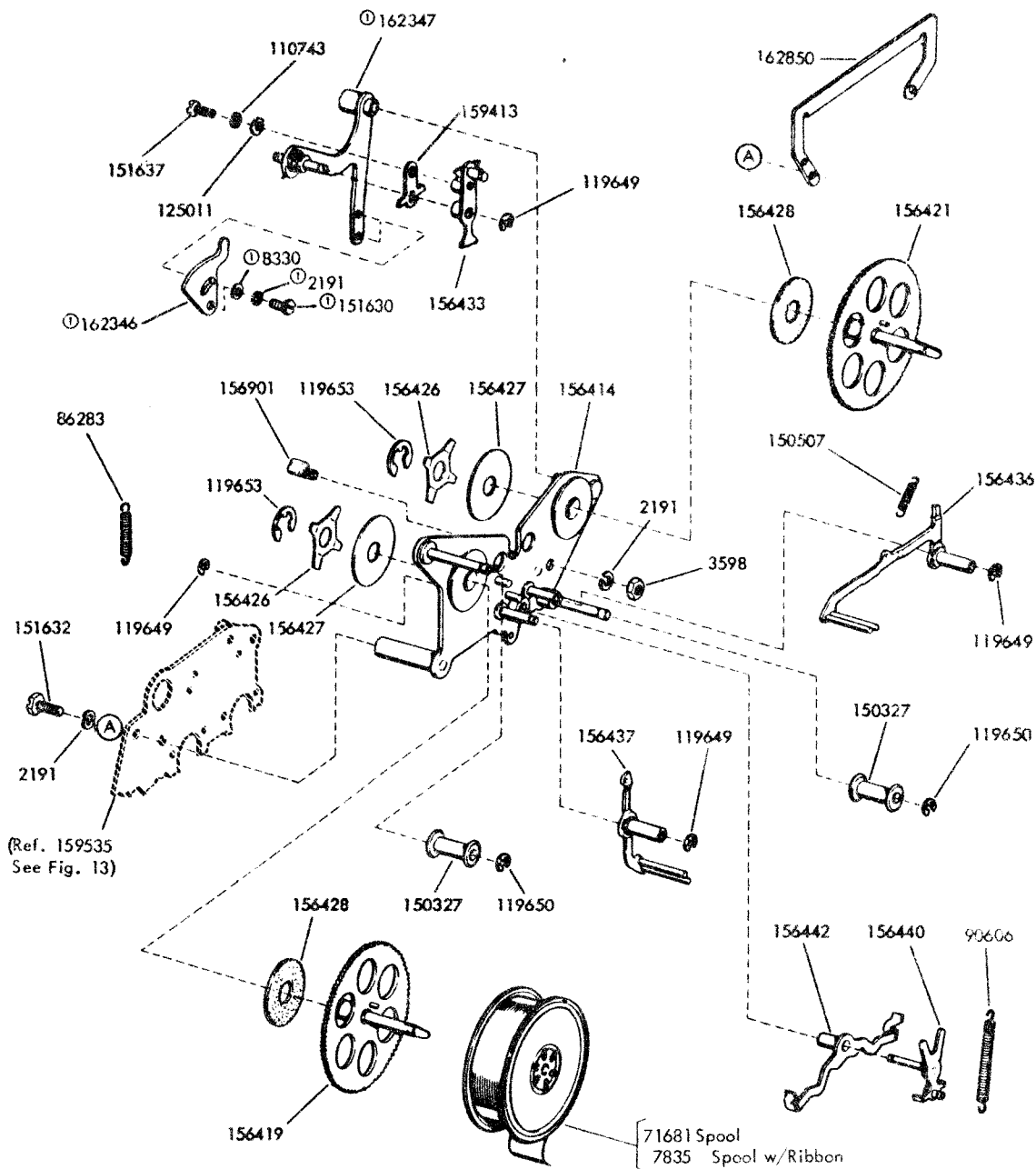


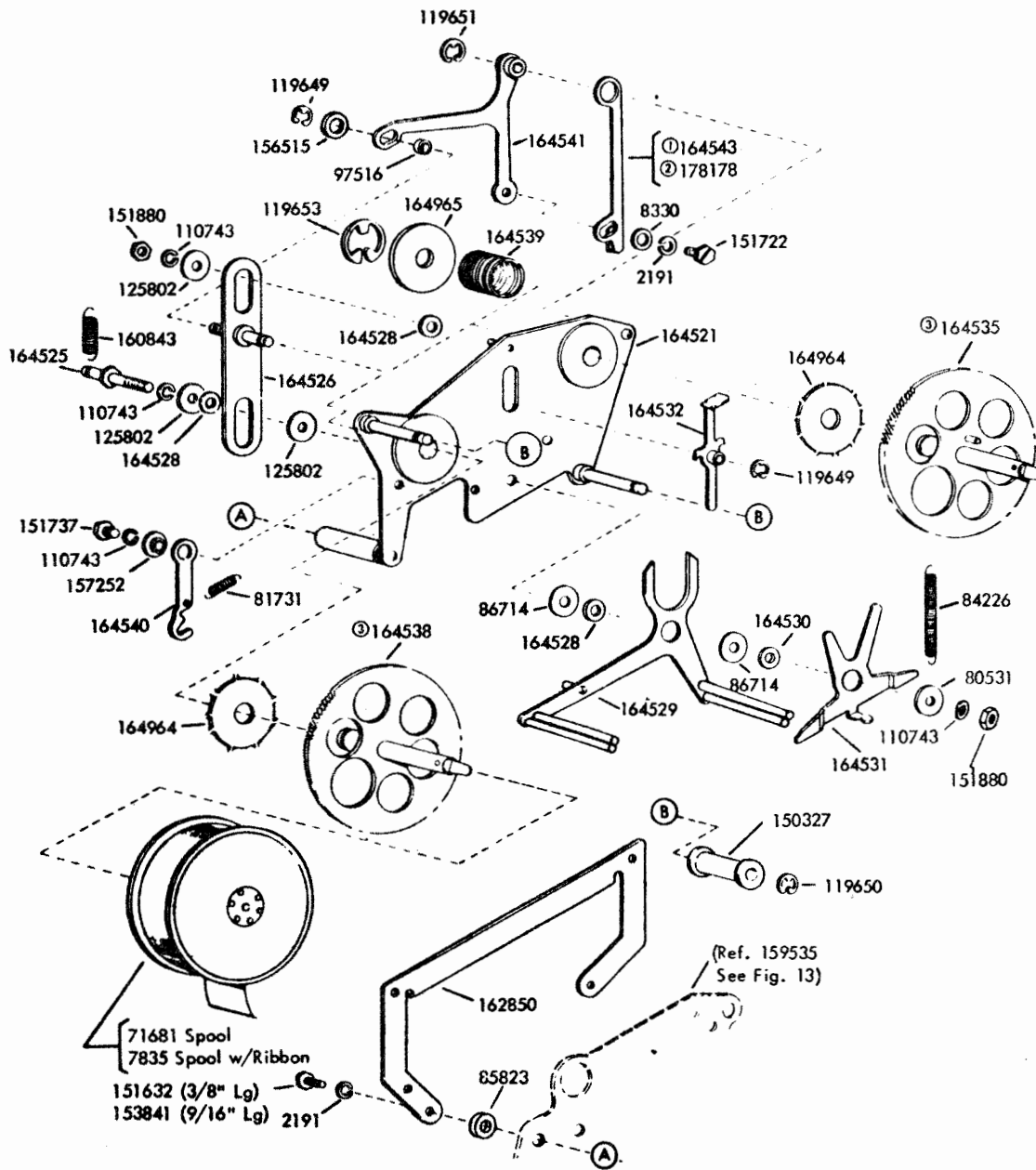
FIGURE 18. TRANSFER MECHANISM



Note:
For Latest Design Ribbon Feed Mechanism See Figure 20.

① 154325 Modification Kit to provide
LPR with Adjustable Ribbon Drive Arm

FIGURE 19. RIBBON FEED MECHANISM (EARLY DESIGN)



For Early Design Ribbon Feed Mechanism See Figure 19.

- ① Peculiar to units equipped with spring retracted Punch pins
- ② Peculiar to units equipped with power retracted Punch pins
- ③ 179579 Decalcomania which shows direction of "Ribbon to Roller" is available.

FIGURE 20. RIBBON FEED MECHANISM (LATER DESIGN)

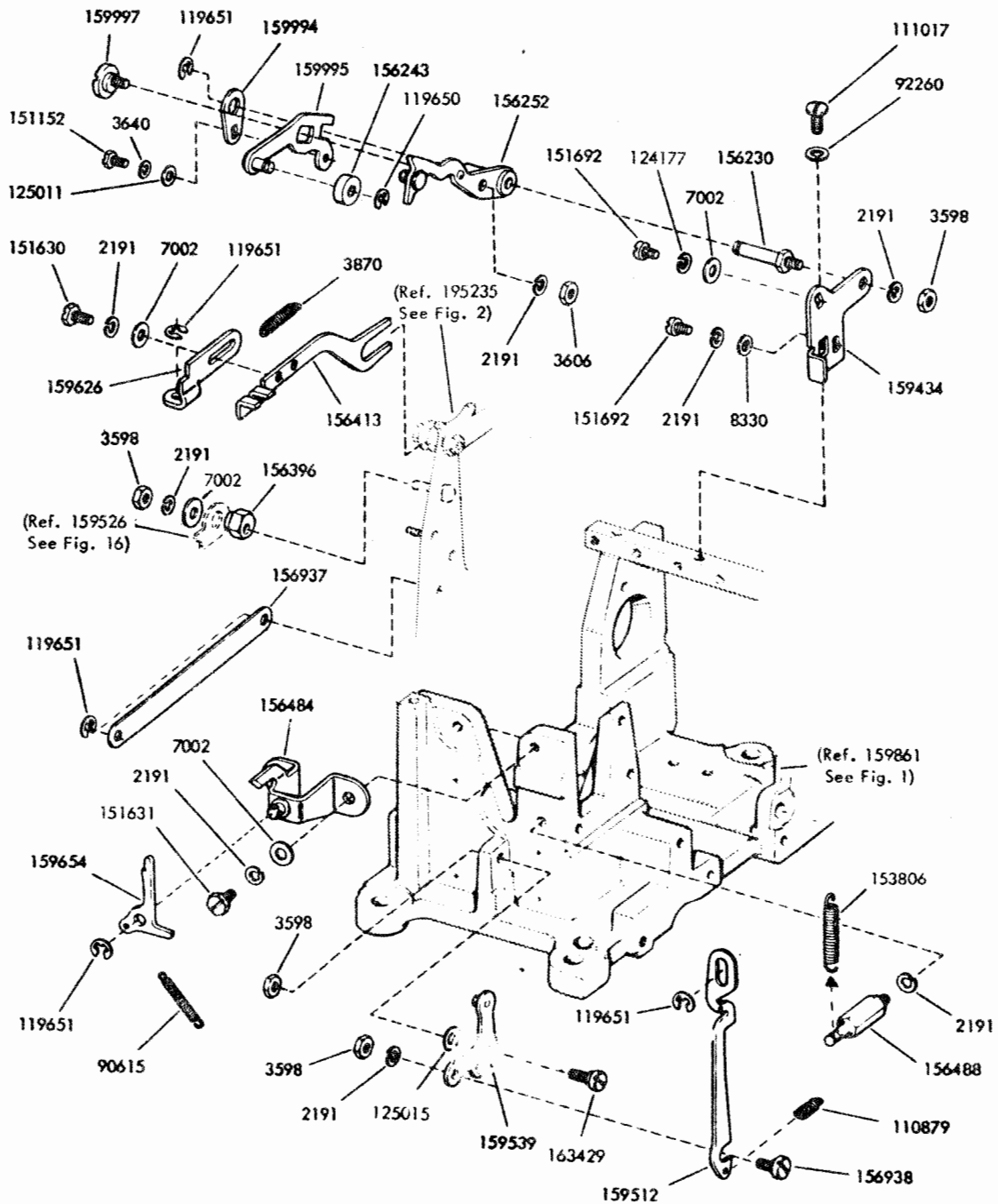


FIGURE 21. TYPING MECHANISM

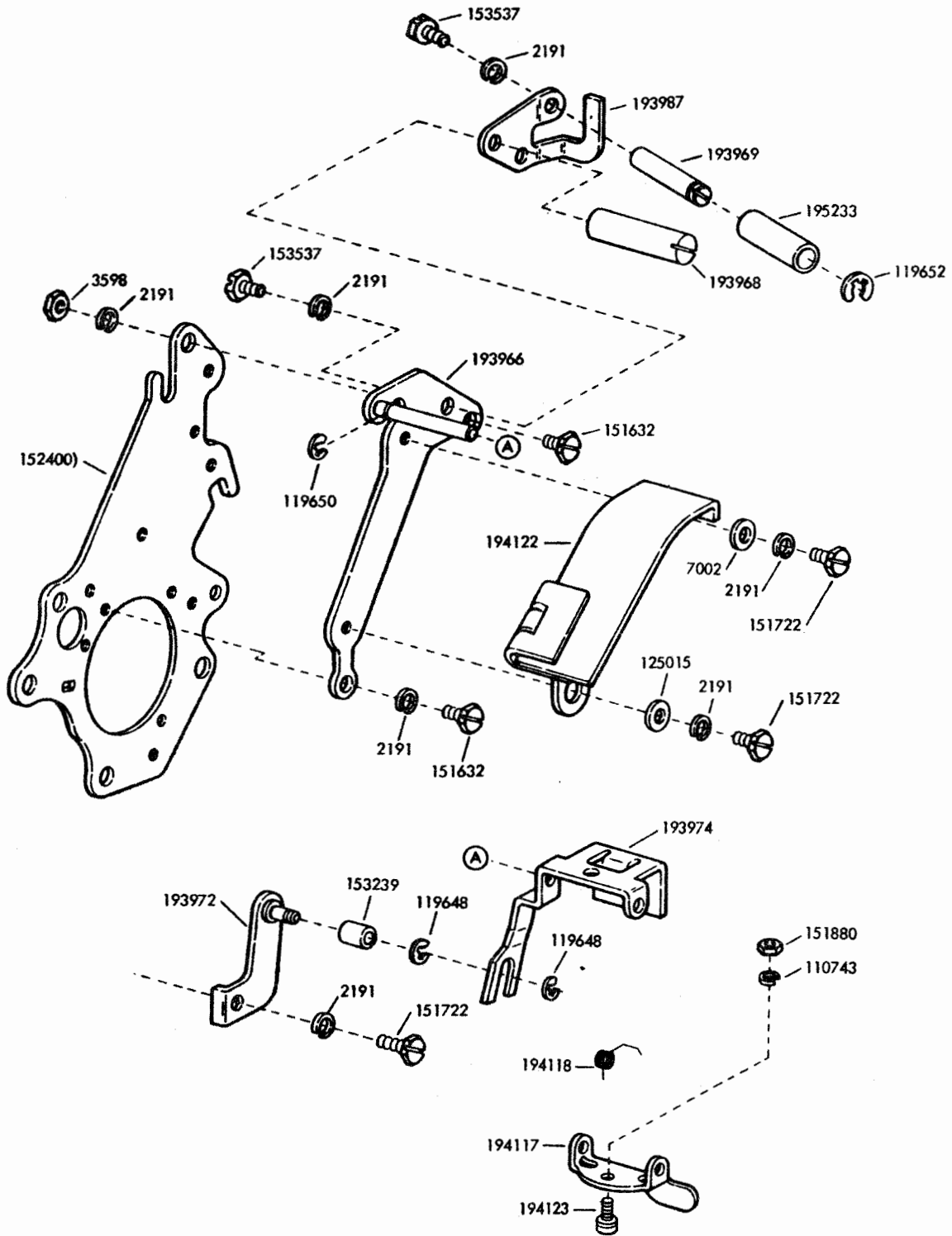


FIGURE 22. TAPE DEPRESSOR MECHANISM

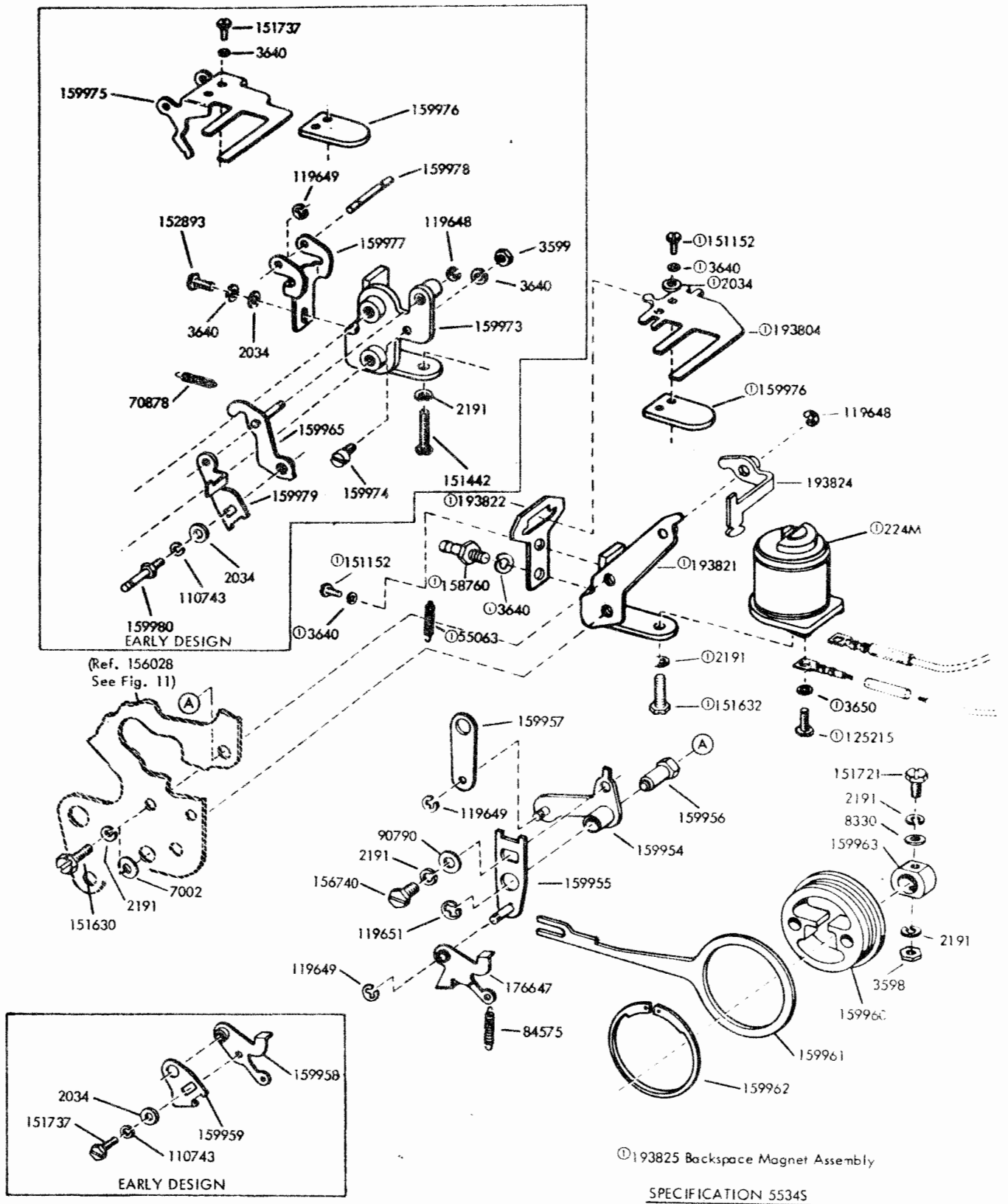


FIGURE 23. 159364 MODIFICATION KIT TO ADD POWER DRIVE TO BACKSPACE

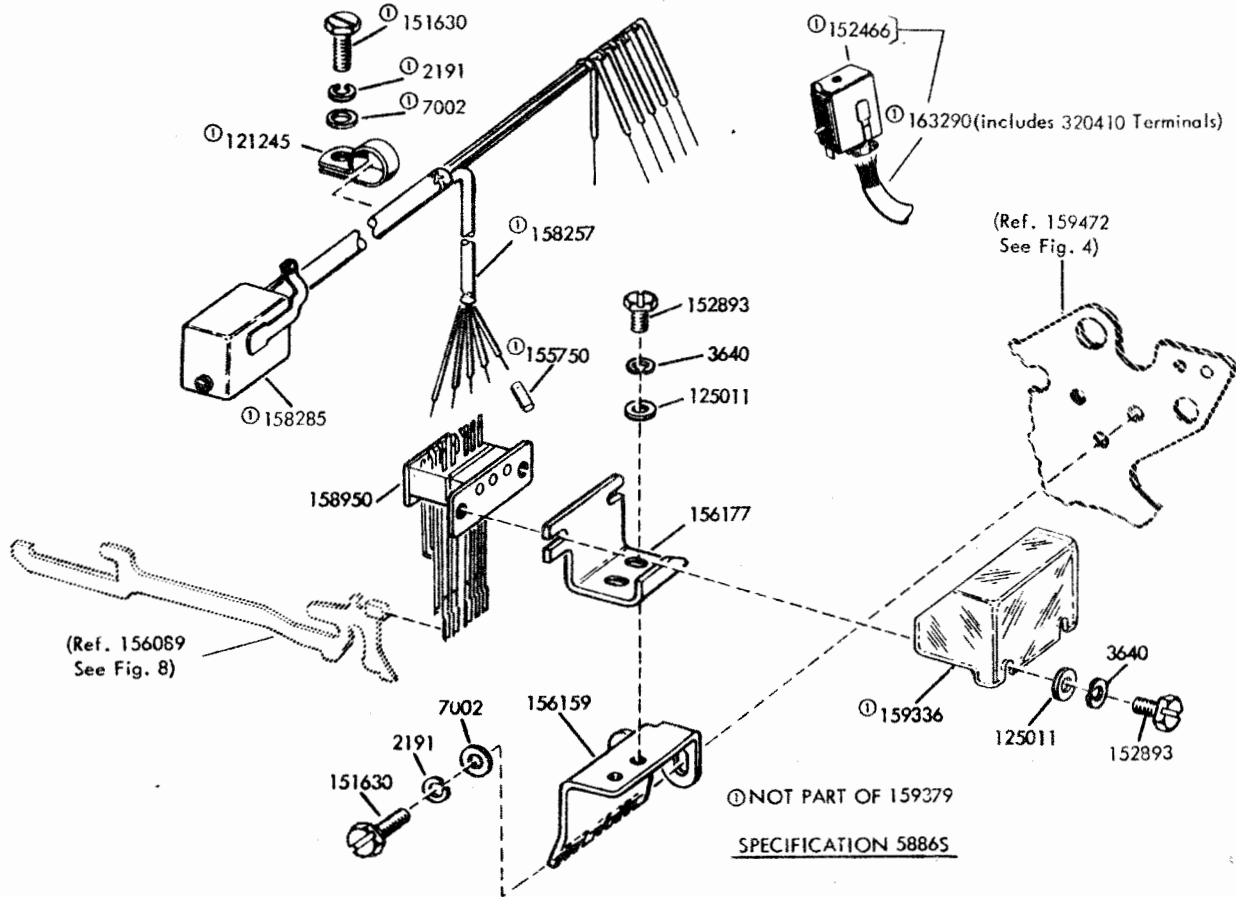


FIGURE 24. 159379 MODIFICATION KIT TO ADD "MAKE ONLY" CODE READING CONTACTS

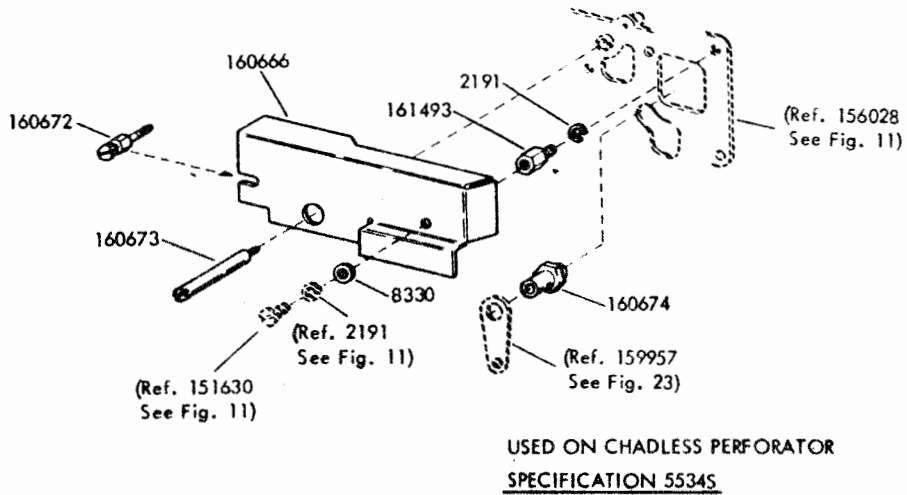


FIGURE 25. 160881 MODIFICATION KIT TO ADD GUARD TO COVER BACKSPACE MECHANISM

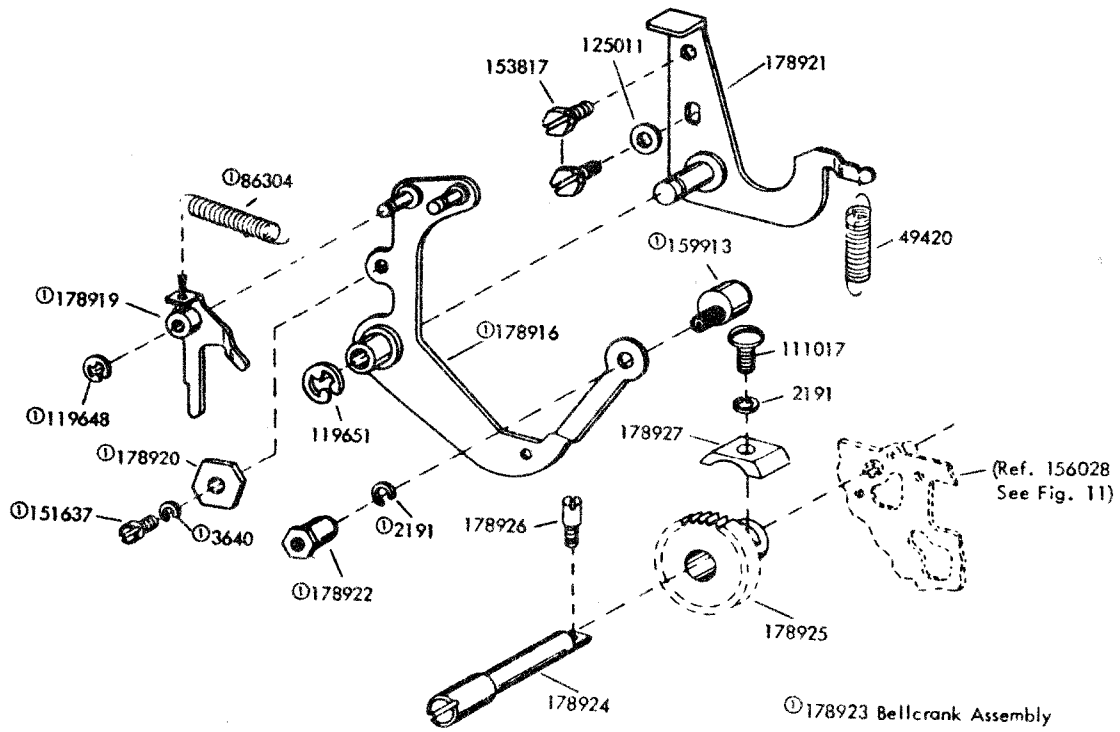


FIGURE 26. 178917 MODIFICATION KIT TO PROVIDE BACKSPACE MECHANISM FOR FULLY PERFORATED TAPE AND PRINTING BETWEEN FEED HOLES

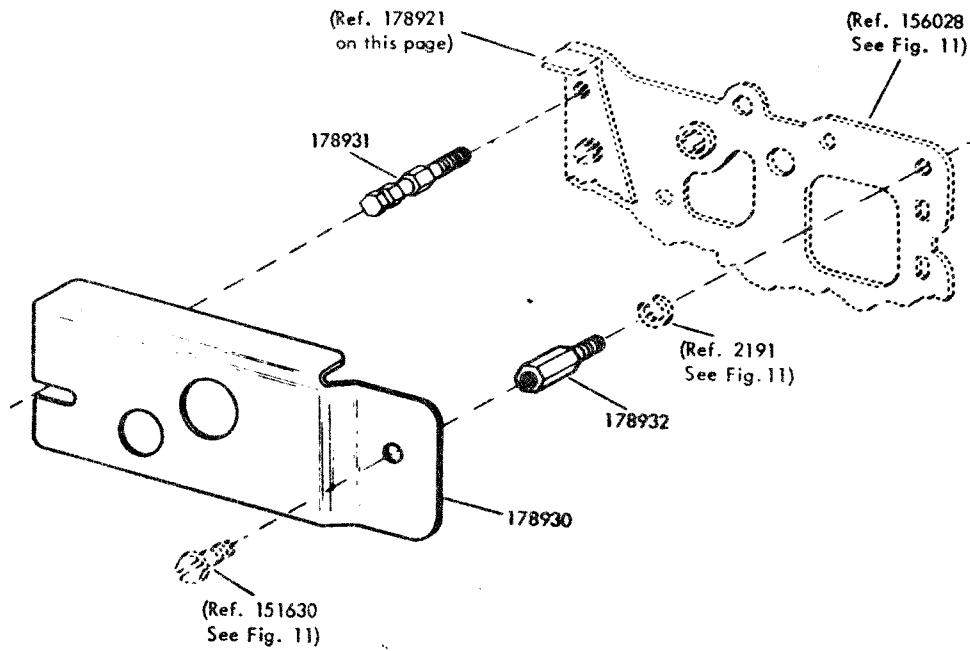
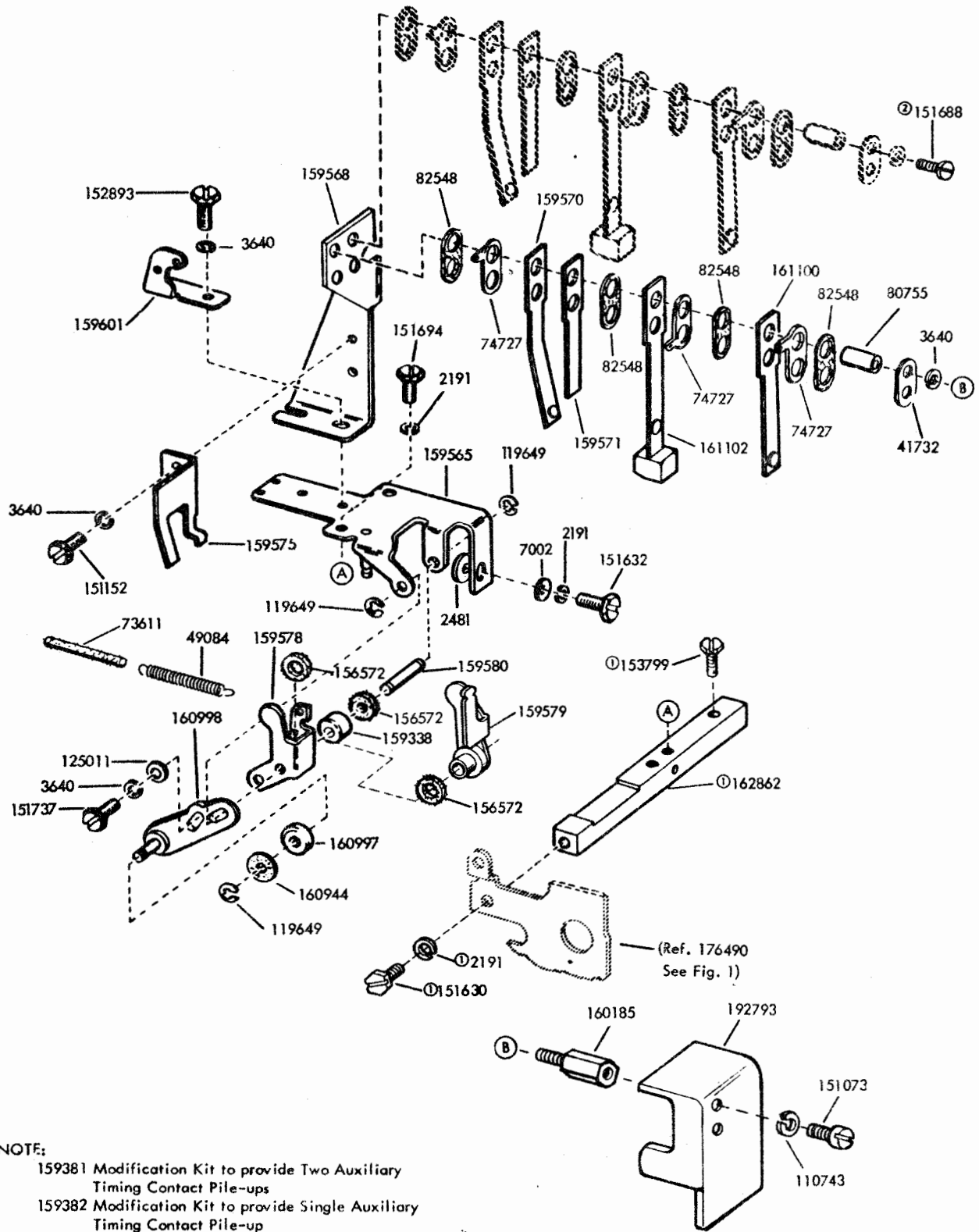


FIGURE 27. 178918 MODIFICATION KIT TO PROVIDE GUARD FOR BACKSPACE MECHANISM



NOTE:
 159381 Modification Kit to provide Two Auxiliary
 Timing Contact Pile-ups
 159382 Modification Kit to provide Single Auxiliary
 Timing Contact Pile-up

SPECIFICATION 58865

① Not Part of 159381 or 159382 Modification Kits
 ② Used with only the 159381 Modification Kit

FIGURE 28. 159381 AND 159382 MODIFICATION KITS TO ADD AUXILIARY TIMING CONTACT

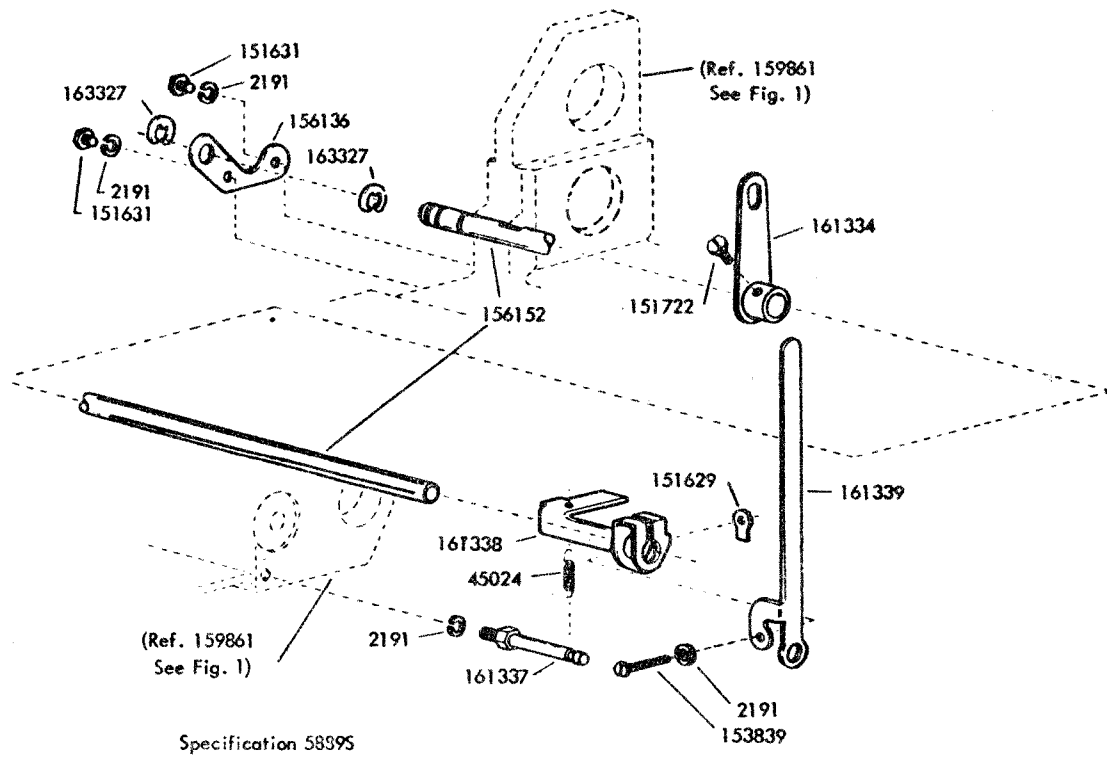


FIGURE 29. 161340 MODIFICATION KIT TO ADD MANUAL INTERFERING LETTERS TAPE FEED-OUT

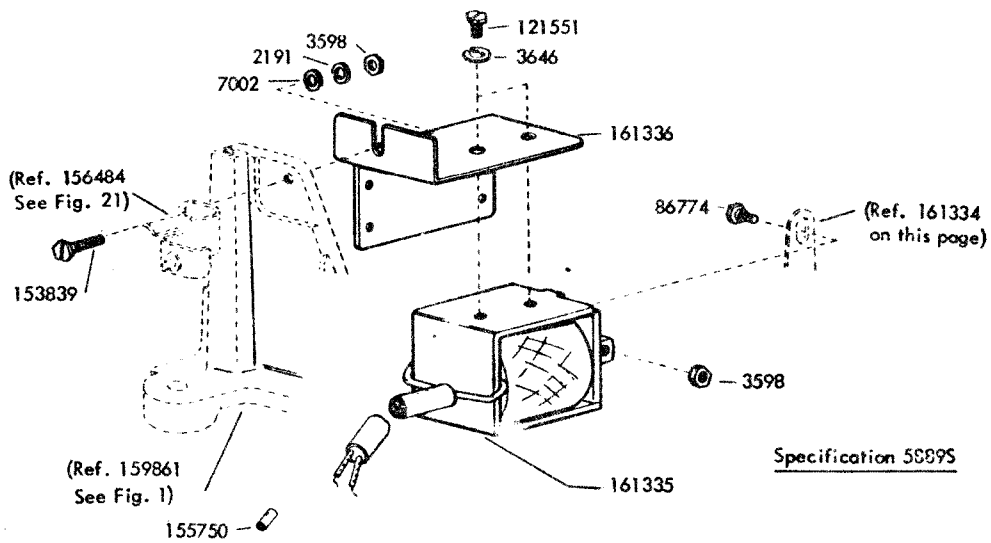


FIGURE 30. 161341 MODIFICATION KIT TO ADD SOLENOID OPERATION TO LETTERS FEED-OUT

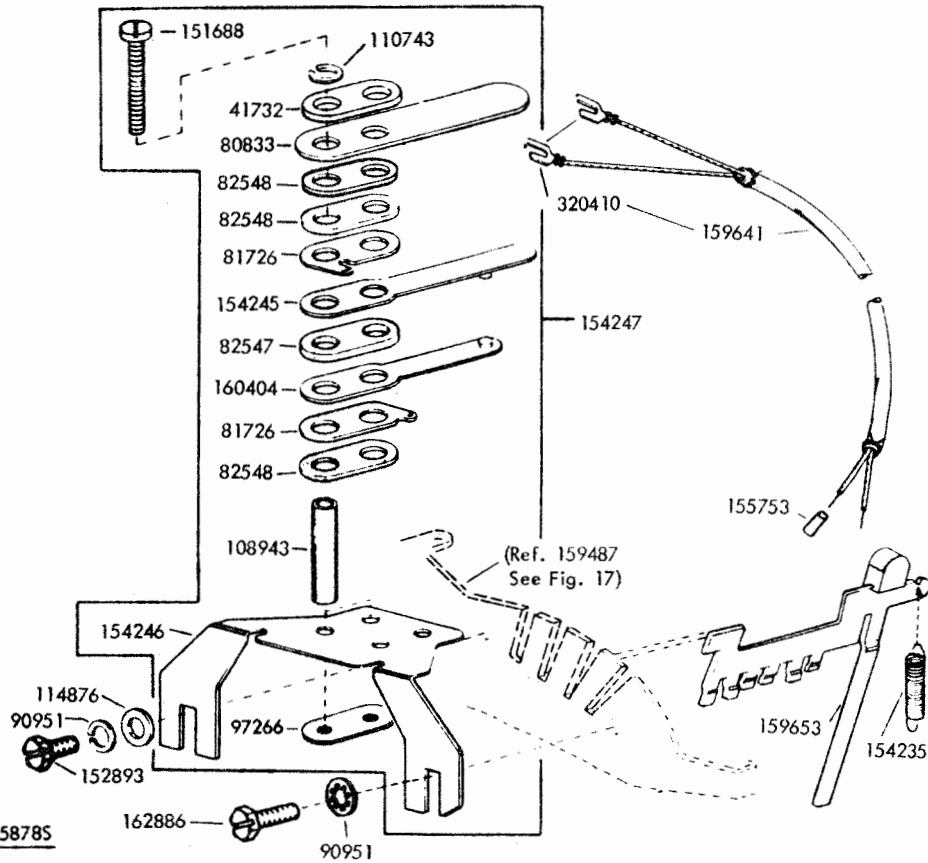


FIGURE 31. 159360 MODIFICATION KIT TO ADD SIGNAL BELL CONTACT (ON UPPER CASE "S")

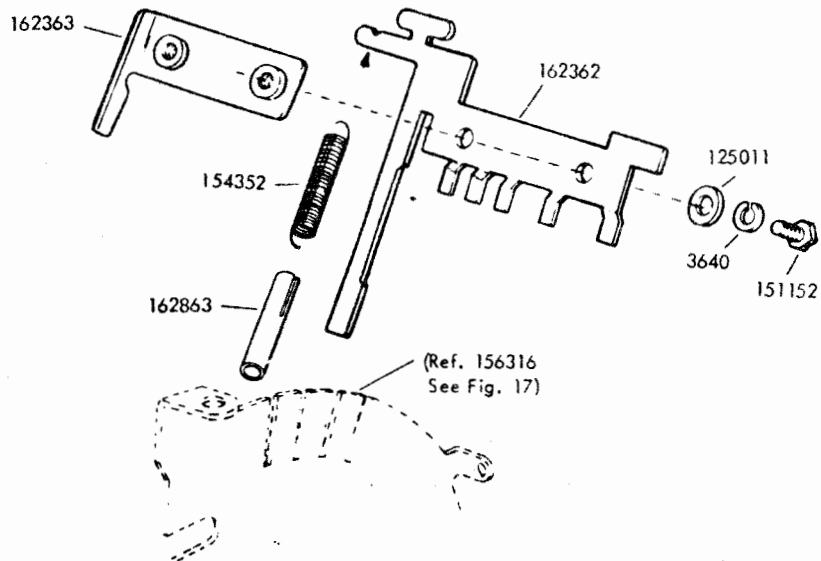
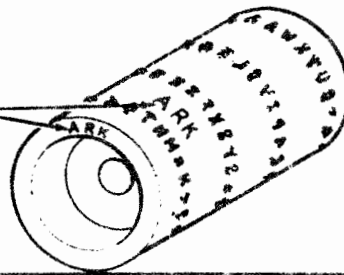


FIGURE 32. 162375 MODIFICATION KIT TO ADD "UNSHIFT ON SPACE"

Typewheel Code may be found in either of two locations.



| TYPEWHEEL ARRANGEMENT | | | | | | | | | | | | | |
|-----------------------|-------------|---------------|-------------|---------------|-------------|----------|-------------|----------|-------------|----------|-------------|---------|-------------|
| COMMUNICATION | | COMMUNICATION | | COMMUNICATION | | FRACTION | | FRACTION | | FRACTION | | WEATHER | |
| CODE | PART NUMBER | CODE | PART NUMBER | CODE | PART NUMBER | CODE | PART NUMBER | CODE | PART NUMBER | CODE | PART NUMBER | CODE | PART NUMBER |
| AWA | 173967 | AFU | 175690 | AWJ | 175573 | ABA | 175586 | AGM | 307306 | AXY | 175520 | ARE | 173970 |
| ABD | 175588 | AFV | 175691 | AWM | 175576 | ABC | 175587 | AGP | 307308 | AXZ | 175521 | ABZ | 175607 |
| ABE | 175589 | AFW | 175692 | AWU | 175582 | ABG | 175591 | AGT | 307311 | AYB | 175523 | ADH | 175636 |
| ABF | 175590 | AFX | 175693 | AXE | 175504 | ABM | 175596 | AGU | 307312 | AYE | 175526 | ADR | 175643 |
| ABH | 175592 | AFY | 175694 | AXG | 175506 | ABN | 175597 | AGW | 307314 | AYG | 175528 | AGS | 307310 |
| ABJ | 175593 | AGA | 175696 | AXH | 175507 | ABR | 175599 | AGX | 307315 | AYL | 175532 | AHT | 307333 |
| ABL | 175595 | AGE | 307300 | AXP | 175513 | ABU | 175602 | AGY | 307316 | AYP | 175535 | AJG | 307346 |
| ABP | 175598 | AGK | 307304 | AXR | 175514 | ABV | 175603 | AGZ | 307317 | AYS | 175537 | AJK | 307348 |
| ABS | 175600 | AGN | 307307 | AXU | 175517 | ABX | 175605 | AHB | 307319 | AYT | 175538 | AJM | 307350 |
| ABT | 175601 | AGR | 307309 | AYC | 175524 | ABY | 175606 | AHE | 307322 | AYV | 175544 | AJR | 307353 |
| ABW | 175604 | AHA | 307318 | AYF | 175527 | ACB | 175609 | AHK | 307326 | AZE | 175552 | AKD | 307364 |
| ACA | 175608 | AHC | 307320 | AYH | 175529 | ACE | 175611 | AHL | 307327 | AZG | 175554 | ARM | 163677 |
| ACD | 175610 | AHD | 307321 | AYK | 175531 | ACG | 175613 | AHM | 307328 | AZM | 175559 | ARW | 163683 |
| ACF | 175612 | AHF | 307323 | AYM | 175533 | ACH | 175614 | AHR | 307331 | AZN | 175561 | AWB | 163685 |
| ACL | 175617 | AHN | 307329 | AYR | 175536 | ACJ | 175615 | AHV | 307335 | AZV | 175567 | AWE | 163688 |
| ACM | 175618 | AHP | 307330 | AYU | 175543 | ACK | 175616 | AJB | 307341 | BRB | 175701 | AWP | 175578 |
| ACN | 175619 | AHS | 307332 | AZC | 175550 | ACR | 175621 | AJD | 307343 | BRG | 175706 | AWY | 175584 |
| ACP | 175620 | AHU | 307334 | AZH | 175555 | ACS | 175622 | AJE | 307344 | BRJ | 175708 | AWZ | 175585 |
| ACT | 175623 | AHW | 307336 | AZJ | 175556 | ACZ | 175629 | AJH | 307347 | BRW | 175719 | AXA | 175500 |
| ACU | 175624 | AHX | 307337 | AZK | 175557 | ADA | 175630 | AJI | 307349 | BRX | 175720 | AXC | 175502 |
| ACV | 175625 | AHY | 307338 | AZP | 175560 | ADC | 175632 | AJP | 307351 | BWD | 175723 | AXD | 175503 |
| ACW | 175626 | AJA | 307340 | AZQ | 175562 | ADE | 175633 | AJT | 307355 | BWM | 175731 | AXF | 175505 |
| ACX | 175627 | AJC | 307342 | AZT | 175565 | ADF | 175634 | AJW | 307357 | BWY | 175740 | AXS | 175515 |
| ACY | 175628 | AJF | 307345 | AZU | 175566 | ADK | 175638 | AJX | 307358 | BXB | 175743 | AYA | 175522 |
| ADB | 175631 | AJS | 307354 | AZW | 175568 | ADM | 175640 | AKA | 307361 | BXD | 175745 | AYD | 175525 |
| ADJ | 175637 | AJU | 307356 | AZX | 175569 | ADP | 175642 | AKB | 307362 | BXK | 175751 | AYJ | 175539 |
| ADL | 175639 | AJZ | 307360 | AZY | 175570 | ADS | 175644 | AKC | 307363 | | | AYN | 175534 |
| ADT | 175645 | AKF | 307366 | BRL | 175710 | ADV | 175647 | AKE | 307365 | | | AYX | 175546 |
| ADU | 175646 | AKG | 307367 | BRN | 175712 | ADX | 175649 | AKH | 307368 | | | AYZ | 175547 |
| ADW | 175648 | AKJ | 307369 | BRP | 175713 | ADY | 175650 | AKS | 307375 | | | AZF | 175553 |
| AED | 175655 | AKL | 307370 | BRQ | 175714 | ADZ | 175651 | AKT | 307376 | | | AZL | 175558 |
| AEF | 175656 | AKM | 307371 | BRT | 175716 | AEA | 175652 | AKV | 307378 | | | AZR | 175563 |
| AEG | 175657 | AKN | 307372 | BWC | 175700 | AEB | 175653 | AKX | 307380 | | | AZS | 175564 |
| AEH | 175658 | AKP | 307373 | BWH | 175727 | ABJ | 175659 | ALB | 307384 | | | BRF | 175705 |
| AEK | 175660 | AKR | 307374 | BWJ | 175728 | AEP | 175664 | ARC | 173971 | | | BRH | 175707 |
| AEL | 175661 | AKU | 307377 | BWK | 175729 | AER | 175665 | ARJ | 173968 | | | BRK | 175709 |
| AEM | 175662 | AKW | 307379 | BWL | 175730 | AET | 175667 | ARP | 163678 | | | BR5 | 175715 |
| AEN | 175663 | AKY | 307381 | BWN | 175732 | AFA | 175674 | ART | 163680 | | | BRV | 175718 |
| AES | 175666 | AKZ | 307382 | BWP | 175733 | AFD | 175677 | ARU | 163689 | | | BRY | 175721 |
| AEV | 175669 | ALA | 307383 | BWR | 175734 | AFE | 175678 | AWD | 163687 | | | BRZ | 175722 |
| AEW | 175670 | ARA | 173965 | BWS | 175735 | AFH | 175680 | AWK | 175574 | | | BWE | 175724 |
| AEX | 175671 | ARK | 163675 | BWT | 175736 | AFK | 175682 | AWN | 175577 | | | | |
| AEY | 175672 | ARL | 163676 | BWX | 175739 | AFL | 175683 | AWR | 175579 | | | | |
| AFB | 175675 | ARS | 173969 | BWZ | 175741 | AFN | 175685 | AWT | 175581 | | | | |
| AFC | 175676 | ARV | 163684 | BXA | 175742 | AFZ | 175695 | AWX | 175583 | | | | |
| AFG | 175679 | ARX | 163682 | BXC | 175744 | AGB | 175697 | AXB | 175501 | | | | |
| AFJ | 175681 | ARY | 163681 | BXE | 175746 | AGC | 175698 | AXL | 175510 | | | | |
| AFM | 175684 | ARZ | 163679 | BXF | 175747 | AGD | 175699 | AXM | 175511 | | | | |
| AFP | 175686 | AWC | 163686 | BXG | 175748 | AGF | 307301 | AXN | 175512 | | | | |
| AFR | 175687 | AWF | 163690 | BXH | 175749 | AGH | 307302 | AXT | 175516 | | | | |
| AFS | 175688 | AWG | 175571 | BXJ | 175750 | AGJ | 307303 | AXV | 175518 | | | | |
| AFT | 175689 | AWH | 175572 | BXL | 175752 | AGL | 307305 | AXW | 175519 | | | | |

FIGURE 33. TYPEWHEELS

NUMERICAL INDEX

| Part Number | Description and Page Number | Part Number | Description and Page Number | Part Number | Description and Page Number |
|-------------|---|-------------|---|-------------|---|
| 224M | Coil, Magnet 23 | 90535 | Washer, Felt 17 | 150034 | Disk, 2 Stop Clutch 8 |
| 1036 | Nut, 6-40 Hex 11 | 90560 | Washer, Flat 9 | 150040 | Screw, 6-40 x 5/8 Fil 7, 8 |
| 2034 | Washer, Flat 23 | 90573 | Spring 3, 4 | 150043 | Shoe, Secondary Clutch 7, 8 |
| 2191 | Washer, Lock 2 to 9, 11 to 27 | 90599 | Shim, .008" Thk 15 | 150044 | Shoe, Primary Clutch 7, 8 |
| 2199 | Nut, 7/16-32 Hex 14 | 90606 | Spring 2, 19 | 150048 | Spring 2, 5 |
| 2407 | Washer, Lock 14 | 90615 | Spring 21 | 150241 | Spring 2, 5, 7, 8 |
| 2481 | Washer, Flat 26 | 90790 | Washer, Flat 23 | 150327 | Roller, Ribbon 19, 20 |
| 2669 | Washer, Lock 3, 4, 6 | 90951 | Washer, Lock 17, 28 | 150356 | Lever, Trip 2, 5 |
| 3438 | Washer, Flat 4, 6 | 91120 | Spring 11 | 150507 | Spring 19 |
| 3598 | Nut, 6-40 Hex 2, 3, 4, 5, 9, 11, 12, 14, 15, 16, 19, 21, 22, 23, 27 | 92260 | Washer, Lock 21 | 150830 | Bushing, Shoulder 8 |
| 3599 | Nut, 4-40 Hex 3, 9, 13, 15, 16, 18, 23 | 93108 | Washer, Lock 2, 4 | 150841 | Bearing 8 |
| 3603 | Nut, 1/4-32 Hex 2, 4 | 93117 | Washer, Lock 11 | 150923 | Washer, Felt 12 |
| 3606 | Nut, 6-40 Hex 3, 9, 21 | 93356 | Washer, Felt 2, 5, 11 | 150966 | Insulator, Terminal Block 6 |
| 3639 | Washer, Lock 4 | 96717 | Screw, 4-40 Shoulder 3 | 150990 | Washer, Felt 13 |
| 3640 | Washer, Lock 3, 4, 8, 13, 14, 15, 17, 21, 23, 24, 25, 26, 28 | 97266 | Plate, Clamp 28 | 151073 | Screw, 4-40 x 5/32 Fil 2, 5, 9, 10, 12, 26 |
| 3646 | Washer, Lock 27 | 97516 | Bushing 20 | 151152 | Screw, 4-40 x 3/16 Hex 2, 5, 11, 15, 17, 18, 21, 23, 26, 28 |
| 3650 | Washer, Flat 23 | 101123 | Washer, Felt 15 | 151222 | Washer, Felt 12 |
| 3870 | Spring 21 | 108943 | Bushing 28 | 151246 | Washer, Flat 3, 4 |
| 5363 | Spring, Compression 11 | 110434 | Screw, 4-40 x 3/16 Fil 2 | 151335 | Stud 6 |
| 6970 | Nut, 3/8-32 Hex 6 | 110437 | Spring 17 | 151346 | Screw, 6-40 x 3/8 Fil 4 |
| 7002 | Washer, Flat 2 to 9, 11, 13, 14, 15, 17, 18, 21 to 24, 26, 27 | 110743 | Washer, Lock 2, 5, 7 to 20, 22, 23, 26, 28 | 151362 | Wick, Felt 3, 4 |
| 7835 | Ribbon w/Spool, Black 19, 20 | 110879 | Spring 13, 16, 21 | 151398 | Spring 17 |
| 8330 | Washer, Flat 2, 3, 5, 9, 12, 19, 20, 21, 23, 24 | 111017 | Screw, 6-40 x 5/16 Fil 6, 21, 25 | 151415 | Block, Terminal 6 |
| 92746 | Spring 14 | 112626 | Nut, 10-32 Hex 14 | 151416 | Nut, 6-40 Hex 6, 11, 12 |
| 93765 | Washer, Flat 9 | 112634 | Spring 17 | 151442 | Screw, 6-40 x 1/2 Hex 3, 14, 15, 23 |
| 91382 | Spring 11 | 114876 | Washer, Flat 17, 28 | 151620 | Strap, Motor Mounting 6 |
| 91543 | Bearing, Ball 2, 4 | 115122 | Washer, Felt 14 | 151621 | Screw, 6-32 x 3/4 Rd 6 |
| 91732 | Plate, Clamp 26, 28 | 115134 | Washer, Felt 15 | 151622 | Nut, 6-32 Sq 6 |
| 92823 | Washer, Flat 7, 8 | 115941 | Washer, Flat 2, 4 | 151629 | Nut, 6-40 Lug 2, 5, 12, 14, 27 |
| 95024 | Spring 27 | 119647 | Ring, Retaining 11 | 151630 | Screw, 6-40 x 1/4 Hex 2, 7, 8, 11, 13, 14, 16, 19, 21, 23, 24, 25, 26 |
| 97024 | Washer, Flat 15 | 119648 | Ring, Retaining 4, 9, 10, 11, 22, 23, 25 | 151631 | Screw, 6-40 x 5/16 Hex 2 to 6, 8, 9, 11, 13, 17, 18, 21, 27 |
| 99084 | Spring 26 | 119649 | Ring, Retaining 11, 14, 15, 17, 19, 20, 23, 26 | 151632 | Screw, 6-40 x 3/8 Hex 2, 3, 4, 6 to 9, 18, 19, 20, 22, 23, 26 |
| 99420 | Spring 25 | 119650 | Ring, Retaining 12, 19 to 22 | 151637 | Screw, 4-40 x 1/4 Fil 9, 19, 25 |
| 99063 | Spring 9, 10, 23 | 119651 | Ring, Retaining 3, 9, 14, 16, 17, 20, 21, 23, 25 | 151640 | Lever, Shoe Release 7 |
| 990878 | Spring 9, 23 | 119652 | Ring, Retaining 2, 3, 5, 11, 12, 22 | 151657 | Screw, 6-40 x 1/4 Fil 3, 5, 6 |
| 991437 | Washer, Flat 12 | 119653 | Ring, Retaining 14, 19, 20 | 151658 | Screw, 6-40 x 5/16 Fil 2, 3, 4 |
| 991681 | Spool, Ribbon 19, 20 | 121100 | Spring 17 | 151688 | Screw, 4-40 x 5/8 Fil 26, 28 |
| 993611 | Wick, Felt 26 | 121245 | Clamp, 5/16 ID Cable 24 | 151692 | Screw, 6-40 x 3/16 Fil 21 |
| 994553 | Wick, Felt 14 | 121551 | Screw, 8-32 x 1/4 Hex 27 | 151694 | Screw, 6-40 x 11/32 Fil 26 |
| 994727 | Terminal, Contact 26 | 122149 | Screw, 4-40 Spl 9 | 151712 | Button, Pivot 6 |
| 996081 | Washer, Flat 5 | 122207 | Strap Assembly 6 | 151721 | Screw, 6-40 x 3/4 Hex 23 |
| 9990531 | Washer, Flat 20 | 124177 | Washer, Lock 3, 4, 9, 11, 21 | 151722 | Screw, 6-40 x 3/16 Hex 9, 11, 20, 22, 27 |
| 9990755 | Bushing, Insulating 26 | 125011 | Washer, Flat 2, 3, 5, 9, 10, 11, 13, 15, 16, 17, 19, 21, 24, 25, 26, 28 | 151724 | Screw, 10-32 x 5/8 Hex 4, 6 |
| 9990833 | Guard, Contact Spring 28 | 125015 | Washer, Flat 3, 12, 13, 21, 22 | 151728 | Spring 7 |
| 9991726 | Terminal 28 | 125215 | Screw, 4-40 x 3/16 Hex 23 | 151736 | Spring 8 |
| 9991731 | Spring 20 | 125231 | Nut, 10-32 Hex 3, 4 | 151737 | Screw, 4-40 x 11/64 Hex 7, 8, 20, 23, 26 |
| 9992392 | Shim, .004" Thk 3 | 125802 | Washer, Flat 20 | 151880 | Nut, 4-40 Hex 18, 20, 22 |
| 9992547 | Insulator, .094" Thk 28 | 128357 | Ring, Retaining 12, 17 | 152400 | Plate, Selector Mounting 22 |
| 9992548 | Insulator, .062" Thk 26, 28 | 130330 | Washer, Felt 15 | 152415 | Stud, Adjusting 2, 4 |
| 9994226 | Spring 20 | 130696 | Washer, Felt 16 | 152466 | Connector, 20 Pt Receptacle 24 |
| 9994575 | Spring 23 | 131016 | Washer, Felt 15 | 152634 | Washer, Flat 12 |
| 9995422 | Screw, 10-32 x 15/16 Hex 6 | 135716 | Spring 2, 5 | 152887 | Screw, 4-40 x 1/2 Hex 18 |
| 9995823 | Spacer, .188" Thk 20 | 135901 | Washer, Cup 14 | 152893 | Screw, 4-40 x 1/4 Hex 2 to 5, 9 to 12, 14, 17, 23, 24, 26, 28 |
| 9996079 | Washer, Felt 15 | 139697 | Screw, 4-40 x 9/32 Fil 7 | 153030 | Mount, Vibration 6 |
| 9996283 | Spring 19 | 139752 | Screw, 4-40 x 11/64 Fil 2, 5 | 153239 | Roller 4, 22 |
| 9996304 | Spring 9, 25 | 150000 | Drum, Clutch 8 | 153267 | Washer, Felt 10 |
| 9996506 | Post, Spring 2 | 150013 | Disk, Adjusting 7 | | |
| 9996714 | Washer, Flat 20 | 150014 | Disk, Adjusting 8 | | |
| 9996774 | Screw, 6-40 Shoulder 15, 26 | 150027 | Lever, Shoe Release 8 | | |
| 9997401 | Spring 2, 5 | 150029 | Wick, Felt 7, 8 | | |
| 99990052 | Screw, 4-40 x 5/8 Hex 18 | | | | |
| 99990361 | Washer, Felt 12 | | | | |

NUMERICAL INDEX (Continued)

| Part Number | Description and Page Number | Part Number | Description and Page Number | Part Number | Description and Page Number |
|-------------|---|-------------|--------------------------------|-------------|-----------------------------------|
| 153537 | Screw, 6-40 x 9/32 Hex 22 | 156104 | Shaft 10 | 156436 | Arm, Front Ribbon Reversing 19 |
| 153799 | Screw, 4-40 x 21/64 Hex 26 | 156136 | Bracket, Shaft Mounting 27 | 156437 | Arm, Rear Ribbon Reversing 19 |
| 153806 | Spring 21 | 156152 | Shaft, Feed-out Drive 27 | | |
| 153817 | Screw, 4-40 x 3/8 Hex 9, 25 | 156159 | Bracket 24, | 156440 | Lever, Ribbon Reversing 19 |
| 153839 | Screw, 6-40 x 5/8 Hex 2, 5, 12, 14, 27 | 156162 | Washer, Flat 12 | 156442 | Pawl, Ribbon Reversing 19 |
| 153841 | Screw, 6-40 x 9/16 Hex 20 | 156163 | Guide 9 | 156462 | Bail, Oscillating 15 |
| 154235 | Spring 28 | 156165 | Washer, Felt 2, 5, 12 | 156465 | Washer, Spring 3, 4 |
| 154242 | Screw, 6-40 x 5/16 Hex 3, 4 | 156168 | Spring 9 | 156466 | Rack, Typewheel 14 |
| 154245 | Spring, Contact 28 | 156169 | Washer, Felt 12 | 156467 | Ring, Retaining 3, 4 |
| 154246 | Bracket, Contact 28 | 156172 | Rod 10 | 156472 | Post, Spring 2, 5 |
| 154247 | Contact Assembly 28 | 156173 | Stud 9 | 156473 | Shaft, Main 7 |
| 154325 | Modification Kit to Provide an Adjustable Ribbon Drive Arm 19 | 156177 | Bracket, Contact 24 | 156476 | Hammer, Print 14 |
| 154335 | Screw, 6-40 x 9/32 Fil 7, 8 | 156221 | Lock 18 | 156478 | Accelerator, Hammer 14 |
| 154352 | Spring 28 | 156230 | Stud, Lifter Pivot 21 | 156484 | Bracket 21, 27 |
| 154397 | Shaft w/Bearing 3, 7, 8 | 156235 | Post, Guide 2, 5 | 156488 | Post, Spring 21 |
| 154398 | Bearing, Needle 7, 8 | 156236 | Collar 7, 8 | 156489 | Bushing, Ribbon Guide 14 |
| 154457 | Guide, Tape 11 | 156241 | Link, Front 14 | 156490 | Post, Guide 2, 5 |
| 154694 | Disk, Clutch Cam 7 | 156242 | Link, Rear 14 | 156492 | Bracket, Guide 13 |
| 154698 | Wick, Felt 11 | 156243 | Roller, Lifter Arm 21 | 156493 | Stud 15 |
| 155750 | Sleeve, 3/32 ID x 1/2" Lg Insulating 24, 27 | 156248 | Latch 2, 5 | 156501 | Screw, 6-40 x 7/32 Fil 13, 14 |
| 155753 | Sleeve, 1/8 ID x 1/2" Lg Insulating 28 | 156252 | Lifter, Function Blade 21 | 156515 | Washer, Felt 20 |
| 155995 | Screw, 6-40 Shoulder 2, 4 | 156264 | Lever, Detent 13, 16 | 156536 | Screw, 4-40 x 1/8 Fil 17 |
| 156008 | Wheel, Feed 11 | 156265 | Bushing, Shoulder 16 | 156558 | Washer, Felt 14 |
| 156009 | Post, Slide 12 | 156266 | Bushing, Shoulder 13, 16 | 156572 | Washer, Felt 26 |
| 156012 | Spring, Punch Block 10 | 156267 | Lever, Trip 2, 5 | 156576 | Washer, Felt 3, 4 |
| 156013 | Screw, 4-40 Spl 12 | 156268 | Bracket, Spring 17 | 156577 | Roller, Detent Lever 11 |
| 156015 | Plate, Spring 9 | 156276 | Eccentric, Right Rotary 13 | 156740 | Screw, 6-40 x 7/32 Hex 23 |
| 156016 | Link, Front Drag 11, 12 | 156277 | Eccentric, Left Rotary 13 | 156835 | Ring, Retaining 14 |
| 156017 | Shaft, Eccentric 12 | 156278 | Eccentric 16 | 156869 | Guide, Ribbon 14 |
| 156019 | Washer, Felt 11 | 156286 | Shaft, Right Eccentric 13 | 156870 | Lever, Ribbon Oscillating 15 |
| 156020 | Slide 9 | 156287 | Shaft, Left Eccentric 13 | 156871 | Bail, Operating Blade 3 |
| 156024 | Plate, Rear 9, 11, 12 | 156288 | Shaft, Axial Eccentric 16 | 156872 | Blade, Operating 3 |
| 156028 | Plate, Front 9, 10, 11, 23, 24, 25 | 156289 | Bearing, Left Front 13 | 156874 | Screw, 4-40 x 15/16 Fil 13, 16 |
| 156036 | Guide, Tape 11 | 156290 | Bearing, Right Front 13 | 156875 | Screw, 6-40 x 5/32 Fil 16 |
| 156040 | Post 11 | 156291 | Bearing, Rear 13 | 156876 | Bushing 3 |
| 156042 | Post, Spacing 11 | 156292 | Housing, Upper Axial 16 | 156877 | Washer, Felt 3 |
| 156043 | Bushing 12 | 156293 | Housing, Lower Axial 16 | 156884 | Arm, Rocker 12 |
| 156044 | Stud, Die Wheel 11 | 156294 | Sector, Axial 15 | 156899 | Stud, Eccentric 3 |
| 156045 | Shaft, Feed Wheel 11 | 156296 | Post, Retaining 17 | 156900 | Roller 3 |
| 156046 | Block, Tape Guide 9 | 156300 | Shaft 17 | 156901 | Post, Eccentric 19 |
| 156047 | Spring, Torsion 11 | 156306 | Rod, Right Connecting 14 | 156905 | Block, Rack Guide 14 |
| 156050 | Stud, Eccentric 11 | 156311 | Rod, Left Connecting 14 | 156908 | Post, Sector Pivot 15 |
| 156051 | Bushing, Eccentric 12 | 156313 | Rack, Axial Output 16 | 156909 | Post, Toggle Link 15 |
| 156052 | Shoe, Tape 11 | 156316 | Plate, Rear 17, 28 | 156922 | Arm, Lock Release 17 |
| 156054 | Lever, Detent 11 | 156318 | Lever, Reset 2 | 156931 | Bracket, Hammer Mounting 14 |
| 156055 | Wheel, Die 11 | 156321 | Shaft, Oscillating 15 | 156937 | Link, Printing Drive 3, 21 |
| 156057 | Washer, Flat 17 | 156322 | Link, Axial Toggle 15 | 156938 | Screw, 6-40 Eccentric Shoulder 21 |
| 156058 | Link, Rear 12 | 156332 | Shaft, Typewheel 14 | 156948 | Wick, Felt 15 |
| 156060 | Shaft, Eccentric 12 | 156366 | Shaft, Rocker Bail 3, 4 | 156987 | Screw, 6-40 Spl 3, 4 |
| 156061 | Arm, Tape Shoe 11 | 156369 | Lever, Adjusting 15 | 156988 | Race, Outer 3, 4 |
| 156062 | Post, Pivot 11 | 156382 | Roller, Guide 15 | 156989 | Bearing 3, 4 |
| 156067 | Guide, Slide Post 12 | 156389 | Gear, 16T 14 | 156990 | Race, Inner 3, 4 |
| 156069 | Plate 9 | 156390 | Washer, Flat 14 | 156994 | Strip, Felt 3, 4 |
| 156070 | Bail, Toggle 12 | 156396 | Eccentric 3, 21 | 156995 | Post 3, 4 |
| 156077 | Plate w/Post 12 | 156399 | Nut, 6-40 Shoulder 3 | 156998 | Retainer, Roller 3, 4 |
| 156089 | Slide w/Insulator 9, 24 | 156403 | Disk, Bearing 3, 4 | 157252 | Bushing 20 |
| 156090 | Screw, 6-40 Adjusting 9, 11 | 156408 | Arm, Clamp 14 | 158169 | Frame 4, 5, 8 |
| 156093 | Washer, Felt 12 | 156412 | Link, Drive 3, 4 | 158171 | Shaft w/Bearing 2, 4 |
| 156094 | Link, Front 12 | 156413 | Link, Drive 21 | 158172 | Lever, Latch 2, 5 |
| 156095 | Bushing 12 | 156414 | Plate, Ribbon Feed Mounting 19 | 158177 | Collar 8 |
| 156099 | Link, Rear Drag 12 | 156419 | Shaft, Left Ribbon Ratchet 19 | 158180 | Cam w/Pins 8 |
| 156103 | Strip, Felt 12 | 156421 | Shaft, Right Ribbon Ratchet 19 | 158182 | Disk, Clutch Cam 8 |
| | | 156426 | Washer, Spring 19 | 158184 | Drum, Function Clutch 7, 8 |
| | | 156427 | Disk, Friction 19 | 158185 | Gear, 49T 8 |
| | | 156428 | Washer, Felt 19 | 158186 | Screw, 4-40 x 7/32 Fil 8 |
| | | 156433 | Pawl, Ribbon Feed 19 | 158257 | Cable Assembly 24 |

NUMERICAL INDEX (Continued)

| Part Number | Description and Page Number | Part Number | Description and Page Number | Part Number | Description and Page Number |
|-------------|-----------------------------------|-------------|-------------------------------------|-------------|-----------------------------|
| 158285 | Connector, 20 Pt Plug 24 | 159519 | Bushing, Drive Bail 15 | 159976 | Armature 23 |
| 158745 | Clamp, Bearing 3, 4 | 159522 | Bushing, Drive Bail 15 | 159977 | Hinge 23 |
| 158760 | Post, Spring 23 | 159523 | Bail, Oscillating Drive 15, 16 | 159978 | Shaft 23 |
| 158772 | Screw, 4-40 x 5/8 Hex 18 | 159525 | Bracket, Axial Mounting 14 to 16 | 159979 | Arm, Non-Repeat 23 |
| 158881 | Nut, 6-40 Shoulder 2, 4 | 159526 | Link, Oscillating 16, 21 | 159980 | Post, Spring 23 |
| 158925 | Slide, Tape Depressor 9 | 159528 | Bar, #5 Push 13 | 159981 | Spacer, .109" Thk 9 |
| 158941 | Bail, Rocker 4 | 159529 | Bar, #3 Push 13 | 159987 | Bracket, Guide 9 |
| 158950 | Contact Assembly, Code Reading 24 | 159530 | Bar, #4 Push 13 | 159988 | Plate, Adjusting 11 |
| 159011 | Bracket, Spring 2, 5 | 159531 | Bar, LTRS Push 13 | 159989 | Post, Shoe Pivot 11 |
| 159336 | Shield, Contact 24 | 159532 | Bar, FIGS Push 13 | 159990 | Bail, Guide 11 |
| 159338 | Spacer, .250" Thk 26 | 159535 | Plate, Front 13, 14, 16, 17, 19, 20 | 159994 | Plate, Lifter Arm Lock 21 |
| 159341 | Bearing, Ball 3, 4 | 159536 | Gear, 15T 14 | 159995 | Arm, Lifter 21 |
| 159360 | Modification Kit 1, 28 | 159539 | Arm, Printing Pivot 21 | 159997 | Screw, 6-40 Eccentric 21 |
| 159363 | Modification Kit 1, 9 | 159544 | Release, Clutch 2, 5 | 160185 | Post 26 |
| 159364 | Modification Kit 1, 23 | 159560 | Spring 9 | 160354 | Cam, Function 7 |
| 159365 | Modification Kit 9 | 159565 | Bracket w/Post 26 | 160404 | Spring, Contact 28 |
| 159379 | Modification Kit 1, 24 | 159568 | Bracket, Contact 26 | 160581 | Lever, Upper Reset 5 |
| 159381 | Modification Kit 1, 26 | 159570 | Spring, Contact 26 | 160666 | Guard, Backspace 24 |
| 159382 | Modification Kit 1, 26 | 159571 | Stiffener 26 | 160672 | Stud 24 |
| 159404 | Post 16 | 159575 | Bracket, Stop 26 | 160673 | Shaft, Feedwheel 24 |
| 159411 | Bearing Assembly 3, 4 | 159578 | Bail, Front Contact 26 | 160674 | Nut, 6-40 Shoulder 9, 24 |
| 159413 | Plate, Ribbon Reversing 19 | 159579 | Bail, Rear Contact 26 | 160839 | Spacer, Shoulder 3 |
| 159427 | Bracket, Stop 2, 5 | 159580 | Shaft, Actuating Bail 26 | 160843 | Spring 20 |
| 159430 | Lever, Slide Trip 2, 5 | 159597 | Washer, Flat 15 | 160846 | Bushing, Shoulder 15 |
| 159434 | Plate, Lifter Mounting 21 | 159601 | Bracket, Spring 26 | 160881 | Modification Kit 1, 24 |
| 159437 | Arm, FIGS Yield 17 | 159621 | Screw, 6-40 Shoulder 9 | 160943 | Housing, Typewheel Shaft 14 |
| 159438 | Arm, LTRS Yield 17 | 159622 | Clamp, Adjusting 9 | 160944 | Washer, Felt 26 |
| 159441 | Guide, Bellcrank 2 | 159625 | Bracket, Bail Guide 3, 4 | 160948 | Screw, 2-56 Spl 11 |
| 159447 | Bellcrank, #1 and #4 17 | 159626 | Extension, Drive Link 21 | 160997 | Roller 26 |
| 159448 | Bellcrank, #2 17 | 159641 | Cable w/Terminals 28 | 160998 | Arm 26 |
| 159450 | Bellcrank, #3 and #5 17 | 159642 | Shim, .008" Thk 13 | 161100 | Spring, Contact 26 |
| 159459 | Spring 18 | 159643 | Shim, .008" Thk 16 | 161102 | Spring, Contact 26 |
| 159460 | Link, Toggle 17 | 159653 | Blade, Signal Bell Function 28 | 161107 | Stud 11 |
| 159468 | Arm, Lock 17 | 159654 | Latch, Printing 21 | 161108 | Stud 9 |
| 159470 | Shaft, Lock Arm 17 | 159656 | Block Assembly, Punch 10 | 161109 | Post, Guide 11, 12 |
| 159471 | Bellcrank, LTRS-FIGS 17 | 159658 | Screw, 6-40 x 1-3/32 Hex 14 | 161139 | Nut, 6-40 Hex 11 |
| 159472 | Plate, Main 2, 5, 14, 17, 18, 24 | 159659 | Shaft, Eccentric 14 | 161323 | Housing, Gear 14 |
| 159476 | Arm, FIGS 17 | 159861 | Frame, Main 2, 3, 13, 16, 21, 27 | 161324 | Washer, Flat 14 |
| 159477 | Arm, LTRS 17 | 159886 | Gear, 49T 7 | 161334 | Lever, Stop 27 |
| 159480 | Bushing, Eccentric 14 | 159896 | Collar 7 | 161335 | Solenoid Assembly 27 |
| 159481 | Arm, FIGS Extension 17 | 159900 | Plate 9 | 161336 | Bracket 27 |
| 159482 | Arm, LTRS Extension 17 | 159901 | Plate w/Post 9 | 161337 | Post, Stop 27 |
| 159483 | Bracket, Spring 17 | 159902 | Shaft, Rake 9 | 161338 | Lever, Trip 27 |
| 159487 | Plate, Function Box Front 17, 28 | 159903 | Bellcrank 9 | 161339 | Lever, Hand 27 |
| 159488 | Bracket, Transfer Mounting 18 | 159909 | Pawl, Feed 9 | 161340 | Modification Kit 1, 27 |
| 159489 | Plate, #1 18 | 159910 | Latch, Return 9 | 161341 | Modification Kit 1, 27 |
| 159490 | Plate, #4 18 | 159911 | Plate 9 | 161347 | Washer, Felt 17 |
| 159491 | Plate, #2 18 | 159912 | Gear, Segment 9 | 161431 | Lever, Rotary Correcting 14 |
| 159492 | Plate, #0 18 | 159913 | Screw, 6-40 Eccentric 9, 25 | 161440 | Spring 16 |
| 159493 | Plate, #5 18 | 159916 | Eccentric 9 | 161443 | Detent, Axial Shaft 16 |
| 159494 | Plate, #3 18 | 159954 | Link, Adjusting 23 | 161444 | Detent, Rotary Shaft 13 |
| 159495 | Beam, #5 Pulse 18 | 159955 | Link, Drive 23 | 161493 | Post, Supporting 24 |
| 159496 | Beam, #3 Pulse 18 | 159956 | Post 23 | 161524 | Shaft, Hammer 14 |
| 159497 | Beam, #2 Pulse 18 | 159957 | Link 23, 24 | 162092 | Bail, Tape Guide 11 |
| 159498 | Lever, #5 Pulse 18 | 159958 | Latch 23 | 162093 | Spring, Torsion 11 |
| 159499 | Lever, #3, #4 and #5 Transfer 18 | 159959 | Extension 23 | 162340 | Sleeve 7, 8 |
| 159500 | Beam, #4 Pulse 18 | 159960 | Eccentric 23 | 162341 | Bearing 7 |
| 159501 | Beam, #1 Pulse 18 | 159961 | Arm, Eccentric 23 | 162346 | Extension, Adjustable 19 |
| 159502 | Guide, Transfer Lever 18 | 159962 | Ring, Retaining 23 | 162347 | Arm, Ribbon Drive 19 |
| 159503 | Shaft 17 | 159963 | Hub 23 | 162350 | Bail, Rocker 3 |
| 159504 | Spacer, .037" Thk 18 | 159965 | Arm, Adjusting 23 | 162362 | Blade, Space Function 28 |
| 159506 | Post 3 | 159973 | Bracket w/Bushing 23 | 162363 | Stripper 28 |
| 159508 | Lever, #1 and #2 Transfer 18 | 159974 | Eccentric 23 | 162364 | Bearing 8 |
| 159512 | Link, Printing Trip 21 | 159975 | Bail, Armature 23 | 162375 | Modification Kit 1, 28 |
| 159515 | Blade, FIGS Function 17 | | | 162466 | Shield, Rear End 6 |
| 159516 | Blade, LTRS Function 17 | | | 162467 | Shield, Front End 6 |
| | | | | 162573 | Retainer 8 |

NUMERICAL INDEX (Continued)

| Part Number | Description and Page Number | Part Number | Description and Page Number | Part Number | Description and Page Number |
|-------------|--------------------------------|-------------|-----------------------------|-------------|-------------------------------|
| 162763 | Bail, Reset 12 | 173338 | Modification Kit 8 | 175712 | |
| 162850 | Handle 19, 20 | 173340 | Collar 7, 8 | thru | |
| 162862 | Bar, Mounting 2, 26 | 173754 | Spacer 14 | 175716 | Typewheel 29 |
| 162863 | Sleeve, Blocking 28 | 173755 | Guide, Ribbon 14 | 175718 | |
| 162886 | Screw, 4-40 x 7/32 Hex 17, 28 | 173756 | Lever, Print Hammer 14 | thru | |
| 163009 | Pinion, 21T 4 | 173770 | Block Assembly, Punch 10 | 175724 | Typewheel 29 |
| 163010 | Gear, 49T 8 | 173775 | Shaft, Typewheel 14 | 175727 | |
| 163015 | Pinion, 28T 2 | 173965 | Typewheel, ARA 29 | thru | |
| 163016 | Gear, 49T 7 | 173967 | Typewheel, AWA 29 | 175736 | Typewheel 29 |
| 163113 | Washer, Flat 14 | 173968 | Typewheel, ARJ 29 | 175739 | |
| 163290 | Cable Assembly 24 | 173969 | Typewheel, ARS 29 | thru | |
| 163327 | Ring, Retaining 27 | 173970 | Typewheel, ARE 29 | 175752 | Typewheel 29 |
| 163429 | Screw, 6-40 Shoulder 21 | 173971 | Typewheel, ARC 29 | 176138 | Modification Kit 14 |
| 163675 | Typewheel, ARK 29 | 173977 | Shaft, Print Hammer 14 | 176252 | Washer, Flat 3 |
| 163676 | Typewheel, ARL 29 | 173978 | Spring, Torsion 14 | 176489 | Guide 2, 3, 13 |
| 163677 | Typewheel, ARM 29 | 173979 | Head, Hammer 14 | 176490 | Bracket w/Hubs 2, 5, 26 |
| 163678 | Typewheel, ARP 29 | 173980 | Lever, Print Hammer 14 | 176647 | Latch w/Hub 23 |
| 163679 | Typewheel, ARZ 29 | 173981 | Accelerator, Hammer 14 | 176658 | Motor, 115V. 60 Cycle, AC 6 |
| 163680 | Typewheel, ART 29 | 175500 | | 176679 | Capacitor, 3.3 MFD 6 |
| 163681 | Typewheel, ARY 29 | thru | | 176686 | Frame 6 |
| 163682 | Typewheel, ARX 29 | 175507 | Typewheel 29 | 176687 | Bracket, Motor 6 |
| 163683 | Typewheel, ARW 29 | 175510 | | 176688 | Plate, Mounting 6 |
| 163684 | Typewheel, ARV 29 | thru | | 176689 | Bracket, Mounting 6 |
| 163685 | Typewheel, AWB 29 | 175518 | Typewheel 29 | 176747 | Gear, 42T 8 |
| 163686 | Typewheel, AWC 29 | 175519 | Typewheel, AXW 29 | 176749 | Gear, 14T 6 |
| 163687 | Typewheel, AWD 29 | 175520 | | 176823 | Bushing 6 |
| 163688 | Typewheel, AWE 29 | thru | | 178178 | Lever, Adjusting 20 |
| 163689 | Typewheel, ARU 29 | 175529 | Typewheel 29 | 178916 | Bellcrank 25 |
| 163690 | Typewheel, AWF 29 | 175531 | | 178917 | Modification Kit 1, 25 |
| 164511 | Lever w/Hub 11 | thru | | 178918 | Modification Kit 1, 25 |
| 164513 | Pawl, Feed 12 | 175539 | Typewheel 29 | 178919 | Pawl, Backspace 25 |
| 164514 | Guide, Tape 9 | 175543 | Typewheel 29 | 178920 | Post, Eccentric 25 |
| 164515 | Spring, Torsion 11 | 175544 | Typewheel 29 | 178921 | Plate w/Post 25 |
| 164521 | Plate w/Studs 20 | 175546 | Typewheel, AXX 29 | 178922 | Nut, 6-40 Shoulder 25 |
| 164525 | Post, Spring 20 | 175547 | Typewheel, AYZ 29 | 178923 | Bellcrank Assembly 25 |
| 164526 | Slide w/Post 20 | 175550 | Typewheel 29 | 178924 | Shaft 25 |
| 164528 | Bushing 20 | 175552 | | 178925 | Ratchet, 24T 25 |
| 164529 | Lever, Ribbon Reverse 20 | thru | | 178926 | Screw, 2-56 Spl 25 |
| 164530 | Bushing 20 | 175574 | Typewheel 29 | 178927 | Clamp, Adjusting 25 |
| 164531 | Pawl, Check 20 | 175576 | Typewheel 29 | 178930 | Guard 25 |
| 164532 | Pawl, Feed 20 | 175577 | Typewheel 29 | 178931 | Post 25 |
| 164535 | Shaft, Right Ribbon Ratchet 20 | 175578 | Typewheel 29 | 178932 | Post, Supporting 25 |
| 164538 | Shaft, Left Ribbon Ratchet 20 | 175579 | Typewheel 29 | 179274 | Wheel, Feed 11 |
| 164539 | Spring, Ratchet 20 | 175581 | | 179573 | Nut, 6-40 Hex 12 |
| 164540 | Detent 20 | thru | | 179579 | Decalomania, Arrow 20 |
| 164541 | Arm, Ribbon Drive 20 | 175593 | Typewheel 29 | 192661 | Post 3, 4 |
| 164543 | Lever, Adjustable Extension 20 | 175595 | | 192709 | Link w/Hub 3, 4 |
| 164964 | Washer, Felt 20 | thru | | 192793 | Guard 26 |
| 164965 | Washer, Flat 20 | 175634 | Typewheel 29 | 192849 | Bar, #2 Push 16 |
| 170199 | Bracket, Anchor 11 | 175636 | | 192877 | Bushing, Guide 14 |
| 170219 | Stud, Die Wheel 11 | thru | | 193804 | Armature 23 |
| 170241 | Screw, 6-40 Adjusting 11 | 175640 | Typewheel 29 | 193821 | Bracket w/Post 23 |
| 170242 | Slide, Feed Hole Punch 9 | 175642 | | 193822 | Clamp 23 |
| 170246 | Slide w/Insulator 9 | thru | | 193824 | Latch w/Hub 23 |
| 170247 | Guide 9 | 175653 | Typewheel 29 | 193825 | Magnet Assembly, Backspace 23 |
| 170778 | Block Assembly, Punch 11 | 175655 | | thru | |
| 170779 | Wheel, Feed 11 | thru | | 193879 | Bar, #1 Push 16 |
| 170788 | Wheel, Die 11 | 175667 | Typewheel 29 | 193966 | Bracket w/Stud 22 |
| 170803 | Bail, Retractor 10 | 175669 | | 193968 | Post 22 |
| 172638 | Screw, 6-40 x 9/32 Hex 9 | thru | | 193969 | Post 22 |
| 172640 | Modification Kit 1, 9 | 175672 | Typewheel 29 | 193972 | Extension w/Stud 22 |
| 172983 | Bracket, Spring 12 | 175674 | | 193974 | Depressor, Tape 22 |
| 172984 | Bracket, Spring 10 | thru | | 193976 | Bail, Rocker 4 |
| 172993 | Spring 10 | 175701 | Typewheel 29 | 193987 | Bracket, Roller 22 |
| 173200 | Sleeve, Bearing 7 | 175705 | | 194117 | Plate, Clamp 22 |
| 173203 | Sleeve, Bearing 8 | thru | | 194118 | Spring, Torsion 22 |
| 173336 | Modification Kit 7 | 175710 | Typewheel 29 | 194122 | Platform w/Guide, Tape 22 |

NUMERICAL INDEX (Continued)

| Part Number | Description and Page Number | Part Number | Description and Page Number | Part Number | Description and Page Number |
|-------------|-----------------------------|-------------|-----------------------------|-------------|--------------------------------|
| 194123 | Screw, 4-40 Spl 22 | 305638 | Bracket, Guide 12 | 307340 | |
| 194162 | Bail, Reset 12 | 307300 | | thru | |
| 194992 | Modification Kit 9, 10 | | | 307351 | Typewheel 29 |
| 194993 | Guide, Tape 10 | 307312 | Typewheel 29 | 307353 | |
| 195233 | Roller 22 | 307314 | | thru | |
| 195235 | Bail, Rocker 3, 21 | | | 307358 | Typewheel 29 |
| 195284 | Ring, "O" 14 | 307323 | Typewheel 29 | 307360 | |
| 199506 | Gasket 10 | 307326 | | thru | |
| 304543 | Plate, Corrector 16 | 307338 | Typewheel 29 | 307384 | Typewheel 29 |
| | | | | 320410 | Terminal, Spade Type 6, 24, 28 |