

28 SKINTIGHT COVER (LPC)
KSR/RO
PARTS

BELL SYSTEM and TELETYPE CODE CROSS-REFERENCE		
Unit Description	Teletype Code	Bell System Code
Cover	LPC205**	28A**

PAINT FINISH COLOR CODE CHART (for parts and assemblies requiring a paint finish)									
Color	Finish Suffixes				Color	Finish Suffixes			
	Wrinkle Finish	Smooth Finish	Textured Vinyl	Smooth Vinyl		Wrinkle Finish	Smooth Finish	Textured Vinyl	Smooth Vinyl
Black	AA (37)	BB			Brussels Light Blue		EC		
Dark Brown	AD (38)				Medium Blue		ES		
Gray Green	AB (40)	BK	GA (45)		Cherry Red		EF		
Charcoal Gray	AL	BZ		HA	Pastel Yellow		EG		
Dark Gray			GB		White		EH		
Light Gray		EJ		HB (68)	Ivory		EM		
Beige Gray			GC		Beige		ET		
Light Beige		EL		HC	Rose Beige		ER		
Moss Green		EN		HD	Rose Pink		EU		
Eye Rest Green		EA			Dark Covert Gray				HE
Turquoise		EV			Light Olive Gray	EW		GE	HF (46)
Aqua Blue		EK			Fawn				HG

The double asterisk (**) denotes a painted part. Suffix to be applied following the part number. Number in parenthesis indicate Bell System code.

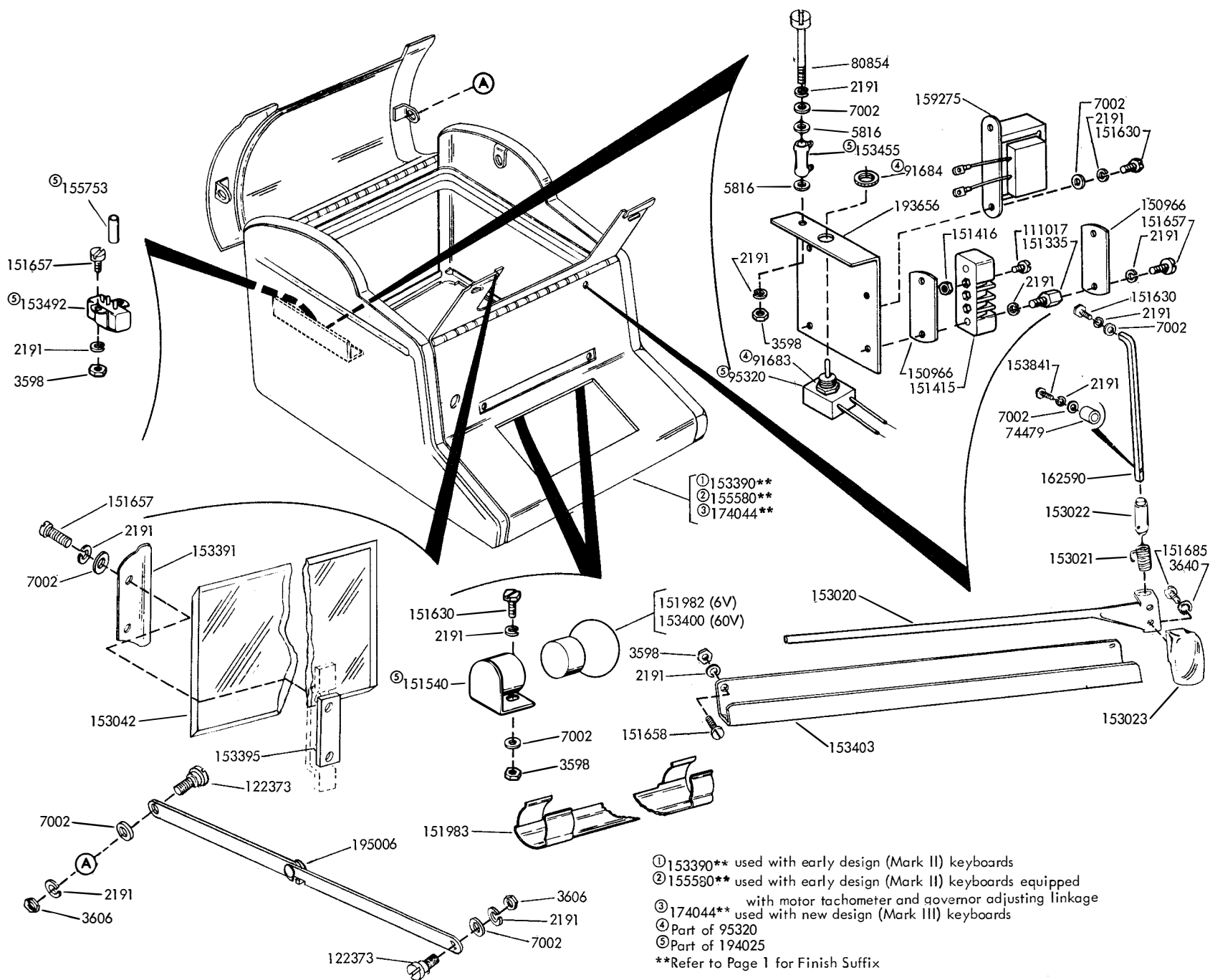
NOTE:

When ordering parts from this section,
prefix each number with the letters TP.

FIGURE	CONTENTS	Page
1	Send-Receive Skintight Cover (Rack Mounted)	3
2	Send-Receive Skintight Cover (Rack Mounted)	4
3	Send-Receive or Receive-Only Skintight Cover	5
4	Send-Receive or Receive Only Skintight Cover (Continued)	6
5	Cable Components	7
6	Base Plate and Electrical Service Unit Cover	8
7	Variable Features for Send-Receive Skintight Cover	9
8	164345** Modification Kit to Provide Auxiliary Terminal Blocks	10
9	195598 (3-1/4" to 5-1/2") and 195599 (5-1/4" to 8-1/2") Modification Kits to Provide Adjustable Stripper Form Guide	11
10	194321 Modification Kit to Provide a Rear Paper Guide on Units Equipped with an Electrical Service Unit Cover	12
	Numerical Index	13

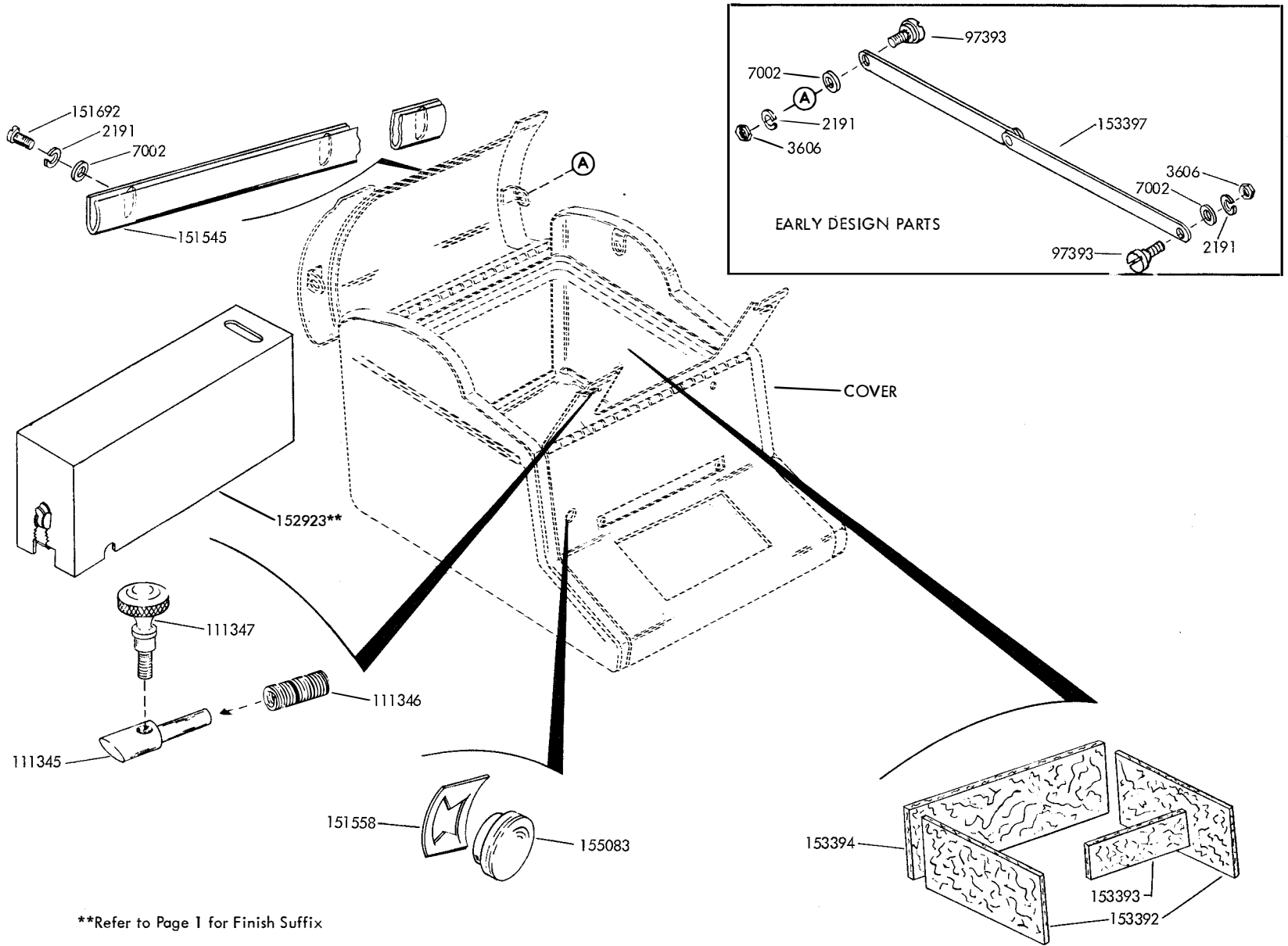
**See chart on page 1 for color suffix

FIGURE 1. SEND-RECEIVE SKINTIGHT COVER (RACK MOUNTED)



- ① 153390** used with early design (Mark II) keyboards
- ② 155580** used with early design (Mark II) keyboards equipped with motor tachometer and governor adjusting linkage
- ③ 174044** used with new design (Mark III) keyboards
- ④ Part of 95320
- ⑤ Part of 194025
- **Refer to Page 1 for Finish Suffix

FIGURE 2. SEND-RECEIVE SKINTIGHT COVER (RACK MOUNTED)



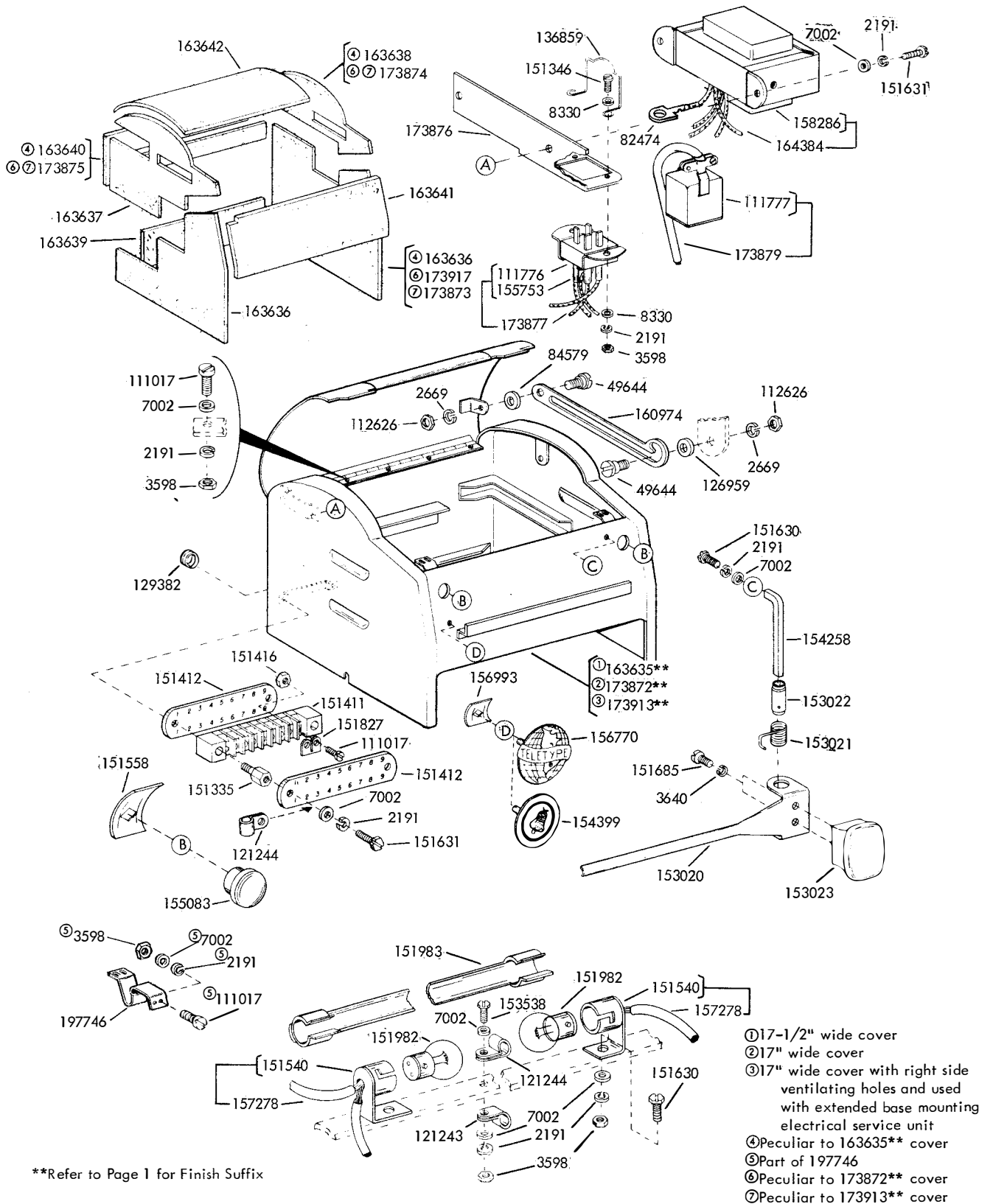


FIGURE 3. SEND-RECEIVE OR RECEIVE-ONLY SKINTIGHT COVER

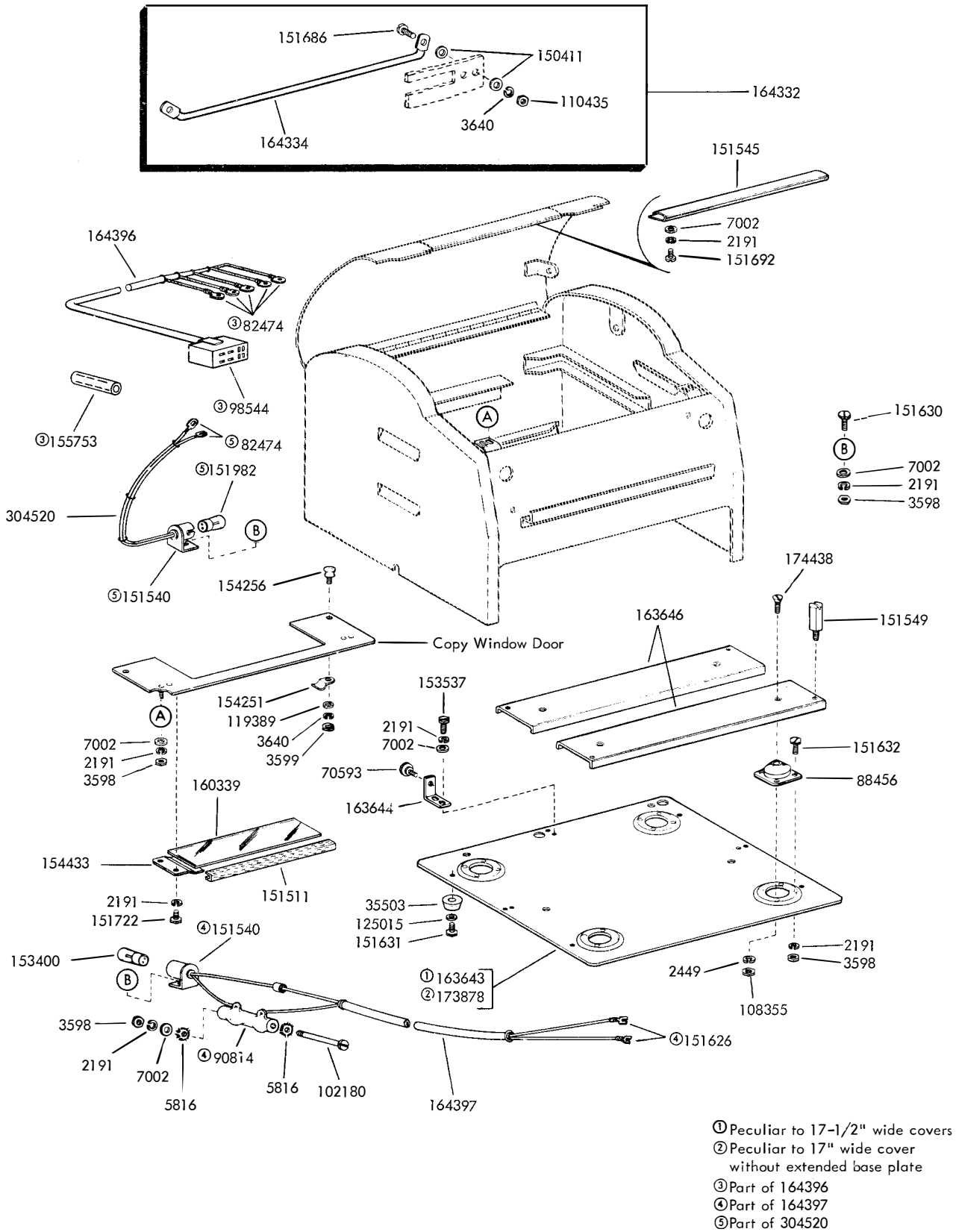


FIGURE 4. SEND-RECEIVE OR RECEIVE-ONLY SKINTIGHT COVER (Continued)

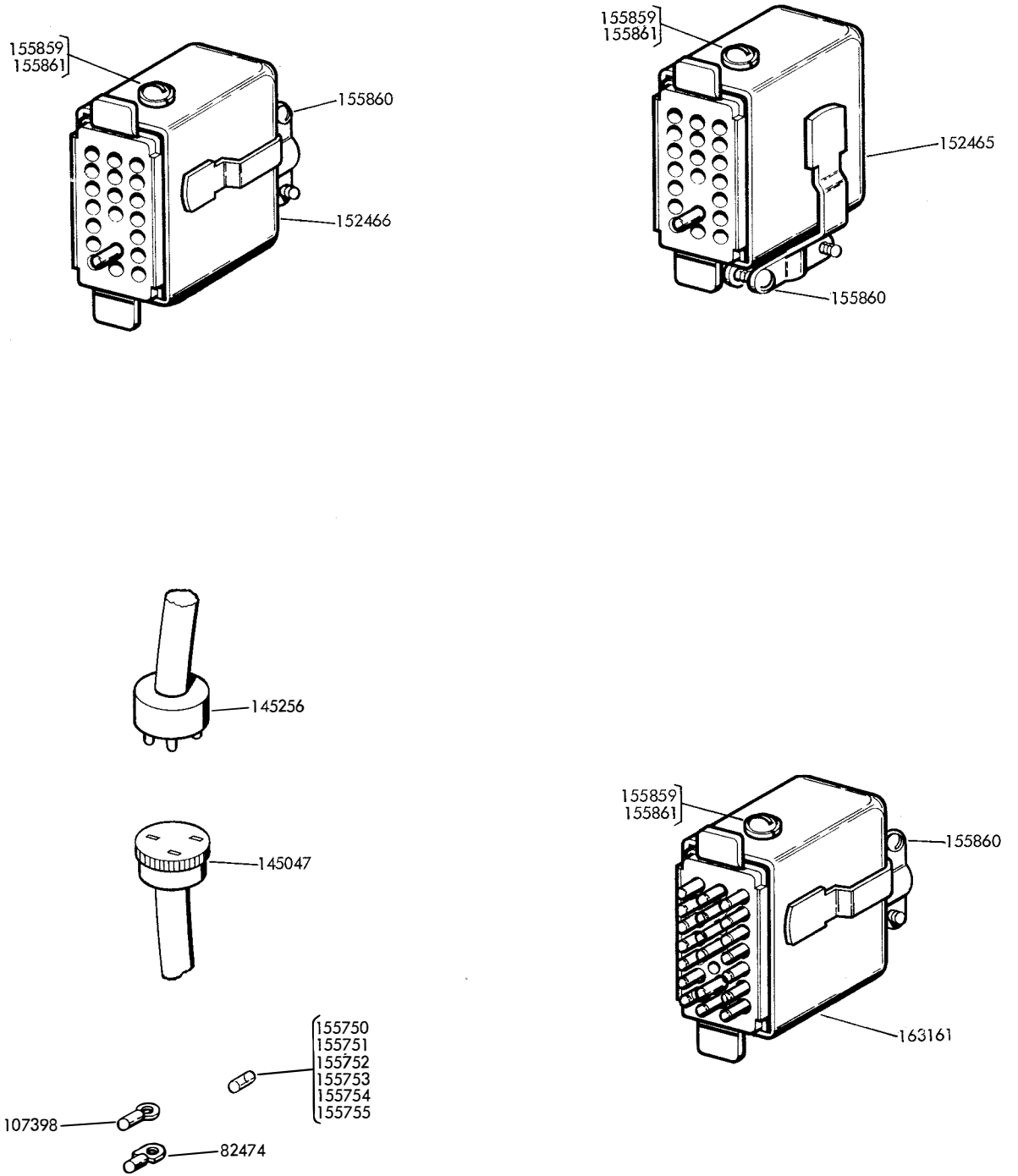
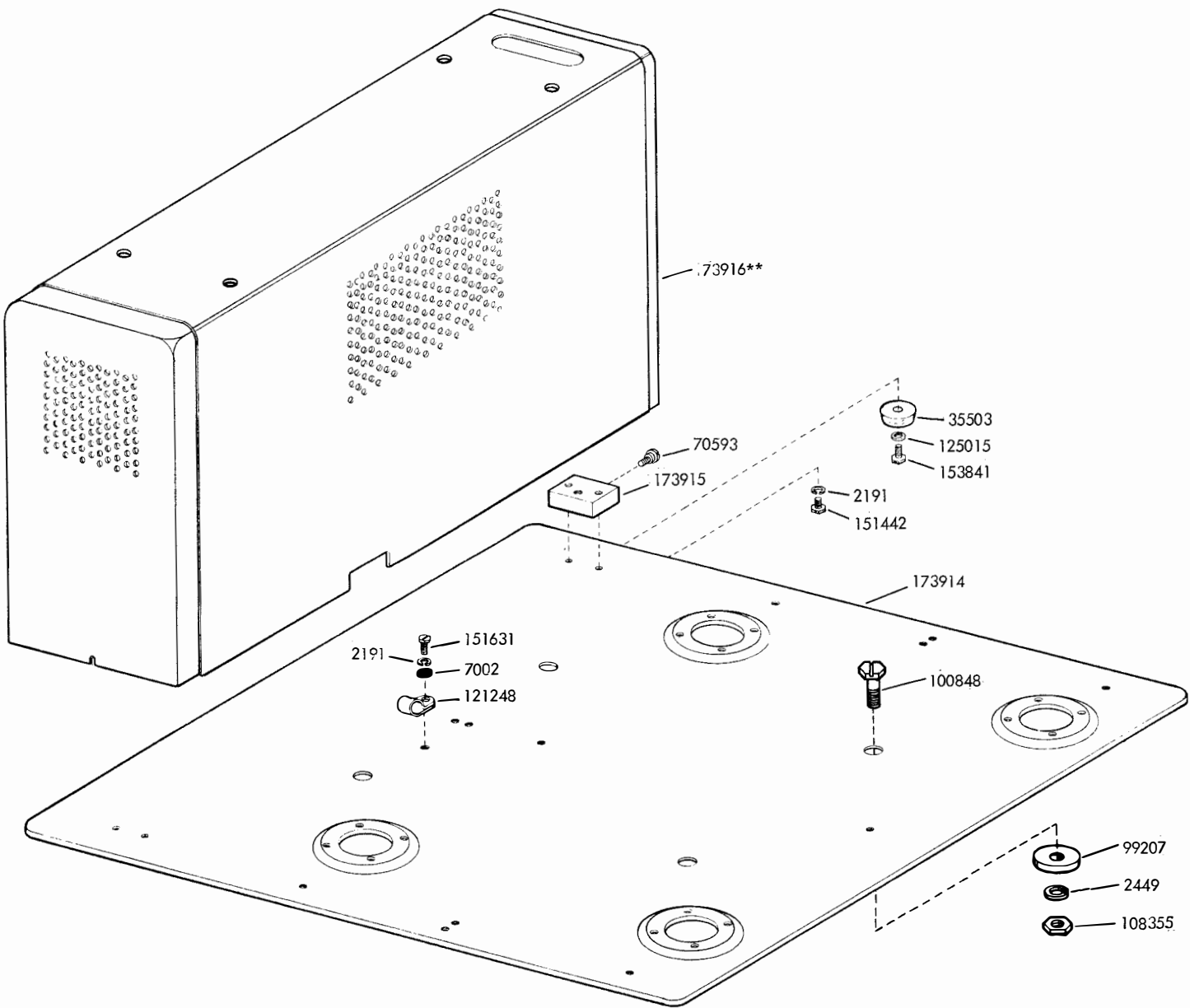
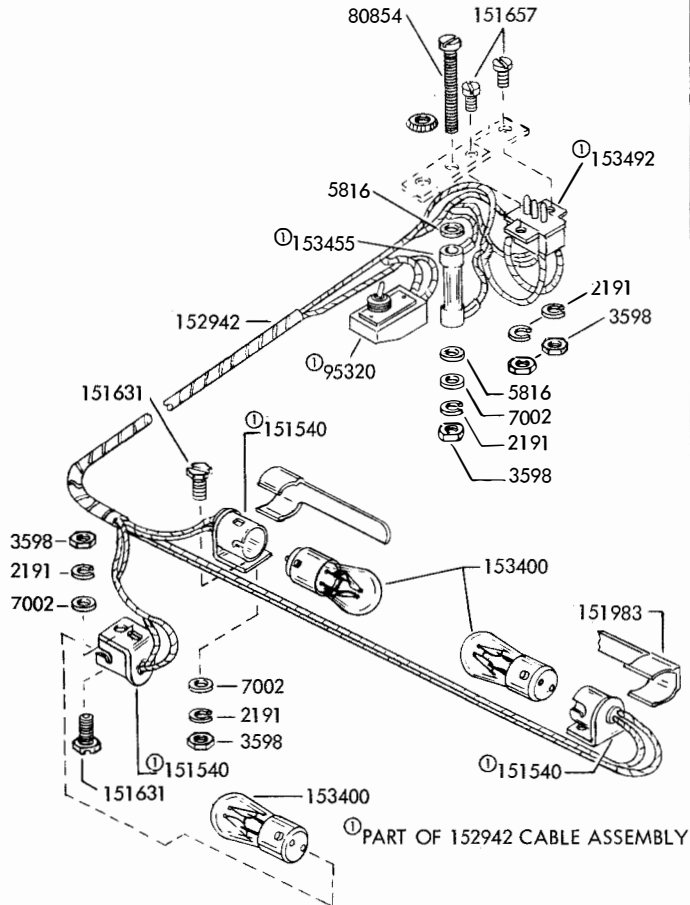


FIGURE 5. CABLE COMPONENTS

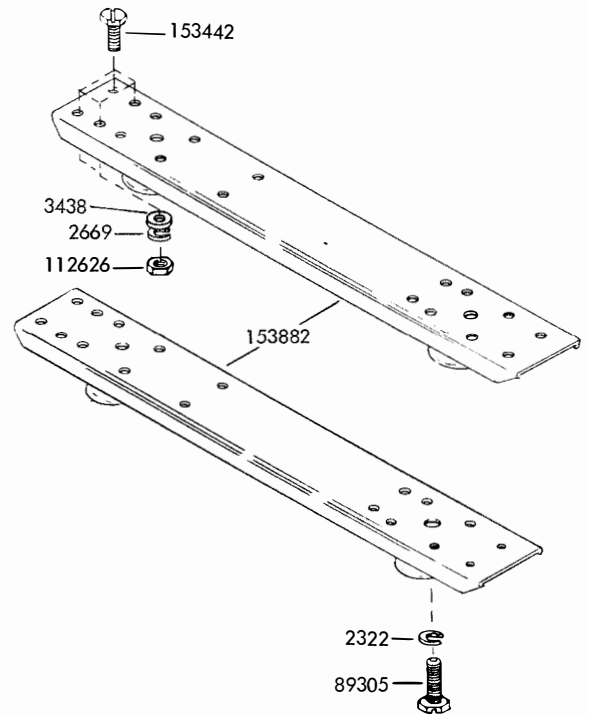


**Refer to Page 1 for Finish Suffix

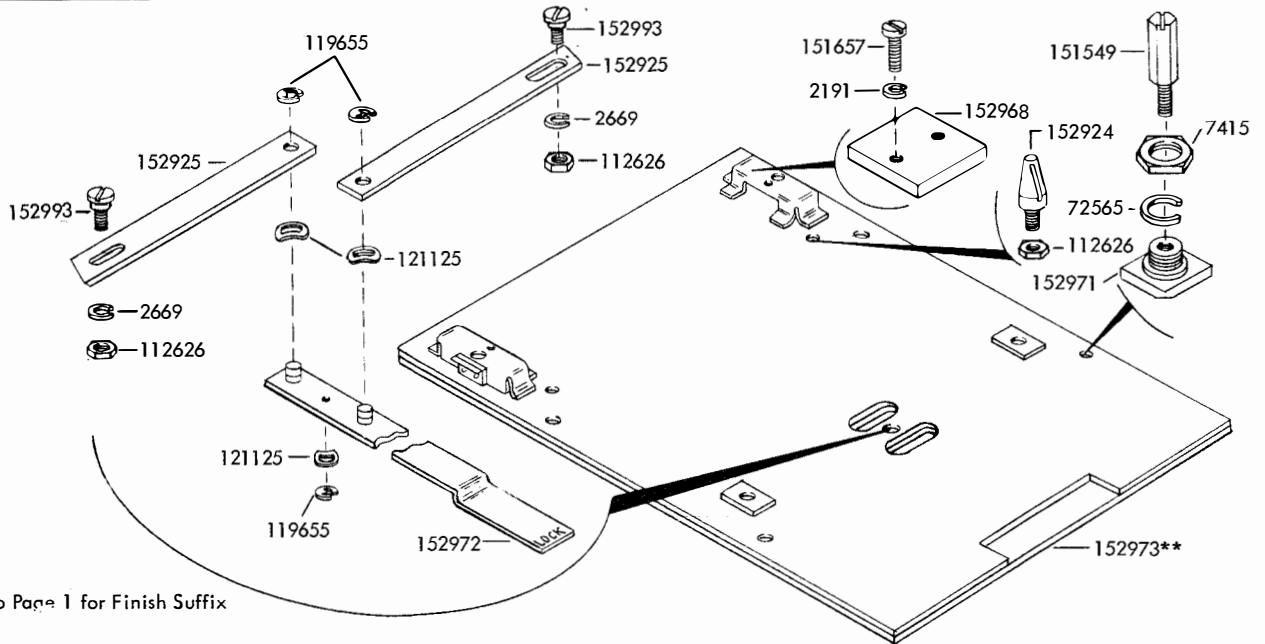
FIGURE 6. BASE PLATE AND ELECTRICAL SERVICE UNIT COVER



152314 MODIFICATION KIT TO PROVIDE COPY AND MARGIN LAMPS



152313 MODIFICATION KIT TO PROVIDE SHOCK MOUNTS



**Refer to Page 1 for Finish Suffix

152969** BASE PLATE ASSEMBLY

FIGURE 7. VARIABLE FEATURES FOR SEND-RECEIVE SKINTIGHT COVER

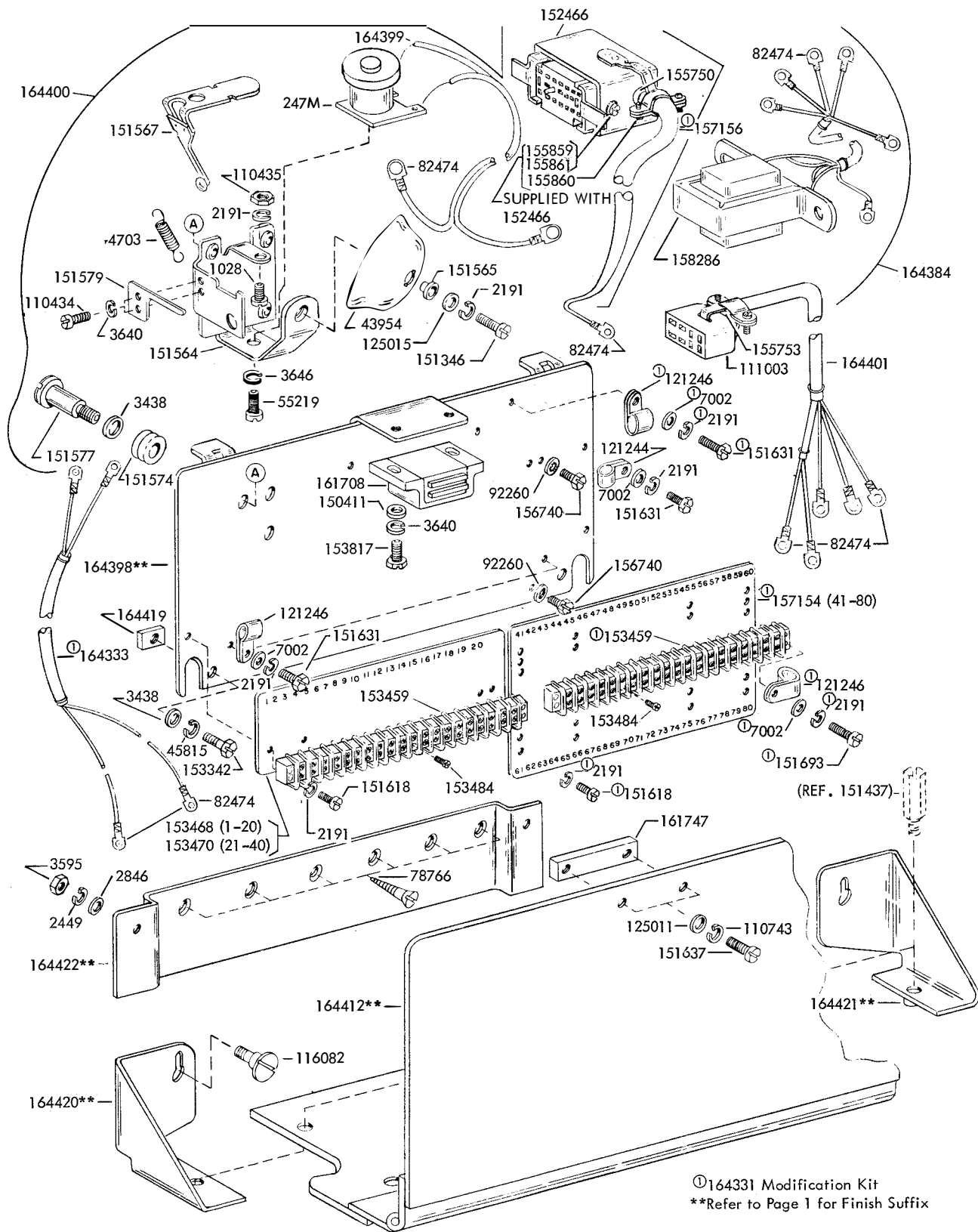
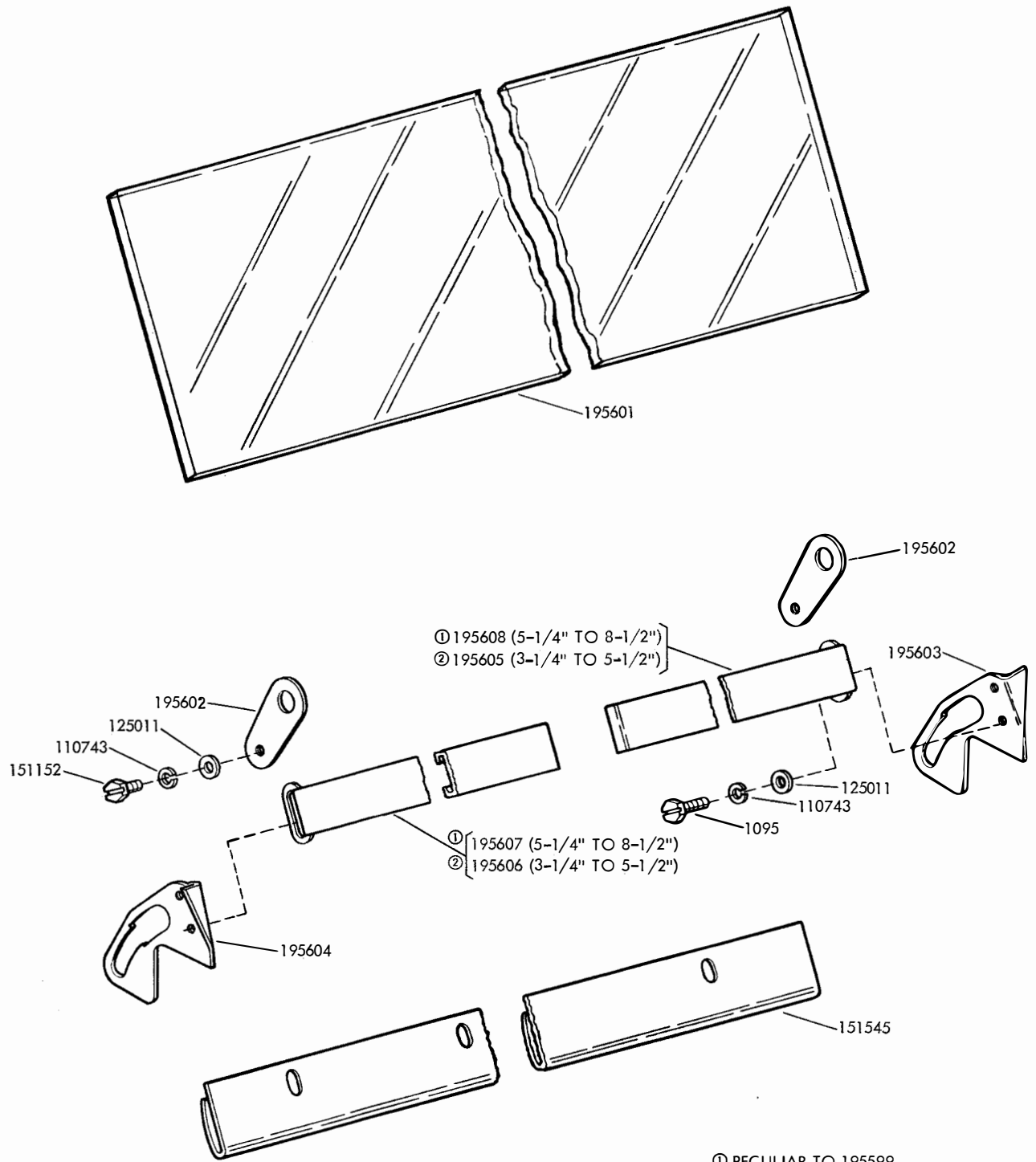
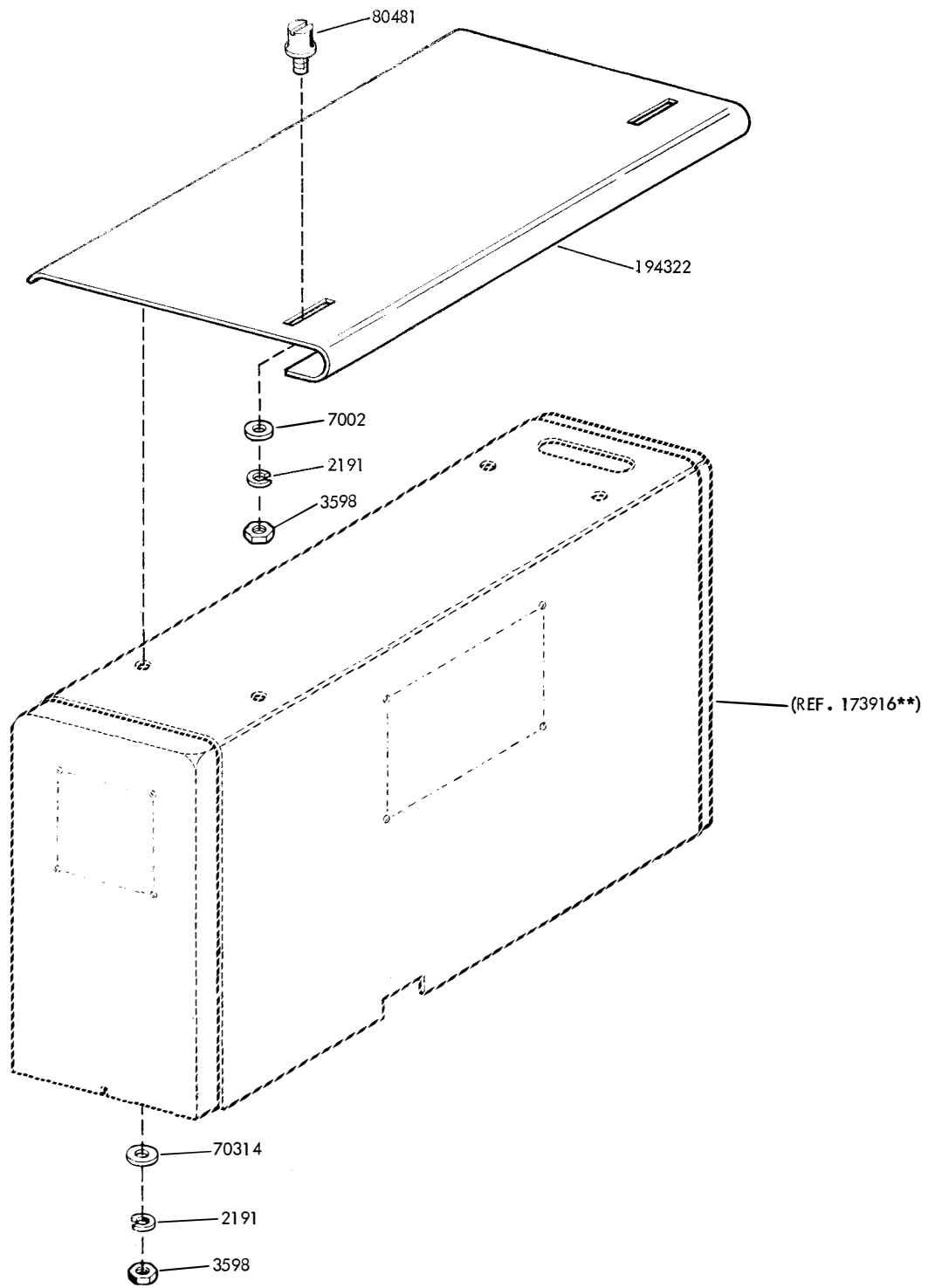


FIGURE 8. 164345** MODIFICATION KIT TO PROVIDE AUXILIARY TERMINAL BLOCKS



① PECULIAR TO 195599
 ② PECULIAR TO 195598
SPECIFICATION 501955

FIGURE 9. 195598 (3-1/4" to 5-1/2") and 195599 (5-1/4" to 8-1/2") MODIFICATION KITS TO PROVIDE ADJUSTABLE STRIPPER FORM GUIDE



Specification 50149S

FIGURE 10. 194321 MODIFICATION KIT TO PROVIDE A REAR PAPER GUIDE ON UNITS EQUIPPED WITH AN ELECTRICAL SERVICE UNIT COVER

NUMERICAL INDEX

Part Number	Description and Page Number	Part Number	Description and Page Number	Part Number	Description and Page Number
247M	Coil, Magnet 10	125011	Washer, Flat 10, 11	153391	Plate, Clamp 3
1028	Screw (4-40 x 1/4 Fil) 10	125015	Washer, Flat 6, 8, 10	153392	Pad, Side 4
1095	Screw (4-40 x 5/32 Hex) 11	126959	Washer, Flat 5	153393	Pad, Front 4
2191	Washer, Lock 3 to 6, 8 to 10, 12	129382	Grommet, Rubber 5	153394	Pad, Rear 4
2322	Washer, Lock 9	136859	Holder 5	153395	Plate, Nut 3
2449	Washer, Lock 6, 8, 9, 10	145047	Connector, Receptacle (3 Pt) 7	153397	Arm, Cover 4
2669	Washer, Lock 5, 9	145256	Connector, Plug (3 Pt) 7	153400	Lamp, Incandescent (60 V) 3, 6, 9
2846	Washer, Flat 10	150411	Washer, Flat 6, 10	153403	Tray 3
3438	Washer, Flat 9, 10	150966	Insulator (1-4) 3	153442	Screw (10-32 x 1/2 Hex) 9
3595	Nut (1/4-32 Hex) 10	151152	Screw (4-40 x 3/16 Hex) 11	153455	Resistor (600 Ohm) 3, 9
3598	Nut (6-40 Hex) 3, 5, 6, 9, 12	151335	Stud 3, 5	153459	Block, Terminal 10
3599	Nut (4-40 Hex) 6	151346	Screw (6-40 x 3/8 Fil) 5, 10	153468	Insulator (1-20) 10
3606	Nut (6-40 Hex) 3, 4	151411	Block, Terminal 5	153470	Insulator (21-40) 10
3640	Washer, Lock 3, 5, 6, 10	151412	Insulator (1-9) 5	153484	Screw (6-32 Spl) 10
3646	Washer, Lock 10	151415	Block, Terminal 3	153492	Connector, Plug (3 Pt) 3, 9
4703	Spring 10	151416	Nut (6-40 Hex) 3, 5	153537	Screw (6-40 x 9/32 Hex) 6
5816	Washer, Insulating 3, 6, 9	151442	Screw (6-40 x 1/2 Hex) 8	153538	Gasket 6
7002	Washer, Flat 3 to 6, 8, 9, 10, 12	151511	Gasket 6	153817	Screw (4-40 x 3/8 Hex) 10
7415	Nut (1/2-32 Hex) 9	151540	Lampholder 3, 5, 6, 9	153841	Screw (6-40 x 9/16 Hex) 3, 8
8330	Washer, Flat 5	151545	Guide, Paper 4, 6, 11	153882	Mount, Vibration 9
35503	Foot, Rubber 6, 8	151549	Post 6, 9	154251	Latch 6
43954	Bell 10	151558	Nut, Speed 4, 5	154256	Screw, Thumb (4-40) 6
45815	Washer, Lock 10	151564	Bracket 10	154258	Shaft 5
49644	Screw, Shoulder (10-32) 5	151565	Bushing, Shoulder 10	154399	Plate, Identification (Bell) 5
55219	Screw (8-32 x 3/8 Fil) 10	151567	Armature W/Clapper 10	154433	Clamp 6
70314	Washer, Flat 12	151574	Grommet, Rubber 10	155083	Lens, Red Indicator Light 4, 5
70593	Screw, Thumb (6-40) 6, 8	151577	Screw, Shoulder (6-40) 10	155580**	Cover 3
72565	Washer, Lock 9	151579	Plate, Retaining 10	155750	Sleeve, Insulating (3/32 ID x 1/2" Lg) 7, 10
74479	Bushing 3	151618	Screw (6-40 x 7/16 Fil) 10	155751	Sleeve, Insulating (1/8 ID x 1" Lg) 7
78766	Screw, Wood (#7 x 5/8) 10	151626	Terminal 6	155752	Sleeve, Insulating (5/64 ID x 1/2" Lg) 7
80481	Screw (6-40 Spl) 12	151630	Screw (6-40 x 1/4 Hex) 3, 5, 6	155753	Sleeve, Insulating (1/8 ID x 1/2" Lg) 3, 5, 6, 7, 10
80854	Screw (6-40 x 1-7/8 Fil) 3, 9	151631	Screw (6-40 x 5/16 Hex) 5, 6, 8, 9, 10	155754	Sleeve, Insulating (1/16 ID x 1/2" Lg) 7
82474	Terminal 5, 6, 7, 10	151632	Screw (6-40 x 3/8 Hex) 6	155755	Sleeve, Insulating (11/64 ID x 5/8" Lg) 6, 7
84579	Washer, Flat 5	151637	Screw (4-40 x 1/4 Fil) 10	155859	Screw (4-40 Spl) 7, 10
88456	Mount, Vibration 6	151657	Screw (6-40 x 1/4 Fil) 3, 9	155860	Screw (4-40 x 3/8 Rd) 7, 10
89305	Screw (1/4-20 x 3/4 Hex) 9	151658	Screw (6-40 x 5/16 Fil) 3	155861	Washer, Lock 7, 10
90814	Resistor (1000 Ohm) 6	151685	Screw (4-40 x 5/16 Fil) 3, 5	156740	Screw (6-40 x 7/32 Hex) 10
91683	Nut (15/32-32 Hex) 3	151686	Screw (4-40 x 3/8 Fil) 6	156770	Plate, Identification (Teletype) 5
91684	Nut (15/32-32 Hex) 3	151692	Screw (6-40 x 3/16 Fil) 4, 6	156993	Nut, Speed 5
92260	Washer, Lock 10	151693	Screw (6-40 x 9/16 Fil) 10	157154	Insulator (41-80) 10
95320	Switch, Toggle (SP-ST) 3, 9	151722	Screw (6-40 x 3/16 Hex) 6	157156	Cable Assembly 10
97393	Screw, Shoulder (6-40) 4	151827	Strap, Terminal 5	157278	Cable Assembly 5
98544	Connector, Plug (8 Pt) 6	151982	Lamp, Incandescent (6V) 3, 5, 6	158286	Transformer 5, 10
99207	Spacer 8	151983	Shield 3, 5, 9	159275	Transformer Assembly 3
100848	Screw (1/4-20 x 1 Hex) 8	152313	Modification Kit 9	160339	Window, Glass 6
102180	Screw (6-40 x 1-15/16 Fil) 6	152314	Modification Kit 9	160974	Arm, Stop 5
107398	Terminal 7	152465	Connector, Receptacle (20 Pt) 7	161708	Latch, Magnetic 10
108355	Nut (1/4-20 Hex) 6, 8	152466	Connector, Receptacle (20 Pt) 7, 10	161747	Plate, Nut 10
110435	Nut (4-40 Hex) 6, 10	152923**	Cover 4	162590	Shaft 3
110743	Washer, Lock 10, 11	152924	Stud 9	163161	Connector, Plug (20 Pt) 7
111003	Connector, Receptacle (8 Pt) 10	152925	Latch 9	163635**	Cover 5
111017	Screw (6-40 x 5/16 Fil) 3, 5	152942	Cable Assembly 9	163636	Pad, Lower Side 5
111345	Bolt 4	152968	Plate 9	163637	Pad, Upper Left Side 5
111346	Spring 4	152969**	Plate Assembly, Base 9	163638	Pad, Upper Right Side 5
111347	Screw, Thumb (6-40) 4	152971	Bushing 9	163639	Pad, Rear Bottom 5
111776	Connector, Plug (4 Pt) 5	152972	Handle W/Studs 9	163640	Pad, Rear Upper 5
111777	Connector, Receptacle (4 Pt) 5	152973**	Plate 9	163641	Pad, Front 5
112626	Nut (10-32 Hex) 5, 9	152993	Screw, Shoulder (10-32) 9	163642	Pad, Lid 5
116082	Screw, Shoulder (1/4-32) 10	153020	Guide, Line 3, 5	163643	Plate, Base 6
119389	Washer, Flat 6	153021	Spring, Torsion 3, 5	163644	Bracket 6
119655	Ring, Retaining 9	153022	Bushing 3, 5		
121125	Washer, Spring 9	153023	Handle 3, 5		
121243	Clamp, Cable (3/16" ID) 5	153042	Window, Plastic 3		
121244	Clamp, Cable (1/4" ID) 5, 10	153342	Screw (6-40 x 15/16 Hex) 10		
121246	Clamp, Cable (3/8" ID) 10	153390**	Cover 3		
121248	Clamp, Cable (1/2" ID) 8				
122373	Screw, Shoulder (6-40) 3				

**Refer to Page 1 for Finish Suffix

NUMERICAL INDEX (Continued)

Part Number	Description and Page Number	Part Number	Description and Page Number	Part Number	Description and Page Number
163646	Rail, Base 6	164419	Plate, Nut 10	174438	Screw (1/4-20 Spl) 6
164331	Modification Kit to Provide Terminal Blocks and Cables for Selective Calling 10	164420**	Bracket, Left Mounting 10	193656	Bracket, Mounting 3
164332	Modification Kit to Adapt a Cover to Accommodate Superfold Form Stationery 6	164421**	Bracket, Right Mounting 10	194025	Cable Assembly 3
164333	Cable 10	164422**	Bracket, Mounting 10	194321	Modification Kit 12
164334	Bar, Paper Guide 6	173872**	Cover 5	194322	Guide, Paper 12
164345**	Modification Kit 10	173873	Pad, Lower Right Side 5	195006	Arm, Stop 3
164384	Cable Assembly 5, 10	173874	Pad, Upper Right Side 5	195598	Modification Kit 11
164396	Cable Assembly 6	173875	Pad, Upper Rear 5	195599	Modification Kit 11
164397	Cable Assembly 6	173876	Bracket, Connector 5	195601	Window 11
164398**	Plate 10	173877	Cable Assembly 5	195602	Plate, Bearing 11
164399	Cable 10	173878	Plate, Base 6	195603	Arm, Right Stripper 11
164400	Bell Assembly, Signal 10	173879	Cable Assembly 5	195604	Arm, Left Stripper 11
164401	Cable Assembly 10	173913**	Cover 5	195605	Guide, Right Form 11
164412**	Cover 10	173914	Plate, Base 8	195606	Guide, Left Form 11
		173915	Block, Mounting 8	195607	Guide, Left Form 11
		173916**	Cover 8	195608	Guide, Right Form 11
		173917	Pad, Lower Right Side 5	197746	Hinge Assembly 5
		174044**	Cover 3	304520	Cable Assembly 6

**Refer to Page 1 for Finish Suffix