

28 SEQUENCE SELECTOR BASE (LSB)

PARTS

Figure	Title	Page
1	Sequence Selector Base	2
2	Gear Sets	3
	Numerical Index	4

TELETYPE AND BELL SYSTEM CODE CROSS-REFERENCE						
Unit	Teletype Code	Bell System Code		Gear Sets	Teletype Code	Bell System
Sequence Selector Base	LSB1/000	28A		Steel & Fiber	151060	28A
					151075	28B
					151100	28C
				Nylon	161293	28A-1
161294	28B-1					
161295	28C-1					

NOTE:

When ordering parts from this section,
prefix the number with the letters TP.

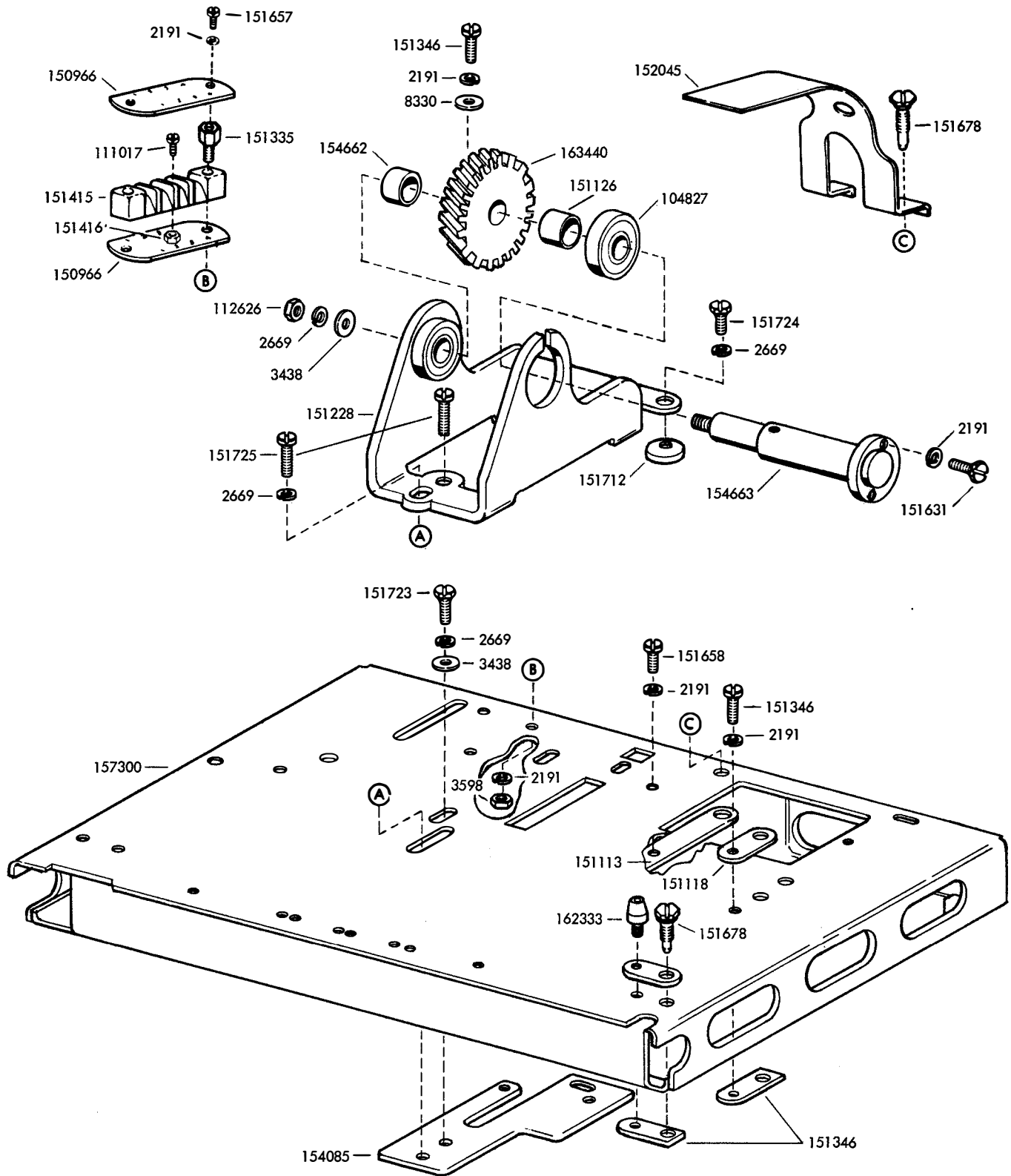
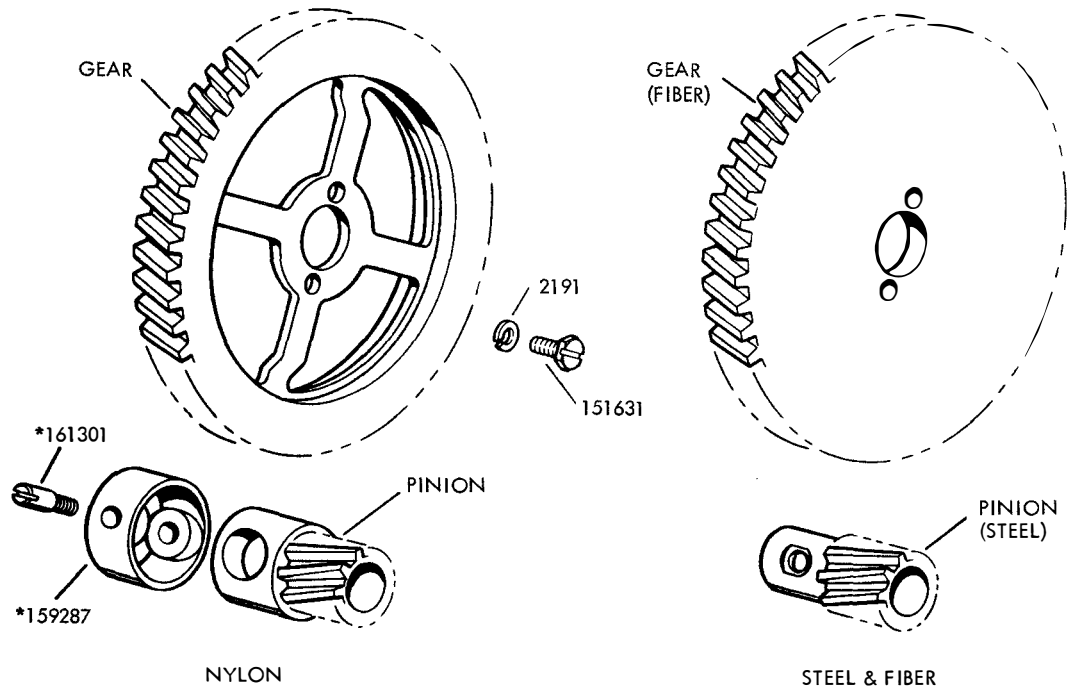


FIGURE 1. SEQUENCE SELECTOR BASE



*Supplied with gear set

GEAR CHART-FIBER & STEEL SETS				
SPEED	UNIT CODE	GEAR SET	PINION	GEAR
368OPM-60WPM (45.45 BAUD)	7.42	151060	151130 (14T)	151131 (96T)
460OPM-75WPM (56.88 BAUD)	7.42	151075	151132 (17T)	151133 (93T)
600OPM-100WPM (74.2 BAUD)	7.42	151100	151134 (20T)	151135 (84T)

GEAR CHART-NYLON SETS				
SPEED	UNIT CODE	GEAR SET	PINION	GEAR
368OPM-60WPM (45.45 BAUD)	7.42	161293	159278 (14T)	159279 (96T)
460OPM-75WPM (56.88 BAUD)	7.42	161294	159281 (17T)	159282 (93T)
600OPM-100WPM (74.2 BAUD)	7.42	161295	159284 (20T)	159285 (84T)

FIGURE 2. GEAR SETS

NUMERICAL INDEX

Part Number	Description and Page Number	Page Number	Description and Page Number	Page Number	Description and Page Number
2191	Washer, Lock 2, 3	151132	Pinion, 17T 3	152045	Guard, Gear 2
2669	Washer, Lock 2	151133	Gear, 93T 3	154085	Plate 2
3438	Washer, Flat 2	151134	Pinion, 20T 3	154662	Spacer 2
3598	Nut, 6-40 Hex 2	151135	Gear, 84T 3	154663	Shaft 2
8330	Washer, Flat 2	151228	Bracket W/Bearing 2	157300	Base 2
104827	Bearing, Ball 2	151335	Stud 2	159278	Pinion, 14T 3
111017	Screw, 6-40 x 5/16 Fil 2	151346	Screw, 6-40 x 3/8 Fil 2	159279	Gear, 96T 3
	Fil 2	151415	Block, Terminal 2	159281	Pinion, 17T 3
112626	Nut, 10-32 Hex 2	151416	Nut, 6-40 Hex 2	159282	Gear, 93T 3
150966	Insulator, 1-4 Terminal 2	151631	Screw, 6-40 x 5/16 Hex 2, 3	159284	Pinion, 20T 3
151060	Gear Set, 60 WPM 3		Screw, 6-40 x 1/4 Fil 2	159285	Gear, 84T 3
151075	Gear Set, 75 WPM 3	151657	Screw, 6-40 x 5/16 Fil 2	159287	Retainer, Pinion 3
151100	Gear Set, 100 WPM 3	151658	Screw, 1/4-32 Pilot 2	161293	Gear Set, 60 WPM 3
151113	Strip, Mounting 2	151678	Button, Pivot 2	161294	Gear Set, 75 WPM 3
151118	Plate, Spacing 2	151712	Button, Pivot 2	161295	Gear Set, 100 WPM 3
151126	Spacer, .250" Thk 2	151723	Screw, 10-32 x 3/8 Hex 2	161301	Post 3
151130	Pinoin, 14T 3	151724	Screw, 10-32 x 5/8 Hex 2	162333	Stud, Locating 2
151131	Gear, 96T 3	151725	Screw, 10-32 x 3/4 Fil 2	163440	Gear, 48T 2