

28 MULTIPLE WIRE DISTRIBUTOR (LD)
PARTS

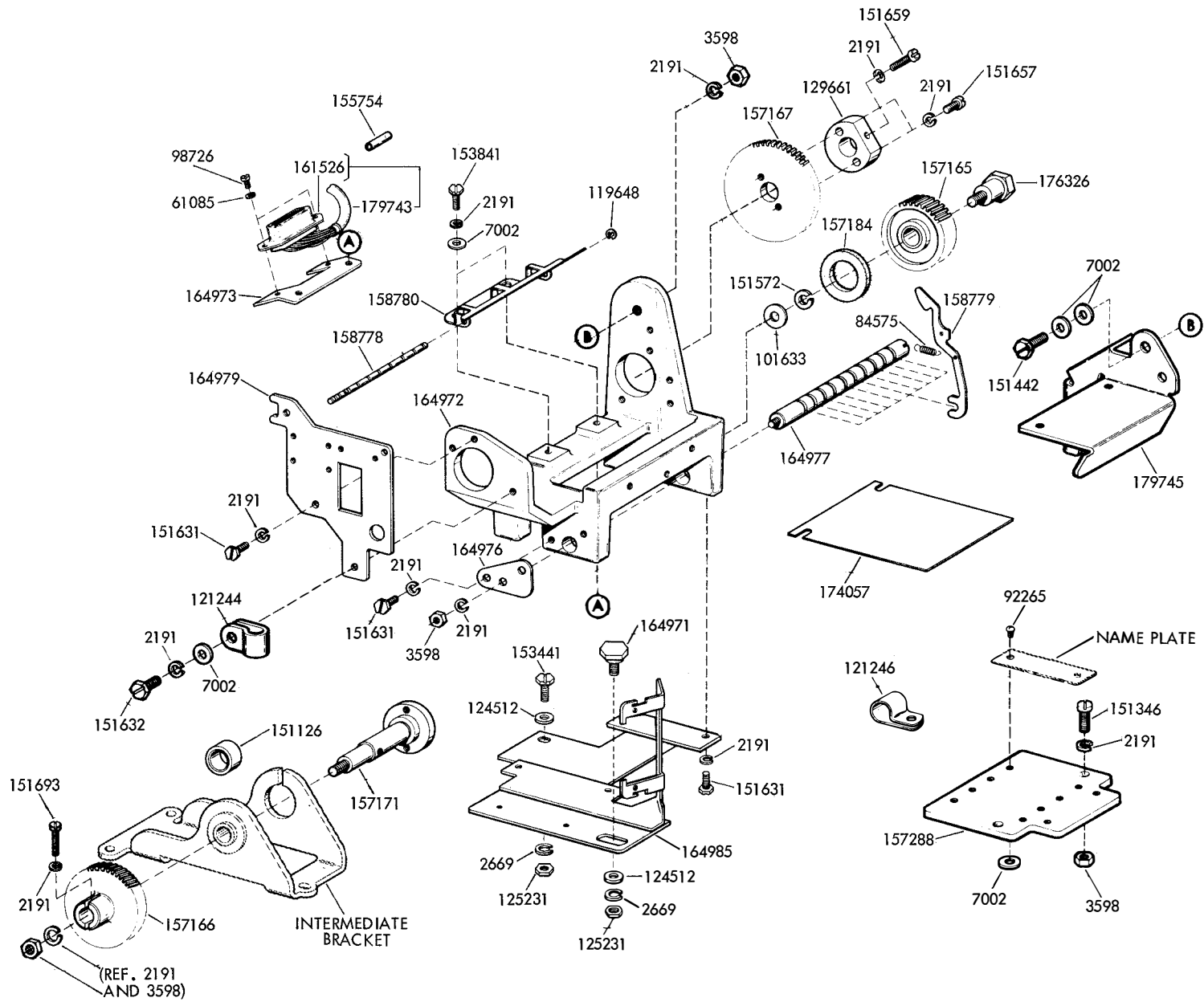
FIGURE	CONTENTS	PAGE
1	Frame Mechanism (For RO & KSR Sets)	2
2	Frame Mechanism (For ASR Set)	3
3	Frame Mechanism (Self-Contained & ASR)	4
4	Frame Mechanism (Rack Mounted)	5
5	Function Clutch Mechanism	6
6	Clutch Trip Mechanism	7
7	Distributor Block	8
8	159394 and 173358 Modification Kits to Add Terminal Board Assembly to Apparatus Cabinet	9
	Numerical Index	10

Application	Teletype Code	Bell System Code
ASR	LD8	28J-1
KSR & RO	LD9	28J
Self-Contained	LD10	28J-2
Self-Contained	LD15	28K
KSR & RO	LD16	28L
Self-Contained	LD19	28L-1
Self-Contained	LD802	35A

NOTE:

When ordering parts from this section,
prefix each number with the letters TP.

FIGURE 1. FRAME MECHANISM (FOR RO & KSR SETS)



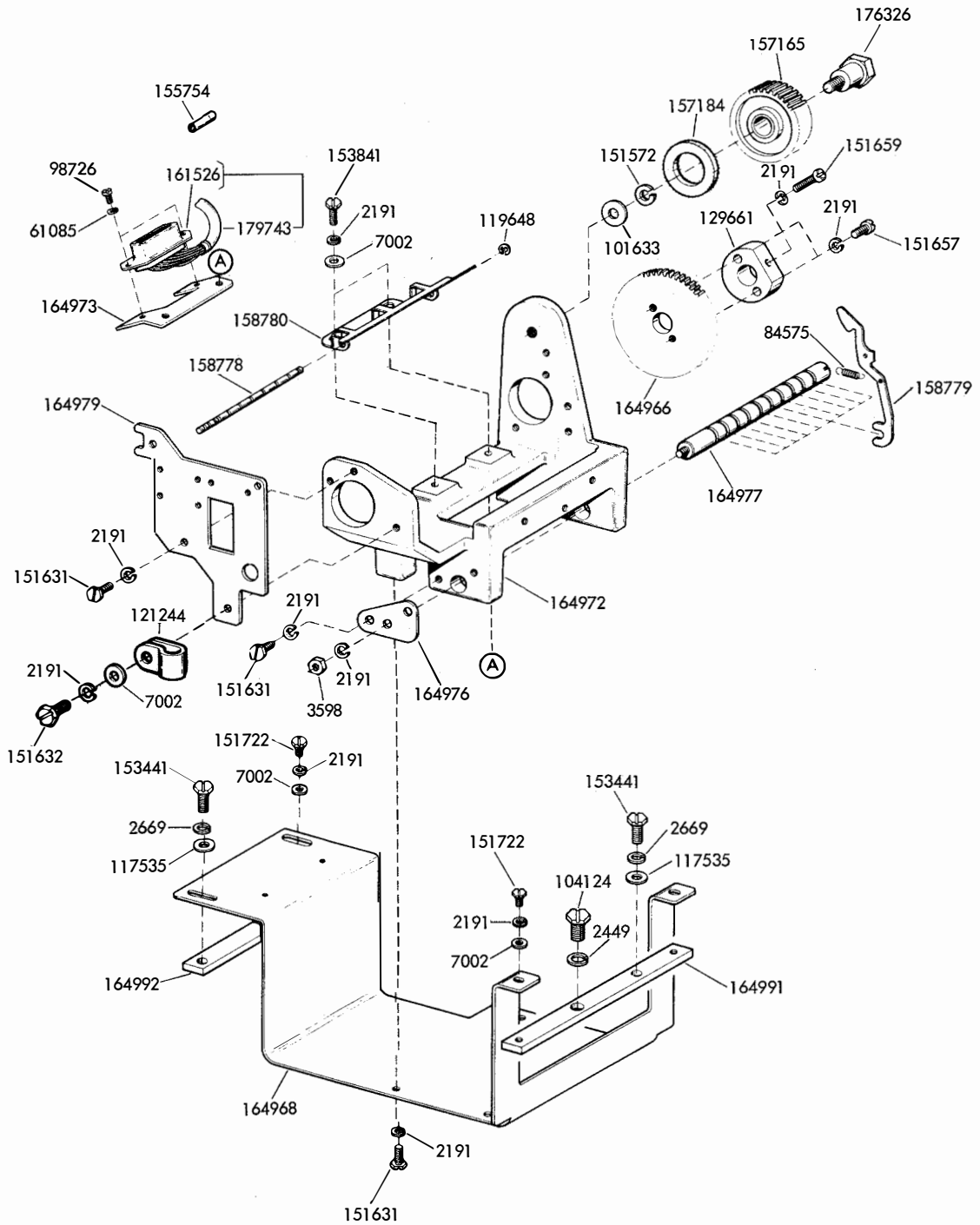


FIGURE 2. FRAME MECHANISM (FOR ASR SET)

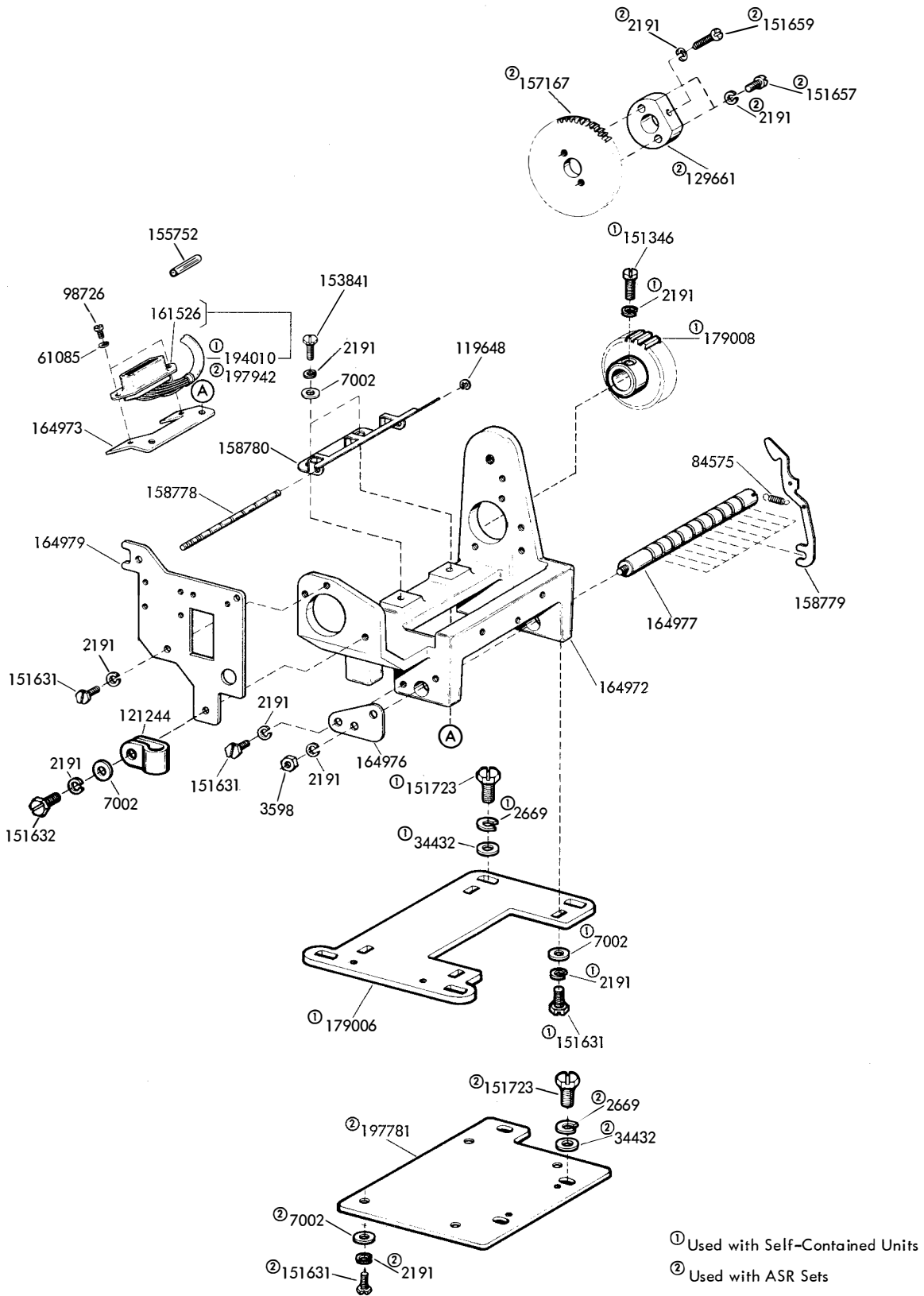


FIGURE 3. FRAME MECHANISM (SELF-CONTAINED & ASR)

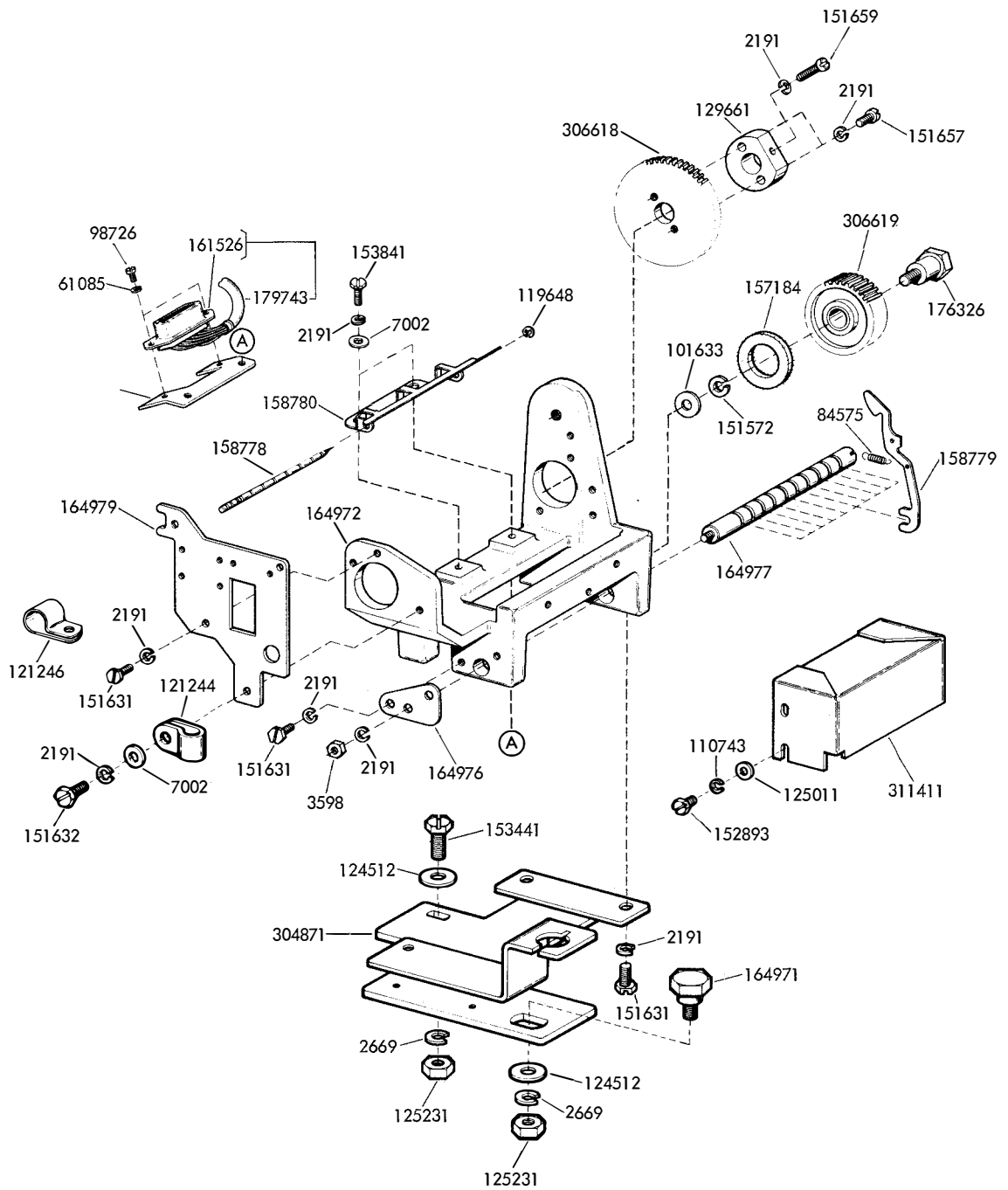


FIGURE 4. FRAME MECHANISM (RACK MOUNTED)

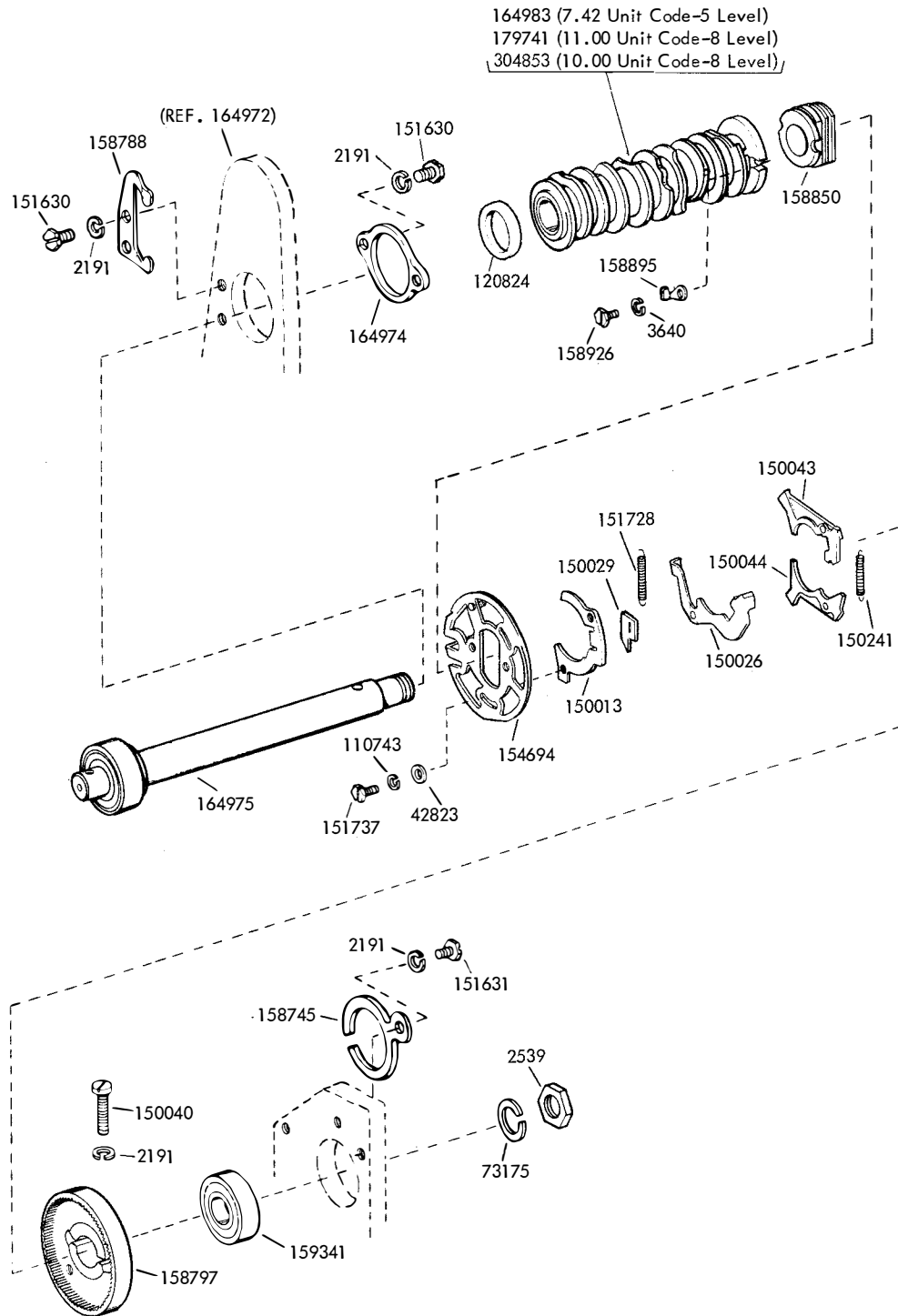


FIGURE 5. FUNCTION CLUTCH MECHANISM

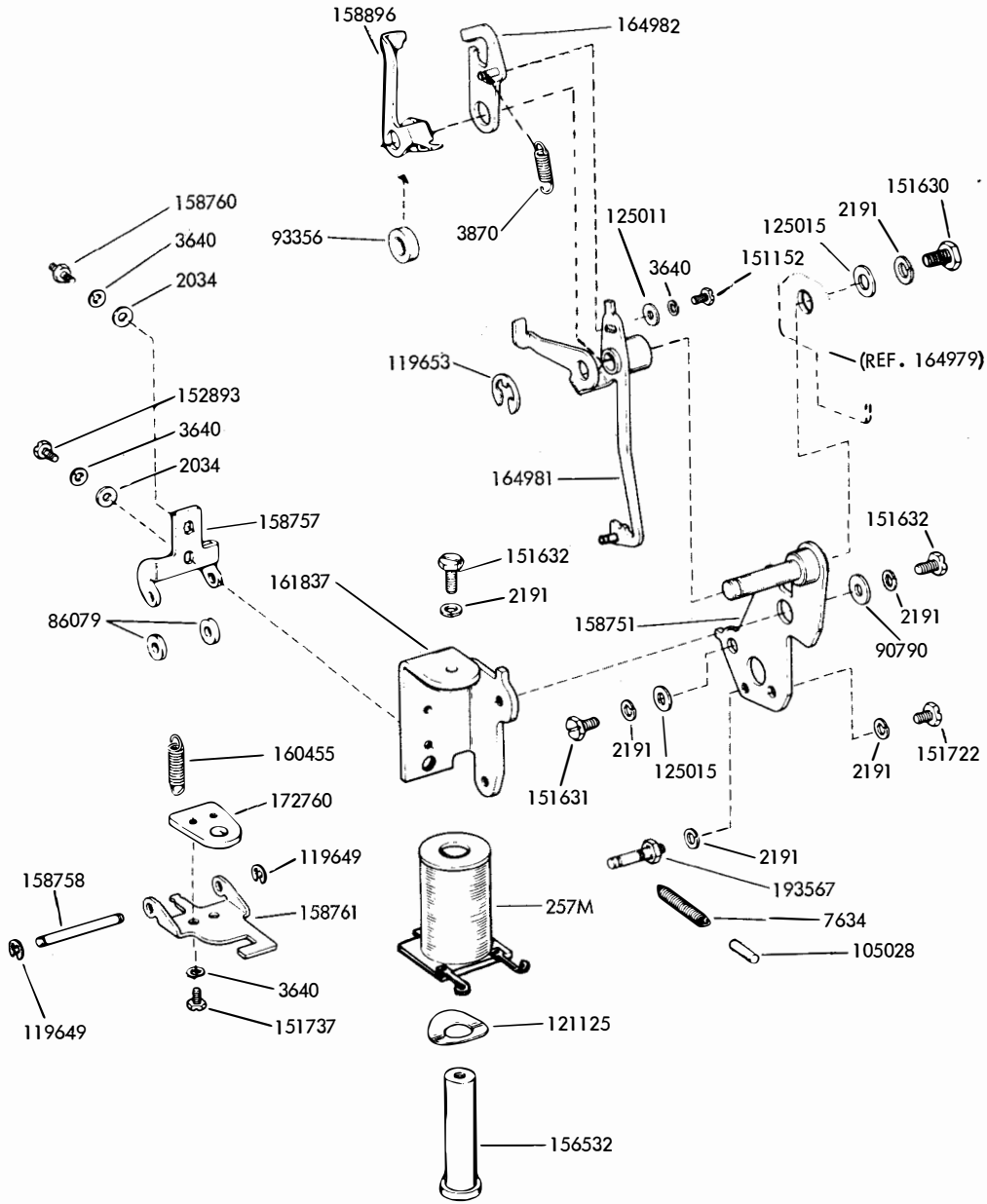
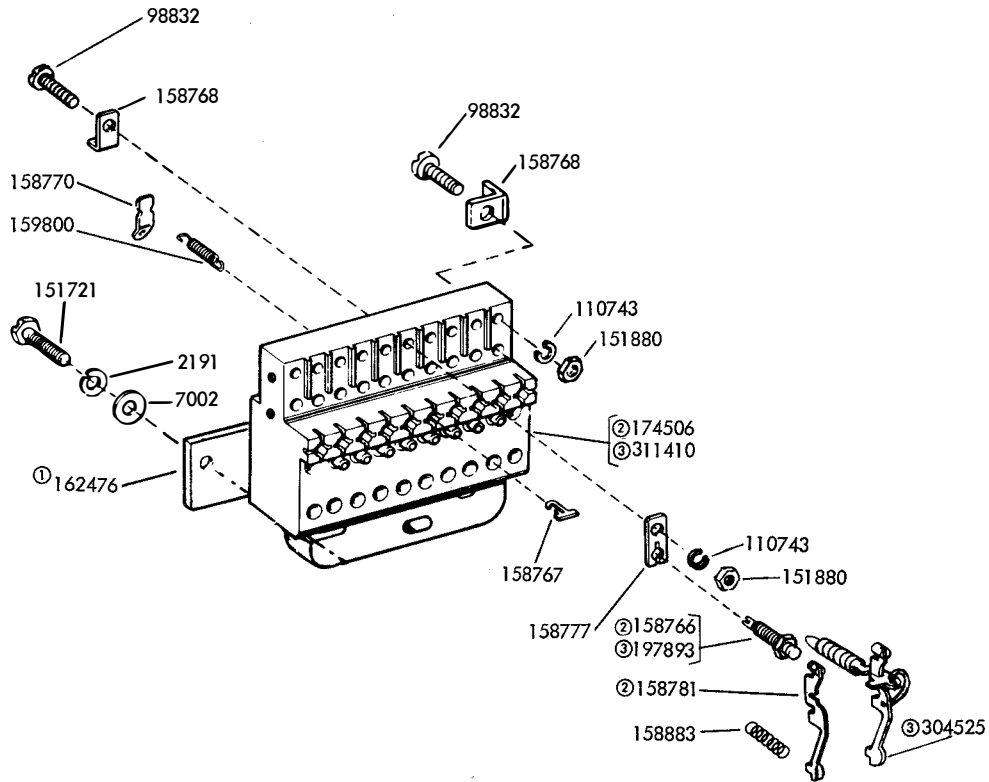


FIGURE 6. CLUTCH TRIP MECHANISM



- ① Supplied with 174506
- ② Used with 174506 Block
- ③ Used with 305136 Block

FIGURE 7. DISTRIBUTOR BLOCK

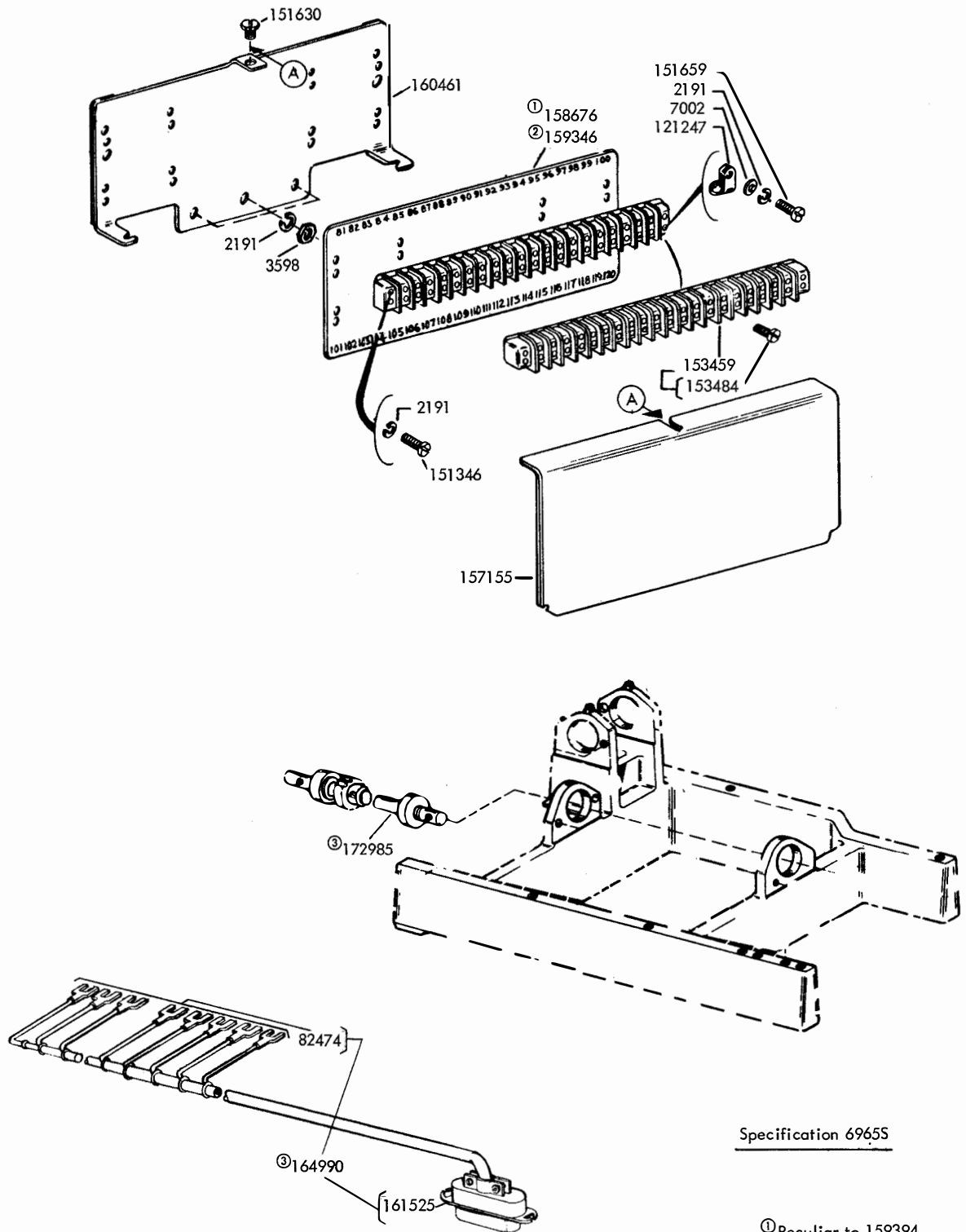


FIGURE 8. 159394 AND 173358 MODIFICATION KITS TO ADD TERMINAL BOARD ASSEMBLY TO APPARATUS CABINET

- Specification 69655
- ① Peculiar to 159394
 - ② Peculiar to 173358
 - ③ Not Part of 159394 or 173358

NUMERICAL INDEX

Part Number	Description and Page Number	Part Number	Description and Page Number	Part Number	Description and Page Number
257M	Coil, Magnet 7	151630	Screw (6-40 x 1/4 Hex) 6, 7, 9	158896	Lever, Latch 7
2034	Washer, Flat 7	151631	Screw (6-40 x 5/16 Hex) 2, 3, 4, 5, 6, 7	158926	Screw (4-40 x 7/32 Hex) 6
2191	Washer, Lock 2, 3, 4, 5, 6, 7, 8, 9	151632	Screw (6-40 x 3/8 Hex) 2, 3, 4, 5, 7	159341	Bearing, Ball 6
2449	Washer, Lock 3	151657	Screw (6-40 x 1/4 Fil) 2, 3, 5	159346	Insulator (81-120) 9
2539	Nut (3/8-32 Hex) 6	151659	Screw (6-40 x 1/2 Fil) 2, 3, 4, 5, 9	159394	Modification Kit 9
2669	Washer, Lock 2, 3, 4, 5	151693	Screw (6-40 x 9/16 Fil) 2	159800	Spring 8
3598	Nut (6-40 Hex) 2, 3, 4, 5, 9	151722	Screw (6-40 x 3/16 Hex) 3, 4, 6, 7, 8	160455	Spring 7
3640	Washer, Lock 6, 7	151737	Screw (4-40 x 11/64 Hex) 6, 7	160461	Bracket 9
3870	Spring 7	151880	Nut (4-40 Hex) 8	161525	Connector, Plug (14 Pt) 9
7002	Washer, Flat 2, 3, 4, 5, 8, 9	152893	Screw (4-40 x 1/4 Hex) 5, 7	161526	Connector, Receptacle (14 Pt) 2, 3, 4, 5
34432	Washer, Flat 4	153441	Screw (10-32 x 7/16 Hex) 2, 3, 5	161837	Bracket 7
42823	Washer, Flat 6	153459	Block, Terminal 9	162476	Plate 8
61085	Washer, Lock 2, 3, 4, 5	153484	Screw (6-32 Spl) 9	164966	Gear (42T) 3
73175	Washer, Lock 6	153841	Screw (6-40 x 9/16 Hex) 2, 4, 5	164968	Bracket, Mounting 3
82474	Terminal 9	154694	Disk, Clutch Cam 6	164971	Screw, Shoulder (10-32) 2, 5
84575	Spring 2, 3, 4, 5	155752	Sleeve, Insulating (5/64 ID x 1/2" Lg) 4	164972	Casting 2, 3, 4, 5
86079	Washer, Felt 7	155754	Sleeve, Insulating (1/16 ID x 1/2" Lg) 2, 3	164973	Bracket, Connector 2, 3, 4
90790	Washer, Flat 7	156532	Core 7	164974	Plate 6
92265	Screw (2-56 x 1/8 Rd) 2	157155	Cover 9	164975	Shaft w/Bearing 6
93356	Washer, Felt 7	157165	Gear (35T) 2, 3	164976	Plate 2, 3, 4, 5
98726	Screw (3-48 x 1/4 Fil) 2, 3, 4, 5	157166	Gear (42T) 2	164977	Shaft, Lever 2, 3, 4, 5
98832	Screw (4-40 x 11/16 Fil) 8	157167	Gear (60T) 2, 4	164979	Plate, Mounting 2, 3, 4, 5, 7
101633	Washer, Flat 2, 3, 5	157171	Shaft, Intermediate 2	164981	Lever, Trip 7
104124	Screw (1/4-32 x 11/32 Hex) 3	157184	Washer, Felt 2, 3, 5	164982	Lever, Trip 7
110743	Washer, Lock 5, 6, 8	157288	Plate, Adapter 2	164985	Plate, Mounting 2
117535	Washer, Flat 3	158745	Clamp, Bearing 6	164990	Cable Assembly 9
119648	Ring, Retaining 2, 3, 4, 5	158751	Plate, Clutch Trip 7	164991	Plate, Right Adapter 3
119649	Ring, Retaining 7	158757	Hinge, Mounting 7	164992	Plate, Left Adapter 3
119653	Ring, Retaining 7	158758	Shaft 7	172760	Armature 7
120824	Washer, Felt 6	158760	Post, Spring 7	172985	Shaft w/Bearings & Gear 9
121125	Washer, Spring 7	158761	Bail, Armature 7	173358	Modification Kit 9
121244	Clamp, Cable (1/4" ID) 2, 3, 4, 5	158766	Screw, Contact (6-40) 8	174057	Insulator, Contact 2
121246	Clamp, Cable (3/8" ID) 2, 5	158767	Guide, Lever 8, 9	174506	Block, Distributor 8
121247	Clamp, Cable (7/16" ID) 9	158768	Terminal 8	176326	Screw, Shoulder (10-32) 2, 3, 5
124512	Washer, Flat 2, 5	158770	Terminal, Spring Holder 8	179006	Plate, Mounting 4
125011	Washer, Flat 5, 7	158777	Holder, Screw 8	179008	Gear (40T) 4
125015	Washer, Flat 7	158778	Post, Spring 2, 3, 5	179743	Cable Assembly 2, 3, 5
125231	Nut (10-32 Hex) 2, 5	158779	Lever, Cam Follower 2, 3, 4, 5	179745	Bracket, Terminal Block 2
129661	Hub 2, 3, 4, 5	158780	Guide 2, 3, 4, 5	193567	Post, Spring 7
150013	Disk, Adjusting 6	158781	Rocker, Contact 8	194010	Cable Assembly 4
150026	Lever, Shoe Release 6	158788	Clamp, Bearing 6	197781	Plate, Mounting 4
150029	Wick, Felt 6	158797	Drum, Clutch 6	197893	Screw, Contact (6-40) 8
150040	Screw (6-40 x 5/8 Fil) 6	158850	Bearing, Sleeve 6	197942	Cable Assembly 4
150043	Shoe, Secondary Clutch 6	158883	Spring, Compression 8	304525	Rocker 8
150044	Shoe, Primary Clutch 6	158895	Clip 6	304871	Plate, Mounting 5
150241	Spring 6			305136	Block, Distributor 8
151126	Spacer (.250") 2			306618	Gear (60T) 5
151152	Screw (4-40 x 3/16 Hex) 7			306619	Gear (32T) 5
151346	Screw (6-40 x 3/8 Fil) 2, 4, 9			311410	Block, Distributor 8
151442	Screw (6-40 x 1/2 Hex) 2			311411	Cover 5
151572	Washer, Lock 2, 3, 5				