

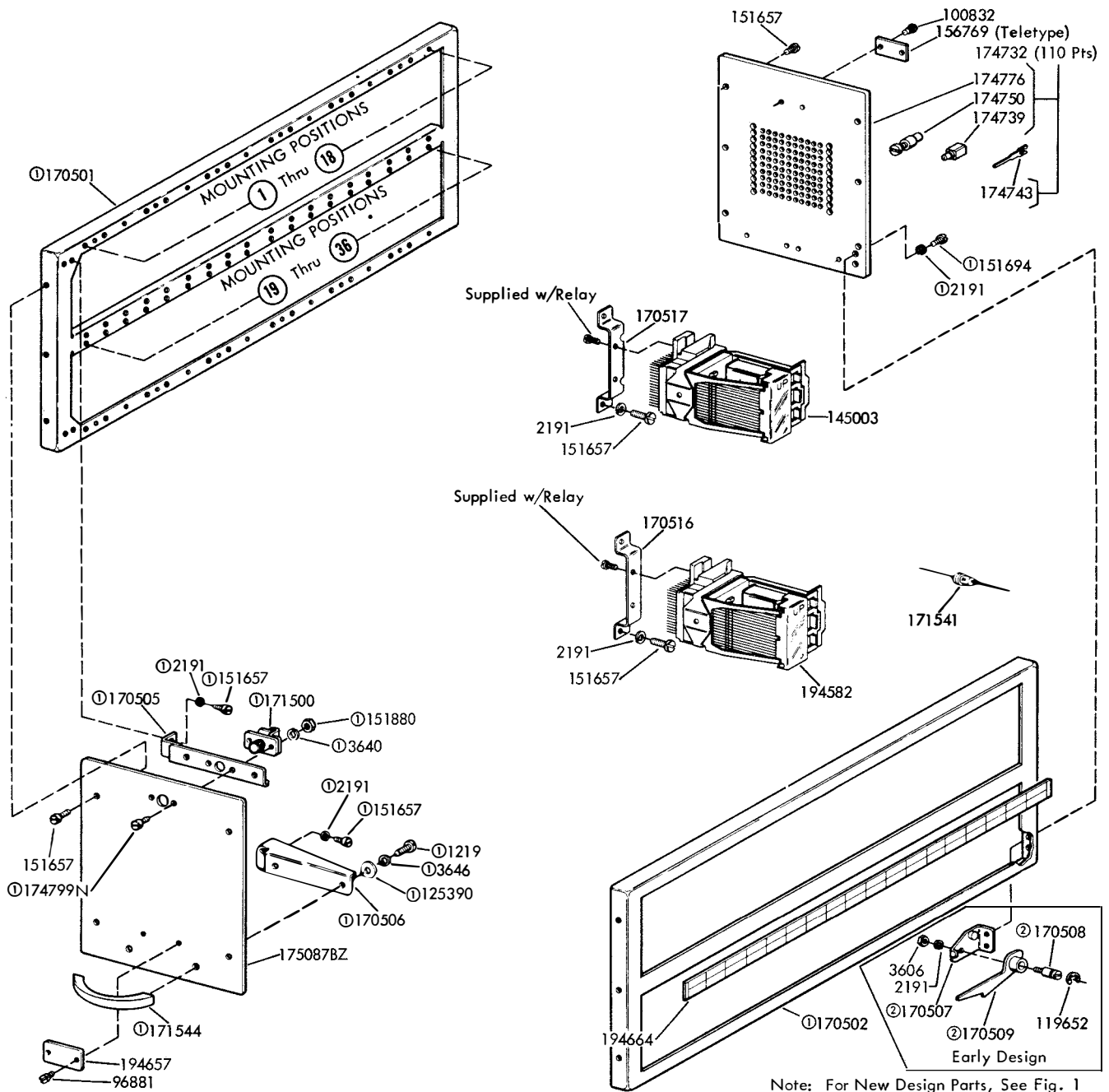
STATION CONVERTER MODULES
PARTS

FIGURE	CONTENTS	PAGE
1	194650BZ Storage Relay Module	2
2	194651BZ Transfer Tree Module	3
3	194652BZ Diode Matrix Module	4
4	194653BZ Control Circuit Module	5
5	194670BZ Transfer Tree Module	6
6	194671BZ Diode Matrix Module	7
7	194672BZ Control Circuit Module	8
8	170573 Rectifier Assembly	9
	Numerical Index	10

Note:

When ordering parts from this section
prefix each number with the letters TP.

Part of Bell System 35A and 35B
Converter-Translator

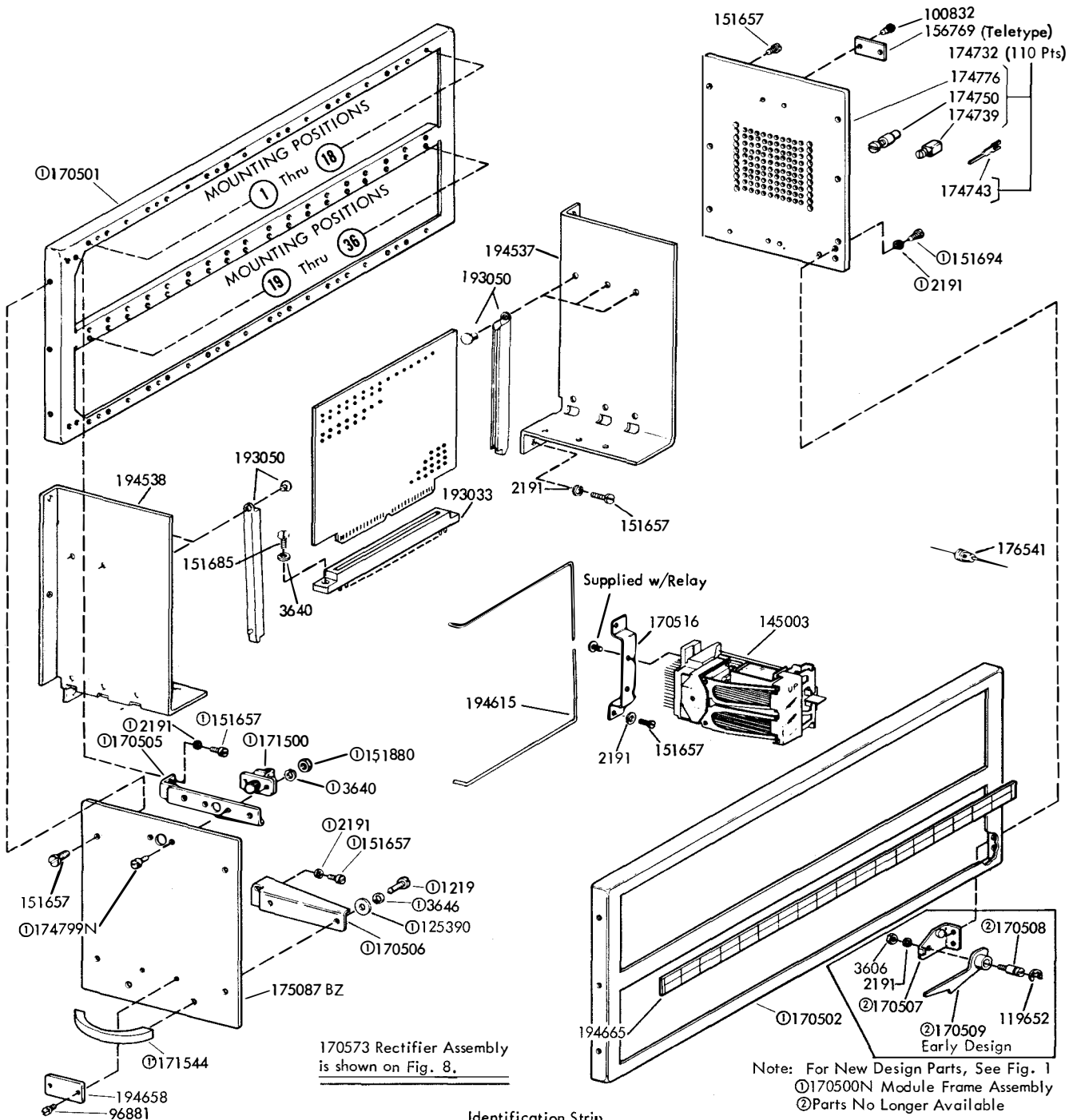


Note: For New Design Parts, See Fig. 1
 ①170500N Module Frame Assembly
 ②Parts No Longer Available

Identification Strip

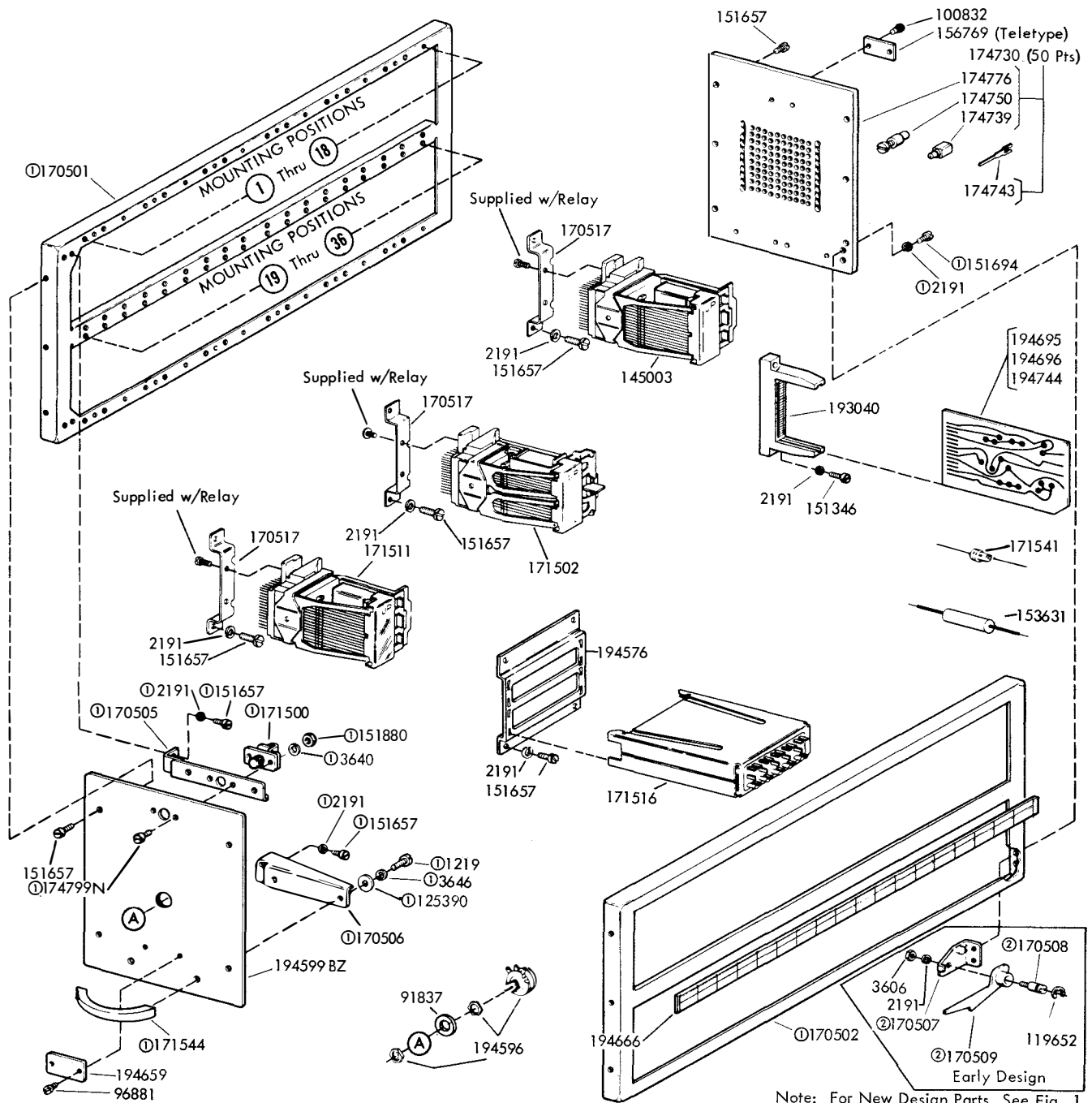
1	2	3	4	5	6	7	8	9	10	11	12	13	14	15	16	17	18
194582 K109		194582 K110		194582 K111		194582 K112		194582 K113		194582 K114		194582 K115		194582 K116			174732 J110
19	20	21	22	23	24	25	26	27	28	29	30	31	32	33	34	35	36
194582 K117		194582 K118		194582 K119		194582 K120		194582 K121		194582 K122		194582 K123		145003 K144			

FIGURE 2. 194651BZ TRANSFER TREE MODULE



Identification Strip																	
1	2	3	4	5	6	7	8	9	10	11	12	13	14	15	16	17	18
			194514 Z104	194515 Z105	194516 Z106	194565 Z107	194635 Z108					145003 K143			170573 171651 Z111 J124		174732 J111
19	20	21	22	23	24	25	26	27	28	29	30	31	32	33	34	35	36
			193033 J112	193033 J113	193003 J114	193003 J115	193003 J116								171651 P102		

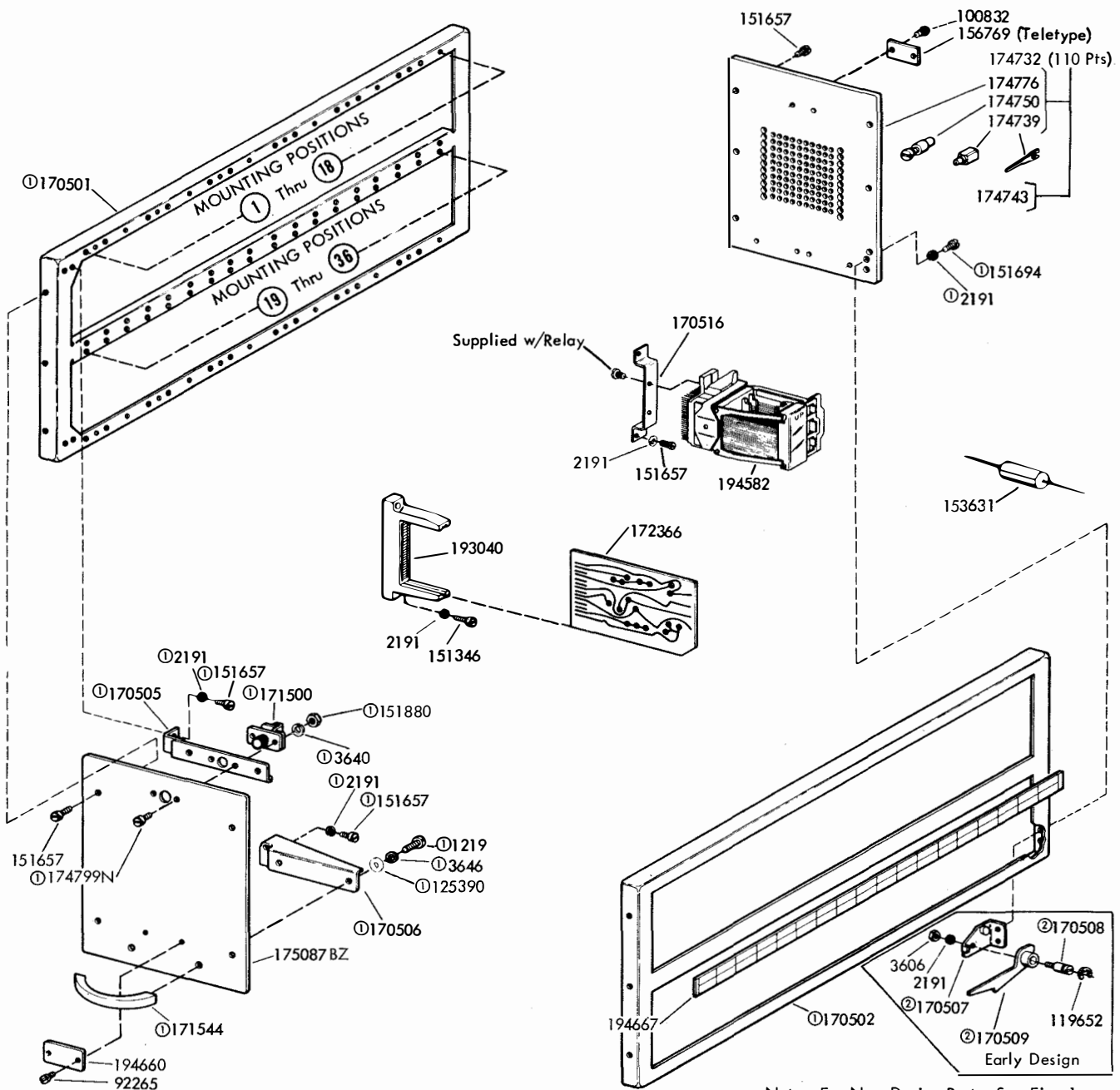
FIGURE 3. 194652BZ DIODE MATRIX MODULE



Identification Strip

1	2	3	4	5	6	7	8	9	10	11	12	13	14	15	16	17	18
145003 K125		145003 K126		145003 K127		171511 K128		171511 K129		171511 K131		171511 K132		194696 193040 Z108 J119	194695 193040 Z109 J117	194744 193040 Z110 J118	174730 J120
19	20	21	22	23	24	25	26	27	28	29	30	31	32	33	34	35	36
		171516 K138 K139			171511 K133		171511 K134		171502 K135		171511 K136		171511 K137		145003 K142		

FIGURE 4. 194653BZ CONTROL CIRCUIT MODULE



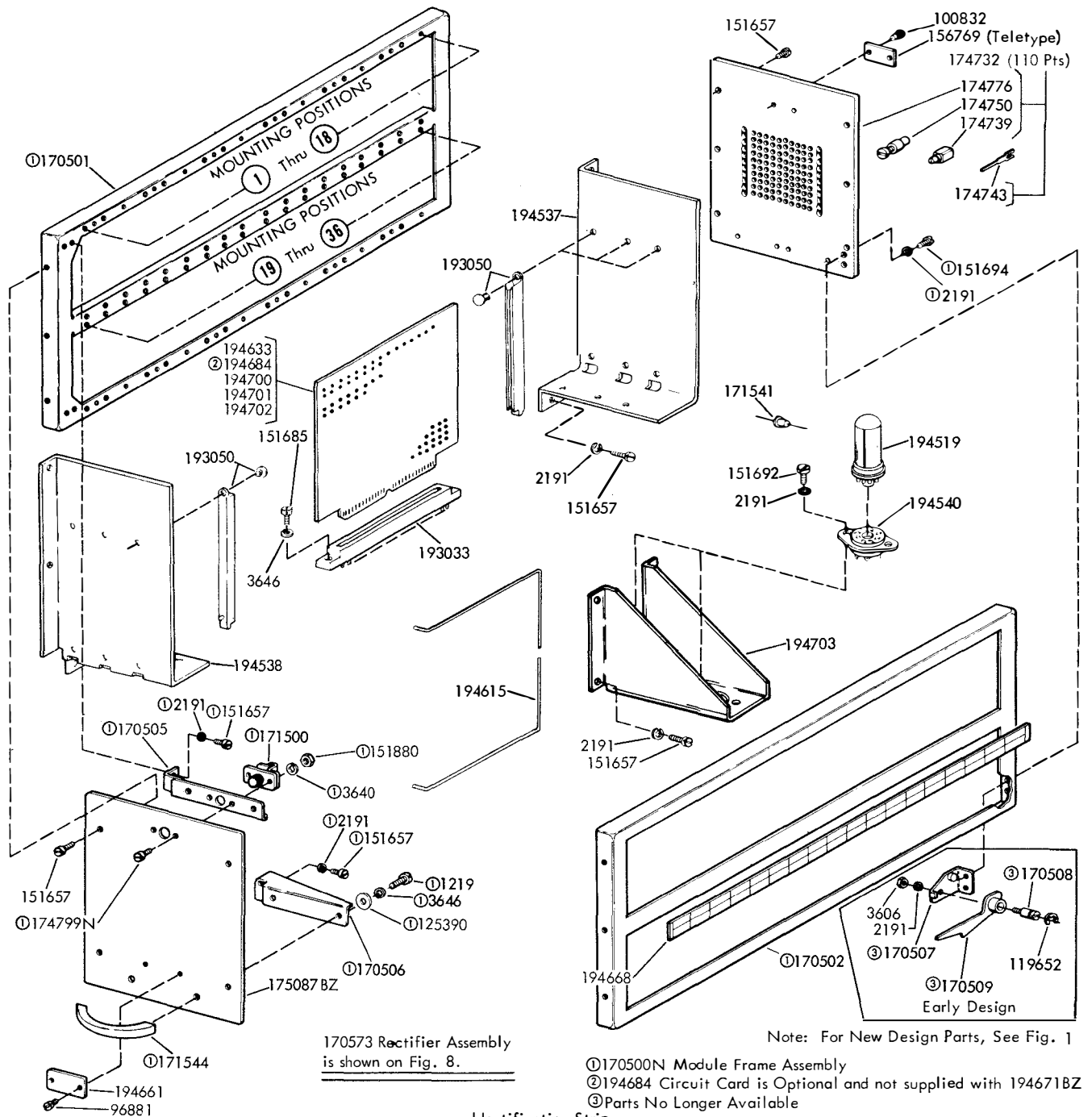
Note: For New Design Parts, See Fig. 1

①170500N Module Frame Assembly
 ②Parts No Longer Available

Identification Strip

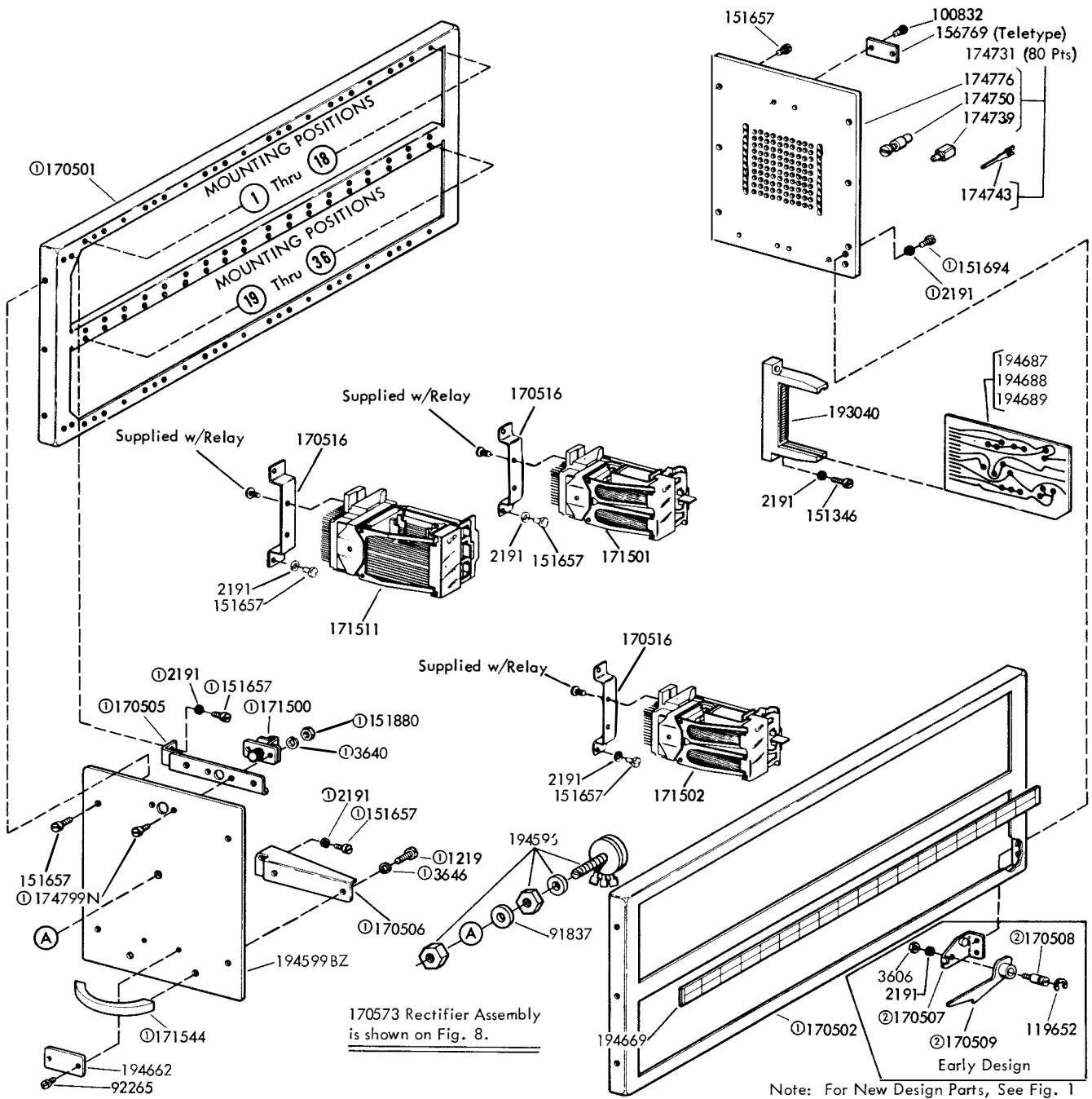
1	2	3	4	5	6	7	8	9	10	11	12	13	14	15	16	17	18
194582 K101		194582 K102		194582 K103		194582 K104		194582 K105		194582 K106			194685 193040 Z101 J101				174732 J112
19	20	21	22	23	24	25	26	27	28	29	30	31	32	33	34	35	36
194582 K109		194582 K110		194582 K111		194582 K108		194582 K112			171502 K107		194685 193040 Z102 J102				

FIGURE 5. 194670BZ TRANSFER TREE MODULE



1	2	3	4	5	6	7	8	9	10	11	12	13	14	15	16	17	18
			193033 Z103	193033 Z104	193033 Z105	193033 Z106	193033 Z107				194540 K113 K114				170573 171651 Z112 P102		174732 J115
19	20	21	22	23	24	25	26	27	28	29	30	31	32	33	34	35	36
			193033 J103	193033 J104	193033 J105	193033 J106	193033 J107				194540 J113 J114						

FIGURE 6. 194671BZ DIODE MATRIX MODULE



Identification Strip

1	2	3	4	5	6	7	8	9	10	11	12	13	14	15	16	17	18
171511		194687	194688	194689											170573		174731
K115		193040	193040	193040											171651		J111
		Z108	Z109	Z110											Z111		
		J103	J109	J110											P101		
19	20	21	22	23	24	25	26	27	28	29	30	31	32	33	34	35	36
171501		171502															
K116		K117															

FIGURE 7. 194672BZ CONTROL CIRCUIT MODULE

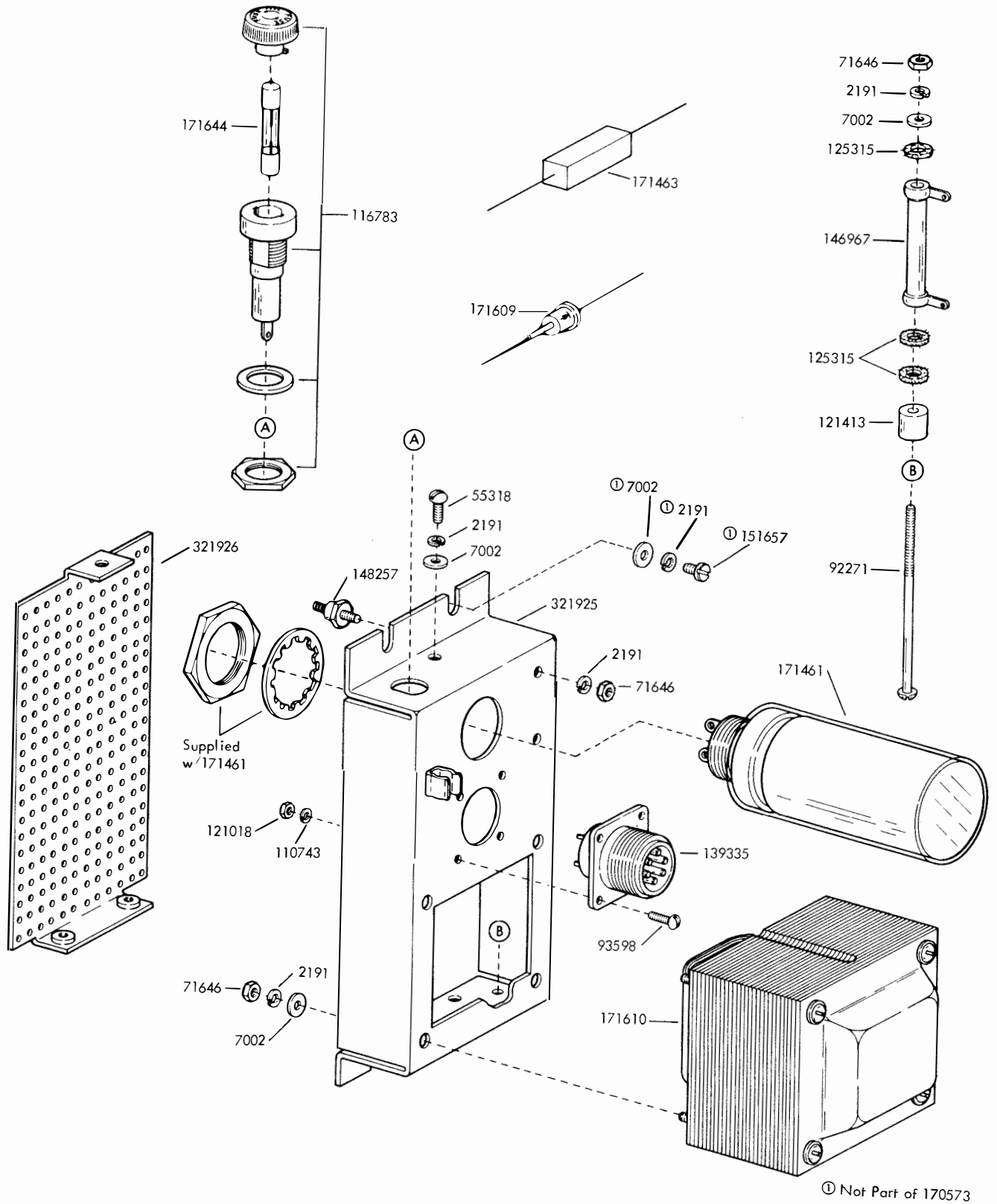


FIGURE 8. 170573 RECTIFIER ASSEMBLY

NUMERICAL INDEX

Part Number	Description and Page Number	Part Number	Description and Page Number	Part Number	Description and Page Number
1219	Screw, 8-32 x 5/16 Fil 3 to 8	170516	Bracket 3, 4, 6, 8	194565	Card, Circuit 4
2191	Washer, Lock 2 to 9	170517	Bracket 3, 5	194576	Bracket, Mounting 5
3598	Nut, 6-40 Hex 2	170573	Rectifier Assembly 1, 2, 4, 7 to 9	194582	Relay 3, 6
3606	Nut, 6-40 Hex 2 to 8	171461	Capacitor, 900 MFD 9	194596	Potentiometer, 7,5000 Ohm 5, 8
3640	Washer, Lock 2 to 8	171463	Resistor, 1 Ohm 9	194599BZ	Plate, Front 5, 8
3646	Washer, Lock 2 to 8	171500	Fastener, Adjustable Pawl 2 to 8	194615	Retainer, Circuit Card 4, 7
7002	Washer, Flat 9	171501	Relay 8	194633	Card, Circuit 7
55318	Screw, 6-32 x 1/4 Rd 9	171502	Relay 5, 6, 8	194635	Card, Circuit 4
71646	Nut, 6-32 Hex 9	171511	Relay 5, 8	194650BZ	Module Assembly 1, 2
91837	Washer, Insulating 5, 8	171516	Relay 5	194651BZ	Module Assembly 1, 3
92265	Screw, 2-56 x 1/8 Rd 6, 8	171541	Diode 3, 5, 7	194652BZ	Module Assembly 1, 4
92271	Screw, 6-32 x 2-3/4 Rd 9	171544	Handle, 2-3/4" Lg 2 to 8	194653BZ	Module Assembly 1, 5
93598	Screw, 4-40 x 5/16 Rd 9	171609	Diode 9	194656	Plate, Identification 2
96881	Screw, 2-56 x 5/64 Fil 2 to 5, 7	171610	Transformer 9	194657	Plate, Identification 3
100832	Screw, #0 x 3/16 Drive 2 to 8	171644	Fuse, 1.5 Amp 9	194658	Plate, Identification 4
110743	Washer, Lock 9	171651	Connector, 6 Pt Receptacle 2, 4, 7, 8	194659	Plate, Identification 5
116783	Holder, Fuse 9	172366	Card, EC366 Circuit 6	194660	Plate, Identification 6
119652	Ring, Retaining 2 to 8	174730	Plate Assembly, 50 Pt 2, 5	194661	Plate, Identification 7
121018	Nut, 4-40 Hex 9	174731	Plate Assembly, 80 Pt 8	194662	Plate, Identification 8
121413	Spacer, .343" Thk 9	174732	Plate Assembly, 110 Pt 3, 4, 6, 7	194663	Strip, Identification 2
125315	Washer, Insulating 9	174739	Insulator, White 2 to 8	194664	Strip, Identification 3
125390	Washer, Flat 2 to 7	174743	Terminal, Plug Type 2 to 8	194665	Strip, Identification 4
139335	Connector, 6 Pt Plug 9	174750	Key Assembly, Locating 2 to 8	194666	Strip, Identification 5
145003	Relay 3, 4, 5	174776	Plate, Connector 2 to 8	194667	Strip, Identification 6
146967	Resistor, 750 Ohm 9	174799N	Screw, 4-40 x 11/32 Fil 2 to 8	194668	Strip, Identification 7
148257	Terminal, Insulated 9	175087BZ	Plate, Front 2, 3, 4, 6, 7	194669	Strip, Identification 8
151346	Screw, 6-40 x 3/8 Fil 2, 5, 6, 8	176541	Cpacitor, 3 MFD 4	194670BZ	Module Assembly 1, 6
151657	Screw, 6-40 x 1/4 Fil 2 to 9	177410	Spring, Latch 2	194671BZ	Module Assembly 1, 7
151685	Screw, 4-40 x 5/16 Fil 4, 7	193003	Module 4	194672BZ	Module Assembly 1, 8
151692	Screw, 6-40 x 3/16 Fil 7	193033	Connector, 56 Pt Card 4, 7	194684	Card, Circuit 7
151694	Screw, 6-40 x 11/32 Fil 2 to 8	193040	Connector w/Guide Slot 2, 5, 6, 8	194685	Card, EC685 Circuit 6
151880	Nut, 4-40 Hex 2 to 8	193050	Guide, Card 4, 7	194687	Card, EC687 Circuit 8
153631	Network, Spark Suppression 2,5,6	194514	Card, Circuit 4	194688	Card, EC688 Circuit 8
156769	Plate, Teletype Identification 2 to 8	194515	Card, Circuit 4	194689	Card, EC689 Circuit 8
170500N	Frame Assembly 2 to 8	194516	Card, Circuit 4	194695	Card, EC605 Circuit 5
170501	Frame, Left 2 to 8	194518	Bracket 2	194696	Card, EC696 Circuit 5
170502	Frame, Right 2 to 8	194519	Relay, Mercury 2, 7	194700	Card, Circuit 7
170505	Gusset, Upper 2 to 8	194537	Bracket, Right 4, 7	194701	Card, Circuit 7
170506	Gusset, Lower 2 to 8	194538	Bracket, Left 4, 7	194702	Card, Circuit 7
170507	Bracket, Latch 2 to 8	194540	Socket, 8 Pt 2, 7	194703	Bracket, Relay Mounting 7
170508	Post, Supporting 2 to 8			194743	Card, Circuit 2
170509	Latch w/Hub 2 to 8			194744	Card, Circuit 5
				321925	Cover, Rectifier 9
				321926	Cover 9