

STATION CONVERTER CABINETS (AC)

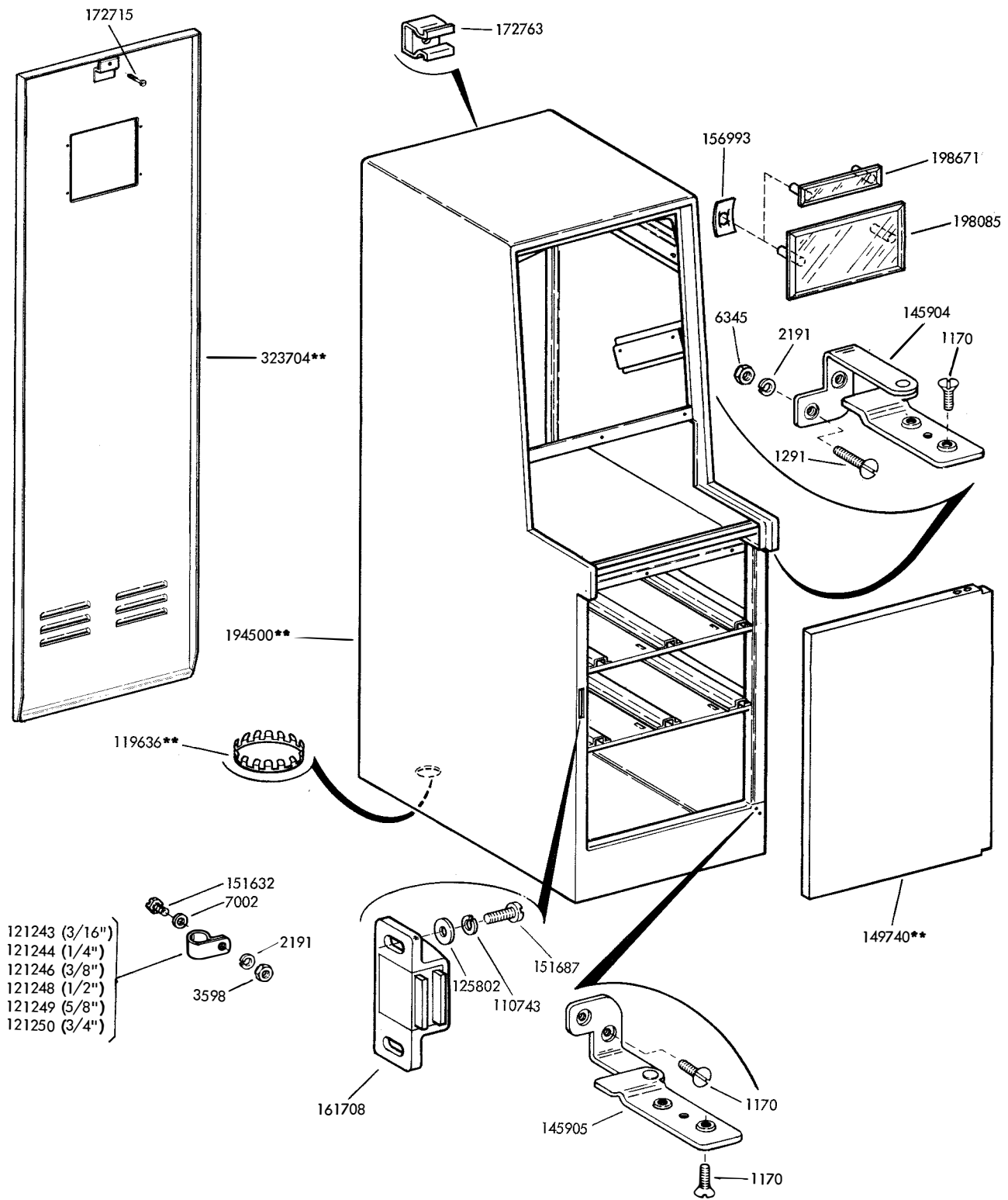
PARTS

FIGURE	CONTENTS	PAGE
1	Converter Cabinets	2
2	Converter Cabinets (Continued)	3
3	Sliding Front Pane for Cabinets without Transmitter Units	4
4	Sliding Front Panel for Cabinets with Transmitter Units	5
5	Tape Guide and Chad Depressor Mechanism	6
6	Tape Handling Mechanism	7
7	Chad Container	8
8	Transmitter Drive Shaft Mechanism	8
9	Reader Mounting Components	9
10	Reader Mounting Components (Early Design)	10
11	Electrical Service Unit	11
12	Electrical Service Unit (Early Design)	12
13	193400 Selector Magnet Driver Assembly	13
14	323705 Modification Kit to provide Ventilation of Cabinets	14
15	Cable Components	15
	Numerical Index	16

MULTI-COLOR CODE CHART		
Multi-Color Suffix and Basic Color	One-Color Suffix and Color	Finish
MA - Beige	HC - Light Beige HG - Fawn	Smooth Vinyl Smooth Vinyl
MB - Gray	HB(68) - Light Gray HE - Covert Gray	Smooth Vinyl Smooth Vinyl
MC - Green	HB(68) - Light Gray HD - Moss Green	Smooth Vinyl Smooth Vinyl
The double asterisk (**) denotes a painted part. Suffix to be applied following the part number. Number in parentheses indicates Bell System Code.		

Note:  
When ordering parts from this Section  
prefix each number with the letters TP.

Part of Bell System 35A and 35B  
Converter-Translator



- 121243 (3/16")
- 121244 (1/4")
- 121246 (3/8")
- 121248 (1/2")
- 121249 (5/8")
- 121250 (3/4")

\*\*Refer to page 1 for finish suffix

FIGURE 1. CONVERTER CABINET

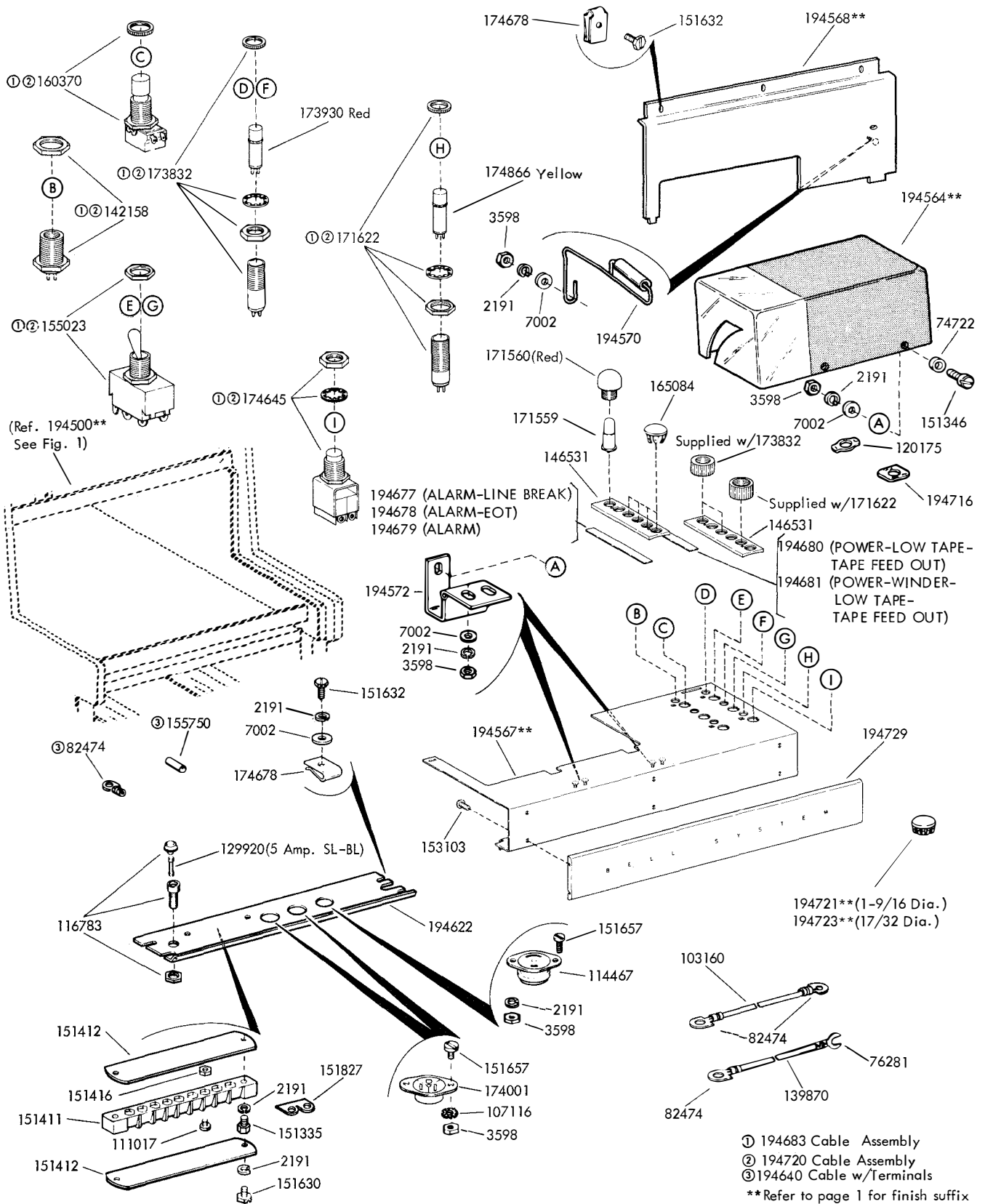


FIGURE 2. CONVERTER CABINET (CONTINUED)

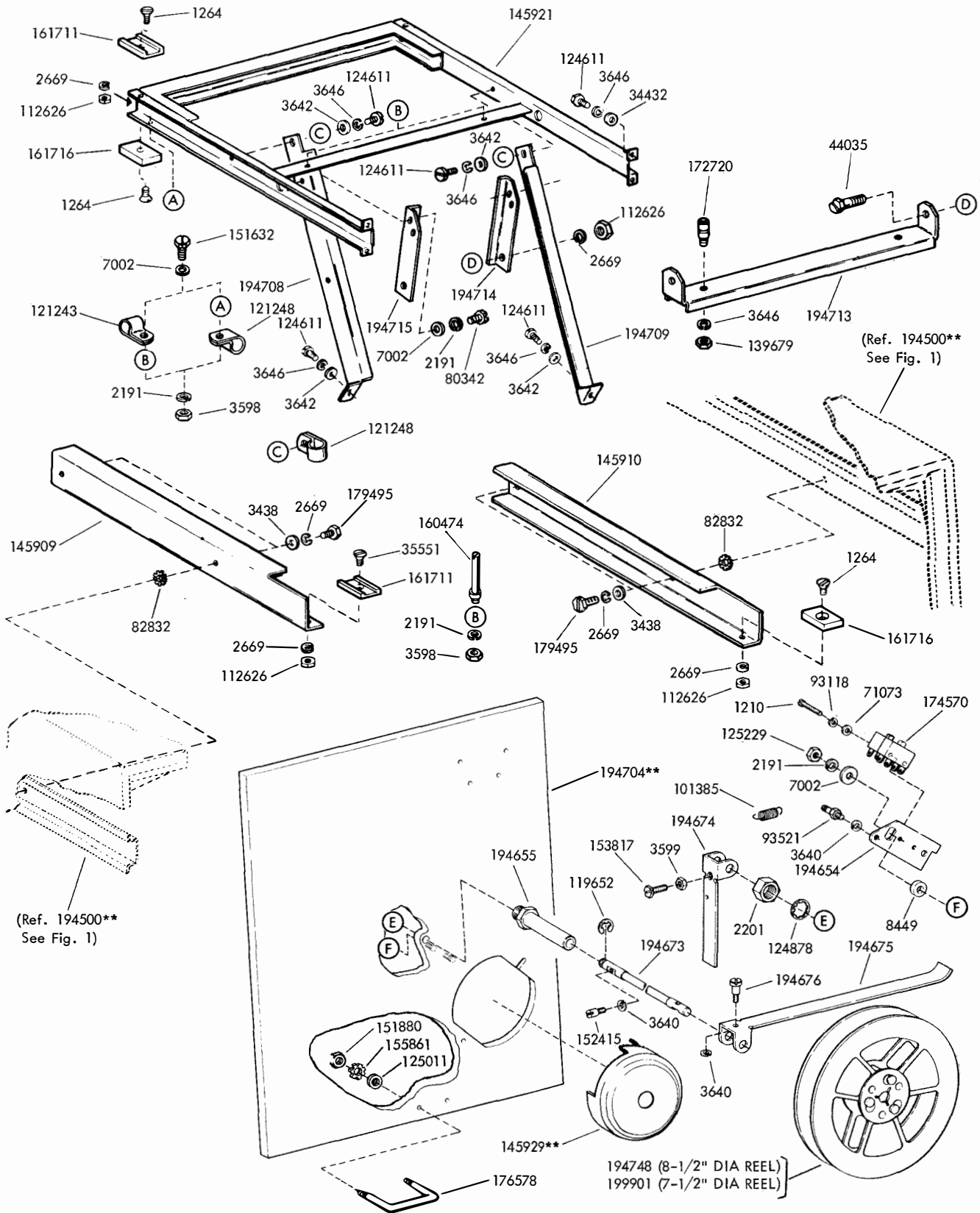


FIGURE 3. SLIDING FRONT PANEL FOR CABINET WITHOUT TRANSMITTER UNITS

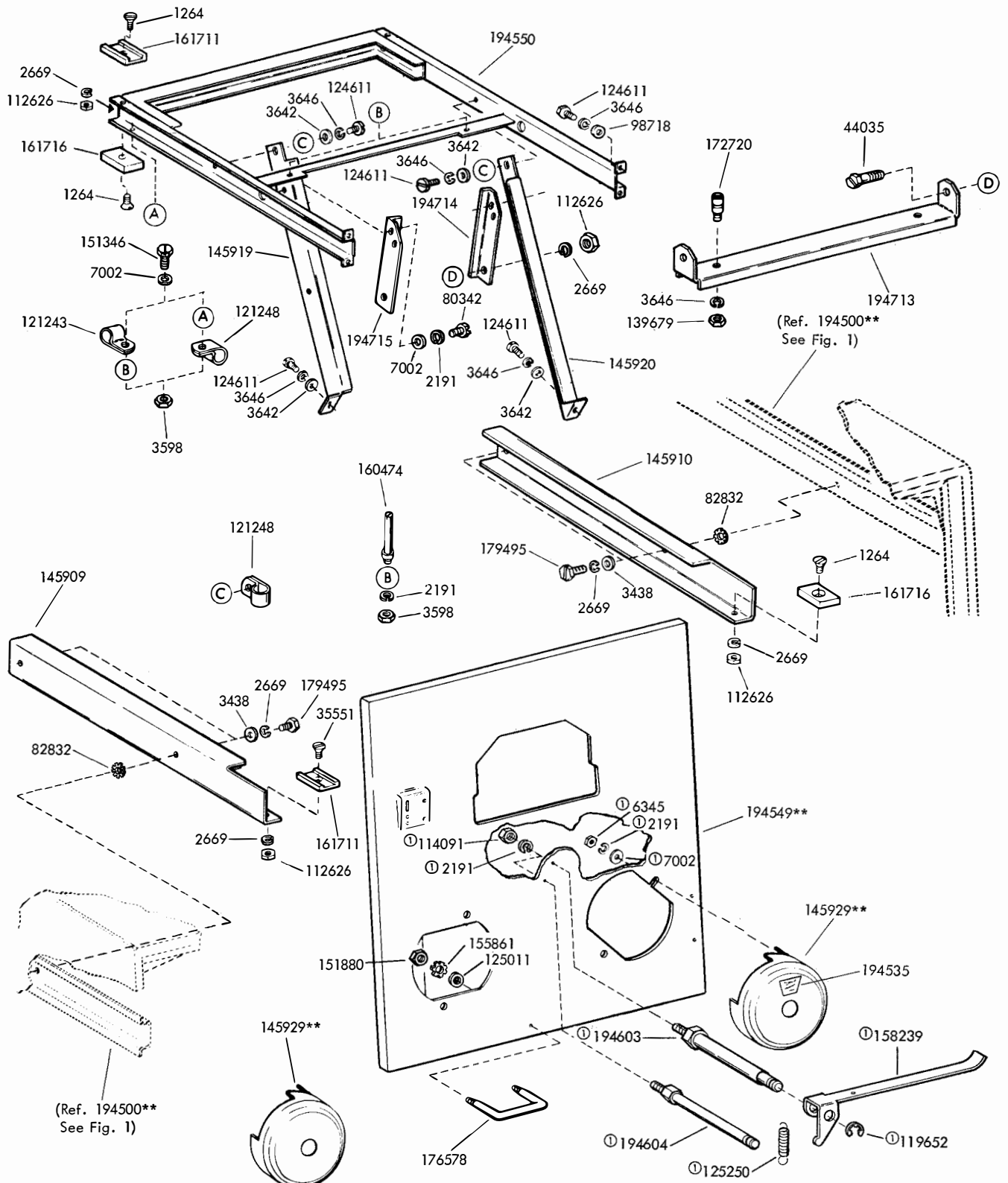
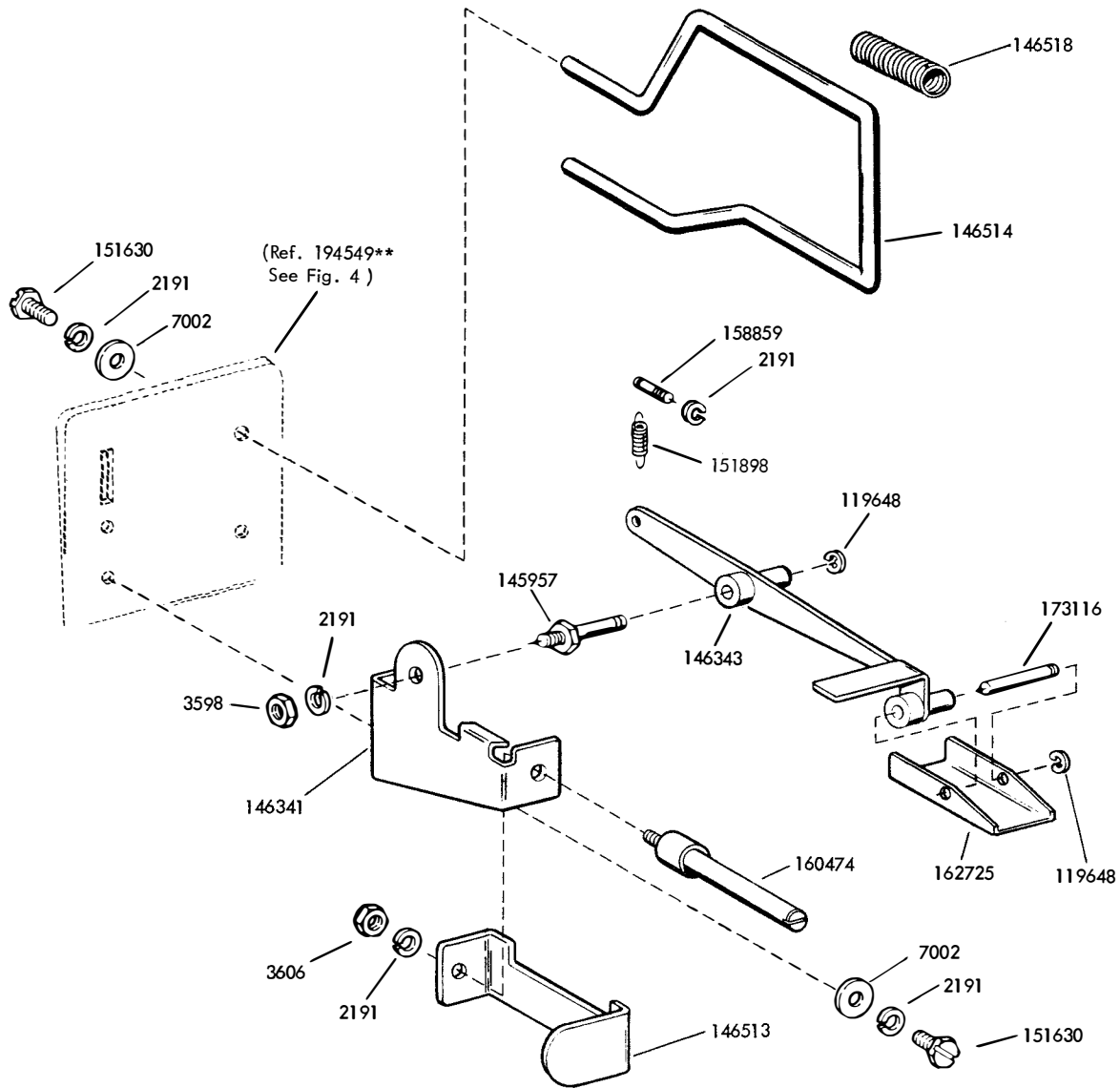


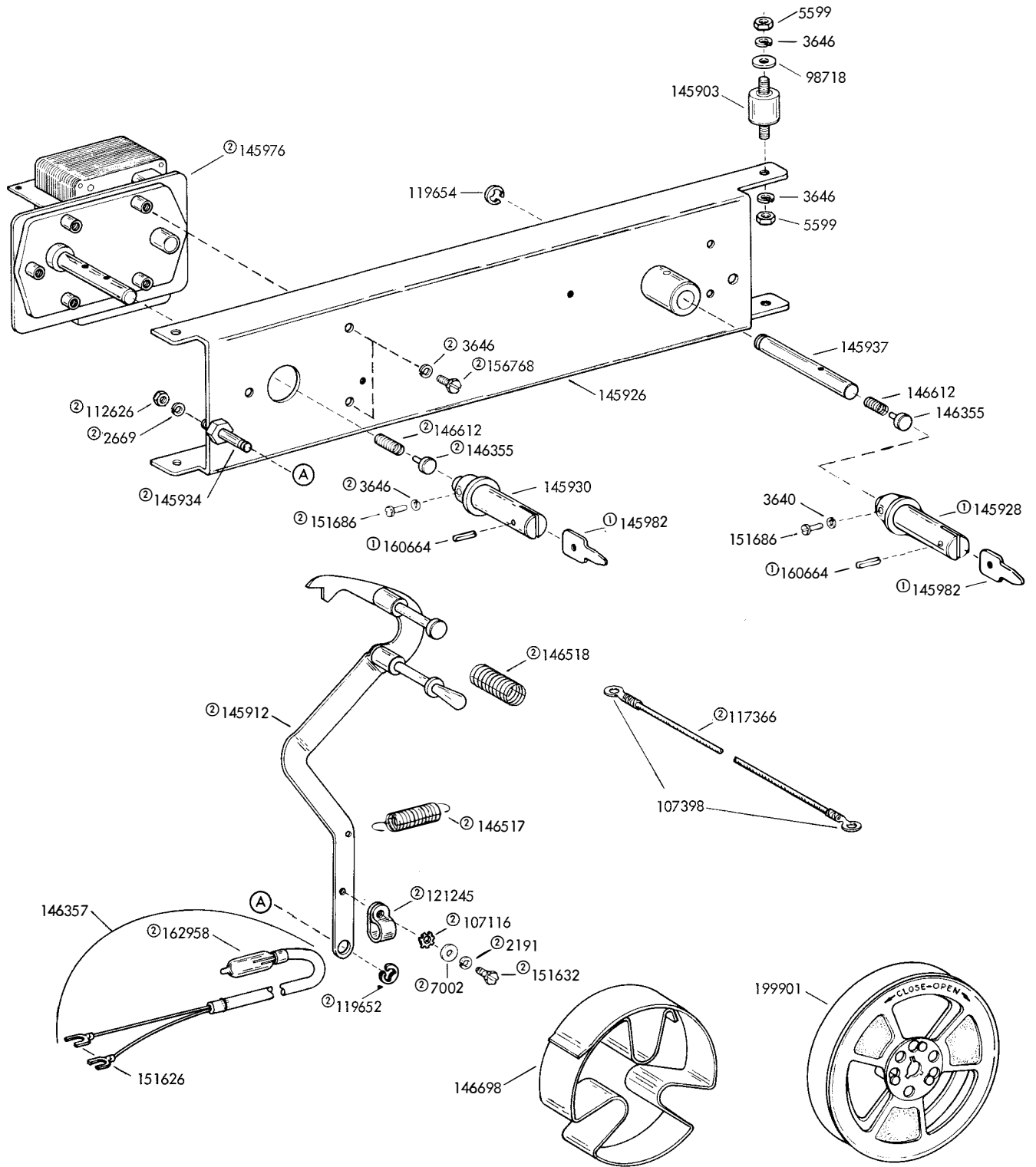
FIGURE 4. SLIDING FRONT PANEL FOR CABINETS WITH TRANSMITTER UNITS

① Early Design, For New Design See Figure 2  
 \*\*Refer to page 1 for finish suffix



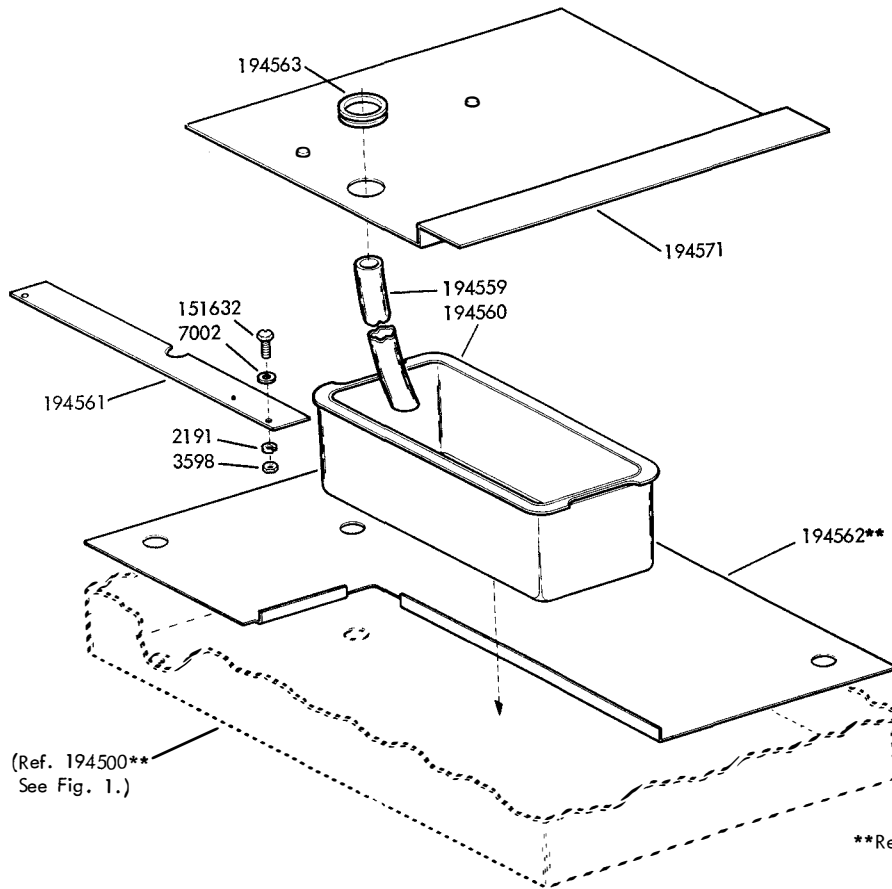
\*\*Refer to page 1 for finish suffix

FIGURE 5. TAPE GUIDE AND CHAD DEPRESSOR MECHANISM



- ① Part of 145930 Hub Assembly
- ② Peculiar to Cabinets equipped w/Tape Winding Reel

FIGURE 6. TAPE HANDLING MECHANISM



\*\*Refer to page 1 for finish suffix

FIGURE 7. CHAD CONTAINER

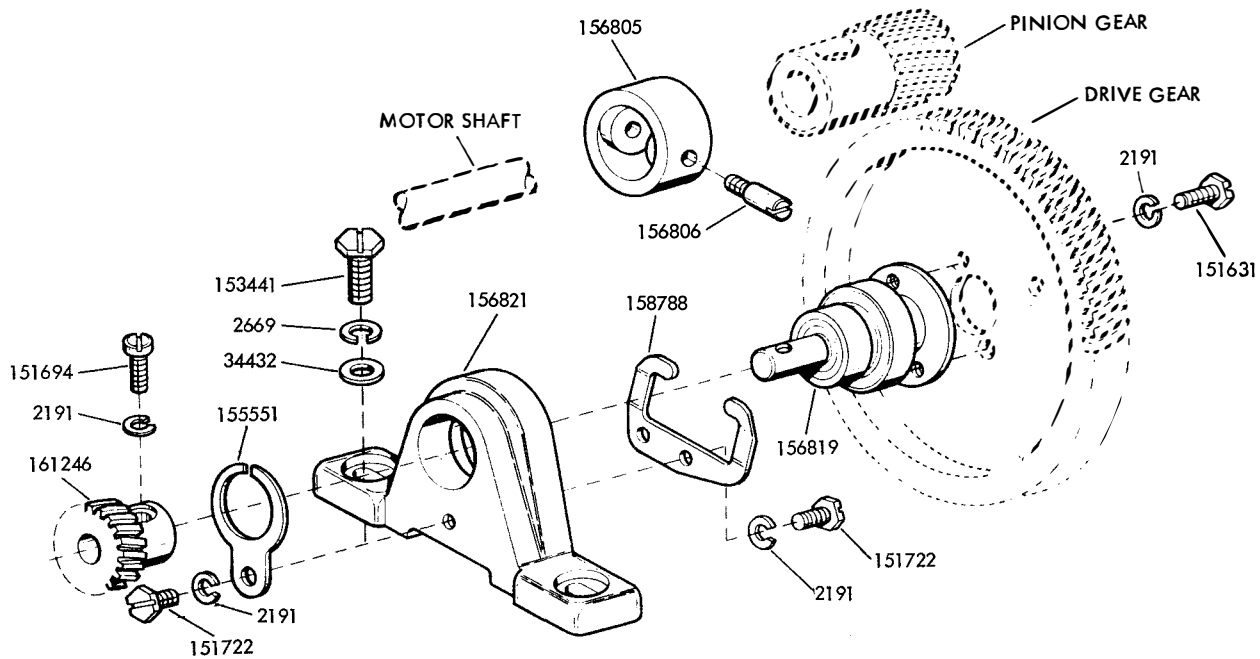
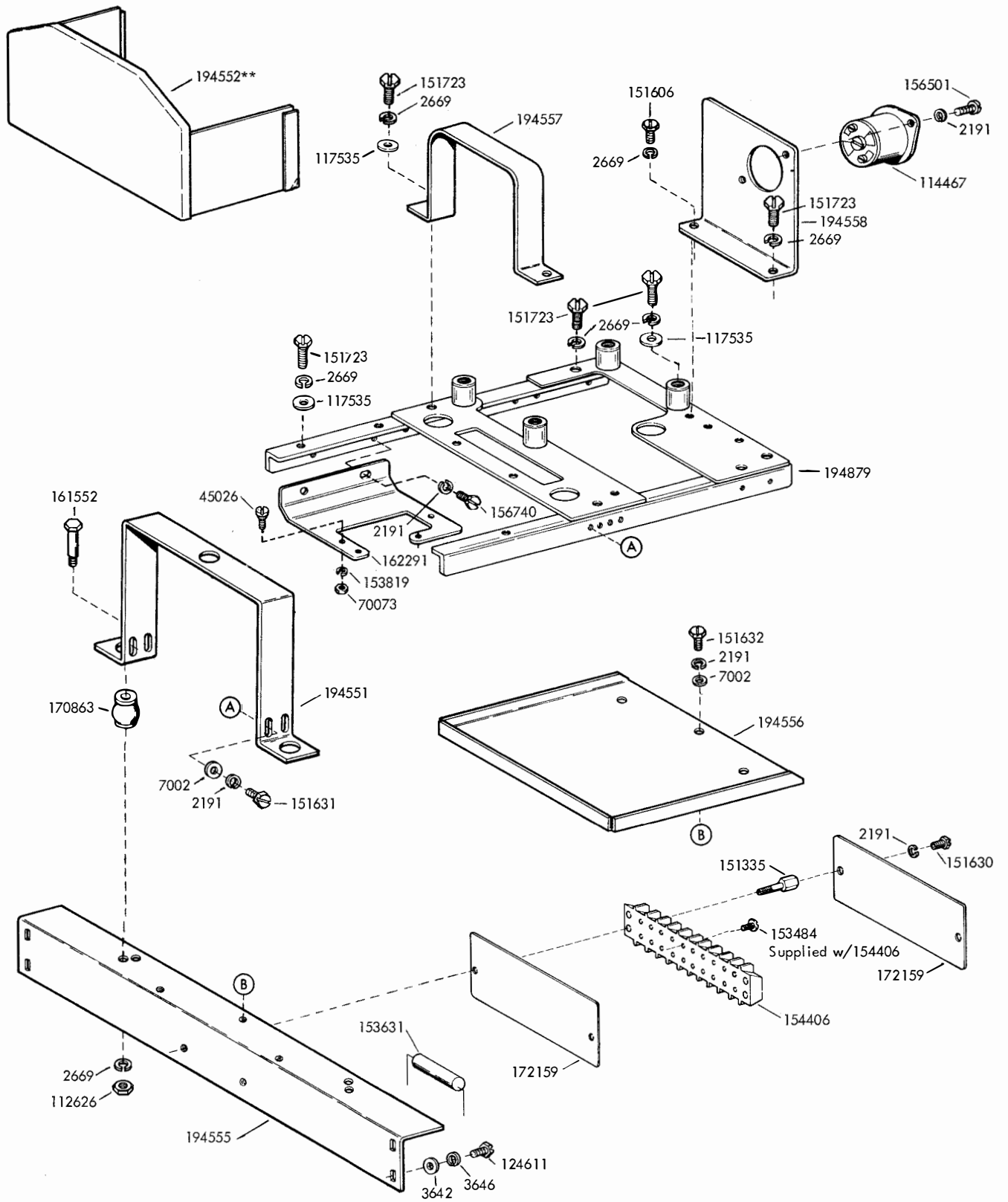


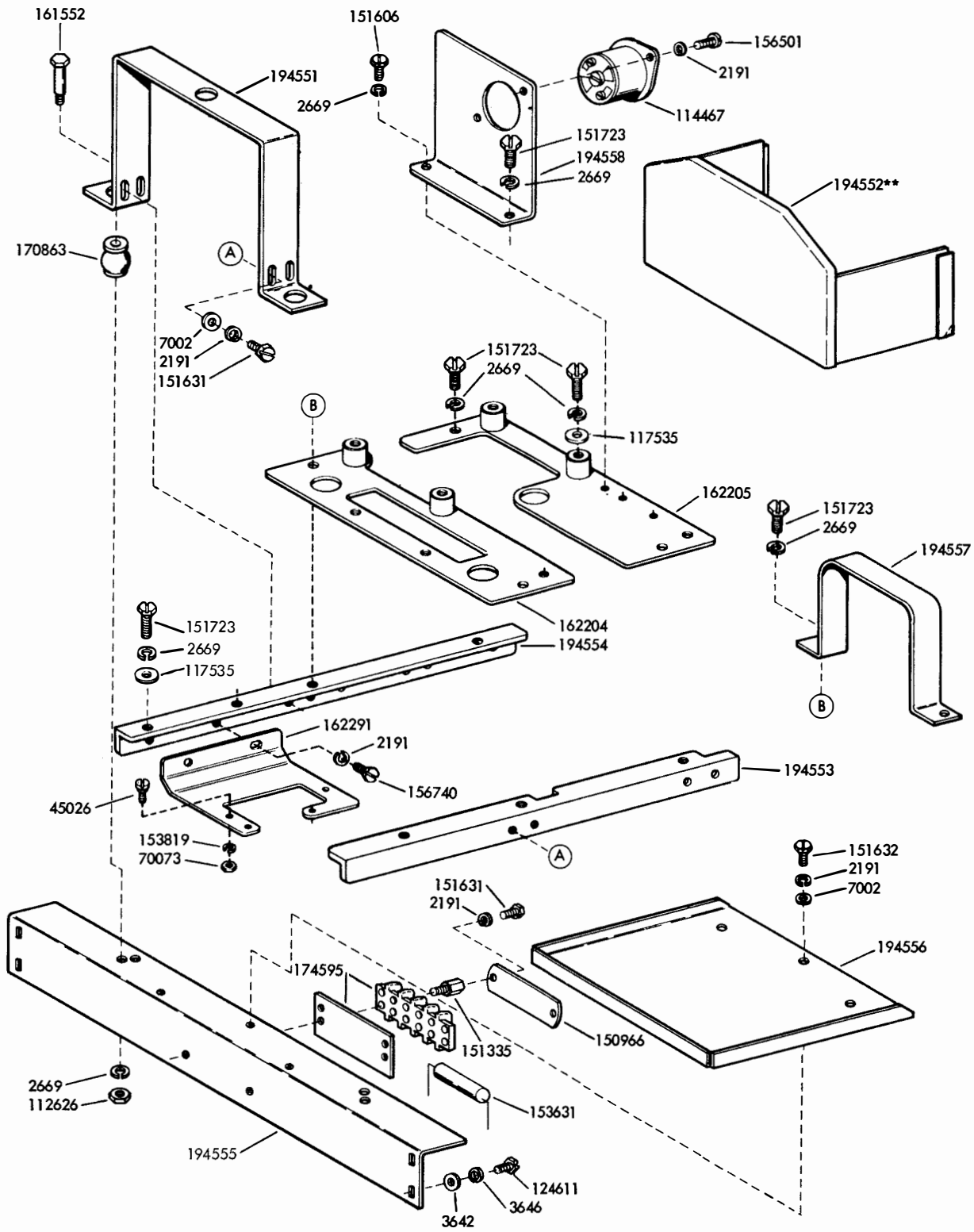
FIGURE 8. TRANSMITTER DRIVE SHAFT MECHANISM





\*\*Refer to page 1 for finish suffix

FIGURE 9. READER MOUNTING COMPONENTS



\*\*Refer to page 1 for finish suffix

FIGURE 10. READER MOUNTING COMPONENTS (EARLY DESIGN,

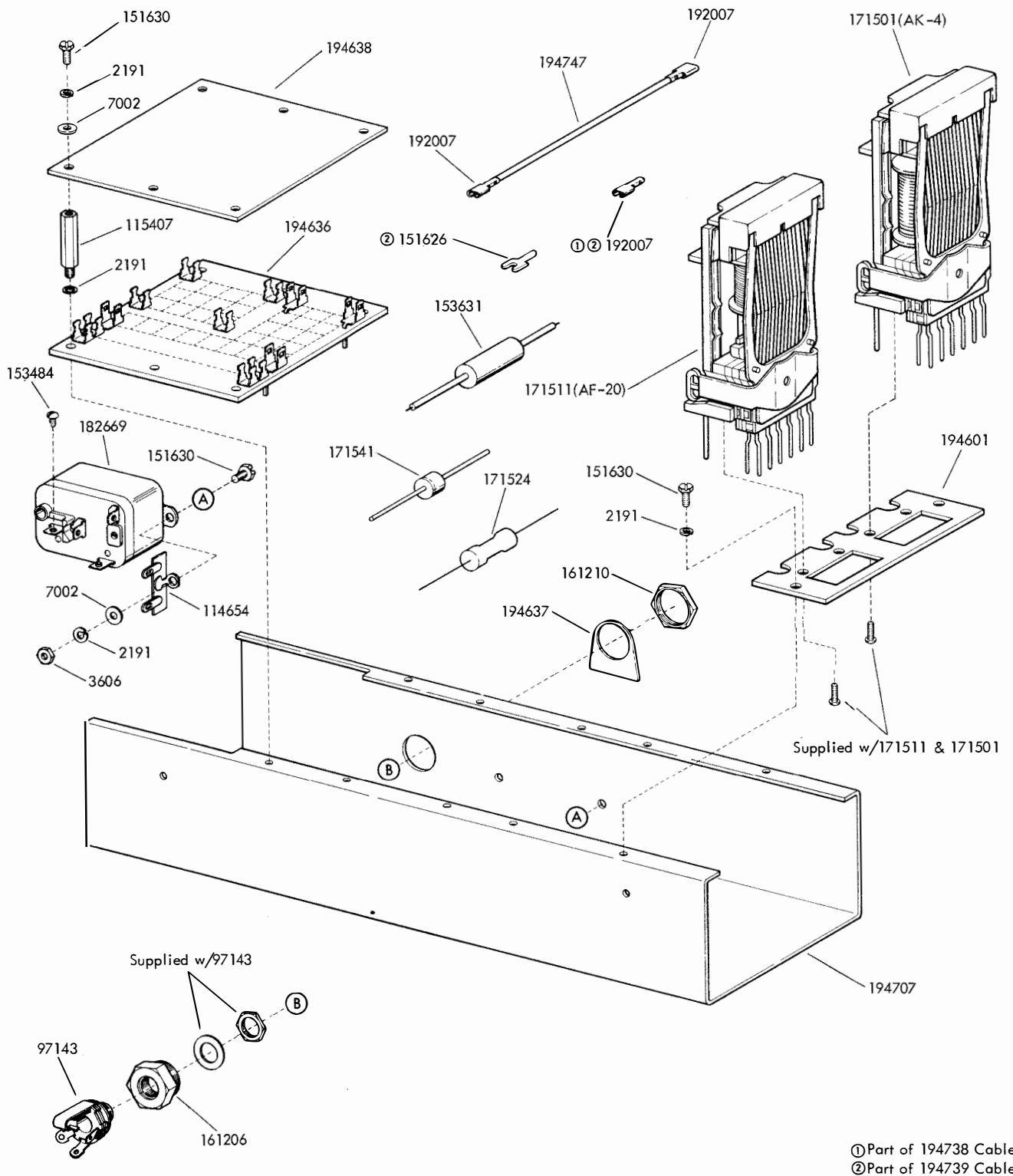


FIGURE 11. ELECTRICAL SERVICE UNIT

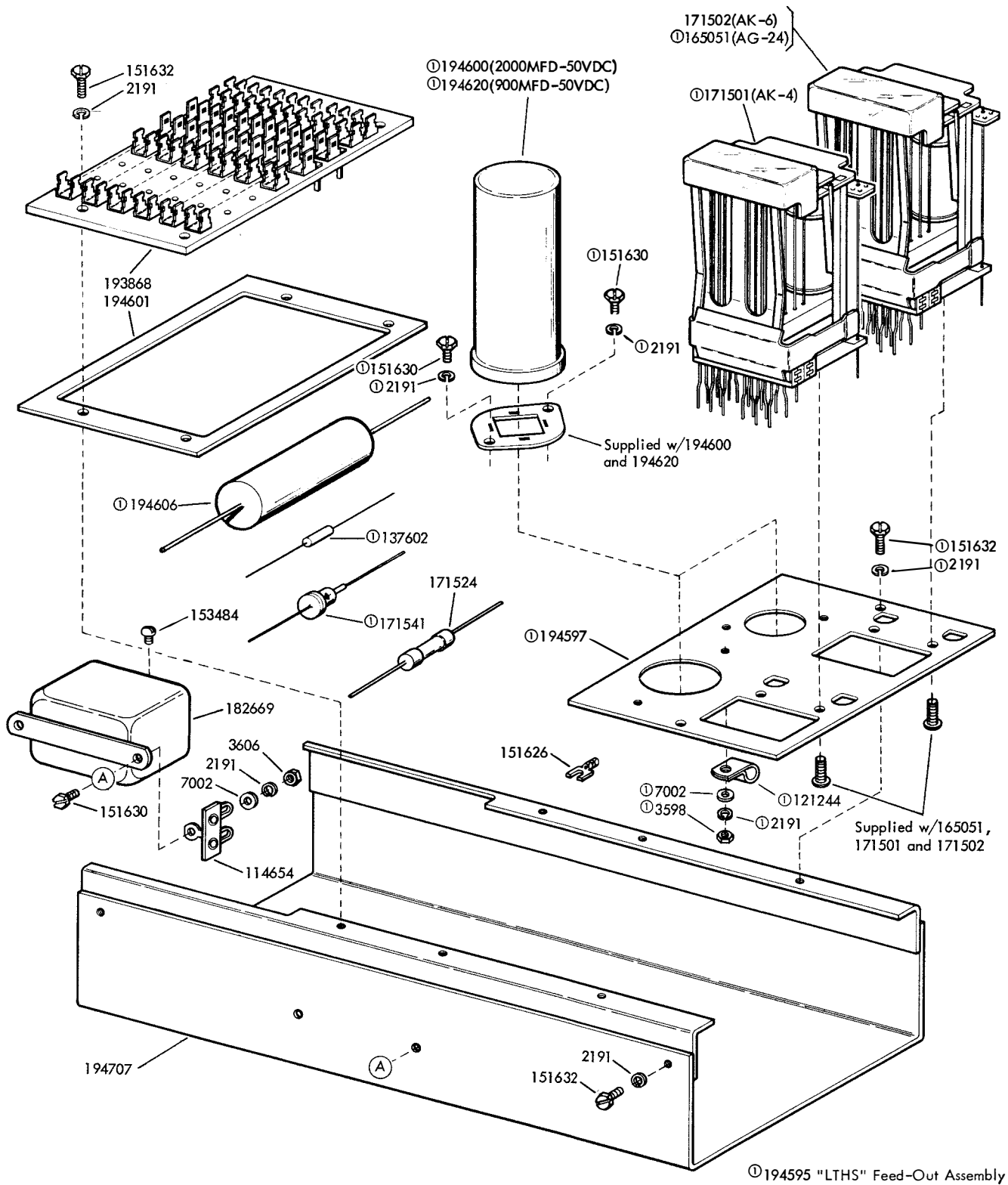
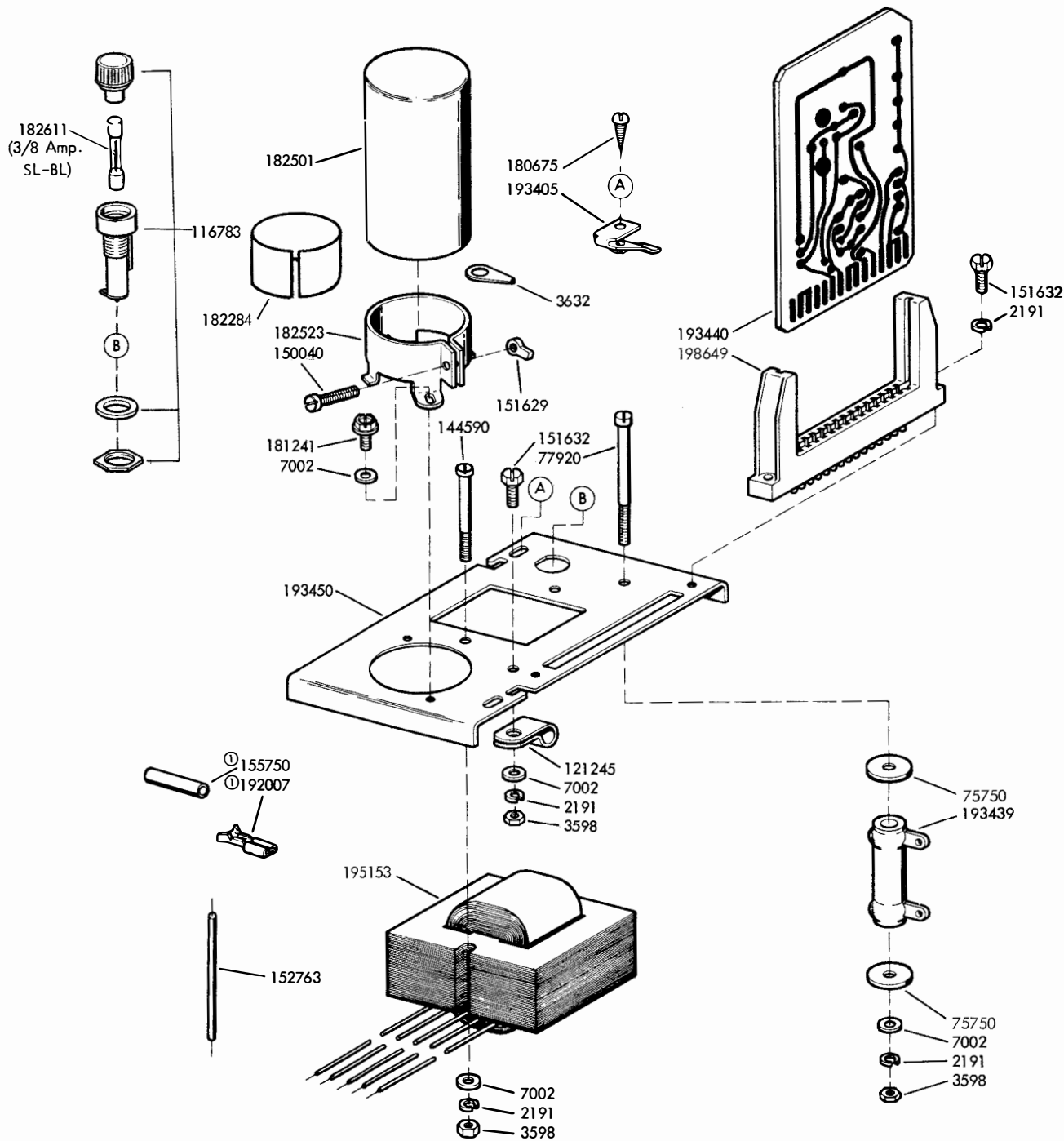


FIGURE 12. ELECTRICAL SERVICE UNIT (EARLY DESIGN)



① 193435 Cable Components

FIGURE 13. 193400 SELECTOR MAGNET DRIVER ASSEMBLY

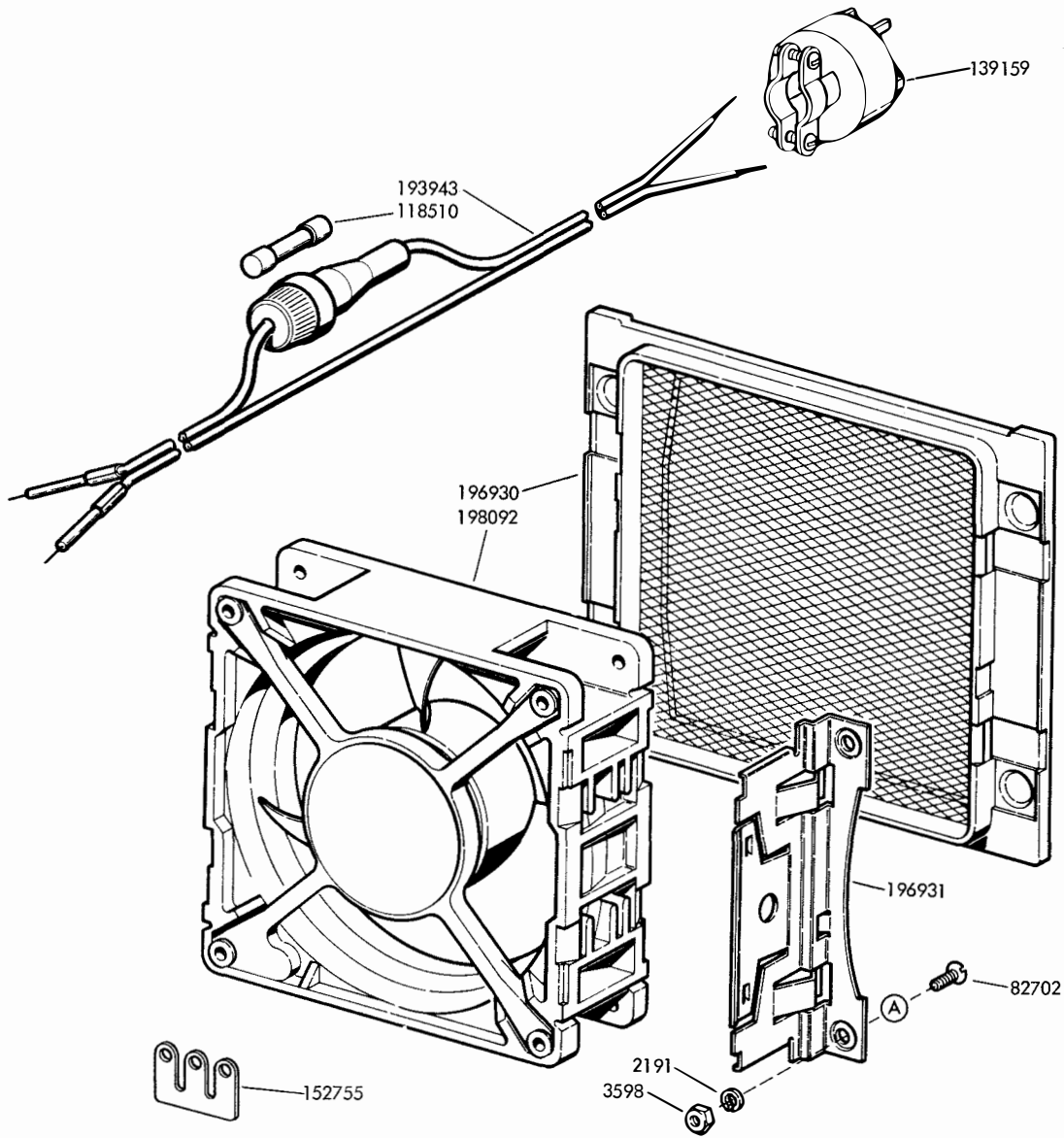


FIGURE 14. 323705 MODIFICATION KIT TO PROVIDE VENTILATION OF CABINETS

CABLE ASSEMBLIES											
COMPONENTS	PART NO.	194643	194644	194645	194646	194683	194697	194718	194719	194720	194741
CONNECTOR	114466					X				X	
	161239					X				X	X
	161595						X				X
	174721					X				X	
	174722					X					
	174723	X	X					X	X	X	
	182732						X				
	182733					X				X	
194691	X	X									
194692								X	X		
TERMINAL	151626			X	X		X				
	174785	X	X			X		X	X	X	
	192007	X	X			X		X	X	X	
SWITCH	155023					X				X	
INSULATING SLEEVE	155750						X				
	155754										X
	174737	X	X					X	X		
	174738	X	X					X	X		
CONNECTOR COVER	194740									X	
CONNECTOR TIE BRACKET	194742									X	

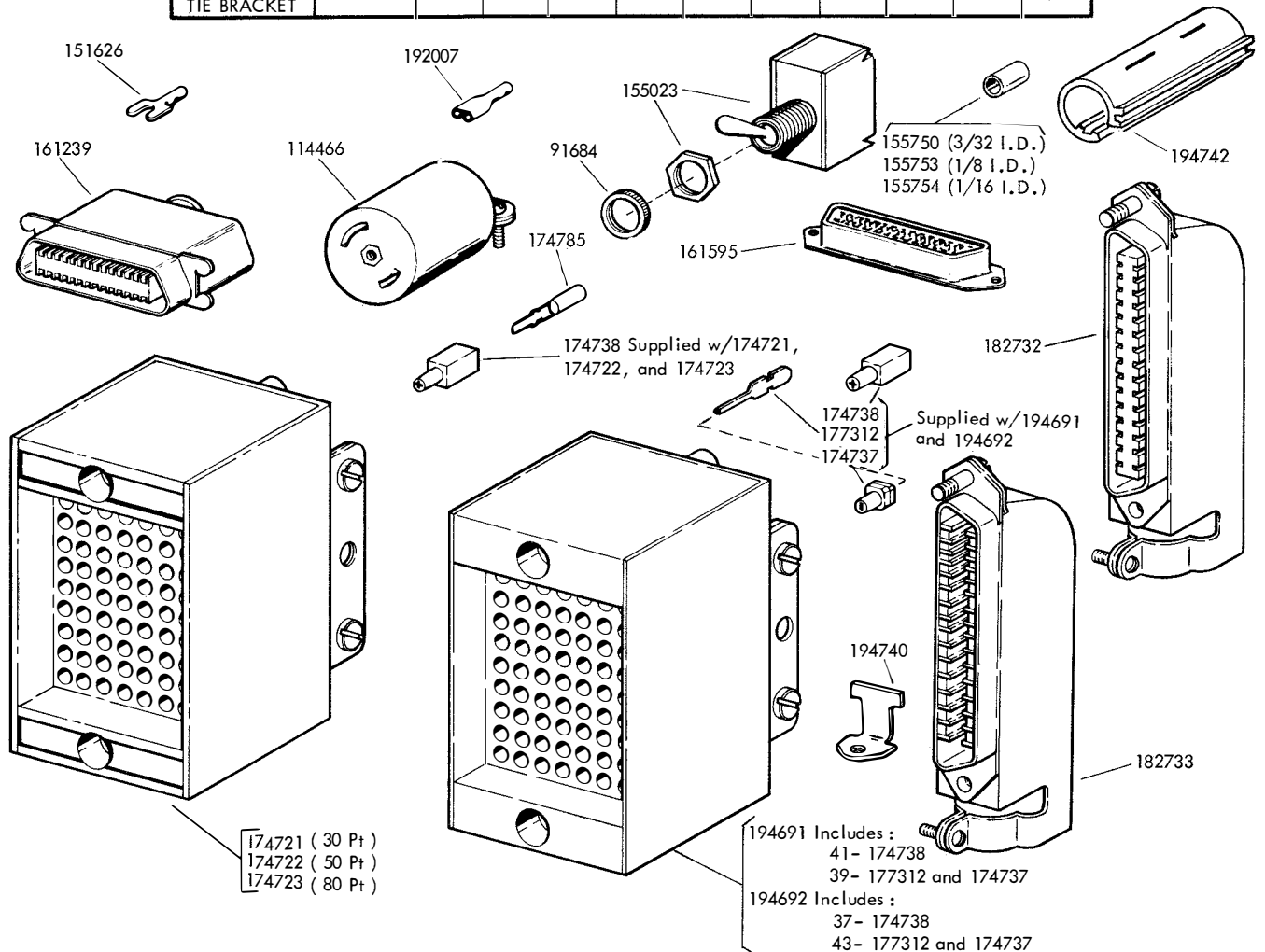


FIGURE 15. CABLE COMPONENTS

## NUMERICAL INDEX

Part Number	Description and Page Number	Part Number	Description and Page Number	Part Number	Description and Page Number
1170	Screw, 6-32 x 5/16 Flat 2	124611	Screw, 8-32 x 3/8 Hex 4, 5, 9, 10	151898	Spring 6
1210	Screw, 2-56 x 5/8 Fil 4	124878	Washer, Lock 4	152415	Stud, Adjusting 4
1264	Screw, 10-32 x 1/2 Flat 4, 5	125011	Washer, Flat 4, 5	152755	Strap, Terminal 14
1291	Screw, 6-32 x 3/4 Flat 2	125229	Nut, 6-32 Hex 4	152763	Jumper, 2" Yellow 13
2191	Washer, Lock 2 to 14	125250	Spring 5	153103	Screw, 4-40 Self-Tapping 3
2201	Nut, 5/16-32 Hex 4	125802	Washer, Flat 2	153441	Screw, 10-32 x 7/16 Hex 8
2669	Washer, Lock 4, 5, 7 to 10	129920	Fuse, 5 Amp SL-BL 3,5	153484	Screw, 6-32 Spl 9, 11, 12
3438	Washer, Flat 4, 5	137602	Resistor, 470 Ohm 12	153631	Network, Spark Suppression 9, 10, 11
3598	Nut, 6-40 Hex 2 to 6, 8, 12, 13, 14	139159	Connector, 3 Pt Plug 14	153817	Screw, 4-40 x 3/8 Hex 4
3599	Nut, 4-40 Hex 4	139679	Nut, 8-32 Hex 4, 5	153819	Washer, Lock 9, 10
3606	Nut, 6-40 Hex 6, 11, 12	139870	Jumper, 2-5/8" Black 3	154406	Block, Terminal 9
3632	Terminal 13	142158	Holder, Lamp 3	155023	Switch, DP-DT Toggle 3, 15
3640	Washer, Lock 4, 7	144590	Screw, 6-40 x 1-3/8 Fil 13	155551	Clamp, Bearing 8
3642	Washer, Flat 4, 5, 9, 10	145903	Mount, Vibration 7	155750	Sleeve, 3/32 ID x 1/2" Lg Insulating 3, 13, 15
3646	Washer, Lock 4, 5, 7, 9, 10	145904	Hinge, Right 2	155753	Sleeve, 1/8 ID x 1/2" Lg Insulating 15
5599	Nut, 8-32 Hex 7	145905	Hinge, Left 2	155754	Sleeve, 1/16 ID x 1/2" Lg Insulating 15
6345	Nut, 6-32 Hex 2, 5	145909	Channel, Left 4, 5	155861	Washer, Lock 4, 5
7002	Washer, Flat 2 to 13	145910	Channel, Right 4, 5	156501	Screw, 6-40 x 7/32 Fil 9, 10
8449	Spacer, .094" Thk 4	145912	Arm w/Posts 7	156740	Screw, 6-40 x 7/32 Hex 9, 10
34432	Washer, Flat 4, 8	145919	Brace, Left 5	156768	Screw, 8-32 x 9/32 Hex 7
35551	Screw, 10-32 x 3/8 Flat 4, 5	145920	Brace, Right 5	156805	Retainer 8
44035	Screw, 10-32 x 9/16 Hex 4, 5	145921	Frame, Inner 4	156806	Post 8
45026	Screw, 3-48 Shoulder 9, 10	145926	Plate w/Hub 7	156819	Shaft, Bearing 8
70073	Nut, 3-48 Hex 9, 10	145928	Hub 7	156821	Housing, Bearing 8
71073	Washer, Flat 4	145929**	Cup, 4-1/2" ID 4, 5	156993	Nut, Speed 2
74722	Washer, Flat 3	145930	Hub Assembly 7	158239	Lever, Tape 5
75750	Washer, Insulating 13	145934	Post 7	158788	Clamp, Bearing 8
76281	Terminal 3	145937	Shaft 7	158859	Post, Spring 6
77920	Screw, 6-40 x 1-15/16 Fil 13	145957	Stud 6	160370	Switch, NC Pushbutton 3
80342	Screw, 6-40 x 23/64 Hex 5	145976	Motor, 115V AC 7	160474	Stud, Eccentric 4, 5, 6
82474	Terminal 3	145982	Detent, Tape Reel 7	160664	Pin, Roll 7
82702	Screw, 6-40 x 9/32 Flat 14	146341	Bracket, Chad Depressor 6	161206	Bushing, Insulating 11
82832	Washer, Lock 4, 5	146343	Arm w/Hub 6	161210	Nut, 11/16 x 32 Hex 11
91684	Nut, 15/32-32 Ring 15	146355	Plunger 7	161239	Connector, 36 Pt Plug 15
93118	Washer, Lock 4	146357	Switch, Mercury 7	161246	Pinion, 20T 8
93521	Post, Spring 4	146513	Guide, Tape 6	161552	Screw, 10-32 Spl 9, 10
97143	Jack 11	146514	Guide, Tape 6	161595	Connector, 36 Pt Receptacle 15
98718	Washer, Flat 5, 7	146517	Spring 7	161708	Latch, Magnetic 2
101385	Spring 4	146518	Roller, Spring 6, 7	161711	Block, Guide 4, 5
103160	Jumper, 2-5/8" Black 3	146531	Faceplate 3	161716	Block, Support 4, 5
107116	Washer, Lock 3, 7	146612	Spring, Compression 7	162204	Plate 10
107398	Terminal 7	146698	Adapter, Tape Reel 7	162205	Plate 10
110743	Washer, Lock 2	149740**	Door, Front 2	162291	Bracket, Connector Mounting 9, 10
111017	Screw, 6-40 x 5/16 Fil 3	150040	Screw, 6-40 x 5/8 Fil 13	162725	Depressor, Chad 6
112626	Nut, 10-32 Hex 4, 5, 7, 9, 10	150966	Insulator, Terminal 10	162958	Switch, Mercury 7
114091	Nut, 6-40 Hex 5	151335	Stud 3, 9, 10	165051	Relay, 945 Ohm 12
114466	Connector, 3 Pt Receptacle 15	151346	Screw, 6-40 x 3/8 Fil 3, 5	165084	Button, Plug 3
114467	Connector, 3 Pt Plug 3, 9, 10	151411	Block, Terminal 3	170863	Mount, Vibration 9, 10
114654	Strip, Terminal 11, 12	151412	Insulator, Terminal Block 3	171501	Relay 11, 12
115407	Post 11	151416	Nut, 6-40 Hex 3	171502	Relay 12
116783	Holder, Fuse 3, 13	151606	Screw, 10-32 x 1/4 Hex 9, 10	171511	Relay 11
117366	Jumper, 8-1/2" Green 7	151626	Terminal 7, 11, 12, 15	171524	Resistor, 700 Ohm 11, 12
117535	Washer, Flat 9, 10	151629	Nut, 6-40 Lug 13	171541	Diode 11, 12
118510	Fuse, 1/4 Amp 14	151630	Screw, 6-40 x 1/4 Hex 3, 6, 9, 11, 12	171559	Lamp, 28V Incandescent 3
119636**	Button, Plug 2	151631	Screw, 6-40 x 5/16 Hex 8 to 10	171560	Lens, Red Lamp 3
119648	Ring, Retaining 6	151632	Screw, 6-40 x 3/8 Hex 2, 3, 4, 7, 8, 9, 10, 12, 13	171622	Holder, Lamp 3
119652	Ring, Retaining 4, 5, 7	151657	Screw, 6-40 x 1/4 Fil 3	172159	Insulator, Terminal Block 9
119654	Ring, Retaining 7	151686	Screw, 4-40 x 3/8 Fil 7	172715	Screw, 10-24 Captive 2
120175	Plate, ON-OFF 3	151687	Screw, 4-40 x 7/16 Fil 2	172720	Post, Spring 4, 5
121243	Clamp, 3/16 ID Cable 2, 4, 5	151694	Screw, 6-40 x 11/32 Fil 8	172763	Nut, Grip 2
121244	Clamp, 1/4 ID Cable 2, 12	151722	Screw, 6-40 x 3/16 Hex 8	173116	Pin 6
121245	Clamp, 5/16 ID Cable 7, 13	151723	Screw, 10-32 x 3/8 Hex 9, 10	173832	Holder, Lamp 3
121246	Clamp, 3/8 ID Cable 2	151827	Strap, Terminal 3	173930	Lamp, Red Neon 3
121248	Clamp, 1/2 ID Cable 2, 4, 5	151880	Nut, 4-40 Hex 4, 5		
121249	Clamp, 5/8 ID Cable 2				
121250	Clamp, 3/4 ID Cable 2				

\*\*Refer to page 1 for finish suffix



## NUMERICAL INDEX (Continued)

Part Number	Description and Page Number	Part Number	Description and Page Number	Part Number	Description and Page Number
174001	Connector, 3 Pt Receptacle 3	194554	Bar, Left 10	194678	Card, Identification 3
174570	Switch 4	194555	Bracket, Mounting 9, 10	194679	Card, Identification 3
174595	Block w/Insulator Terminal 10	194556	Pan 9, 10	194680	Card, Identification 3
174645	Switch, DP-DT Black Push 3	194557	Guard, Gear 9, 10	194681	Card, Identification 3
174678	Nut, Speed 3	194558	Plate, Connector Mounting 9, 10	194683	Cable Assembly 3, 15
174721	Connector, 30 Pt Plug Type 15			194691	Connector, 80 Pt Plug Type 15
174722	Connector, 50 Pt Plug Type 15	194559	Extension, Chad Chute 8	194692	Connector, 80 Pt Plug Type 15
174723	Connector, 80 Pt Plug Type 15	194560	Box, Chad 8	194697	Cable Assembly 15
174737	Insulator, White 15	194561	Bracket, Chad Chute Extension 8	194704**	Panel, Front 4
174738	Insulator, White 15			194707	Bracket, Mounting Plate 11, 12
174785	Terminal, Plug Type 15	194562**	Retainer, Chad Box 8	194708	Brace, Left 4
174866	Lamp, Light Yellow Neon 3	194563	Grommet, Rubber 8	194709	Brace, Right 4
176578	Handle 4, 5	194564**	Cover, Plastic 3	194713	Channel 4, 5
177312	Terminal 15	194567**	Panel, Control 3	194714	Hanger, Right 4, 5
179495	Screw, 10-24 x 1/4 Hex 4, 5	194568**	Panel 3	194715	Hanger, Left 4, 5
180675	Screw, #6 Self-Tapping 13	194570	Guide, Tape 3	194716	Plate, Instruction 3
181241	Screw w/Lockwasher, 6-40 x 1/4 Hex 13	194571	Insert 8	194718	Cable Assembly 15
		194572	Bracket w/Hinge 3	194719	Cable Assembly 15
182284	Insulator, .015" Thk 13	194595	Feedout Assembly 12	194720	Cable Assembly 3, 15
182501	Capacitor, 1,500 MFD 13	194597	Plate, Mounting 12	194721**	Button, Plug 3
182523	Clamp, 1-3/8" ID Mounting 13	194600	Capacitor, 2,000 MFD 12	194723**	Button, Plug 3
182611	Fuse, 3/8 Amp SL-BL 13	194601	Bracket, Relay Mounting 11, 12	194729	Trim 3
182669	Relay, Power 11, 12	194603	Post, Tape Lever Pivot 5	194738	Cable w/Terminals 11
182732	Connector, 50 Pt Plug 15	194604	Post, Spring 5	194739	Cable w/Terminals 11
182733	Connector, 50 Pt Receptacle 15	194606	Capacitor, 10 MFD 12	194740	Bracket 15
192007	Terminal, Tab Type 11, 13, 15	194620	Capacitor, 900 MFD 12	194741	Cable Assembly 15
193400	Driver Assembly, Selector Magnet 1, 13	194622	Panel 3	194742	Cover, Connector 15
		194636	Board, Terminal 11	194747	Strap, 5" Lg 11
193405	Nut, Speed 13	194637	Plate 11	194748	Reel, Tape 4
193435	Cable w/Terminals 13	194638	Cover, Terminal Board 11	194879	Plate 9
193439	Resistor, 32 Ohm 13	194640	Cable w/Terminals 3	195153	Transformer 13
193440	Card, Circuit 13	194643	Cable Assembly 15	196930	Grille 14
193450	Plate, Mounting 13	194644	Cable Assembly 15	196931	Clip 14
193868	Board, Terminal 12	194645	Cable w/Terminals 15	198085	Holder, Card 2
193943	Cable Assembly 14	194646	Cable w/Terminals 15	198092	Fan 14
194500**	Cabinet 2, 3, 4, 5, 8	194654	Bracket 4	198649	Connector, 15 Pt Circuit Card 13
194535	Plate, Instruction 5	194655	Bushing 4		
194549**	Panel, Front 5, 6	194673	Shaft 4	198671	Holder, Card 2
194550	Frame, Inner 5	194674	Lever w/Nut 4	199901	Reel, Tape 4, 7
194551	Bracket, Mounting 9, 10	194675	Lever, Tape 4	323704**	Panel, Rear 2
194552**	Cover 9, 10	194676	Screw, 4-40 Shoulder 4	323705	Modification Kit 1, 14
194553	Bar, Right 10	194677	Card, Identification 3		

\*\*Refer to page 1 for finish suffix

Classification: A  
Billable to Telco: Yes \_\_\_\_\_ No X

APPARATUS AFFECTED: 35A and 35B Converter-Reader

PART AFFECTED: TP156656 Strap Assembly

REASON: To provide an insulating cover for the A. C. power terminals.

CHANGE: A TP321325 connector cover is added to the front panel assembly and slip fits over the TP114467 power connector plug. The TP156656 strap assembly attached to the ground terminal of the TP114467 power connector plug is replaced by TP327712 strap assembly.

PUBLICATION AFFECTED: See SUPPLEMENTAL INFORMATION.

IDENTIFICATION: The TP321325 connector cover is a cone shaped cover 1-7/8 inch long and is made of black rubber. The TP156656 strap assembly is equipped with two closed type terminals and is 2-3/4 inches long. The TP327712 strap assembly is equipped with two closed type terminals and is 7-inches long.

The TP327712 strap assembly (frame ground strap) and the two wire leads terminating at the power plug are inserted through a small hole in the funnel end of the cover.

INTERCHANGEABILITY: The TP156656 strap assembly cannot be used with the TP321325 connector cover.

PARTS AVAILABILITY: The TP321325 connector cover is available in limited quantities. The TP327712 strap assembly is available.

SUPPLEMENTAL INFORMATION: The BSP Section covering parts has not been published; therefore, this information can be issued as an Appendix to Section 570-101-701, Issue 3. The parts are illustrated in Teletype Bulletin 1192B, Pages 1-3 and 1-8, Original.

REFERENCES: None

TCN INDEX CLASSIFICATION: 35 AH 25