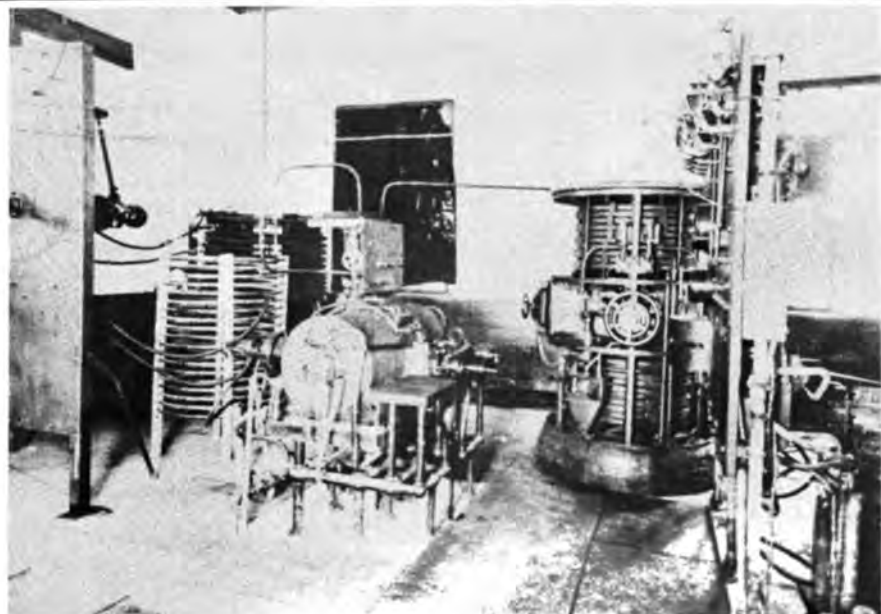


# 'NBA' BALBOA



NBA, DARIEN, 1928. NOT MANY HAVE SEEN A NAKED ARC. THIS IS THE FEDERAL 100 KW WHICH PUT 200 AMPERES INTO THE TRIATIC AND HAS PROBABLY BEEN HEARD BY ALL THE OLD TIMERS. ON DECK IS THE POULSEN 'THING' WHICH WAS REMOVED SHORTLY AFTER THE PICTURE WAS TAKEN. TO THE RIGHT OF THE ARC WE SEE THE CONTROL PANEL END VIEW. THE SHEET IRON MAGNET COVERS HAD BEEN REMOVED TO ALLOW REPLACING OF THE PIPES CARRYING THE COOLING WATER FROM CHAMBER AND DOOR TO THE SPILL FUNNEL ON THE ARC BASE.

NBA, BALBOA, OPERATING POSITIONS LOOKING NORTH IN THE GLASS ROOM. FACING RECEIVER WAS THE MODEL RW, FINAL VERSION OF THE XW DEVELOPED BY COMMANDER WILLIAMS... IT WAS USED ON NSS AND THE SE143 VERY LOW FREQUENCY RECEIVER, NOT VIIBLE, WAS FOR THE NAS' ARCS.



NBA, DARIEN, 1928. PHOTO FROM THE WATER-TANK HILL NEAR THE O-I-C'S HOUSE. SMALL BUILDING AT LEFT WITH ONE WINDOW, WAS THE 44,000 VOLT 25-CYCLE MAIN TRANSFER LINE AND STEP-DOWN-TO-440 V. SUBSTATION. BEHIND IT IS THE POWER HOUSE. BEHIND THE FAR LEG IS THE OFFICE AND SUPPLY BUILDING. THE LARGE BUILDING WAS THE TWO-DECKER BARRACKS. NEXT IS THE OLD POWER HOUSE THEN BEING USED AS A MACHINE SHOP. AT FAR RIGHT ARE SOME OF THE SMALL HOUSES OF THE LABORERS, JAMAICANS AND BARBADIANS. GATUN LAKE IS IN THE DISTANCE. AT THE FAR RIGHT EDGE, THE LONG ISLAND MARKS THE TURNING POINT FOR SHIPS GOING INTO, OR COMING FROM THE GAILLARD CUT.

CONTROL DESK AT NBA, BALBOA IN MAY 1929. FOR A TIME I RELIEVED HAROLD CRAIG (SOWP 308-SGP) AS CONTROL OPERATOR. TWO TELETYPE ARE IN THE SETBACK OF THE WALL COUNTER - ONE TO PORT CAPTAIN AND ONE TO PANAMA TELEGRAPH OFFICE. ON THE MEZZANINE WE HAD SPACE FOR SHORT WAVE SPECIAL OPERATIONS WHEN FLEETS WERE IN THE VICINITY ON MANEUVERS OR WHEN THE ARMY HAD A HOT-SHOT DRILL BEHIND THE GLASS PANELS TO THE RIGHT WERE THE SHIP OPERATORS (COMM'L AND NAVY CIRCUITS) THE LONG WAVE RECEIVERS FOR THE FLEET BROADCASTS, THE NSS CIRCUIT AND THE NAZ CIRCUIT TO MANAGUA WITH THE MARINE CORPS SANDINO HUNTERS. THE TELEGRAPH CIRCUITS, 5 OR 6 OF THEM, CAME TO THE CONTROL DESK TO THE SWING-ARM SOUNDERS.



NBA, BALBOA, OPERATING POSITIONS, LOOKING SOUTH IN THE GLASS ROOM. FIRST RECEIVER, WITH A VOLTMETER SHOWING WAS AN SE1420 (IP 501) ONE OF TWO AT THE COMM'L SHIP'S POSITION. NEXT POSITION WAS NAVY SHIP'S CIRCUIT. THEN FLEET BROADCAST POSITION AND, ON THE FAR BOOTH, NSS AND NAZ. THE CONGLOMERATION OF WIRES ON THE SLATE SLAB ON THE BULKHEAD WAS BUILT (BY ME) TO REPLACE THE GREAT KNIFE BLADE ANTENNA GROUNDING SWITCHES THAT HAD BEEN MOUNTED ON THE WINDOW CASINGS. WHEN TROPICAL LIGHTNING PREVAILED THESE SPDT SWITCHES WERE TO BE THROWN BY THE OPERATORS TO THE GROUND POSITIONS. TWO MEN WERE BURNED BY LIGHTNING AS THEY HELD THE BLADES HALFWAY FROM GROUNDING. THE SEVEN ANTENNAS WERE CONNECTED TO THE TOP ROW OF POINTED BRONZE STRAPS - THE HORIZONTAL SLAB AT THEIR POINTS WAS GROUNDED. THE RECEIVERS CONNECTED TO THE LOWER TEN BLOCKS. FIRE FROM LIGHTNING WOULD HISS AND BUZZ FROM POINTS TO GROUND. PICTURES AND COMMENTS FROM COLLECTION OF M.G. "AB" ABERNATHY, SOWP - 1610-SGP (CURRENTLY TREASURER, STAR OF INDIA CHAPTER IV) "NBA" WAS INDEED A WELL KNOWN STATION AS ALL SHIPS OF THE WORLD TRANSITTING THE PANAMA CANAL WOULD FURNISH ARRIVAL TIME/DATE AND OTHER BUSINESS THROUGH THE "NBA" STATION.