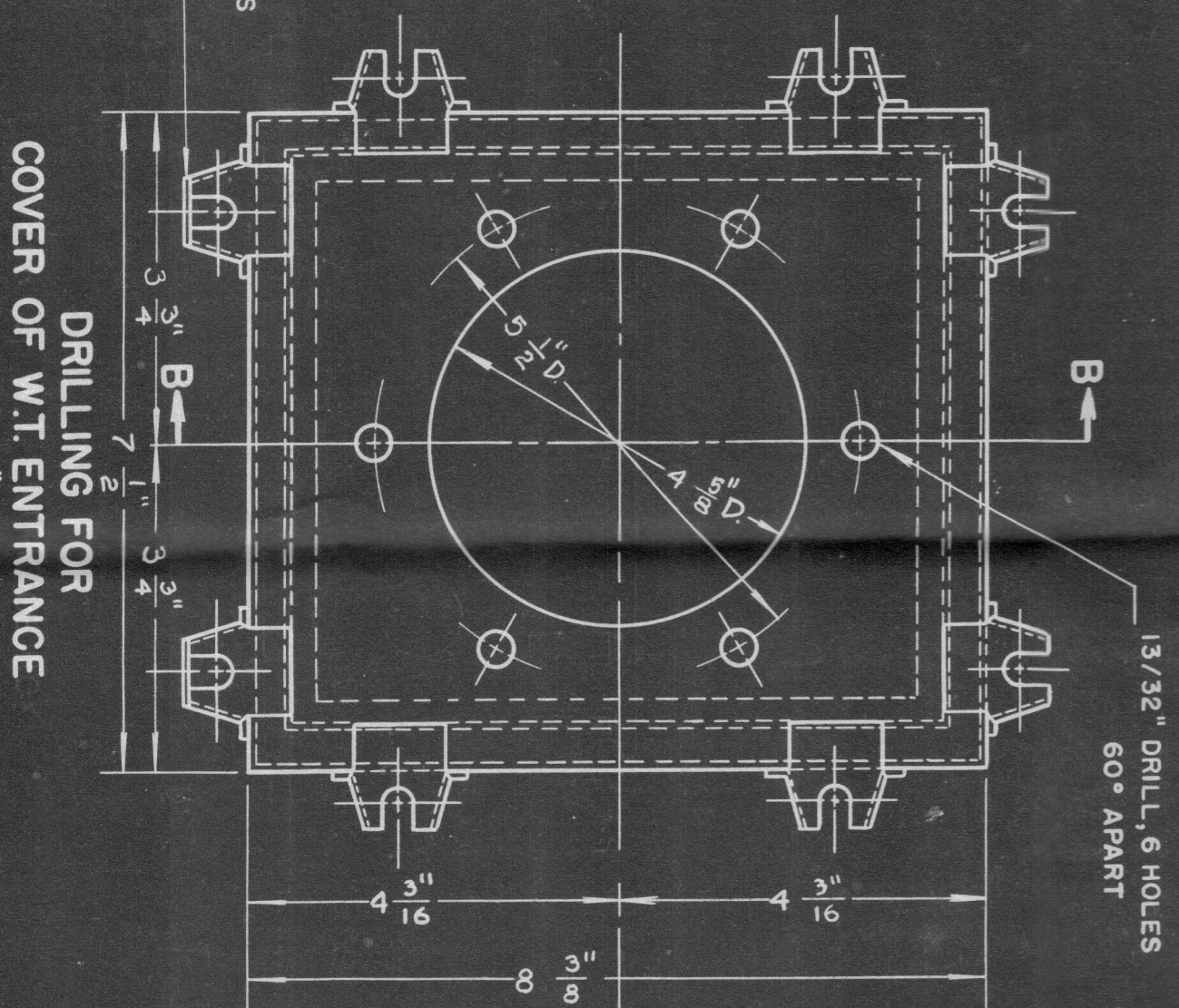
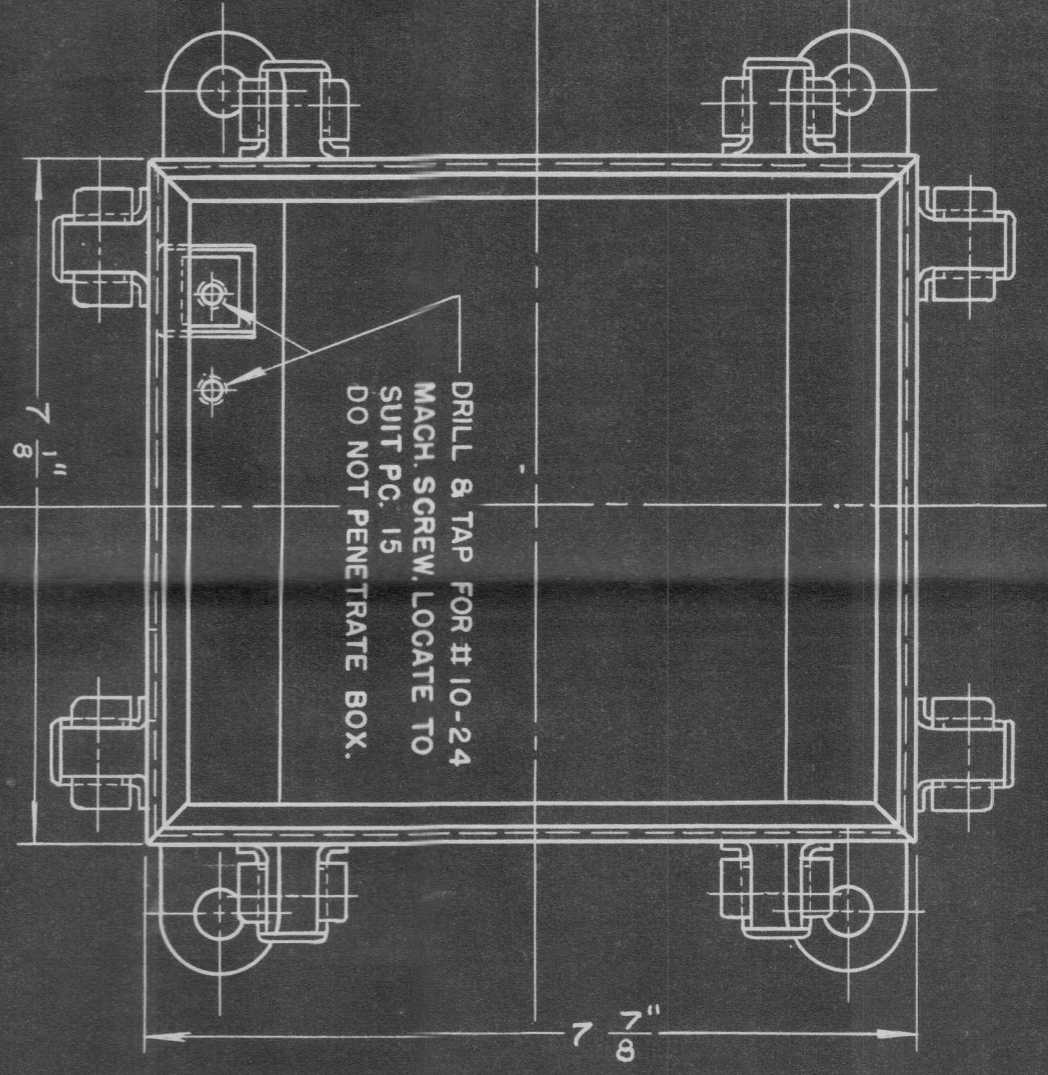
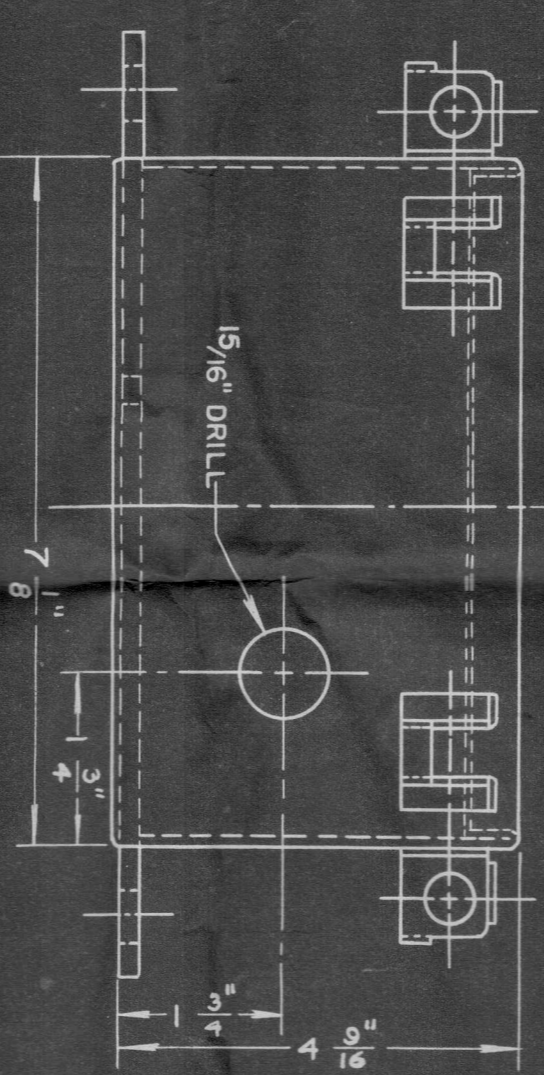


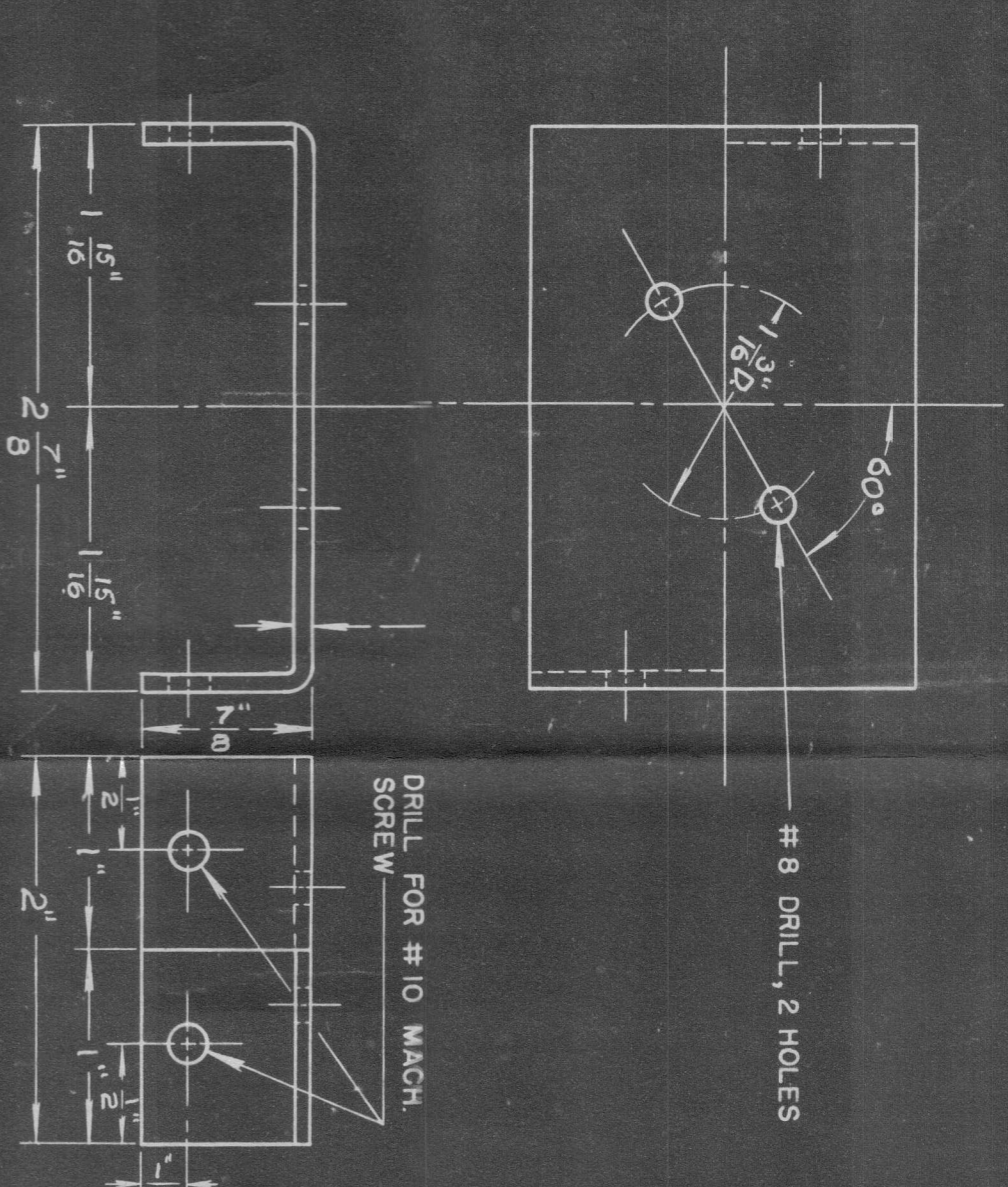
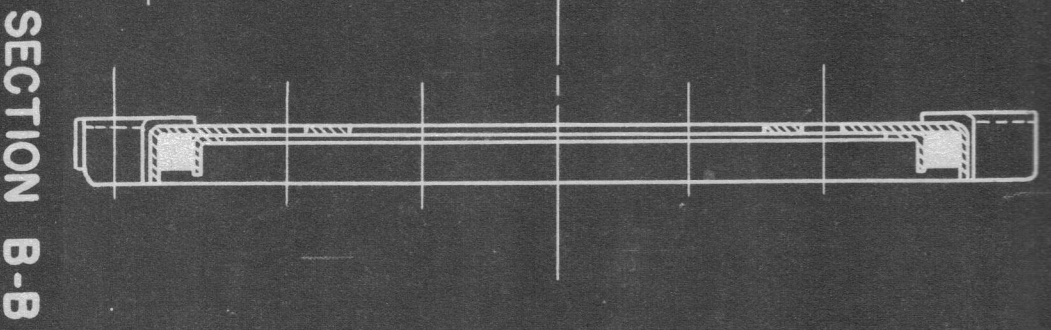
WELD BAR ACROSS EARS  
TO PROVIDE HINGE AT  
BOTTOM OF COVER.



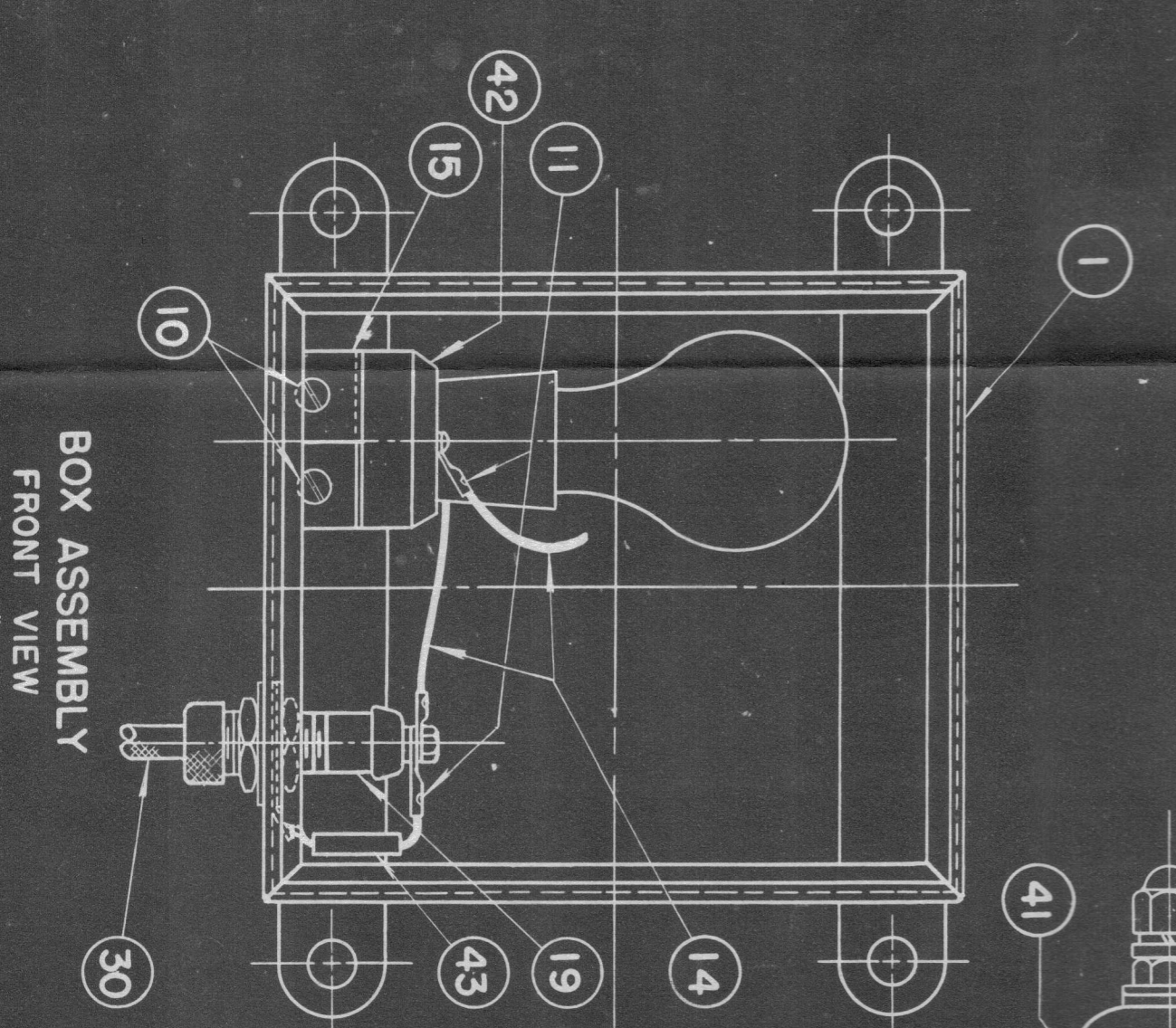
**DRILLING FOR  
WATERTIGHT ENTRANCE BOX**  
SCALE: 6"=1 FT.



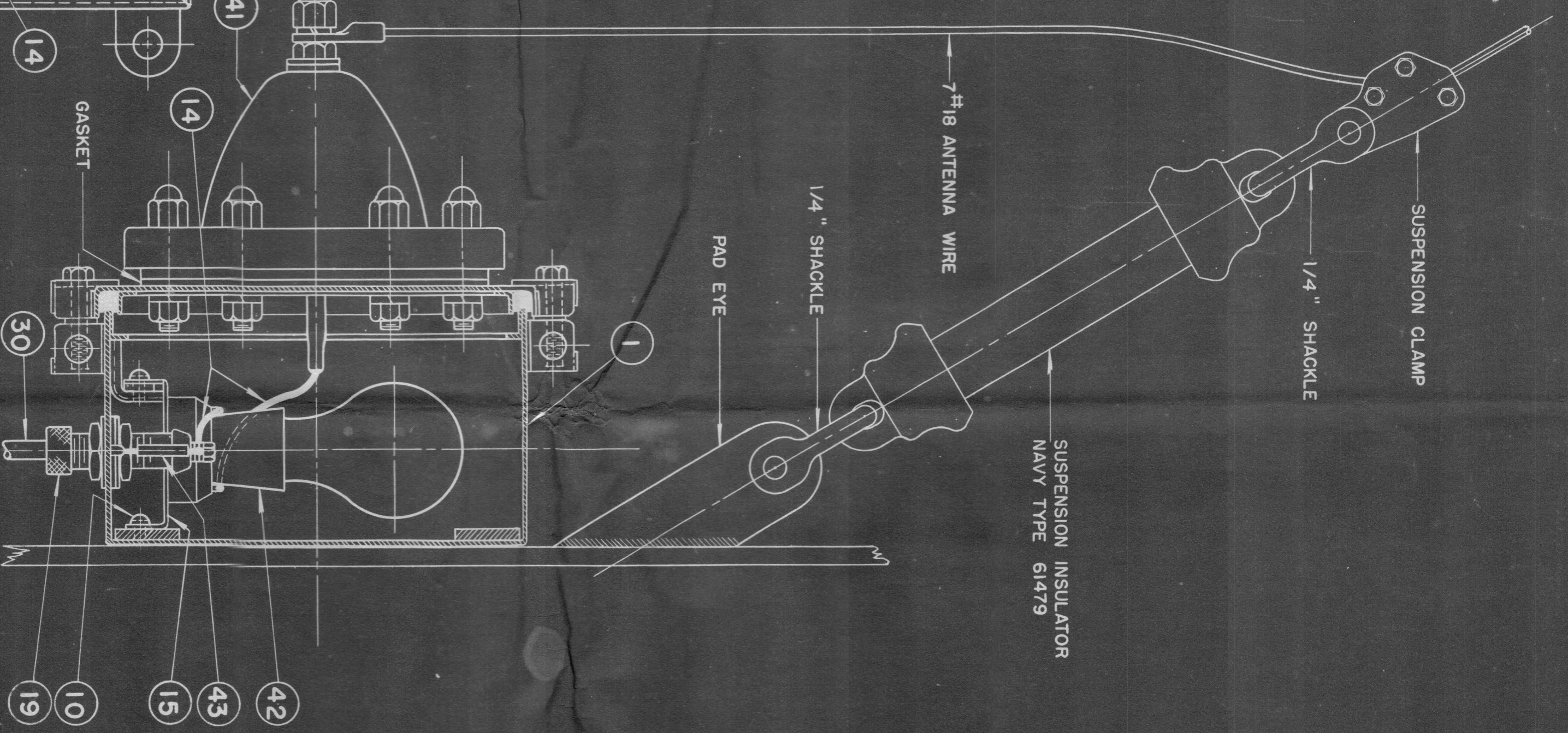
**DRILLING FOR  
COVER OF W.T. ENTRANCE**  
SCALE: 6"=1 FT.



**15 BRACKET  
FOR  
PROTECTIVE LAMP**  
SCALE: 12"=1 FT.



**BOX ASSEMBLY  
FRONT VIEW**  
SCALE: 6"=1 FT.



**DETAIL A  
ENTRANCE ASSEMBLY  
FOR OUTSIDE INSTALLATIONS**  
SCALE: 6"=1 FT.

RADIO DIVISION NAVY DEPARTMENT		BUREAU OF SHIPS WASHINGTON, D.C.	
<b>RECEIVING ANTENNA TRANSMISSION LINE SYSTEM</b>			
ARRANGEMENT AND DETAILS			
TYPE PLAN			
SCALE: AS SHOWN		DATE: 10 NOV. 1944	
<b>RE 62F</b>		<b>151</b>	
SHEET 20 OF 5			