

UNITED STATES DEPARTMENT OF JUSTICE OFFICE OF THE ATTORNEY GENERAL

UNITED STATES

Page	Section	Page
1	UNITED STATES DEPARTMENT OF JUSTICE	1
2	OFFICE OF THE ATTORNEY GENERAL	2
3	WASHINGTON, D.C. 20530	3
4	UNITED STATES DEPARTMENT OF JUSTICE	4
5	OFFICE OF THE ATTORNEY GENERAL	5
6	WASHINGTON, D.C. 20530	6
7	UNITED STATES DEPARTMENT OF JUSTICE	7
8	OFFICE OF THE ATTORNEY GENERAL	8
9	WASHINGTON, D.C. 20530	9
10	UNITED STATES DEPARTMENT OF JUSTICE	10
11	OFFICE OF THE ATTORNEY GENERAL	11
12	WASHINGTON, D.C. 20530	12
13	UNITED STATES DEPARTMENT OF JUSTICE	13
14	OFFICE OF THE ATTORNEY GENERAL	14
15	WASHINGTON, D.C. 20530	15
16	UNITED STATES DEPARTMENT OF JUSTICE	16
17	OFFICE OF THE ATTORNEY GENERAL	17
18	WASHINGTON, D.C. 20530	18
19	UNITED STATES DEPARTMENT OF JUSTICE	19
20	OFFICE OF THE ATTORNEY GENERAL	20
21	WASHINGTON, D.C. 20530	21
22	UNITED STATES DEPARTMENT OF JUSTICE	22
23	OFFICE OF THE ATTORNEY GENERAL	23
24	WASHINGTON, D.C. 20530	24
25	UNITED STATES DEPARTMENT OF JUSTICE	25
26	OFFICE OF THE ATTORNEY GENERAL	26
27	WASHINGTON, D.C. 20530	27
28	UNITED STATES DEPARTMENT OF JUSTICE	28
29	OFFICE OF THE ATTORNEY GENERAL	29
30	WASHINGTON, D.C. 20530	30

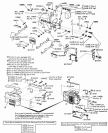


FIGURE 1. GLOBAL DISTRIBUTION OF *Phragmites*



FIGURE 1. MEMBER STATES



**Figure 5.** Schematic representation of the hippocampal network.





Fig. 1. Schematic diagram of a cross-linked polymer network structure.

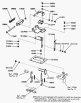


Figure 1. Sample organizational chart



**Fig. 1** Exploded view of a house showing its components. Adapted from the author's own work

**2.1.1.1** *Example 1*

Figure 1 shows an exploded view of a house. The house is composed of many parts, each of which is labeled with a letter. The parts are: A (Roof), B (Front Wall), C (Back Wall), D (Left Wall), E (Right Wall), F (Front Door), G (Back Door), H (Window), I (Floor), J (Foundation), K (Basement), L (Attic), M (Staircase), N (Kitchen), O (Living Room), P (Bedroom), Q (Bathroom), R (Garage), S (Porch), T (Driveway), U (Lawn), V (Fence), W (Garden), X (Hedges), Y (Trees), Z (Sheds).

**Fig. 1** Exploded view of a house showing its components





FIGURE 2. MECHANISM OF POLYMERIZATION

TABLE I. GRAFTING EFFICIENCY MEASUREMENT

Run	Monomer	Time (hr)	Temperature (°C)	Conversion (%)	Efficiency (%)
1	Styrene	24	60	100	100
2	Styrene	24	60	100	100
3	Styrene	24	60	100	100
4	Styrene	24	60	100	100
5	Styrene	24	60	100	100
6	Styrene	24	60	100	100
7	Styrene	24	60	100	100
8	Styrene	24	60	100	100
9	Styrene	24	60	100	100
10	Styrene	24	60	100	100
11	Styrene	24	60	100	100
12	Styrene	24	60	100	100
13	Styrene	24	60	100	100
14	Styrene	24	60	100	100
15	Styrene	24	60	100	100
16	Styrene	24	60	100	100
17	Styrene	24	60	100	100
18	Styrene	24	60	100	100
19	Styrene	24	60	100	100
20	Styrene	24	60	100	100
21	Styrene	24	60	100	100
22	Styrene	24	60	100	100
23	Styrene	24	60	100	100
24	Styrene	24	60	100	100
25	Styrene	24	60	100	100
26	Styrene	24	60	100	100
27	Styrene	24	60	100	100
28	Styrene	24	60	100	100
29	Styrene	24	60	100	100
30	Styrene	24	60	100	100
31	Styrene	24	60	100	100
32	Styrene	24	60	100	100
33	Styrene	24	60	100	100
34	Styrene	24	60	100	100
35	Styrene	24	60	100	100
36	Styrene	24	60	100	100
37	Styrene	24	60	100	100
38	Styrene	24	60	100	100
39	Styrene	24	60	100	100
40	Styrene	24	60	100	100
41	Styrene	24	60	100	100
42	Styrene	24	60	100	100
43	Styrene	24	60	100	100
44	Styrene	24	60	100	100
45	Styrene	24	60	100	100
46	Styrene	24	60	100	100
47	Styrene	24	60	100	100
48	Styrene	24	60	100	100
49	Styrene	24	60	100	100
50	Styrene	24	60	100	100
51	Styrene	24	60	100	100
52	Styrene	24	60	100	100
53	Styrene	24	60	100	100
54	Styrene	24	60	100	100
55	Styrene	24	60	100	100
56	Styrene	24	60	100	100
57	Styrene	24	60	100	100
58	Styrene	24	60	100	100
59	Styrene	24	60	100	100
60	Styrene	24	60	100	100
61	Styrene	24	60	100	100
62	Styrene	24	60	100	100
63	Styrene	24	60	100	100
64	Styrene	24	60	100	100
65	Styrene	24	60	100	100
66	Styrene	24	60	100	100
67	Styrene	24	60	100	100
68	Styrene	24	60	100	100
69	Styrene	24	60	100	100
70	Styrene	24	60	100	100
71	Styrene	24	60	100	100
72	Styrene	24	60	100	100
73	Styrene	24	60	100	100
74	Styrene	24	60	100	100
75	Styrene	24	60	100	100
76	Styrene	24	60	100	100
77	Styrene	24	60	100	100
78	Styrene	24	60	100	100
79	Styrene	24	60	100	100
80	Styrene	24	60	100	100
81	Styrene	24	60	100	100
82	Styrene	24	60	100	100
83	Styrene	24	60	100	100
84	Styrene	24	60	100	100
85	Styrene	24	60	100	100
86	Styrene	24	60	100	100
87	Styrene	24	60	100	100
88	Styrene	24	60	100	100
89	Styrene	24	60	100	100
90	Styrene	24	60	100	100
91	Styrene	24	60	100	100
92	Styrene	24	60	100	100
93	Styrene	24	60	100	100
94	Styrene	24	60	100	100
95	Styrene	24	60	100	100
96	Styrene	24	60	100	100
97	Styrene	24	60	100	100
98	Styrene	24	60	100	100
99	Styrene	24	60	100	100
100	Styrene	24	60	100	100

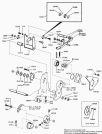


FIGURE 1. MECHANICAL ASSEMBLY



FIGURE 1. Schematic diagram of the process flow.

FIGURE 2. Schematic diagram of the process flow.



FIGURE 1. SCHEMATIC





Figure 1. Block diagram of a control system.

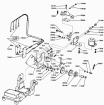


FIGURE 12. THE INTERNATIONAL SPACE STATION

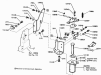


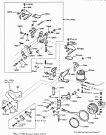




FIG. 10. Same as in Fig. 9, but for 1000-hPa potential height anomalies.



FIGURE 11. VASCULAR BUNDLES IN A STEM



**Figure 10.** Schematic representation of hippocampal molecular relations. See text for details.



FIGURE 11. SELF-ALIGNING BALL BEARING MECHANISM



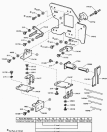


FIGURE 1. MICROSCOPE PARTS LIST



ITEM	QTY	DESCRIPTION	UNIT
1	1	BOLT	PC
2	1	BEARING	PC
3	1	RIM	PC
4	1	TIRE	PC

1/2" x 1/4"

1/2" x 1/4" x 1/2"

1/2" x 1/4" x 1/2"





