



BULLETIN 1173B

PARTS

MODEL 28 TAPE SPLICER

(LTS)

**TELETYPE<sup>®</sup>**  
**CORPORATION**

SUBSIDIARY OF *Western Electric Company* INC.

CHICAGO, ILLINOIS, U. S. A.



BULLETIN 1173B

PARTS

MODEL 28 TAPE SPLICER

(LTS)

**TELETYPE<sup>®</sup>**

**CORPORATION**

SUBSIDIARY OF *Western Electric Company* INC.

CHICAGO, ILLINOIS, U. S. A.

## LIST OF EFFECTIVE PAGES

JULY, 1960

(Supersedes May, 1958 Issue)

Page Number	Change In Effect
A	Change 2
B	Change 1
1	Change 1
2 to 10	Change 2

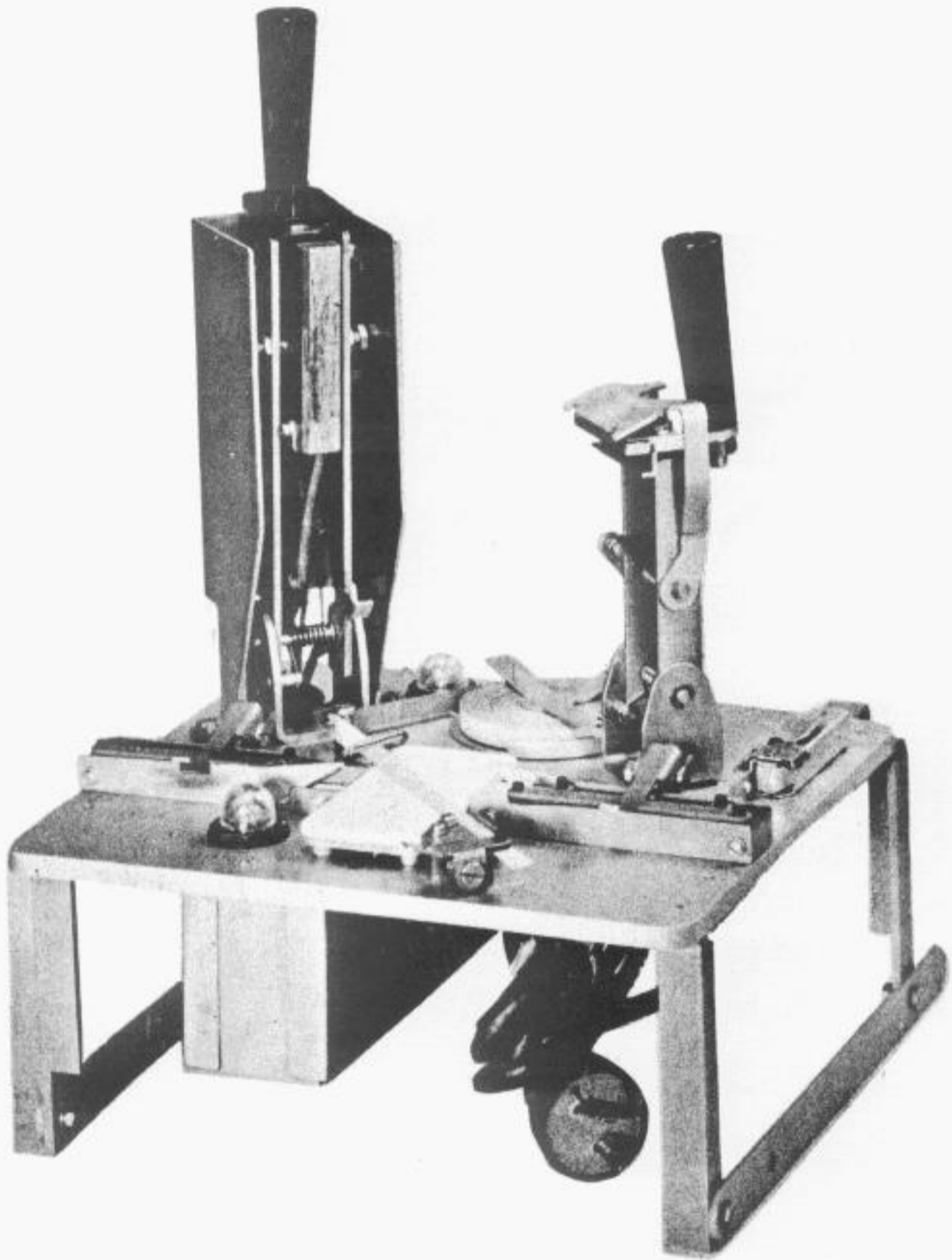
The above list indicates the effective pages as of the date of issue. Upon receipt of Change Pages, insert them numerically and discard any superseded pages.

## TABLE OF CONTENTS

Figure Number	Title	Page Number
1	Tape Guide and Clamps . . . . .	2
2	Cutter Mechanism . . . . .	4
3	Heater Mechanism and Tape Retainer . . . . .	6
4	Delay Relay and Mounting Parts . . . . .	8
-	Numerical Index . . . . .	10

BELL SYSTEM

WHEN ORDERING PARTS FROM THIS BULLETIN,  
PREFIX EACH NUMBER WITH THE LETTERS TP.



MODEL 28 TAPE SPLICER (LTS)  
(Bell System 28A)

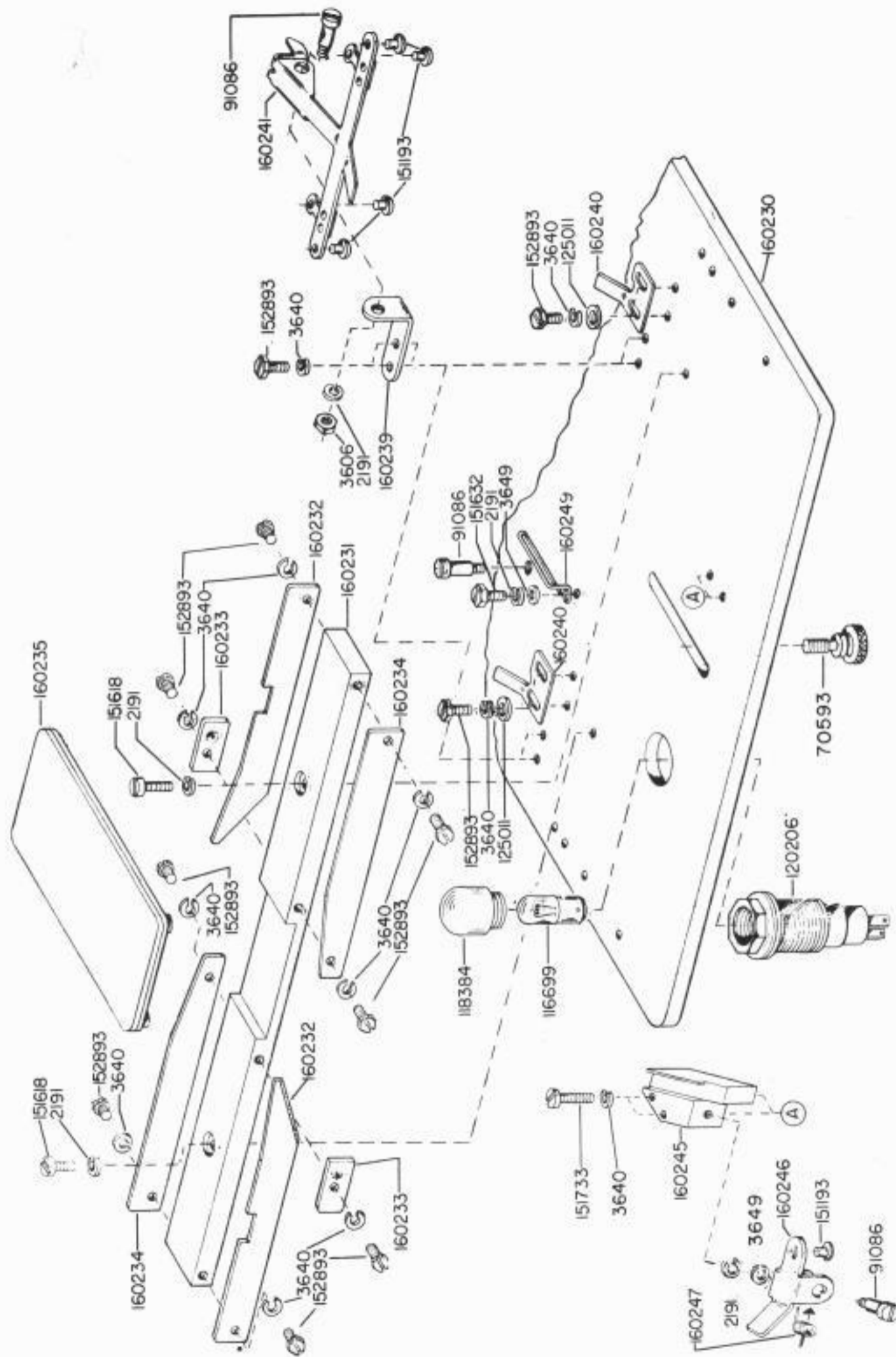


FIGURE I. TAPE GUIDE AND CLAMPS

## NUMERICAL INDEX - FIGURE 1

Part Number	Description
2191	Washer, Lock
3606	Nut (6-40 Hex)
3640	Washer, Lock
3649	Washer, Flat
70593	Screw, Thumb (6-40)
91086	Screw, Shoulder (6-40)
116699	Lamp, Neon
118384	Lens, Indicator
120206	Socket, Lamp
125011	Washer, Flat
151193	Bumper
151618	Screw (6-40 x 7/16 Fil)
151632	Screw (6-40 x 3/8 Hex)
151733	Screw (4-40 x 9/16 Fil)
152893	Screw (4-40 x 1/4 Hex)
160230	Plate, Mounting
160231	Block, Guide
160232	Trimmer, Tape
160233	Clamp
160234	Plate, Guide
160235	Plate w/Studs and Pad
160239	Bracket
160240	Spring, Tape Clamp
160241	Lever w/Springs, Tape Holder
160245	Block, Tape Clamp
160246	Lever, Tape Clamp
160247	Spring
160249	Guide, Tape

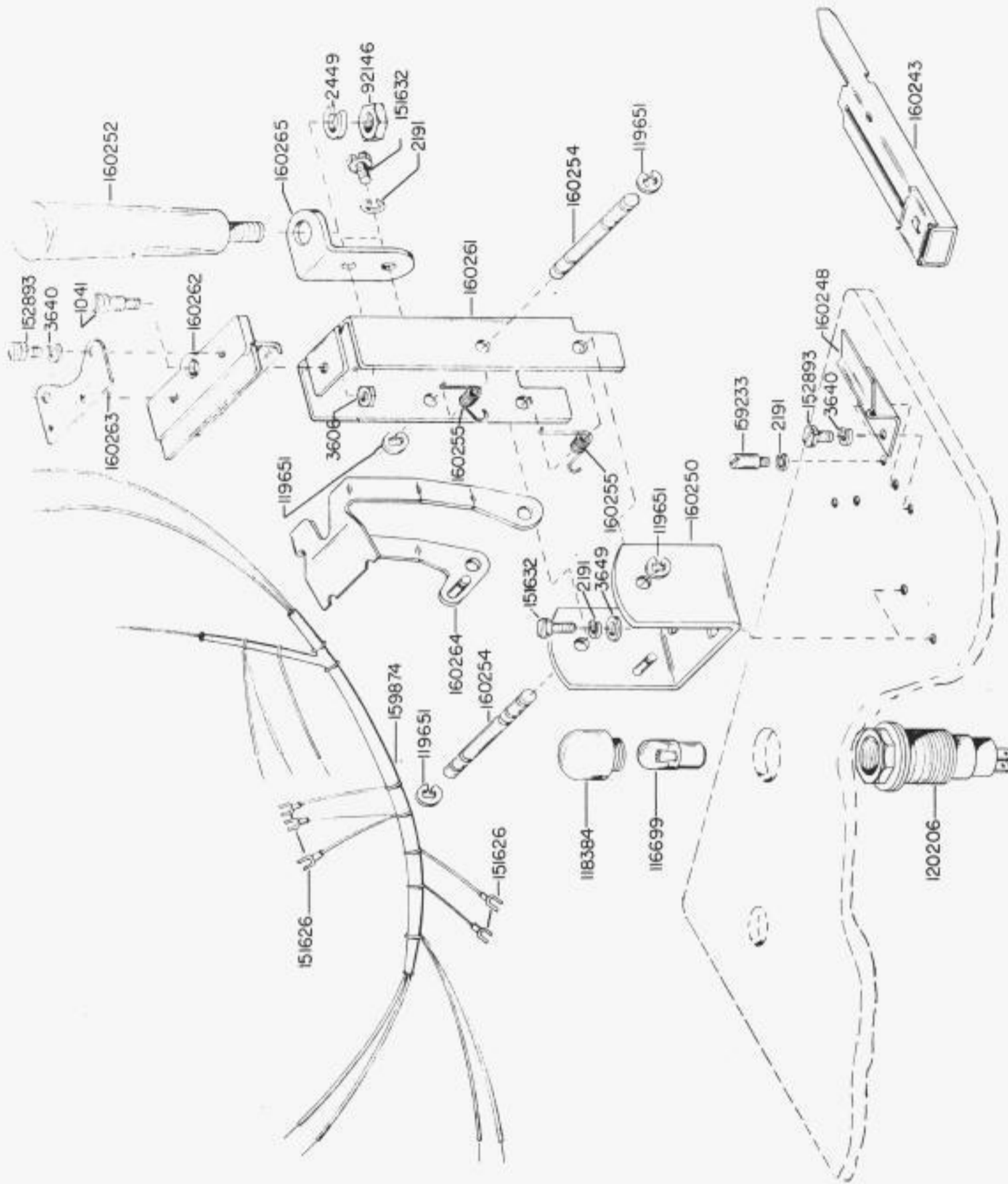


FIGURE 2. CUTTER MECHANISM AND CABLE



## NUMERICAL INDEX - FIGURE 2

Part Number	Description
1041	Screw, Shoulder (6-40)
2191	Washer, Lock
2449	Washer, Lock
3606	Nut (6-40 Hex)
3640	Washer, Lock
3649	Washer, Flat
92146	Nut (1/4-20 Hex)
116699	Lamp, Neon
118384	Lens, Indicator
119651	Ring, Retaining
120206	Socket, Lamp
151625	Terminal
151632	Screw (6-40 x 3/8 Hex)
152893	Screw (4-40 x 1/4 Hex)
159233	Stud
159874	Cable Assembly
160243	Injector w/Blades, Razor Blade
160248	Clip, Spring
160250	Bracket w/Stud
160252	Handle
160254	Shaft
160255	Spring
160261	Bracket, Cutter
160262	Retainer, Cutter
160263	Spring
160264	Guard w/Post, Cutter
160265	Bracket

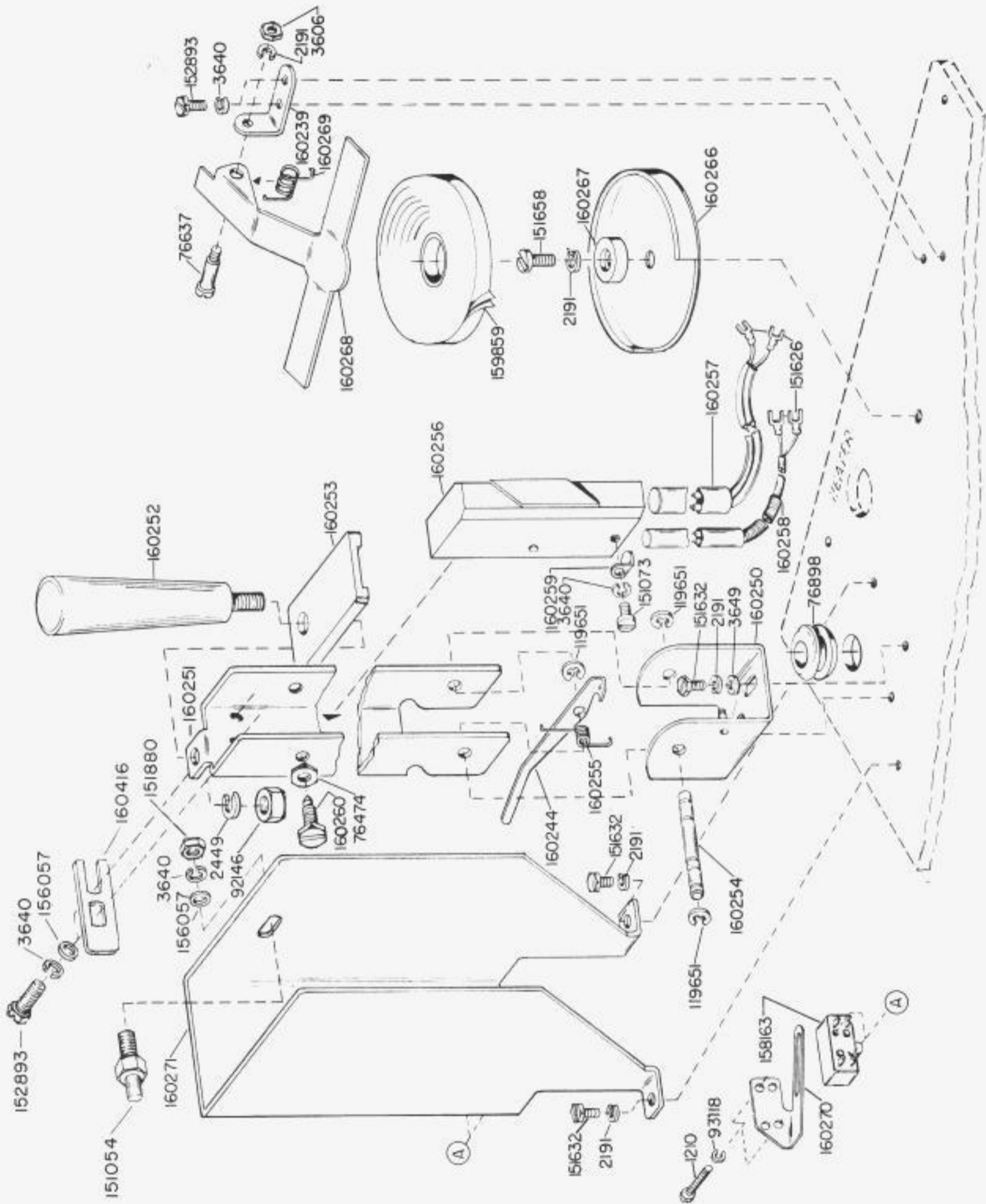


FIGURE 3. HEATER MECHANISM AND TAPE RETAINER

## NUMERICAL INDEX - FIGURE 3

Part Number	Description
1210	Screw (2-56 x 5/8 Fil)
2191	Washer, Lock
2449	Washer, Lock
3606	Nut (6-40 Hex)
3640	Washer, Lock
3649	Washer, Flat
76474	Nut (10-32 Hex)
76637	Screw, Shoulder (6-40)
76898	Grommet
92146	Nut (1/4-20 Hex)
93118	Washer, Lock
119651	Ring, Retaining
151054	Stud (4-40)
151073	Screw (4-40 x 5/32 Fil)
151626	Terminal
151632	Screw (6-40 x 3/8 Hex)
151658	Screw (6-40 x 5/16 Fil)
151880	Nut (4-40 Hex)
152893	Screw (4-40 x 1/4 Hex)
156057	Washer, Flat
158163	Switch, Sensitive
159859	Roll, Heat Sensitive Tape
160239	Bracket
160244	Lever, Switch
160250	Bracket w/Stud
160251	Bracket, Heater
160252	Handle
160253	Plate, Shield
160254	Shaft
160255	Spring
160256	Block, Heater
160257	Heater w/Terminals, Cartridge
160258	Thermoswitch w/Terminals
160259	Bracket
160260	Screw, Pivot
160266	Retainer, Tape
160267	Core, Retaining
160268	Lever, Tape Spool
160269	Spring
160270	Actuator, Switch
160271	Shield, Heater
160416	Plate, Stop

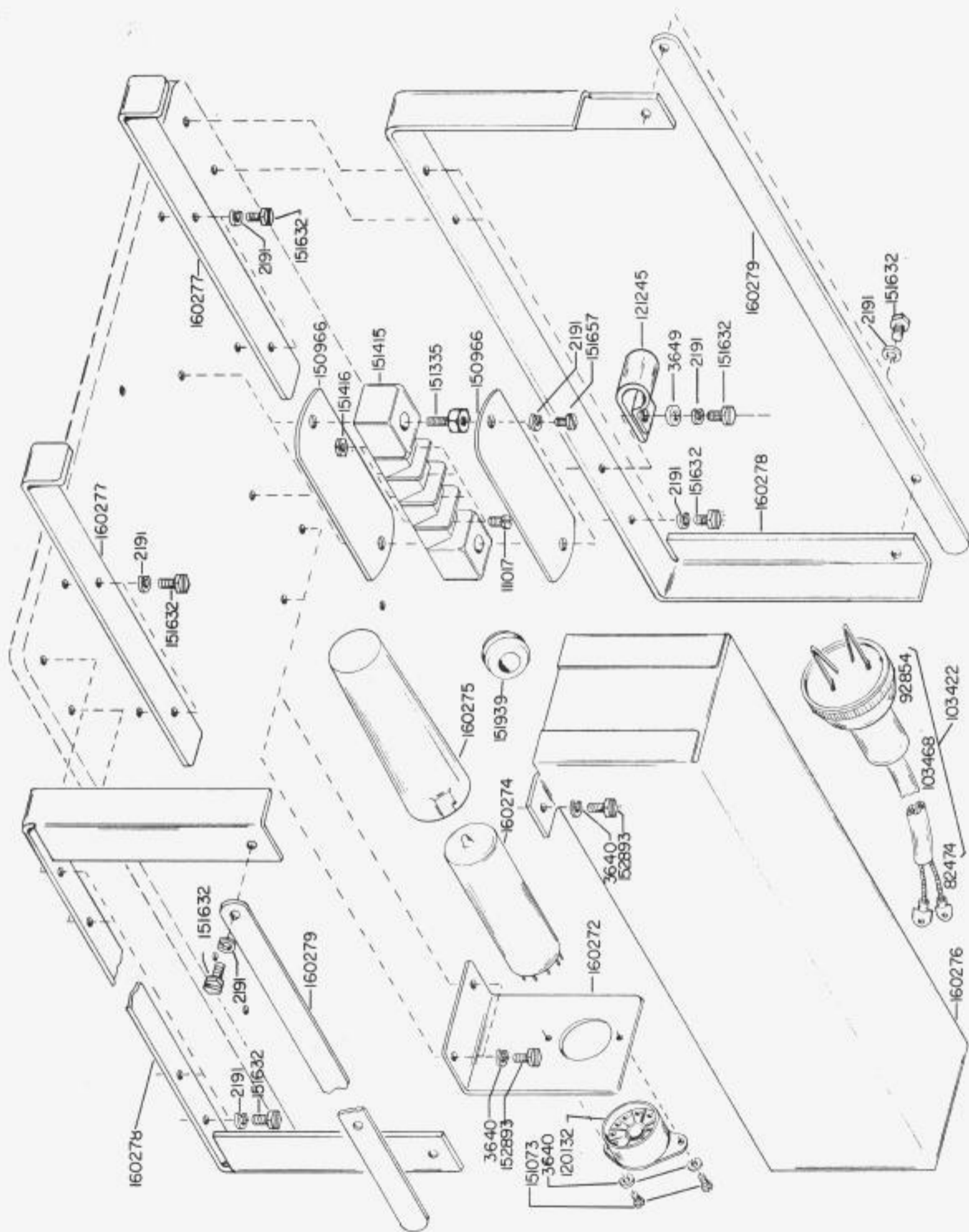


FIGURE 4. DELAY RELAY AND MOUNTING PARTS

## NUMERICAL INDEX - FIGURE 4

Part Number	Description
2191	Washer, Lock
3640	Washer, Lock
3649	Washer, Flat
82474	Terminal
92854	Connector, Plug
103422	Cord Assembly
103468	Cord w/Terminals
111017	Screw (6-40 x 5/16 Fil)
120132	Socket, Tube
121245	Clamp, Cable
150966	Plate, Insulating
151073	Screw (4-40 x 5/32 Fil)
151335	Stud
151415	Block, Terminal
151416	Nut (6-40 Hex)
151632	Screw (6-40 x 3/8 Hex)
151657	Screw (6-40 x 1/4 Fil)
151939	Grommet
152893	Screw (4-40 x 1/4 Hex)
160272	Bracket
160274	Relay, Thermostatic
160276	Cover
160277	Strip, Support
160278	Bracket, Mounting
160279	Strip, Mounting

## NUMERICAL INDEX

Page Number	Description and Page Number	Page Number	Description and Page Number
1041	Screw, Shoulder 4	160230	Plate, Mounting 2
1210	Screw (2-56 x 5/8 Fil) 6	160231	Block, Guide 2
2191	Washer, Lock 2, 4, 6, 8	160232	Trimmer, Tape 2
2449	Washer, Lock 4, 6	160233	Clamp 2
3606	Nut (6-40 Hex) 2, 4, 6	160234	Plate, Guide 2
3640	Washer, Lock 2, 4, 6, 8	160235	Plate 2
3649	Washer, Flat 2, 4, 6, 8	160239	Bracket 2, 6
70593	Screw, Thumb (6-40) 2	160240	Spring 2
76474	Nut (10-32 Hex) 6	160241	Lever 2
76637	Screw, Shoulder (6-40) 6	160243	Injector w/Blades 4
76898	Grommet 6	160244	Lever, Switch 6
82474	Terminal 8	160245	Block 2
91086	Screw, Shoulder (6-40) 2	160246	Lever 2
92146	Nut (1/4-20 Hex) 4, 6	160247	Spring 2
92854	Connector 8	160248	Clip, Spring 4
93118	Washer, Lock 6	160249	Guide, Tape 2
103422	Cord Assembly 8	160250	Bracket 4, 6
103468	Cord w/Terminals 8	160251	Bracket 6
111017	Screw (6-40 x 5/16 Fil) 8	160252	Handle 4, 6
116699	Lamp, Neon 2, 4	160253	Plate 6
118384	Lens 2, 4	160254	Shaft
119651	Ring, Retaining 4, 6	160255	Spring 4, 6
120132	Socket, Tube 8	160256	Block, Heater 6
120206	Socket, Lamp 2, 4	160257	Heater, Cartridge 6
121245	Clamp, Cable 8	160258	Thermoswitch 6
125011	Washer, Flat 2	160259	Bracket 6
150966	Plate, Insulating 8	160260	Screw, Pivot 6
151054	Stud (4-40) 6	160261	Bracket, Cutter 4
151073	Screw (4-40 x 5/32 Fil) 6, 8	160262	Retainer, Cutter 4
151193	Bumper 2	160263	Spring, Flat 4
151335	Stud 8	160264	Guard 4
151415	Block 8	160265	Bracket 4
151416	Nut (6-40 Hex) 8	160266	Retainer, Tap 6
151618	Screw (6-40 x 7/16 Fil) 2	160267	Core 6
151626	Terminal 4, 6	160268	Lever, Tape Spool 6
151632	Screw (6-40 x 3/8 Hex) 2, 4, 6, 8	160269	Spring 6
151657	Screw (6-40 x 1/4 Fil) 8	160270	Actuator, Switch 6
151658	Screw (6-40 x 5/16 Fil) 6	160271	Shield, Heater 6
151733	Screw (4-40 x 9/16 Fil) 2	160272	Bracket 8
151880	Nut (4-40 Hex) 6	160274	Relay 8
151939	Grommet 8	160275	Shield, Tube 8
152893	Screw (4-40 x 1/4 Hex) 2, 4, 6, 8	160276	Cover 8
156057	Washer, Flat 6	160277	Strip, Support 8
158163	Switch 6	160278	Bracket, Mounting 8
159233	Stud 4	160279	Strip, Mounting 8
159859	Roll, Tape 6	160416	Plate 6
159874	Cable Assembly 4		