

ILB TIMER (LCL)

PARTS

FIGURE	CONTENTS	PAGE
1	Timer Base	2
2	Cam Assembly	3
3	147500 Modification Kit to Add Date Insertion Switch to Automation Line Switching System Send Set	4
4	Time of Day Set (5 Level)	5
5	24 Hour Timer Cover and Mounting Plate (8 Level)	6
6	Self Contained Date Set (8 Level)	7
7	Time of Day Set (8 Level)	8
	Numerical Index	9

PAINT FINISH COLOR CODE CHART															
(for parts and assemblies requiring a paint finish)															
Color	Finish Suffixes				Color	Finish Suffixes									
	Wrinkle Finish	Smooth Finish	Textured Vinyl	Smooth Vinyl		Wrinkle Finish	Smooth Finish	Textured Vinyl	Smooth Vinyl						
Beige	AA (37)	ET		HC	Gray, Federal	AB (40)	BV	GG	HB (68)						
Beige, Light		EL			Gray, Green		BK	GA (45)							
Beige, Rose		ER			Gray, Light		EJ	HE							
Black		BA (34)			GC		HG	Gray, Covert		AJ	BJ	GE	HD		
Black, High Gloss								BB						Gray, Olive	EW
Black, Semi Gloss								BB						Gray, Maritime Deck	EP
Blue, Aqua								EK						Gray, Oxford	BK
Blue, Brussels Light		AD (38)			ES		HA	Green, Gray		AB (40)	EN	EM	EU		
Blue, Medium								EC						Green, Moss	EV
Brown, Dark								ES						Ivory	EH
Brown, Light	AC (39)	GF	HA	Pink, Rose											
Fawn				BZ					Turquoise	EG					
Gray, Beige	AL	GB		White											
Gray, Charcoal									Yellow, Pastel						
Gray, Dark															

The double asterisk (**) denotes a painted part. Suffix to be applied following the part number. Number in parentheses indicates Bell System code.

NOTE:

When ordering parts from this section,
prefix each number with the letters TP.

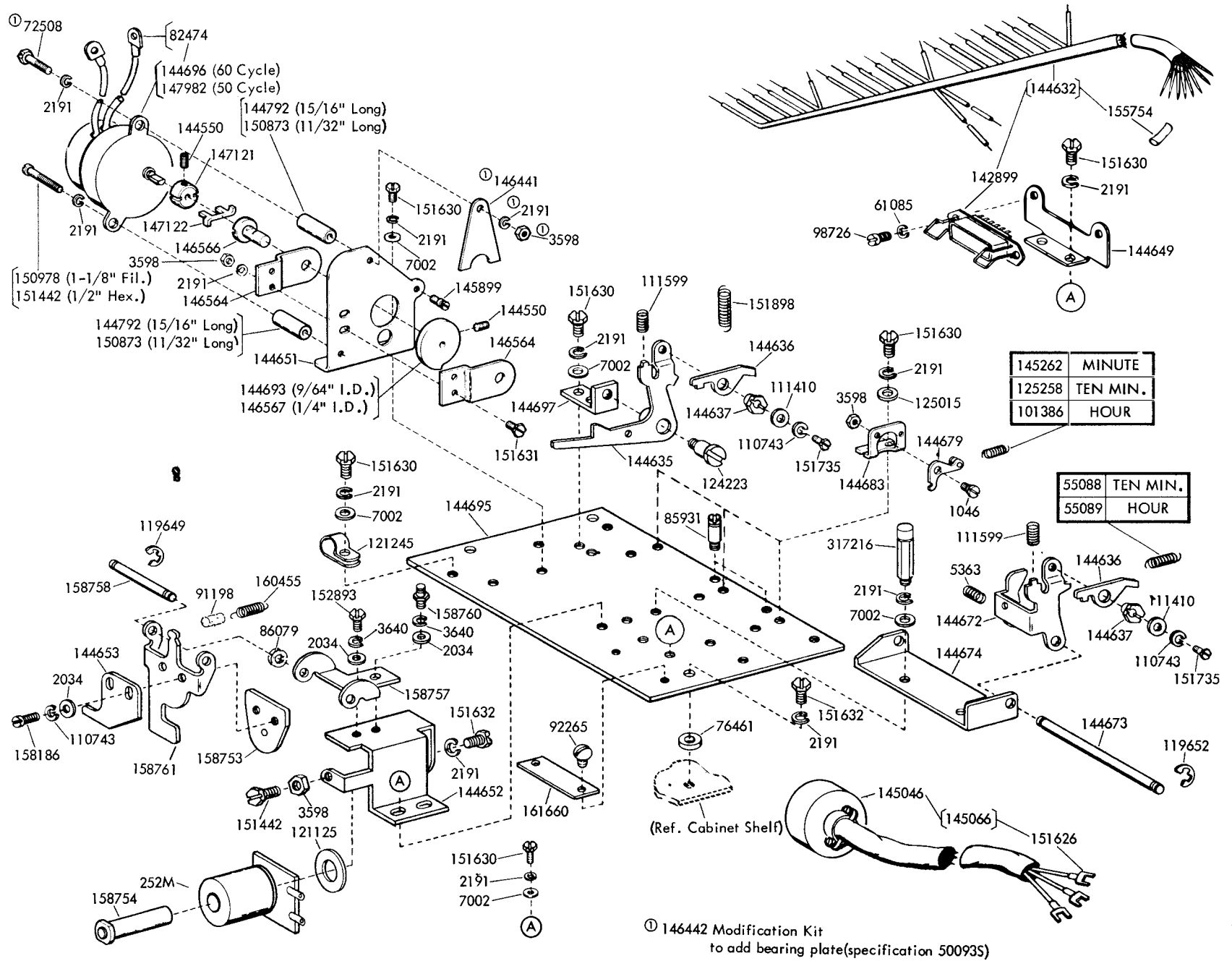
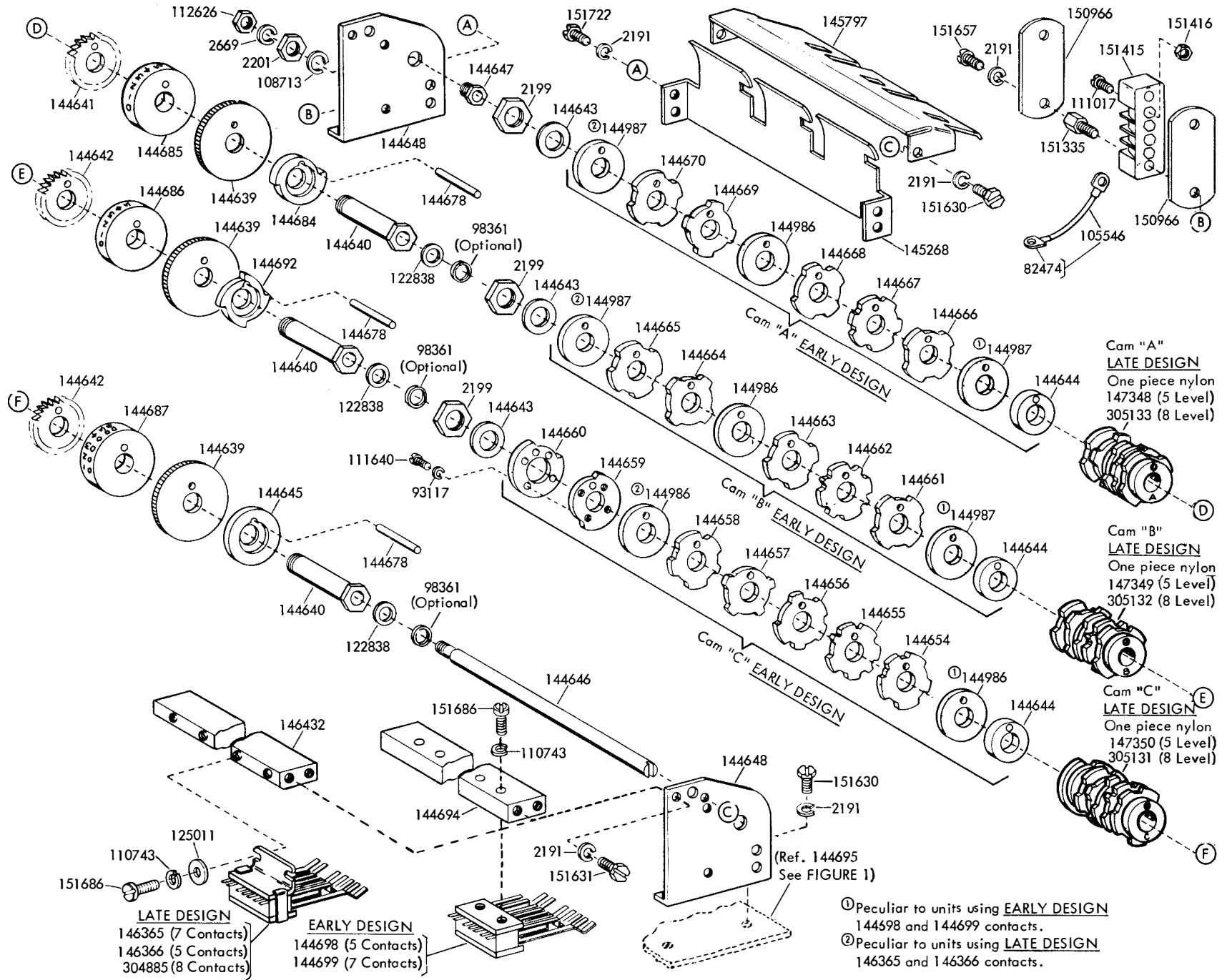


FIGURE 1. TIMER BASE

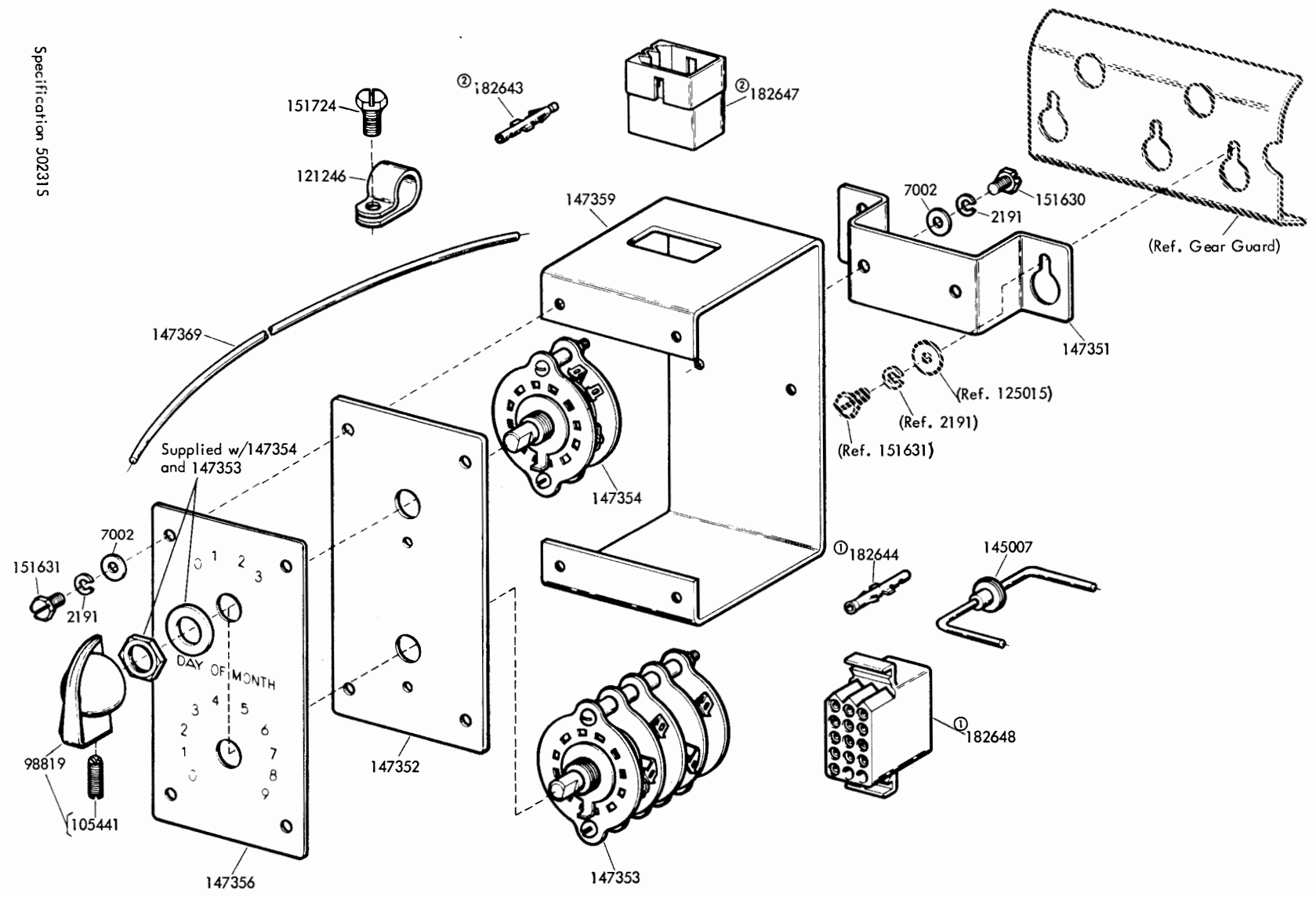
① 146442 Modification Kit
to add bearing plate (specification 50093S)

FIGURE 2. CAM ASSEMBLY
(viewed from the rear)

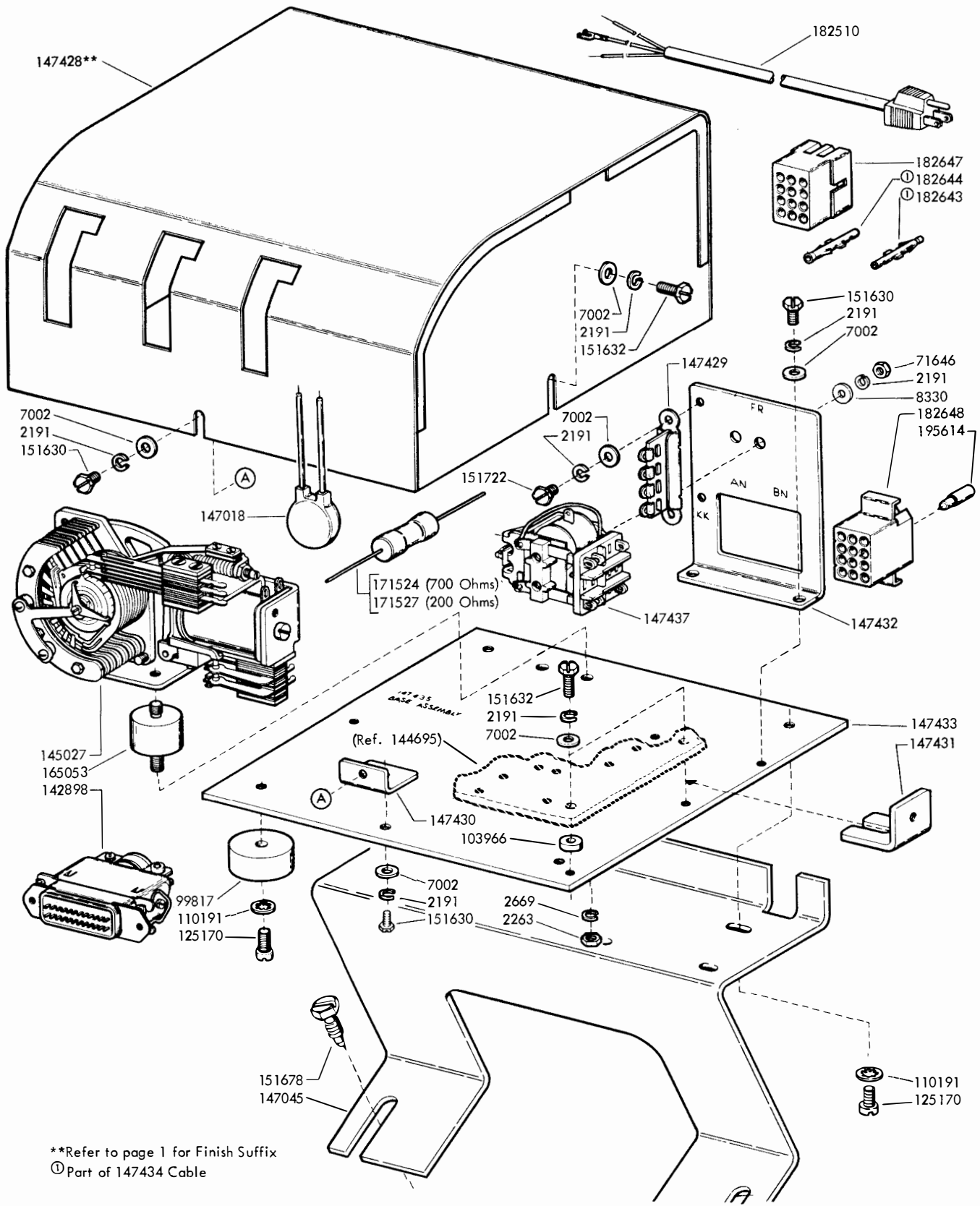


Specification 502315

FIGURE 3. 147500 MODIFICATION KIT TO ADD DATE INSERTION SWITCH TO AUTOMATIC LINE SWITCHING SYSTEM SEND SET

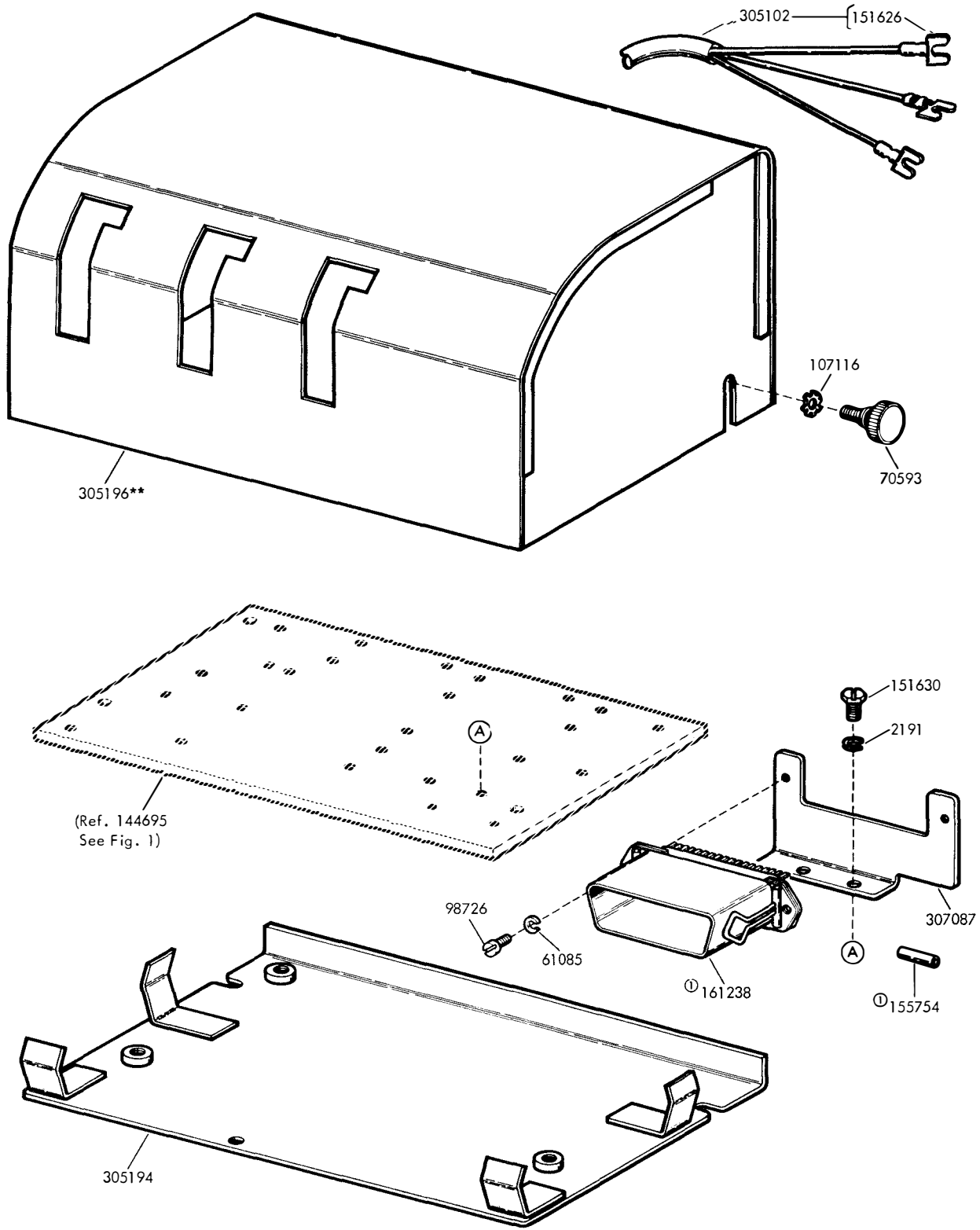


① Part of 147355 Cable Assembly
 ② Part of 147358 Cable Assembly



**Refer to page 1 for Finish Suffix
 ⓐ Part of 147434 Cable

FIGURE 4. TIME OF DAY SET (5 LEVEL)



**Refer to page 1 for Finish Suffix
 ① Part of 306626 Cable Assembly

FIGURE 5. 24 HOUR TIMER COVER AND MOUNTING PLATE (8 LEVEL)

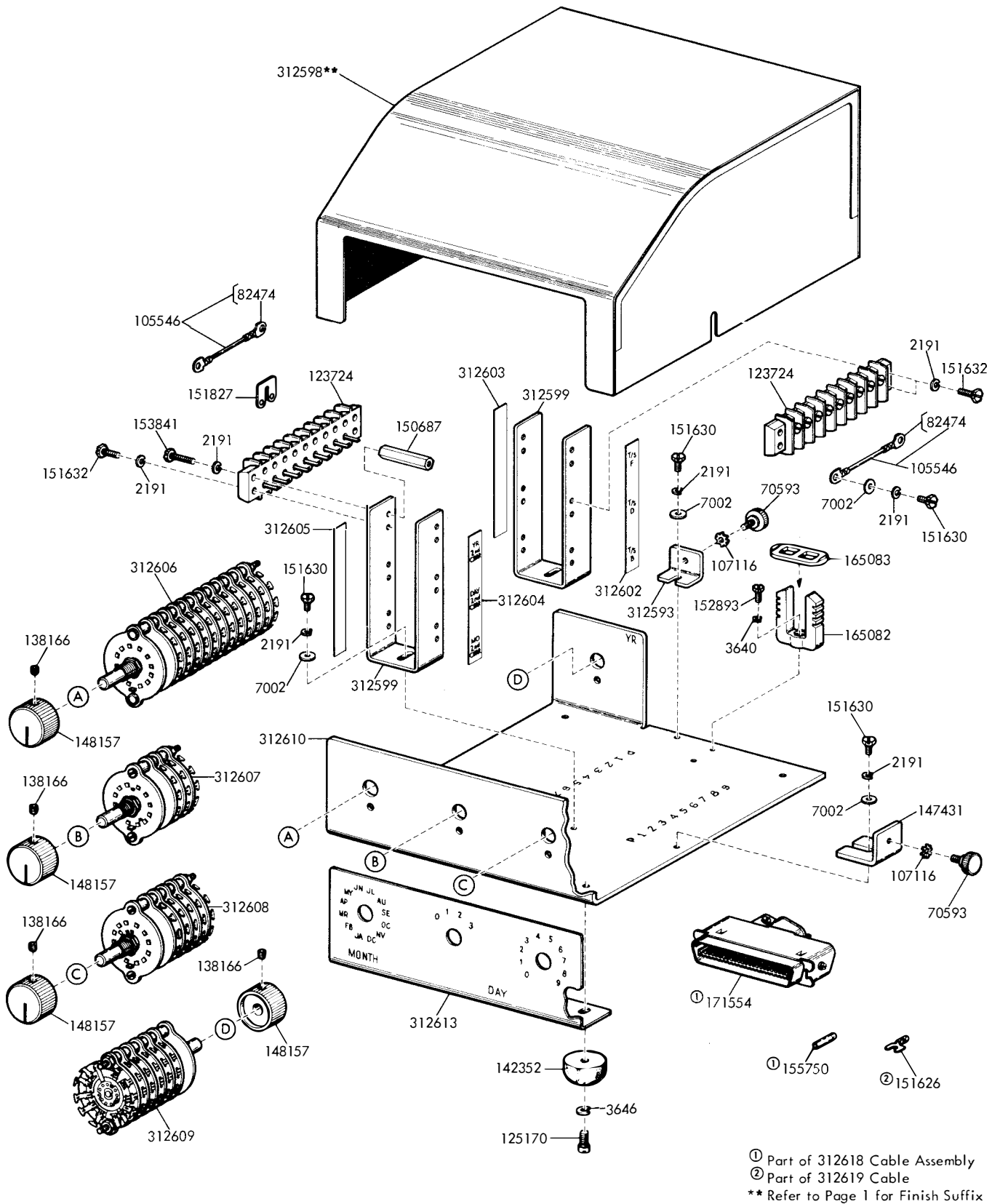
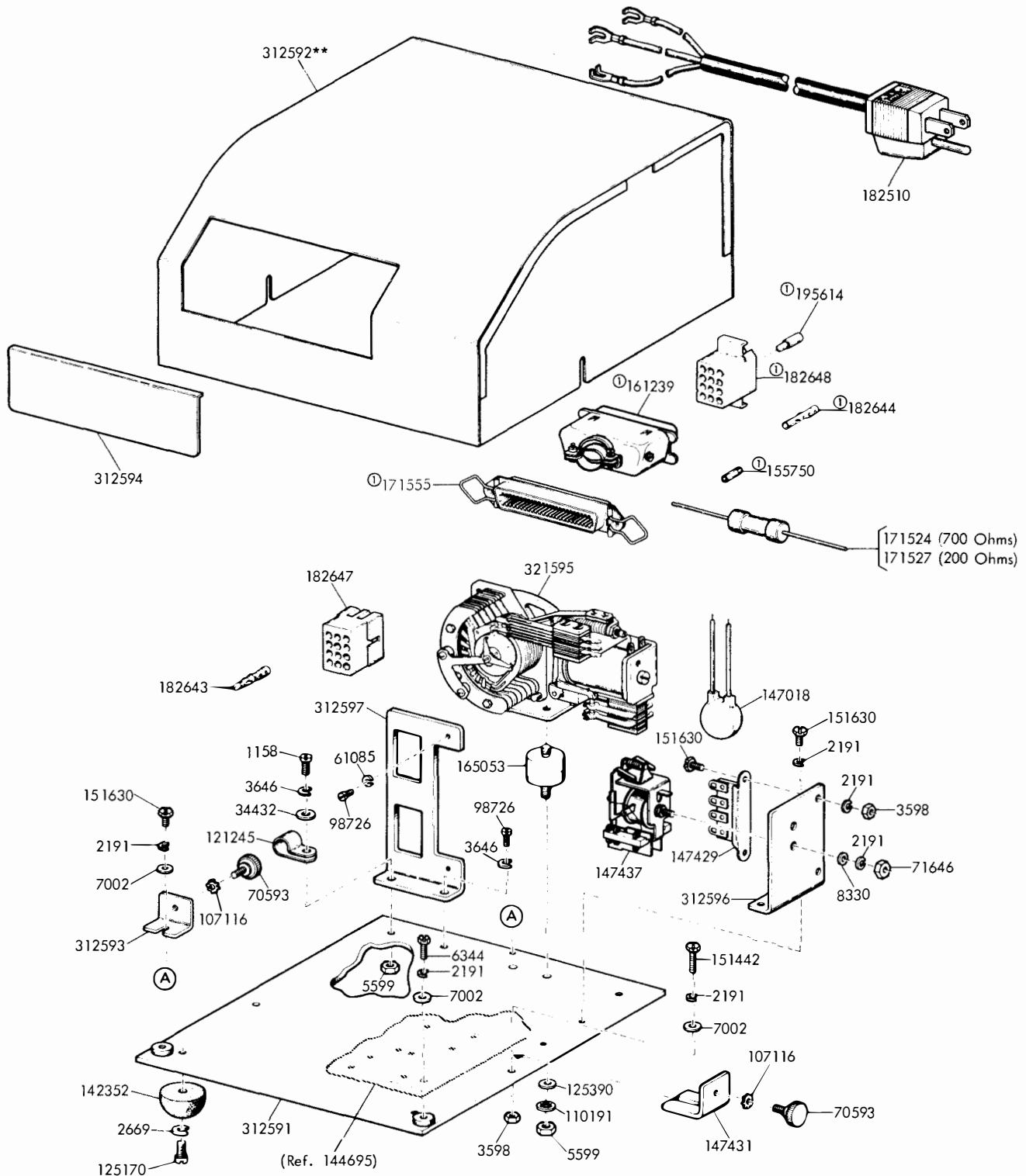


FIGURE 6. SELF CONTAINED DATE SET (8 LEVEL)



**Refer to Page 1 for Finish Suffix
 ① Part of 312615 Cable Assembly

FIGURE 7. TIME OF DAY SET (8 LEVEL)

NUMERICAL INDEX

Part Number	Description and Page Number	Part Number	Description and Page Number	Part Number	Description and Page Number
252M	Coil, Magnet 2	144636	Pawl 2	146564	Bracket, Bearing 2
1046	Screw, 6-40 Shoulder 2	144637	Bushing, Eccentric 2	146566	Shaft 2
1158	Screw, 6-32 x 5/16 Fil 8	144639	Handwheel 3	146567	Cam, Drive 2
2034	Washer, Flat 2	144640	Camsleeve 3	147018	Varistor 5, 8
2191	Washer, Lock 2 to 8	144641	Ratchet, 20T 3	147045*	Bracket, Mounting 5
2199	Nut, 7/16-32 Hex 3	144642	Ratchet, 24T 3	147121	Coupling 2
2201	Nut, 5/16-32 Hex 3	144643	Washer, Flat 3	147122	Link, Drive 2
2263	Nut, 8-32 Hex 5	144644	Spacer, .150" Thk 3	147348	Cam, Unit Minute 3
2669	Washer, Lock 3, 5, 8	144645	Cam, Blank 3	147349	Cam, Ten Minute 3
3598	Nut, 6-40 Hex 2, 8	144646	Shaft, Main 3	147350	Cam, Hour 3
3640	Washer, Lock 2, 7	144647	Bushing, Main Shaft 3	147351	Bracket, Mounting 4
3646	Washer, Lock 7, 8	144648	Plate, Side 3	147352	Plate 4
5363	Spring, Compression 2	144649	Bracket, Connector 2	147353	Switch, 4 Wafer 4
5599	Nut, 8-32 Hex 8	144651	Bracket, Motor 2	147354	Switch, 1 Wafer 4
6344	Screw, 6-32 x 11/32 Hex 8	144652	Bracket, Magnet 2	147355	Cable Assembly 4
7002	Washer, Flat 2, 4, 5, 7, 8	144653	Pawl 2	147356	Plate, Designation 4
8330	Washer, Flat 5, 8	144654	Cam, #1 3	147358	Cable Assembly 4
34432	Washer, Flat 8	144655	Cam, #2 3	147359	Bracket 4
55088	Spring 2	144656	Cam, #3 3	147369	Jumper, 12" White 4
55089	Spring 2	144657	Cam, #4 3	147428**	Cover, Clock 5
61085	Washer, Lock 2, 6, 8	144658	Cam, #5 3	147429	Strip, Terminal 5, 8
70593	Screw, 6-40 Thumb 6, 7, 8	144659	Cam, #6 3	147430	Bracket, Front 5
71646	Nut, 6-32 Hex 5, 8	144660	Cam, #7 3	147431	Bracket, Side 5, 7, 8
72508	Screw, 6-40 x 3/4 Hex 2	144661	Cam, #1 3	147432	Bracket, Connector 5
76461	Washer, Flat 2	144662	Cam, #2 3	147433	Plate, Base 5
82474	Terminal 2, 3, 7	144663	Cam, #3 3	147434	Cable w/Terminals 5
85931	Post, Spring 2	144664	Cam, #4 3	147437	Relay, 118 Ohm 5, 8
86079	Washer, Felt 2	144665	Cam, #5 3	147500	Modification Kit 1, 4
91198	Wick, Felt 2	144666	Cam, #1 3	147982	Motor, 115V AC Synchronous 2
92265	Screw, 2-56 x 1/8 Rd 2	144667	Cam, #2 3	148157	Knob, Gray 7
93117	Washer, Lock 3	144668	Cam, #3 3	150687	Stud 7
98361	Shim, .005" Thk 3	144669	Cam, #4 3	150873	Collar 2
98726	Screw, 3-48 x 1/4 Fil 2, 6, 8	144670	Cam, #5 3	150966	Insulator, Terminal 3
98819	Knob 4	144672	Bail, Driving 2	150978	Screw, 6-40 x 1-1/8 Fil 2
99817	Foot 5	144673	Shaft, Driving Bail 2	151335	Stud 3
101386	Spring 2	144674	Bracket, Driving Bail 2	151415	Block, Terminal 3
103966	Spacer 5	144678	Pin, Locating 3	151416	Nut, 6-40 Hex 3
105441	Screw, 8-32 Set 4	144679	Lever 2	151442	Screw, 6-40 x 1/2 Hex 2, 8
105546	Jumper, 2" Black 3, 7	144683	Bracket, Detent 2	151626	Terminal 2, 6, 7
107116	Washer, Lock 6, 7, 8	144684	Cam, Double 3	151630	Screw, 6-40 x 1/4 Hex 2 to 8
108713	Washer, Lock 3	144685	Drum, Unit Minute 3	151631	Screw, 6-40 x 5/16 Hex 2, 3, 4
110191	Washer, Lock 5, 8	144686	Drum, Ten Minute 3	151632	Screw, 6-40 x 3/8 Hex 2, 5, 7
110743	Washer, Lock 2, 3	144687	Drum, Hour 3	151657	Screw, 6-40 x 1/4 Fil 3
111017	Screw, 6-40 x 5/16 Fil 3	144692	Cam, Quadruple 3	151678	Screw, 1/4-32 Pilot 5
111410	Washer, Flat 2	144693	Cam, Drive 2	151686	Screw, 4-40 x 3/8 Fil 3
111599	Spring, Compression 2	144694	Bar, Tie 3	151722	Screw, 6-40 x 3/16 Hex 3, 5
111640	Screw, 2-56 x 7/32 Fil 3	144695	Plate, Base 2, 3, 5, 6, 8	151724	Screw, 10-32 x 5/8 Hex 4
112626	Nut, 10-32 Hex 3	144696	Motor, 115V AC Synchronous 2	151735	Screw, 4-40 x 5/16 Hex 2
119649	Ring, Retaining 2	144697	Bracket, Driving Lever 2	151827	Strap, Terminal 7
119652	Ring, Retaining 2	144698	Contact Assembly 3	151898	Spring 2
121125	Washer, Spring 2	144699	Contact Assembly 3	152893	Screw, 4-40 x 1/4 Hex 2, 7
121245	Clamp, 5/16 ID Cable 2, 8	144792	Spacer 2	153841	Screw, 6-40 x 9/16 Hex 7
121246	Clamp, 3/8 ID Cable 4	144986	Spacer 3	155750	Sleeve, 3/32 ID x 1/2" Lg
122838	Shim, .010" Thk 3	144987	Spacer, .094" Thk 3		Insulating 7, 8
123724	Board, Terminal 7	145007	Diode 4	155754	Sleeve, 1/16 ID x 1/2" Lg
124223	Screw, 6-40 Shoulder 2	145027	Switch, Stepping 5		Insulating 2, 6
125011	Washer, Flat 3	145046	Connector, 3 Pt Plug 2	158186	Screw, 4-40 x 7/32 Fil 2
125015	Washer, Flat 2, 4	145066	Cable Assembly 2	158753	Armature, Magnet 2
125170	Screw, 8-32 x 5/16 Fil 5, 7, 8	145262	Spring 2	158754	Core, Magnet 2
125258	Spring 2	145268	Indicator 3	158757	Hinge, Mounting 2
125390	Washer, Flat 8	145797	Shield, Pawl Release 3	158758	Shaft 2
138166	Screw, 8-32 Set 7	145899	Post, Spring 2	158760	Post, Spring 2
142352	Foot, Mounting 7, 8	146365	Contact Assembly, Seven Level 3	158761	Bail, Armature 2
142898	Connector, 24 Pt Plug 5	146366	Contact Assembly, Five Level 3	160455	Spring 2
142899	Connector, 24 Pt Receptacle 2	146432	Bar, Tie 3	161238	Connector, 36 Pt Receptacle 6
144550	Screw, 6-40 Set 2	146441	Plate, Bearing 2	161239	Connector, 36 Pt Plug 8
144632	Cable Assembly 2	146442	Modification Kit 2	161660	Plate, Identification 2
144635	Lever 2			165053	Cushion, Red Rubber 5, 8

**Refer to page 1 for Finish Suffix

NUMERICAL INDEX (Continued)

Part Number	Description and Page Number	Part Number	Description and Page Number	Part Number	Description and Page Number
165082	Clamp, Cable 7	305102	Cable w/Terminals 6	312599	Bracket, Mounting 7
165083	Keeper, Clamp 7	305131	Cam, Hour 3	312602	Strip, Identification 7
171524	Resistor, 700 Ohm 5, 8	305132	Cam, Ten Minute 3	312603	Strip, Identification 7
171527	Resistor, 200 Ohm 5, 8	305133	Cam, Unit Minute 3	312604	Strip, Identification 7
171554	Connector, 50 Pt Plug 7	305194	Plate, Mounting 6	312605	Strip, Identification 7
171555	Connector, 50 Pt Receptacle 8	305196**	Cover, Clock 6	312606	Switch, Rotary 7
182510	Cord, Power 5, 8	306626	Cable Assembly 6	312607	Switch, Rotary 7
182643	Terminal, Plug Type 4, 5, 8	307087	Bracket, Connector 6	312608	Switch, Rotary 7
182644	Terminal, Receptacle Type 4, 5, 8	312591	Plate, Base 8	312609	Switch, Rotary 7
182647	Connector, 12 Pt Plug Type 4, 5, 8	312592**	Cover, Clock 8	312610	Plate, Base 7
182648	Connector, 12 Pt Receptacle Type 4, 5, 8	312593	Bracket 7, 8	312613	Faceplate 7
195614	Pin, Key 5, 8	312594	Plate, Front 8	312615	Cable Assembly 8
304885	Contact Assembly, Eight Level 3	312595	Switch, Stepping 8	312618	Cable Assembly 7
		312596	Bracket, Relay Mounting 8	312619	Cable w/Terminals 7
		312597	Bracket, Connector Mounting 8	317216	Stud 2
		312598**	Cover 7		

**Refer to page 1 for Finish Suffix